

# News Of The World Caught By The Camera

## ALLIES MOVE IN ON TREASURY ISLAND



WITH BARGES beached within a few feet of the rocky shore, New Zealanders, part of the invasion force that wrested Treasury Island from the Japanese, bring ashore battle supplies. There was little resistance and the enemy was driven to the hills. The taking of this base imperils the southern approach to Bougainville Island, last important Jap base in the Solomons, on which U. S. Marines have landed. (International)

## COSSACKS TURNING NAZI RETREAT INTO ROUT



SHOWING THE EXTENT to which the Nazi retreat in southern Russia has become a rout, sabre-swinging Cossack horsemen are being used by the Russians in the final stages of the great battle of the Dnieper bend. These expert horsemen, helmeted and armed with sub-machine guns, are cutting down the trapped German units attempting to flee beyond the Dnieper estuary. (International)

### Has Its Points



**LITTLE Mary Yriarte**, 10, a 4-H club member, grooms one of her small pigs in preparation for the Great Western Live Stock Show in Los Angeles. To all appearances, the tiny pig looks as though it wished the grooming were over so it could go back to its sty. (International)

### Breaks Bottleneck



**EXAMINING** one of the metal parts he makes from powder at his plant in Yonkers, N. Y., is Dr. Paul Schwarzkopf. Before he perfected the fast process the metal pieces, which are used by the U. S. Signal Corps, had to be cut, machined and worked over laboriously from cold, rolled steel. (International)

### Wired for Sound



**CORPORAL Melvin Jewell**, of Louisville, Ky., presses a statue into service as an impromptu telephone pole, as he strings telephone wires at the Italian Queen's estate about four miles from the Volturno River. Here was some of the bitterest fighting in Italy. (International)

## HOW OFFICIAL RUSSIAN MAP SHOWS WINTER GOAL



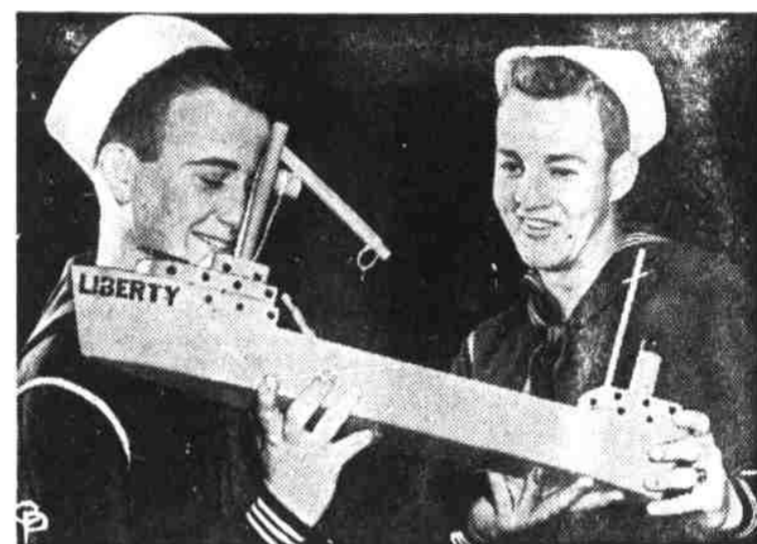
WITH LESS THAN TWO MONTHS to go to Jan. 1, the line separating the white and shaded areas on the map is the front in Poland which Russians expect to reach, and even pass, by the beginning of 1944. The line, which runs from Warsaw to the Czechoslovakian border is part of an official Russian "blueprint for 1943-44 Winter front." The map shows (A) present front, slightly over the half-way point between Stalingrad and Berlin; (B) the Russian border at the time of the German invasion and dotted line along the Bug River indicating the line to which the Germans are expected to withdraw. (International)

## JIMMY RUNS AFOUL OF THE LAW



**TIPED AND DIRTY**, Jimmy Wysocki, 3, relaxes on the steps of a Chicago police station with "Junior," his newly-acquired dog, after the pair had been found wandering through the city's streets. Jimmy has established himself a reputation for collecting stray pooches. (International)

## WHAT ELSE FOR A SAILOR?



AS NATURALLY as the sailor on shore leave goes rowing in a boat, these salt-water men head for the shops in a toy shop. They're Seamen Bob Lawing, Mt. Holly, N. C., and Eddie Hall, Nashville, Tenn., buying a Christmas gift for Lawing's nautically-minded nephew. (International)

### Decorative Miss



JUST TO MAKE SURE the boys in service don't lack for pin-up beauties, we want them to have this photo of shapely Patricia Lowry of Chicago. So far as we know she hasn't won any contests, but we think that's irrelevant. (International)

### Pin-up



ALTHOUGH Carolyn Truax, 19, University of Chicago sophomore, posed as an "atom," the "anatomic theory" is proved. (International)

## HUB OF NEW SPAATZ AIR DRIVE



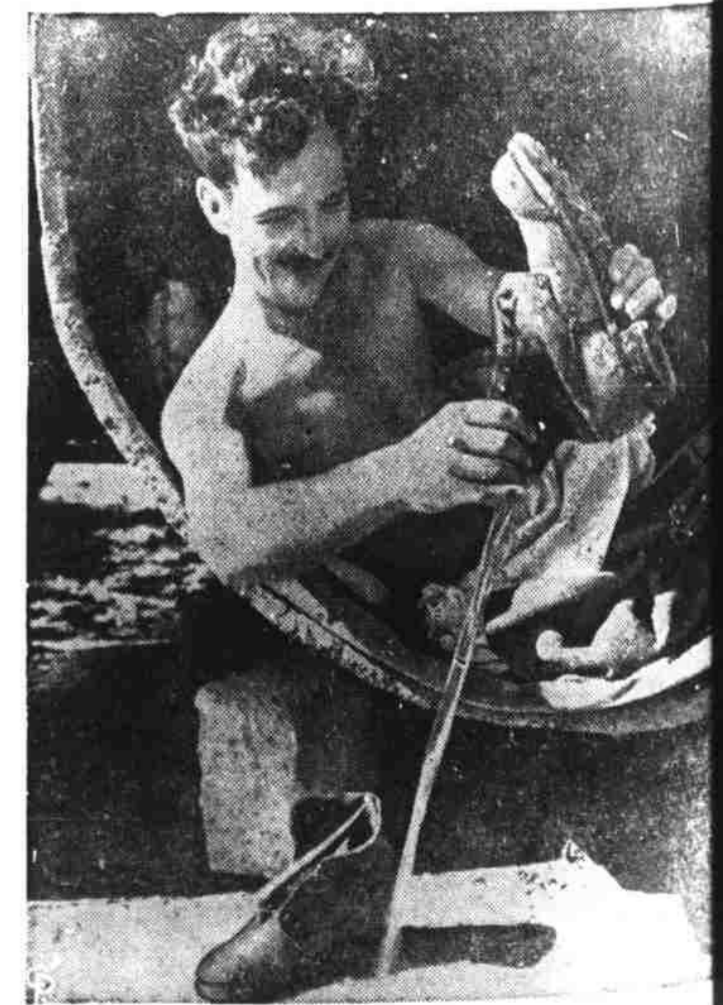
A MAJOR AIR OFFENSIVE against many Nazi targets, heretofore considered invulnerable due to distance, may be expected following execution of a new U. S. Fifteenth Air Force with Lt. Gen. Carl A. Spaatz in command of the Mediterranean area. In combining the Twelfth and Fifteenth Air Forces, bombing drives will cover a wide range of occupied and unoccupied areas as well as south Germany and Austria. Map shows captured and base area in Italy which becomes a new hub of activity and areas indicate the many possible zones of attack. North African bases within range to be used. Inset at left shows Gen. Spaatz. Shaded area indicates territory held by the Allies. (International)

## SOLDIER WINS RACE WITH DEATH



AFTER A HURRIED TRIP from Camp Crowder, Mo., to Albany, N. Y., Frank L. Higgins holds his aged dog "Pal" in his arms as an animal hospitably helps his face. The soldier was called to duty to visit the 17-year-old dog after it was stricken and lay near the grave of its master since he entered the Army. (International)

## IMPROVES ON DIOGENES



THIS BRITISH TOMMY has a barrel of fun—and comfort—in his flat somewhere in the Termoli, Italy area. Seeking shelter from a storm, the Eighth Army warrior found the one-time wine container, water-proof, got a blanket and moved in without signing a lease. Rain provided plenty of running water. (International)

### SCOTT'S SCRAP BOOK



By R. J. SCOTT

ANDREW JACKSON WAS THE FIRST U.S. PRESIDENT WHO DISTINCTLY MADE PUBLIC OFFICE A REWARD FOR PARTY SERVICE.

TO PUSH A THREE-FOOT UMBRELLA FORWARD IN THE FACE OF A 60-MILE AN HOUR GALE REQUIRES A PRESSURE OF 85 POUNDS.

DIRTY FOUL SMELLING RAGS DENOTE CHASTITY AND POVERTY AMONG THE HOLY MEN WHO JOURNEY TO MECCA.

WHO WAS THE FIRST CZAR OF RUSSIA? IVAN IV - CROWNED MARY II - 1647

BUY WAR BONDS AND STAMPS