

## P.T.A. Group To Be Organized At Central School

School Will Stage Annual Halloween Carnival October 26th

A Parent - Teacher Association will be organized at the Central Elementary school Tuesday, October 23, at 7:30, according to Claude Rogers, principal of the school.

The association was discontinued during the war, and in making the announcement, Mr. Rogers pointed out that many patrons of the school, together with the faculty, felt the need of resuming an active organization. Several matters of importance confront the school, and need attention now, it was said.

The nominating committee is composed of Mrs. J. C. Patrick, chairman, Mrs. Merit Brown, and Miss Margaret Burgin.

Plans were discussed at a teacher-parent group Monday afternoon for repeating the annual Halloween Carnival, which has always been staged successfully at the Central Elementary. The event this year will be held on Friday night of October 26th, with many added features. Last year's carnival had a record-breaking attendance, and this year is expected to pass that of 1944.

## Pfc. A. J. R. Moore Expected Home Soon From European Theater

Private First Class Arthur J. R. Moore, son of Mr. and Mrs. Jesse Moore, of Hazelwood, who entered the service on Nov. 2, 1942, is expected to arrive in the States the latter part of this month, according to information received by his family.

Pfc. Moore has been awarded the following: Good Conduct medal, campaign ribbon with six campaign stars, the Bronze Star, Unit Citation and is entitled to wear the European theater ribbon.

Pfc. Moore has been serving in Italy and has been attached to the 8th army.

## COOKED A FINE DINNER; THEN THREW IT TO DOG

One lady recently stated that she used to throw her own dinner to the dog most of the time. It made her sick just to look at anything to eat. She was swollen with gas, full of bloot, had headaches, felt worn out and was badly constipated. Finally she got INNER-AID and says she now eats everything in sight and digests it perfectly. Bowels are regular and normal. She is enjoying life once more and feels like "some other woman" since taking this New Compound.

INNER-AID contains 12 Great Herbs; they cleanse bowels, clear gas from stomach, act on sluggish liver and kidneys. Miserable people soon feel different all over. So don't go on suffering! Get INNER-AID. Sold by All Drug Stores here in Haywood County.

## State and District NCEA Presidents



Mrs. Annie Laurie McDonald, teacher of sociology and health, Lenoir Rhyne College, Hickory, president of the North Carolina Education Association. Isham B. Hudson, superintendent city schools, Andrews, president of the Western District who will preside at meeting of group in Asheville tomorrow.



## Troy J. Early Is Promoted to Staff Sgt. At Overseas Base

Troy J. Early, son of Mr. and Mrs. Fred M. Early of Hazelwood, was recently promoted to the rank of Staff Sergeant, according to information received from the Air Service Command in Italy. A graduate of the army's airplane engine overhaul school which he attended for 15 weeks while stationed in the United States, Sgt. Early is continuing his trade with the same organization to which he received his initial assignment.

Sgt. Early joined the armed forces on February 17, 1942, and departed from the United States for foreign service on November 1, 1942. His tour of overseas duty has carried him to such places as India, Iran, Iraq, Egypt, Libya, Tunisia and Italy. During the past year in Italy he has been on duty with the 17th Depot Repair Squadron, which is stationed at a large general depot of the AAF Service Command near Naples.

For devotion to duty, exemplary behavior, efficiency, and fidelity, Sgt. Early was awarded the AAF Technician's badge and the Good Conduct medal. He is currently awaiting redeployment to the United States and eventual discharge from the service, on the basis of the army's present deployment policies.

## Pfc. Coman Beasley Home After 13 Months In European Theatre

Private First Class Coman Beasley, of this county, spent a several days furlough here during the week. He is now stationed at Camp Lee, Va., and hopes to receive his discharge in the near future.

Pfc. Beasley entered the service in Feb., 1943, and was inducted at Fort Bragg and from there sent to Camp Cooke, Calif., and then to Fort Dix, and overseas where he spent 13 months in the European theater.

He served in England, France, Luxembourg, and Germany and is

## Cpl. Alvin Palmer Awarded Bronze Star Medal for Heroic Service

Corporal Alvin Palmer, son of Mr. and Mrs. C. R. Palmer, of Waynesville, R. F. D. No. 2, has recently been awarded the Bronze Star medal according to information received by his wife, Mrs. Georgina Mae Moody Palmer.

Cpl. Palmer is a member of a B-29 Bomb Group in the Mariana Islands and has been overseas for the past year. He is entitled to wear the South Pacific Theater ribbon, the Good Conduct medal and three bronze stars.

Cpl. Palmer was inducted in the service on May 26, 1943, at Fort Bragg, and received training in the following states prior to being sent overseas: Kentucky, Missouri, Nevada, South Dakota and Nebraska.

At the time he entered the service Cpl. Palmer was employed by the Unagusta Manufacturing Company. He graduated from the Waynesville high school in the class of 1939.

## Pfc. Carl W. Palmer Discharged From Camp Gordon, Ga.

Private First Class Carl W. Palmer, son of John Palmer and the late Mrs. Palmer, of Ratcliff Cove section, was honorably discharged from the army at Camp Gordon, Ga., on October 10, after serving 25 months in the Pacific theater.

He entered the service on March 12, 1942 and was inducted at Fort Bragg and from there sent to Camp Claiborne, La., for his basic training after which he received further training at Fort Bragg and Camp Butler before being sent overseas.

He was attached to the 208th Infantry. At the time he entered the service he was engaged in mining and farming.

entitled to wear the European Theater ribbon with four battle stars, and Good Conduct medal. He was attached to the Third Army.

## Farm Questions and Answers

QUESTION: Do you lose corn by shocking the stalks in the field?

ANSWER: When the kernels are well denting on when the corn is in the late dough stage or beyond, there is very little loss from shocking corn in the field, says Dr. Emerson Collins, in charge of Extension agronomy at State College. There may be some losses from rats and mice, if the corn is left in the field until used. Shocking corn enables many farmers to plant their small grains on time and this is very valuable.

QUESTION: What is the best plan for saving an extra pig per litter?

ANSWER: Jack Kelley, Extension swine specialist at State College, says that the following plan of successful hog growers in Eastern Carolina is practical. Hand feed the sow during the gestation period and keep her in good, medium condition. A good feed mixture is 1 bushel of corn, 1 of oats, and 5 pounds of fish meal or tankage. About one-third pound of fish meal or tankage per day is sufficient. Also give the sow plenty of green feed and a mineral mixture.

QUESTION: How can I control mite infection in my poultry house?

ANSWER: Prof. Roy Dearstyn, head of the Poultry Department at State College, suggests that you paint or spray the roosting racks, or the dropping boards with perches above them, with some good mite preventive. There are a number of good commercial preparations that can be used. Equal parts of kerosene and used motor oil make a good mixture. If wooden nests are used, these should also be treated. It is a good practice to always treat the house before the birds occupy it.

QUESTION: Do we still need to save used fats?

ANSWER: Yes, says Mrs. Estelle T. Smith, chairman of the State Fat Salvage Committee. She points out that the fat situation is still acute and that it will be some time before oils will be received from the areas surrendered by the Japanese. The number of points paid for used household fats was increased from 2 to 4 per pound on October 1. Secretary Clinton P. Anderson says that there is still an urgent need for every bit of used fat that can be salvaged by housewives and others.

QUESTION: How can I estimate my yield per acre of corn?

ANSWER: Here's the method given county agents by Dr. Emerson Collins, Extension agronomist at State College. Harvest shucked corn from 50 feet of running row

## Lions Club Will Discuss Program Of Work Tonight

The local Lions will meet at the Maples tonight at 7:00 o'clock to hear reports from the various activities committees. Each chairman will tell what his committee has done, and also present a proposed budget for his activities for the remainder of the year.

Lion Joe Davis and his committee on Education will present an interesting program regarding the members of the club who are in military service.

Jack Felmet, president, requests the presence of every Lion at this meeting.

## Sgt. J. C. Clement Receives Discharge In Dallas, Texas

Sgt. Charlie J. Clement, son of Mrs. Fannie L. Clement, of Maggie, has been discharged from the army at Dallas, Texas, and has arrived home. He entered the service in May, 1942, and was inducted at Fort Jackson. Prior to being sent overseas he received further training at Keesler Field, San Diego, Biggs Field, Texas, Denver, Colo., and Camp Stoneman, Calif.

Sgt. Clement served two years in the Pacific, where he was attached to the 300th Bombardment group of the 5th Air Force. He is entitled to wear the Pacific Theater ribbon, with four battle stars, Good Conduct medal and Philippine Liberation ribbon. At the time he entered the service he was employed by the Dayton Rubber company.

and weigh. Get the average for about five or six locations in the field. Then, if your rows are 2 1/2 feet wide, multiply the number of pounds from the 50 feet of running row by 3.16. This will give you bushels of marketable corn per acre, running 15 1/2 per cent moisture. It is taken for granted that your present corn contains about 25 per cent moisture. If your rows are 4 feet wide, just multiply by 2.76 rather than 3.16. For factors on other widths of rows and for information as to how the factors were arrived at, consult your county agent. It's just a good problem in arithmetic.

QUESTION: Do I still have time to seed a supplemental grazing crop?

ANSWER: Agronomists at State College suggest that you seed your mixture of small grains, legumes, and rye grass as early as possible. Although you will not get much grazing this fall, unless weather conditions are particularly favorable, you will be assured of early spring grazing before permanent pastures are ready and when feed conditions are tight.

## They Are Here At RAY'S Again

—Lovely Pre-war Qualities in Towels—

## Not Just Towels!!!

## CANNON TOWELS

—And in a Lovely Assortment—



The Values are Amazingly Good, Too.

Wash Rags ..... 9c and 10c

Cannon Towels ..... 27c to 59c

Nice soft absorbent bath towels in shades of blue, peach, green and bordered whites.

They Are Here Again At

**RAY'S**  
Department Store

## Building Restrictions Are Lifted...

If You Are  
Going To Build A Home—See Us For  
Your Money

Hundreds of families are enjoying their own home today, instead of paying rent, just because they bought or built with money borrowed from this bank.

Pay yourself rent... there is every satisfaction in owning your home.

**THE**  
**First National Bank**

ORGANIZED 1902

Member Federal Deposit Insurance Corporation

Member Federal Reserve System

## Maj. George Plott Home For Six Weeks Leave

Major George Plott, veteran of World War I, who has been in service since Sept. 16, 1940, when he left here with the National Guard, is spending a six weeks leave at home, after which he expects to be discharged from the service.

Major Plott came home from Seymour Johnson Field, Goldsboro. When he entered the service in September, 1940, he was first stationed at Fort Jackson, and after his transfer to the Air Corps served at the following posts: Washington, Patterson Field, Springfield, Ill., and from the latter to Dyersburg, Tenn., where he has spent the past three years.

## Maggie School Raises Money For New Piano

The Maggie School staged a successful musical program on the 11th, as a benefit to raise money to pay for the school piano.

Featured on the program was "Red" Raper and his group of musicians.

Sales of pies and cakes, donated by patrons, also was a feature of the program, with the proceeds going to the lunch room.

## Now On Sale

CARL GOERCH  
NEWEST BOOK

"Characters... Always Characters"

This is a book you'll enjoy reading time and again.  
See It In the Book Department of

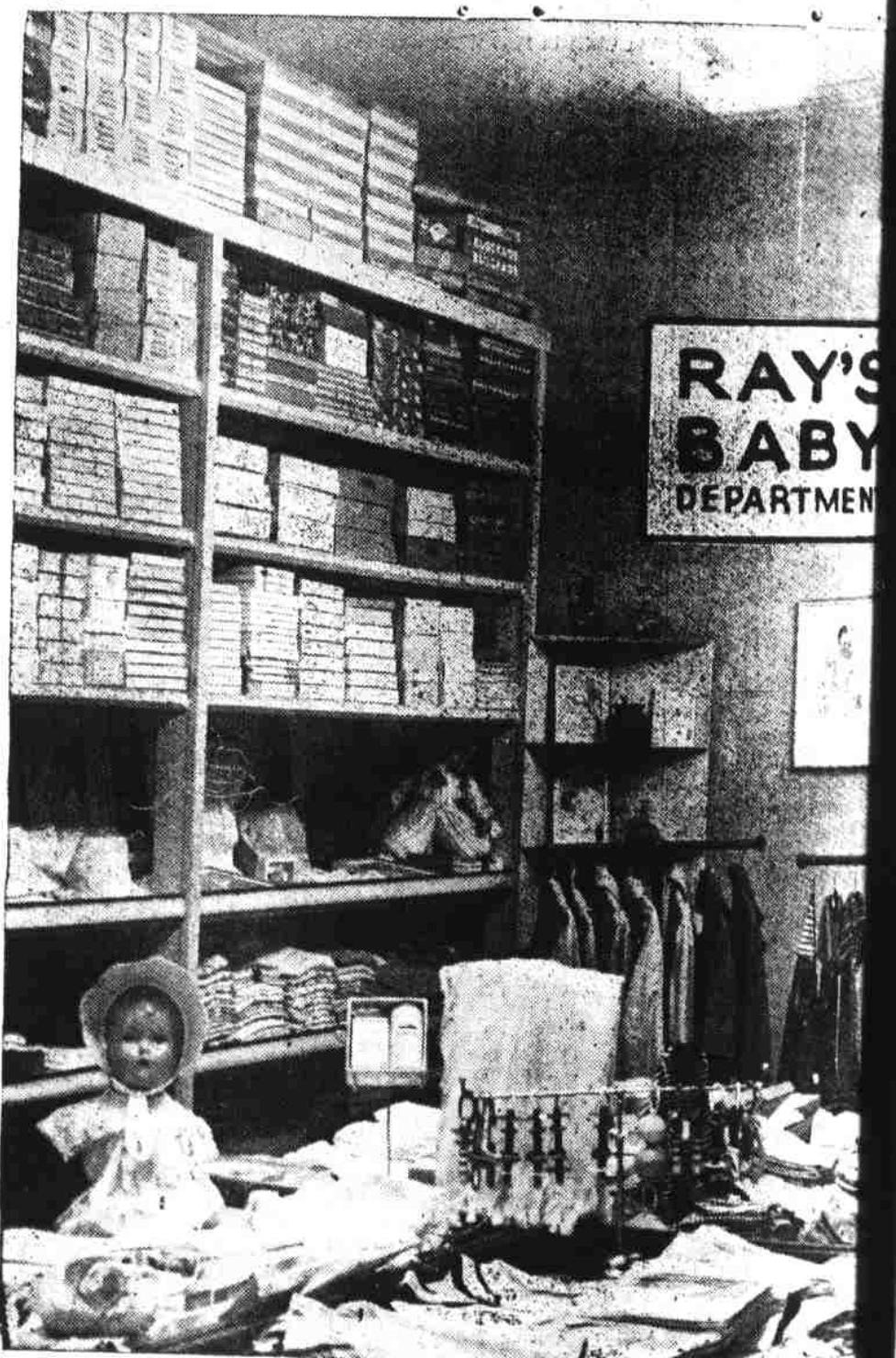
**THE MOUNTAINEER**

## Newly Decorated - Ready To Go

## Ray's Green Room

The Home of Infant's and Toddler's Wear

And Chock Full Of Merchandise



As seeing is believing — we present here a view of one corner — the Green Room.

But ever so much better than the photograph would be a visit to — Green Room on your part —

Just off the main floor—Just thru a door near our Shoe Department — you will step into a child's wonderland —

If there are small children in your home — YOU NEED TO BE — CUSTOMER OF THE GREEN ROOM —

UNDERWEAR — Clothing — SWEATERS — TOYS — GIFTS — And the Hundreds of small things you need —

NOW SHOWING DOLLS IN THIS DEPARTMENT

**Ray's Green Room**

—The Home of Infant's and Toddler's Wear—