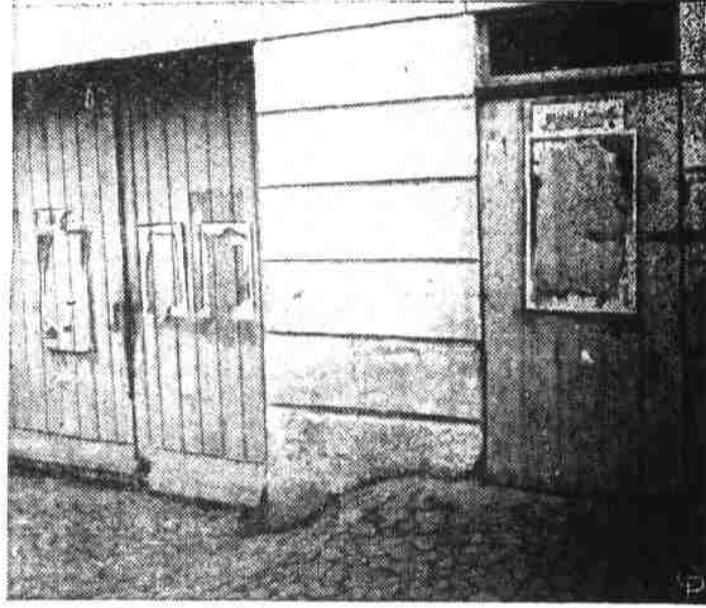


**GERMAN ELECTION IN RED ZONE**



THE ONLY PARTY in Geibitz, a town of 306 voters in the Russian-controlled zone of Germany, was the Socialist Unity Party (S.E.D.) backed by the Russian regime. Voters (top) go to the only place set up for them to cast their ballots. Only visible sign of opposition were posters torn down (bottom) by opponents of the S.E.D. The leftist party in the Red zone won the election, but by surprisingly small margin. (International)

**Rod and Gun**

(Continued From Page 7)

previous year. Federal aid is being used on six wildlife investigation projects in the state.

The Federal grant, like the only other source of revenue for the Division of Game and Inland Fisheries, license fees, is sportsman's money. Money apportioned under the Pittman-Robertson Act is derived from the Federal tax on sporting arms and ammunition, and goes to states on the basis of land area and numbers of hunting license holders. The states are required to put up 25 per cent of the cost of projects operated under the act.

**Telephone**

(Continued from page 1)

1941 to a return of 2.70 per cent for the period April through July of this year.

"We have every reason to believe that in the face of rising costs earnings will continue to drop unless we get some relief in the form of better rates. The rate revision we are now requesting is very nominal in view of the heavy expenses we have sustained for a long period and the extensive building program now being undertaken in the state.

"We look forward to an expanding telephone service that will reach more people, create more jobs, and promote the state's development. Reasonable earnings are, of course, essential to the attainment of these objectives."

**Leatherwood**

(Continued From Page One)

equal basis with school districts in providing adequate school buildings and equipment.

Mrs. Grady Farmer is president of the Hazelwood association, and W. Curtis Russ is president of the Central Elementary association. Each president presided at their

**Market Reports**

(Continued from page 1)

Intosh 3.00-3.50.

**Vegetables**

Potatoes are about the only local produce now being bought at the Farmers Exchange, which quotes 2.00 per bu. At Hendersonville: Snap beans, market stronger, receipts fairly heavy. Bu. Tender-greens and Black Valentines 2.00 to 2.75. (No report from Atlanta). New York: Cabbage, market dull, 50 lb. sacks 75 to 1.00. Sweet potatoes, market dull, N. C. bu. baskets No. 1 Porto Ricas 3.00 to 3.25; La. bu. baskets 3.50. Beans, N. Y. Black Valentines, quality fair to good, 200-3.00; Bountifuls 1.75-2.50.

**FSA Personnel**

(Continued from page 1)

crans, and that the interest rate is increased from three per cent to 3 1/2 per cent.

During the periods of discussion the committeemen generally expressed the opinion that the loans to purchase farms must be followed by more hopeful advice and suggestions to enable the borrower to use the best methods of farming.

**TURN-ABOUT PARTY**

PHILADELPHIA, Pa. — For 25 years, Miss Anna Voegelin made it a practice to give a party each year for the neighborhood children, as "thank you" presents for not picking her roses. Two years ago, the parties were abandoned because of the war and "Miss Anna's" loss of her sight. However, this year, the neighborhood youngsters all contributed to a party fund. Then they called on her at her home with two gifts—a purse of \$15 and a corsage of red roses.

respective meetings held the first of this week.

**NEW LOW PRICES AT BELK-HUDSON'S**



**HARVEST OF VALUES**

Beautiful  
**DISHES**  
Half Price

Girls' School  
**OXFORDS \$3.95**

Dish  
**TOWELS - - 4c**

Fast Color  
**PRINTS - - 39c**

Stub  
**Broadcloth - 59c**  
Two Yards - - \$1.00

Only 12 Left—Metal  
**CHESTS - - \$2**

36-Inch Fast Color  
**GINGHAM 69c**  
All Colors

PLANTATION  
**STATIONERY**  
Half Price

Tea  
**GLASSES 5c - 10c**

32-Piece Set  
**DISHES**  
Hand Painted  
Special  
**\$6**

Regular \$5.88  
Electric  
**TOASTER**  
**\$3**

We Cash Your Checks  
**FREE**  
No Exchange Charges



Ladies' White  
**SLIPS**  
\$1.50

Ladies'  
**PANTIES**  
Elastic Waist  
48c

Ladies' All Wool  
**SWEATERS**  
\$3.95  
All Colors

Ladies'  
**Skirts \$2.90**

Children's Print  
**Dresses \$1.85**

Children's  
**SWEATERS**  
\$1.50  
Were \$1.94

Children's  
**Pullover 97c**  
Were \$1.59

**FREE**

A Gift Book to Every Baby  
Visiting Our Baby Department.

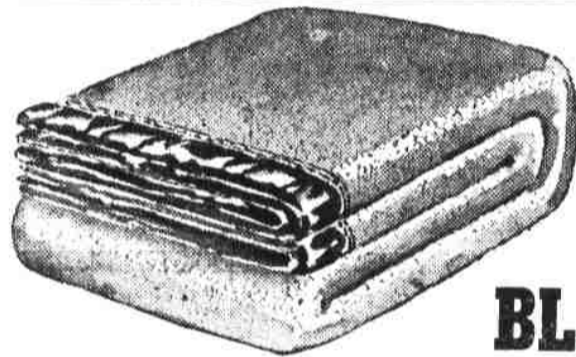
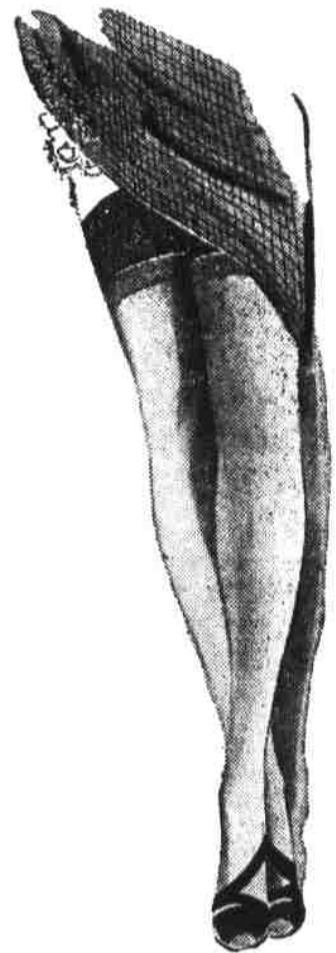
Yes --- It's The  
Truth

**Nylon**  
**HOSE**

—No Registering  
—On Sale

With and Without  
Seams

Remember we have  
the largest Hosiery de-  
partment in Haywood



Values  
In

**BLANKETS**

Double  
**Blankets \$1.98**  
Double Bed Size

5% Wool  
**Blankets \$3.95**  
With Satin Binding

Beautiful Print House  
**Dresses - \$3**  
These Are A Bargain  
—Second Floor—

White Sheet  
**Blankets \$1.39**

Many Other Values In  
**Blankets**

One Lot Ladies' Winter  
**Coats \$15.40**



**Special**  
Boys'  
**Shirts - 97c**  
Were \$1.29

Boys'  
**Sweaters**  
\$1.64

Boys' 100% Wool  
**Mackinaws**  
\$8.95

Leather  
**JACKETS - \$8.90**  
Were \$10.95

Boys'  
**PAJAMAS - \$1.98**  
All Colors

Boys' Corduroy  
**OVERALLS \$2.95**  
All Colors

Children's Print and Solid  
**PAJAMAS - 97c**

Boys'  
**PANTS - - \$1.98**

Boys' All Wool  
**Overcoats \$12.50**  
Were \$15.95

36-Inch  
**CURTAIN SC**  
15c yd.

Flashlight  
**BATTERIES**

**SPECIAL**  
Flashlights

Overall  
**JACKETS**



Men's Dress  
**SHIRT**  
\$1.98 -- \$2

Men's Heavy Sanforized  
**PANTS - \$**

Blue Sanforized Chambray  
**SHIRTS - -**

Work Cotton  
**GLOVES -**

Men's Flannel  
**SHIRTS -**

Genuine Navy  
**RAINCOAT**

All Colors Of  
**Sweat Shirts**



**Belk-Hudson Co.**

"The Home of Better Values"

MAIN STREET

WAYNESVILLE

**Just Arrived**

**Franklin Radio Service**

Hazelwood, N. C.

- New Table Model Radios
- Automatic Electric Irons
- Batteries and Tubes of All Types.

Guaranteed Radio Repair Service  
By Bonded Electronic Technicians

Pick-Up and Deliver

Phone 428-W