



A sitting room corner is effectively decorated with a hand printed documentary fabric by Greel Fabrics, Inc. "Endham", a 50" chintz with reversed design having an "up or down" tie been chosen for the chair and window treatment. The drape can be drawn open or closed.

Colors Make Quiet Rooms

Knowledge of the effect of various colors on the emotions is becoming increasingly important to the homemaker who wants to decorate her home most comfortably. For example she should know the role played by color in making a bedroom restful and sleep inducing. Of course, the most important factor in restful sleep is good sleep equipment which will give the proper kind of support and allow the sleeper to toss and turn at will, resting every part of the body.

Colors which should not be used in large amounts in a bedroom are red, maroon, orange, purple, brown, taupe, plum, wine, black and white. Tones of these colors, however, may be effective as accent notes. The reason for the do's and don'ts about these colors can be understood by comparing their characteristics. Take, for example, red, a don't for bedrooms, and its distant cousin pink. Red is characteristically warm, rich and stimulating. In a bedroom it would be disturbing rather than soothing. Pink on the other hand, is lax, youthful and dainty, ideal in creating a happy, peaceful feeling.

SLEEP TONIGHT! Do something when sleepless nights... NORMALIN TABLETS can help bring calm, refreshing rest when nervous tension threatens normal sleep. NORMALIN TABLETS are non-habit forming, safe to use. Take as directed. Medically approved ingredients. Guaranteed satisfaction or money refunded. NO PRESCRIPTION NEEDED. Clip this message to insure getting genuine NORMALIN TABLETS on sale today at SMITH'S DRUG STORE.

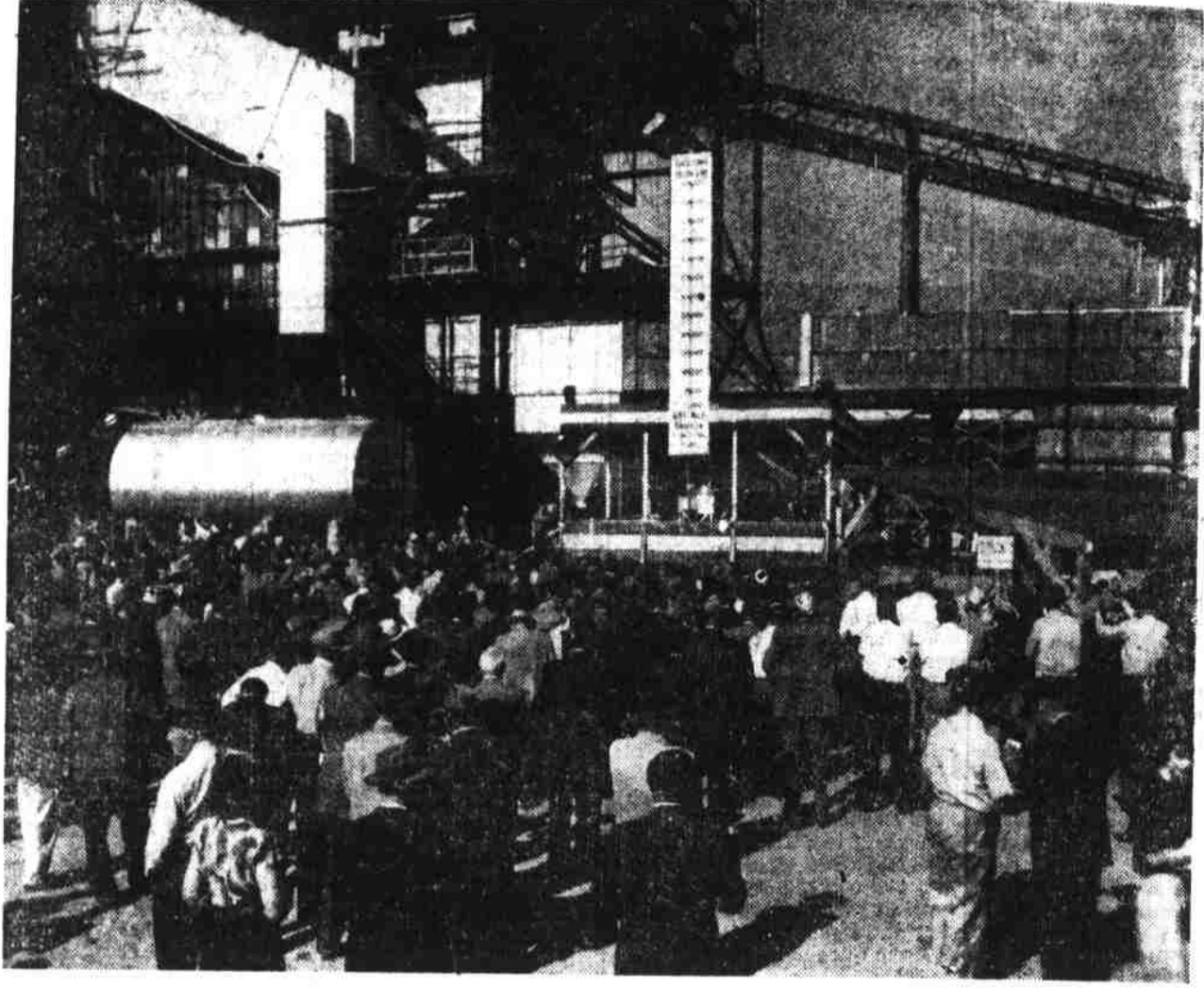
RHODE ISLAND UNIQUE PROVIDENCE, R.I. (U.P.)—Rhode Island is the only state in the nation that celebrates Victory Day as a legal holiday to commemorate the ending of World War II on Aug. 14.

PAPA DOING O.K. EVERETT, Mass. (U.P.)—Francis M. Morrissey delivered his wife of a 7-pound, 6-ounce girl in the bedroom of his home, then fainted. Doctors said the father and baby were "doing fine."

Stolen Dollar Bill Easily Trailed DE PERE, Wis. (U.P.)—Police followed the week-end trail of a stolen dollar bill and it led them to the culprit.

The investigators knew that the bill had been stolen on a Saturday evening from a bowling alley. They finally caught up with it at a bank, and began backtracking. They found that a gas station owner had deposited it, after receiving it from a tavern operator.

The tavern operator got it from a customer who had received it as change at the De Pere theatre. The theater cashier said a 14-year-old boy had presented it at 7 p.m. Saturday. Confronted with the bill, the Astounding bill had been various owner's friction tape.



Part of the crowd which gathered for the formal opening of the Carolina Power and Light Company's steam-electric generating plant in Lumberton on September 29.

"NO POWER SHORTAGE"

"It is a matter of pride to us that since our Company was first organized in 1908, there was never a time when we did not have all the power required for all the needs of the territory we serve. There has never been a power shortage in our area. During the war our Company not only supplied all of the requirements of the war production program, including the many military camps and needs of all the customers in the territory it served, but in addition furnished several hundred millions of kilowatt hours of power for aluminum production, furnaces, shipyards, camps and other needs outside of its own territory."

The full text of the address by L. V. Sutton at the new Lumberton Plant ceremony follows:

I bring you greetings from the more than 1800 officers, directors and employees of Carolina Power & Light Company, also from the thirty-odd thousand stockholders and bondholders who, because of their faith in the Company and the area which it serves, have provided the money with which this plant and other facilities of the Company are being constructed. This Lumberton Plant is an important part of a \$78,000,000 postwar expansion program now in progress by our Company. Near the conclusion of this program, when Governor Scott puts into operation the first unit of this new plant, he will release the useful energy of 60,000 horsepower. During the spring of next year, another 60,000 horsepower unit which you see here under construction will be placed in service. 750 Million More Kilowatt Hours This plant is designed to operate around the clock, for use in carrying the "base load" of the Company. It is capable of producing over 750 million kilowatt hours of electrical energy a year. This amount of energy is approximately one-third of the present requirements of the Company and is two and one-half times the number of kilowatt hours used by all of its residential customers, and more than the total kilowatt hours used by all the rural customers in this State. In order to give you some further idea of the magnitude of this generating station, I would like to compare its capability with that of the Bugs Island hydro-electric plant now being constructed by the Federal Government on the Roanoke River just over the State line in Virginia. Now a hydro plant has two kinds of energy—the dependable kind, which always can be counted on for serving customers that require power every day of every year, and the so-called secondary or "dump" power, which is available only when there is enough water to make it and, therefore, is only useful to save fuel in steam electric stations. The dependable energy capability of the Bugs Island Plant, as determined by the Army Engineers will be 200 million kilowatt hours a year. The 750 million kilowatt hour capability of Lumberton is almost four times this amount. You may also have seen reference to the proposed hydro-electric plant at Roanoke Rapids, North Carolina, on this same Roanoke River. Its dependable energy is about 190 million kilowatt hours a year. This

Lumberton steam plant can produce about twice the number of dependable kilowatt-hours that can be generated by the two Roanoke River hydro plants added together. New Type of Design No doubt you, who are here, have noticed that the new plant looks unlike any other generating station you have ever seen. It is different. It is the first out-door type generating station burning coal ever to be built. Most of the equipment is outdoors, instead of being inside a big building. It represents the latest developments in power plant engineering and is highly efficient. The plant has an initial capacity of 120,000 horsepower to be supplied from two units of 60,000 horsepower each. Provision has been made for the installation of two additional units when studies of future requirements foretell their need. The first two units operating under full load will consume coal at the rate of 17 carloads per day. That coal will be fed automatically to the nine-story high boilers after it has been pulverized to the consistency of talcum powder. Gases from the burning coal will be dispelled by means of a stack 20 feet in diameter and 200 feet high. One hundred thousand gallons of water per hour in the boilers will be exposed to heat at 2700 degrees Fahrenheit. The resulting steam will be conveyed to the turbines at 1350 pounds of pressure per square inch and at a temperature of 955 degrees. After steam passes through the turbines, condensers will convert it back into water so that the same boiler water may be used over and over again. The condensers will require approximately 80,000 gallons of cooling water per minute. Faith in Area Serviced This plant was planned and the major equipment ordered back in the early part of 1946. There was no need for it at that time—it was built on our faith in the continued growth of this territory and in accordance with our long-established policy of making power available in advance of actual demand. You might be interested to know that this is the third steam electric plant now in our system, and in addition, we operate nine hydro-electric plants. There was a time when hydro-electric power was more economical than steam power, but the increase in the construction cost of hydros, the improvement in the efficiency of steam plants, as well as the factor of dependability, have changed the trend. Nevertheless, North Carolina in 1946 ranked fourth among the twenty-six states east of the Mississippi River in generation of hydro-electric power.

Another Plant Under Way About a year ago plans were made and orders placed for the first unit of another steam plant at Goldsboro. Preliminary construction work is in progress there, and we expect to have the first unit of that plant in service by the early part of 1951. These two new plants, together with other provisions made since the war, will provide Carolina Power & Light Company with new sources aggregating more than 2,000 million kilowatt hours of dependable energy per year. New power and energy in such quantity is assurance that there will be plenty of power in this area in the foreseeable future, and of course we do not intend to stop building facilities so long as our customers will use more electricity. No Power Shortage It is a matter of pride to us that since our Company was first organized in 1908, there has never been a time when we did not have all the power required for all the needs of the territory we serve. There has never been a power shortage in our area. During the war our Company not only supplied all requirements of the war production program, including the many military camps and the needs of all the customers in the territory it served, but in addition furnished several hundred millions of kilowatt hours of power for aluminum production, furnaces, shipyards, camps, and other needs outside its own territory. Preceding and during the early stages of the war, there were some doleful predictions that the country would be short of power. But the shortages never materialized. Secretary of the Interior, J. A. Krug, who was chairman of the War Production Board during the war, is authority for the statement that during World War II, "The power industry was never too little nor too late." When you recall the many shortages experienced during the war, and remember too, how the prices of other commodities increased, it is significant that electric power was available in plentiful supply at no increase in price. The investor owned utilities supplied more than 80 per cent of wartime electrical power requirements. What other industry can offer a better record? Rural Areas Electrified Since V-J Day in 1945 when the necessary materials were released for such purposes, we have built in North Carolina alone over 5,000 miles of rural lines and connected over 40,000 additional rural and farm customers. Also, our kilowatt-hour sales to all rural and farm customers have more than tripled during the period. In addition, elec-

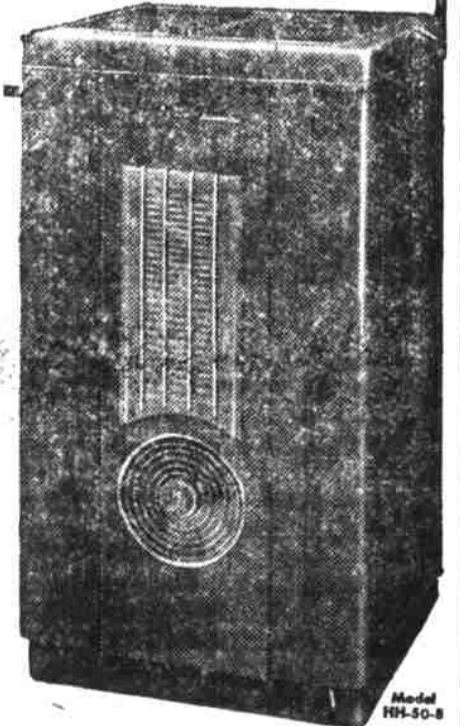
tric service has been made available to over ten thousand farm homes which, for reason or another, have not seen fit to take advantage of the service. We are working to the fullest with the R.E.A. in the service area. We recognize the fact that we have a common problem. Together we have the job of bringing service to as many farm customers in the State as possible. I think we have done a good job. Today we will endeavor to make electric service available to the relatively few rural farm homes in our area which are still out of electricity. Naturally, these are the most remote from service lines and who do not accept service when it is available to them. Our sales and the use of electricity grown rapidly. Since 1933, the total delivery of current has increased by more than 50 per cent every five years. We are serving today 235,000 customers, of which 78,000 are rural and farm customers. rates for electric service are low. Practicing Good Citizenship We try to be a good citizen in our town and community reached by our transmission system. Not only do our employees take an active interest in community but our Company this year will pay taxes to State, city, county, and federal agencies approximately five and one-half million dollars. We realize that good citizenship is our responsibility in return for the privilege we enjoy as a local industry to use the word "local" advisedly because our employees live in the area served, or our directors are citizens of either North or South Carolina. As of the first of month nearly half of the total investment in our Company's common and preferred stock was held by Carolinians. We have no stockholder. An eastern educational institution which owns less than two per cent of our largest stockholder. So there are people who have a stake in this plant, including the thousands of policyholders of the eleven life insurance companies which own our bonds. We appreciate the responsibility as the privilege of serving this large area of North and South Carolina. We pledge you a continuation of our best efforts in the half of the further development of this area—to provide ample power for all uses and to render the best possible service at the lowest rates commensurate with fair wages to employees and a fair return to stockholders. Other investors who have provided the funds necessary for our growth. We promise Governor Scott, our full cooperation in advancing the progress and prosperity of the Commonwealth.

To our knowledge, no industry has ever been lost to the area served by our Company because of a shortage of power.

CAROLINA POWER & LIGHT COMPANY

Up to 40% More Heat this winter with a NEW NORGE Home Heater From Rogers Electric Co.

Table listing heater models and prices: For 2 Rooms (37,000 B.T.U. — \$59.95), For 3 Rooms (50,000 B.T.U. — \$89.95), For 4 Rooms (55,000 B.T.U. — \$114.95), For 5 & 6 Rooms (70,000 B.T.U. — \$124.95)



- Only Norge Gives You this Combination of Money-Saving Features: Heat Exchanger (porcelain-lined inside and out), Downdraft "Whirlator" Tube, Triple-Air Oil Burner, Single-Dial Heat Selector, Constant-Level Meter Valve, Sure-Flo Oil Tank (6 gallons), Tell-Tale Visible Oil Gauge, Automatic Draft Regulator, Porcelain-Enamel Humidifier.



All Heaters we install are Guaranteed and Serviced Free of Charge for One Year.

Fuel Tanks Available in 55, 250, 550 and 1000 Gallon Sizes

ONLY 10% DOWN Balance on easy monthly payments. ROGERS ELECTRIC CO. Phone 461 Main Street