

MORE ABOUT Sidelights

(Continued from page one) head of a demon, were on display at C. E. Ray's Sons. And sales were reported as "good."

Dark Churches

Waynesville's three largest churches were dark as midnight Sunday night—not an evening service at either the Methodist, Baptist or Presbyterian churches.

NCHSAA Rules Sylva Tackle Is Eligible

The North Carolina High School Athletic Association ruled Sylva's 200-pound tackle, Zollie Eincannon, eligible for Smoky Mountain Conference competition.

The Association's ruling, made on the eve of Friday night's Sylva-Andrews game at Andrews, reversed an early-season decision of the Smoky Mountain Conference.

At the same time it boosted the Golden Hurricane's chances of winning the 1945 Conference title.

The Smoky Mountain Conference declared Eincannon ineligible the day before Sylva met Hayesville early last month in its opener, a Conference game.

This ruling was based on testimony that Eincannon had played in a game in 1945. In this situation, Eincannon would have completed his four years of eligibility last season.

However, the state association's ruling last week, announced by Executive Secretary Hap Perry, termed the earlier testimony as merely hearsay evidence.

With Eincannon out of the lineup, Sylva and Hayesville, the 1948 champion, played to a scoreless tie. The next Friday night, Eincannon was a defensive star as the Golden Hurricane held the Waynesville Mountaineers to a 6-6 tie. This, however, was a non-conference game.

A Lot Of Signing For Governor



North Carolina's Gov. W. Kerr Scott uses a multiple signing machine to put his signature on 20 bonds at one time at the Signature Company in New York. He is signing 50,000 state bonds of a new issue. Each bond is for \$1,000. Even with the multiple machine, it was estimated about eight hours would be required for the governor to complete the job. State Treasurer Brandon P. Hodges watches. He must sign the bonds, too. (AP Photo.)

MORE ABOUT Poultry Program

(Continued from Page 1) its sources of supply for eggs away from Gamesville and into Western North Carolina.

The altitude and humidity here, Mr. Schnell declared, mean that the eggs will have up to 15 per cent greater "hatchability" than those produced in lower, warmer and drier areas.

This means that of a given number of eggs produced in this area, a greater percentage of them will hatch into chicks than those produced in lower country.

He recommended that a new business should start with at least 400 to 500 chickens.

If enough poultry men are interested, Mr. Schnell added, he would assign a permanent representative of his firm to this area.

W. E. Brookshire, one of the field representatives of the firm who attended the meeting, will return to Haywood County soon to interview people who are interested in starting hatching egg production.

Mr. Wells told the farmers the Commission primarily is interested in developing the county's poultry business and finding markets for the production.

The selection of particular markets, he added, was up to the individual poultry raiser.

Mr. Fullenwider, Mr. Lovett, and Mr. McMillan, other field representatives of the Gamesville firm, also participated in the discussion.

MORE ABOUT Boy Scouts

(Continued from page one)

ing cribbing, filled with dirt, with a board front. The dam gave some trouble during the recent high waters, and is constantly in need of repairs, Mr. Garner said.

In 1947, a group from Canton contributed a hot and cold water system, including a reservoir, which is fed from a spring high up on the mountain. Later a walk-in refrigerator was donated to the camp, and in 1947 a group from Hendersonville installed electric lights in the camp.

In spite of rising food costs, Mr. Garner said, the cost per boy per week at camp is held down to \$9. The camp boasts of a staff of 17, who give the campers a well-rounded program of boating, swimming, handcrafts, archery, and rifle range practice. In addition to Scoutcraft and hiking.

The average day in camp starts at 6:45 a. m. and ends at 9:30 p. m. after a camp fire service.

This year 429 boys attended during the six-week session.

Over A Million Motor Vehicles Registered In N. C.

RALEIGH—The Department of Motor Vehicles announces an all-time high in motor vehicle registration, the figure being 1,001,189 as of 13 October 1949.

The registration for the entire year, 1948 was 958,542. On this same date in 1948, the registration was 935,495, a gain in 1949 of 65,794.

North Carolina registration plates are not large enough to carry 7 numerals of the same size as the ones now in use and the letter "W" with 5 numerals is the new plate to denote the one million series.

Numerous "W" plates will be noticed on the highways from this date on. The letter "W" has no particular significance other than a letter not now being used in the manufacture of the several types of license plates.

Read the Mountaineer Want Ads.

Duke Students Boycott Buses With Hike In Fare



Students of Duke University at Durham, are boycotting buses of the Duke Power Company because fare has been raised from five cents each to three tokens for a quarter. Two buses, empty and ignored, stand in the background while the boys crowd around private automobiles. The buses operate between the men's and women's campuses of the university, a distance of a mile and a half. (AP Photo.)

Do Bear Dogs Ruin Deer Hunting? We'll Soon Know

Do bear dogs spoil deer hunting? That's the question a North Carolina bear hunter will try to answer in the negative this month.

Bill Plott and 10 other Haywood County hunters took 22 Plott bear hounds to Michigan last week in an effort to prove his contentions. Plott is directing a six-day experimental hunt being sponsored by the State-operated Michigan Conservation Club. Plott is a great-grandson of the man who introduced the now famous Plott hound here in 1750.

Many deer hunters contend that dogs hunting bear cause the deer which happen to get in their way to become nervous and jittery, thus making them unsatisfactory game when the deer season opens shortly after the end of the bear season. Plott doesn't believe it. He says bear dogs only rarely stray from bear business if a deer crosses the track.

Plott said bear hunting with dogs is illegal in Michigan. He

said 50 Michigan hunters would join his party on each of the six days the experimental hunt, starting Oct. 25, is held. He went to Lake City, Mich., Oct. 22 to spend the time before the hunt in looking over the 70,000-acre hunting area in Missaukee County.

During the week before his departure Plott ran his pack of dogs on mountain tracks in order to pick the best 22 for the trip.

"You always find a weak one in any pack," he commented, "and we run 'em through trials to pick the best."

Actually, he's a bit concerned about the safety of his dogs. "The one disadvantage of hunt-

football scores

HIGH SCHOOL

- Waynesville 28 Christ School 0 Morganton 14, Canton 13, Salisbury 20, Asheville 6, Sylva 13, Andrews 0, Marion 39, Hendersonville 0, Bryson City 25, Tryon 0, Franklin 13, Robbinsville 6.

COLLEGE

- Appalachian State 21, High Pt. 7, Wofford 14, Presbyterian 7, Miami, Fla. 13, Georgia 9, So. Carolina 27, Clemson 13, LSU 13, North Carolina 7, Duke 55, VPI 7, Wake Forest 55, William and Mary 28, Maryland 13, N. C. State 6, Richmond 28, Davidson 7, Tennessee 36, Tennessee Tech 6, Michigan 14, Minnesota 7, Western Carolina 14, Lenoir Rhyne 0.

Even without Eincannon in the lineup in the subsequent Smoky Mountain games, the Golden Hurricane went undebated to remain a strong contender for the title. The Hurricane's only loss this season so far is a 6-0 decision to the Asheville-Biltmore College junior varsity.

Clyde School To Have Carnival Friday Night

The annual Halloween Carnival at Clyde School will be held on next Friday night, October 28, beginning at 7 a. m., according to announcement by Mrs. Mary Brooks, chairman.

Election of two queens, one from the elementary grades and another from high school, will be the main attraction of the evening program.

Committees named by Mrs. Brooks to direct various activities include: collection at door, Stanley Livingston, chairman, and Mrs. Brooks; decoration and arrangement, Miss Hattie Freeman and Robert C. Evans, co-chairmen, Clyde Smith; cake walk and sale, Mrs. Mary Brown; fortune telling, Mrs. Edith Canton; haunted house, Carroll Morrow, chairman, and Clyde Smith; fish pond, Mrs. Ellen Haynes, chairman, and Mrs. Clem Cogdill; pie contest, Miss Gladys Chadwell, chairman, pig-in-the-poke contest, Mrs. Howard Shook, chairman, Miss Monica Garrett, Mrs. Brooks, and Mrs. D. D. Gross; popularity contest, Miss Sara Long, chairman, Mrs. Elmer Goodson, Miss Lura Mae Greene and Miss Claire Howell; costume parade, Mrs. Edith White; "gasoline alley," Mrs. Alice Haynes and John Byers; guess for the rooster, Robert Evans.

Clyde Women To Observe Week Of Prayer

The Woman's Society of Christian Service of Clyde Methodist church will observe Week of Prayer Thursday with an all-day meeting at the church.

A special invitation has been extended to the town's Baptist women and women of other denominations, Mrs. Levi Morgan, W.S.C.S. president, said.

The service is to begin at 10 a. m., and lunch will be served at noon.

Adm. and Mrs. W. N. Thomas of Lake Junaluska, spent the weekend in Durham and attended the ceremonies of installation of Dr. Hollis Edens as president of Duke University. Adm. Thomas took part on the program.

Enter FORD'S \$100,000 CAR-SAFETY CONTEST and get this attractive reflector installed FREE! SEE ANY FORD DEALER NOW!

What is it worth to You...



WHEN YOU WANT TO:

- Run an errand downtown Call a doctor Chat with friends Reach someone in a hurry

The true value of your telephone can be measured only in the many different ways it serves you—in the convenience and pleasure it adds to daily life.

Your telephone service is increasing in value day by day as the number of friends and relatives you can call keeps growing larger, and service becomes faster and better.

Yet the cost is low. Low in comparison to most other things you buy. Low in comparison to our costs of supplying service. Your telephone is at your service twenty-four hours every day—for only a few cents a day.

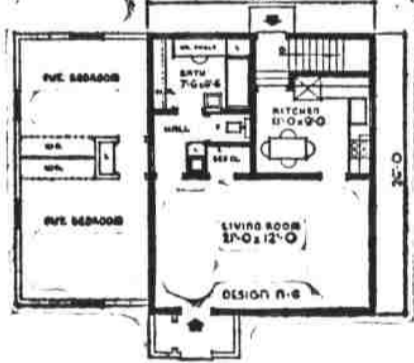
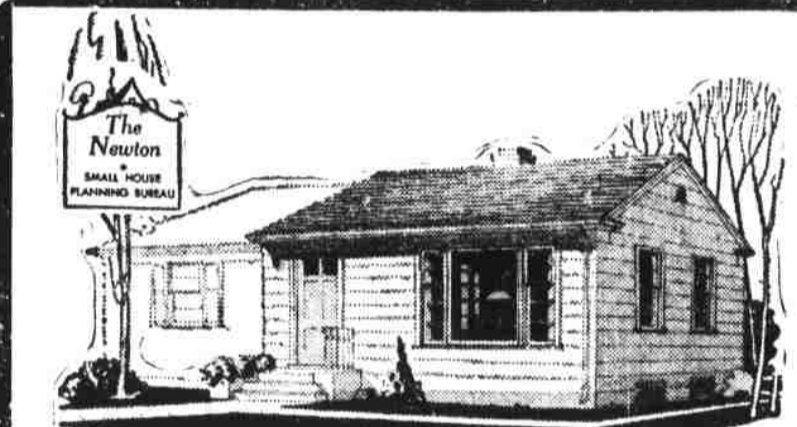
When you stop to think how much it does for you, at the price you pay, telephone service stands out as one of today's biggest bargains.

SOUTHERN BELL TELEPHONE AND TELEGRAPH COMPANY

HURRY HURRY HURRY ONLY 7 MORE DAYS TO GO IN FORD'S \$100,000 Car-Safety Contest GET YOUR FREE SAFETY CHECK-UP AND ENTRY BLANK TODAY DAVIS-LINER MOTOR SALES

HOUSE of the WEEK

Each Week, In This Space, You'll Find "The House of the Week" With Full Description. This Series Is Made Possible By Local Firms That Are Listed Here. They'll Be Pleas... Help You With Your Building and Home Furnishing Problems.



THE NEWTON can be built in units. The first unit covers an area of only 22 feet by 26 feet and provides the equivalent of a one room and kitchenette apartment. There is a bed closet in the living room and dining space in the compact kitchen.

The Newton, combining room and dressing room, wardrobe, as well as a linen closet and a built-in dressing table, is an excellent arrangement in a small space. The bedroom unit is set back to break the wall and roof when they are added at a date.

A full basement under the unit of The Newton necessarily have to be excavated since no further plumbing is necessary in any future addition, but can be added, if desired.

The Newton's plan deserves study. It is one solution of a problem of building suitable accommodations within a budget.

The Newton's first unit floor area of 528 square feet, is a volume of 10,032 cubic feet including the basement.

For further information THE NEWTON, write the House Planning Bureau, St. Minn.

Small House Planning Bureau St. Cloud, Minnesota Please send me more information, without obligation, about the plan features and the type of construction used in THE NEWTON House as pictured in The Mountaineer. Name Address City State

Your Advertising Message In THE MOUNTAINEER Is Read By More Than 20,000 Potential Customers Twice Weekly

Our Listings include lots ideally suited to this type house—See Us Before You Buy— AND When you've completed your house Be Sure to INSURE Your House With The L. N. Davis Insurance Co. PHONE 77 MAIN STREET

A Southern Institution Serving Southern People For Over 50 Years Sterchu Free Delivery Within 50 Miles of Asheville, Hendersonville

Watch this Feature for Modern New Home Plans to be Published Each Week