

GO TO CHURCH

At The Churches

Haywood Circuit Methodist Church

Rev. V. N. Allen, Pastor
Clyde, N. C.

TEACHING SCHEDULE

Sunday, 11 a.m. — Spring

Sunday, 3 p.m. — Fines

Sunday, 11 a.m.—Piney

Sunday, 7:30 p.m.—Lou-

Sunday, 11 a.m. — Fines

Sunday, 7:30 p.m. — No

Sunday, 11 p.m.—Louisa

Sunday, 7:30 p.m.—Piney

Sunday, 7:30 p.m.—Piney

Sunday, 7:30 p.m.—Piney

Sunday, 7:30 p.m.—Piney

Sunday, 7:30 p.m.—Piney

Sunday, 7:30 p.m.—Piney

Sunday, 7:30 p.m.—Piney

Sunday, 7:30 p.m.—Piney

Sunday, 7:30 p.m.—Piney

Sunday, 7:30 p.m.—Piney

Sunday, 7:30 p.m.—Piney

Sunday, 7:30 p.m.—Piney

Sunday, 7:30 p.m.—Piney

Sunday, 7:30 p.m.—Piney

Sunday, 7:30 p.m.—Piney

Sunday, 7:30 p.m.—Piney

Sunday, 7:30 p.m.—Piney

Sunday, 7:30 p.m.—Piney

Sunday, 7:30 p.m.—Piney

Sunday, 7:30 p.m.—Piney

Sunday, 7:30 p.m.—Piney

Sunday, 7:30 p.m.—Piney

Sunday, 7:30 p.m.—Piney

Sunday, 7:30 p.m.—Piney

Sunday, 7:30 p.m.—Piney

Sunday, 7:30 p.m.—Piney

Sunday, 7:30 p.m.—Piney

Sunday, 7:30 p.m.—Piney

Sunday, 7:30 p.m.—Piney

Sunday, 7:30 p.m.—Piney

Sunday, 7:30 p.m.—Piney

Sunday, 7:30 p.m.—Piney

Sunday, 7:30 p.m.—Piney

Sunday, 7:30 p.m.—Piney

Sunday, 7:30 p.m.—Piney

Sunday, 7:30 p.m.—Piney

Sunday, 7:30 p.m.—Piney

Sunday, 7:30 p.m.—Piney

Sunday, 7:30 p.m.—Piney

Sunday, 7:30 p.m.—Piney

Sunday, 7:30 p.m.—Piney

Sunday, 7:30 p.m.—Piney

Sunday, 7:30 p.m.—Piney

Sunday, 7:30 p.m.—Piney

Sunday, 7:30 p.m.—Piney

Sunday, 7:30 p.m.—Piney

Sunday, 7:30 p.m.—Piney

Sunday, 7:30 p.m.—Piney

Sunday, 7:30 p.m.—Piney

Sunday, 7:30 p.m.—Piney

Sunday, 7:30 p.m.—Piney

Sunday, 7:30 p.m.—Piney

Sunday, 7:30 p.m.—Piney

Sunday, 7:30 p.m.—Piney

Sunday, 7:30 p.m.—Piney

Sunday, 7:30 p.m.—Piney

Sunday, 7:30 p.m.—Piney

Sunday, 7:30 p.m.—Piney

Sunday, 7:30 p.m.—Piney

Sunday, 7:30 p.m.—Piney

Sunday, 7:30 p.m.—Piney

Sunday, 7:30 p.m.—Piney

Sunday, 7:30 p.m.—Piney

Sunday, 7:30 p.m.—Piney

Sunday, 7:30 p.m.—Piney

Sunday, 7:30 p.m.—Piney

Sunday, 7:30 p.m.—Piney

Sunday, 7:30 p.m.—Piney

Sunday, 7:30 p.m.—Piney

Sunday, 7:30 p.m.—Piney

Sunday, 7:30 p.m.—Piney

Sunday, 7:30 p.m.—Piney

Sunday, 7:30 p.m.—Piney

Sunday, 7:30 p.m.—Piney

Sunday, 7:30 p.m.—Piney

Sunday, 7:30 p.m.—Piney

The Golden Text



John the Baptist, preaching.

"Bring forth therefore fruits worthy of repentance."—Luke 3:8.

Inman's Chapel

(Universalist)

LAKE LOGAN

The Rev. F. B. Bishop

Pastor for Summer

Sunday School at 10:00.

Church services at 11:00.

Sermon topic: "Why be a Uni-

versalist?"

The Warren Family Reunion will

be held on this day. Mr. and Mrs.

Holman have ten children, 41

grandchildren, and 11 great-grand-

children. These, along with the

sons and daughters-in-law and

friends are all invited to attend and

have dinner on the grounds after

services.

Salvation Army

WAYNESVILLE—Mountain

Mission District

Major Cecil Brown, O. F.

WAYNESVILLE CENTER

East Street

Mrs. Lee Ray, Y.P.S.M.

10:30 a.m. Sunday School.

7:30 Sunday evening service.

7:30 First Wednesday. Ladies'

Home League.

7:30 Second Wednesday. Soldier's

meeting.

7:30 Third Wednesday. Junior

Legion.

7:30 Fourth Wednesday. Family

Night.

MAPLE SPRINGS District

Headquarters. Officer's Quarters,

and Children's Home. On Max

Patch Road.

Branch Lowe, Matron.

10:00 a.m. Sunday School.

11:00 Morning Worship.

7:30 Tuesday Evening Bible

Class.

LITTLE CREEK:

Jessie Lowe, Y.P.S.M.

10:00 a.m. Sunday School.

11:00 a.m. Morning worship.

7:30 p.m. Wednesday prayer

meeting.

BONNIE HILL:

Perry Gowan, C.S.M.

2:00 p.m. Sunday School.

7:30 p.m. Fourth Sunday Evan-

gelistic Service.

SHELTON LAUREL:

Archie Rathbone, Y.P.S.M.

2:00 p.m. Sunday School.

3:00 p.m. Salvation meet.

2:30 p.m. Home League each

Third Wednesday.

Everyone is cordially invited.

Lake Junaluska Baptist Church

The Rev. O. J. Beck, Pastor

Sunday

10 a. m.—Sunday School, D. R.

Riley, general superintendent.

11 a. m.—Preaching services on

the first and third Sundays.

7 p. m.—Training Union meets

every Sunday, with Mrs. Carey Mc-

Cracken, director.

8 p. m.—Preaching services on

the second and fourth Sundays.

Wednesday

7:30 p. m.—Mid-week prayer serv-

ices.

Church Of God CANTON

The Rev. C. E. Westmoreland,

Pastor

Saturday night—

7:15 O'clock—WPE Service.

Sunday—

10 a. m.—Sunday School.

11 a. m.—Preaching Service.

7:30 p. m.—Evangelistic Service.

Wednesday—

7:30 p. m.—Mid-week prayer

meeting.

DELLWOOD BAPTIST CHURCH

Rev. George Mehaffey, Pastor

Morning Worship at 11 o'clock,

with the sermon by the pastor.

Prayer meeting Friday night at

the homes.

Bible study conducted by the

pastor Wednesday night.

B. T. U. meets on Sunday night.

The church bus operates for all

services.

Burnett Siding Baptist Church

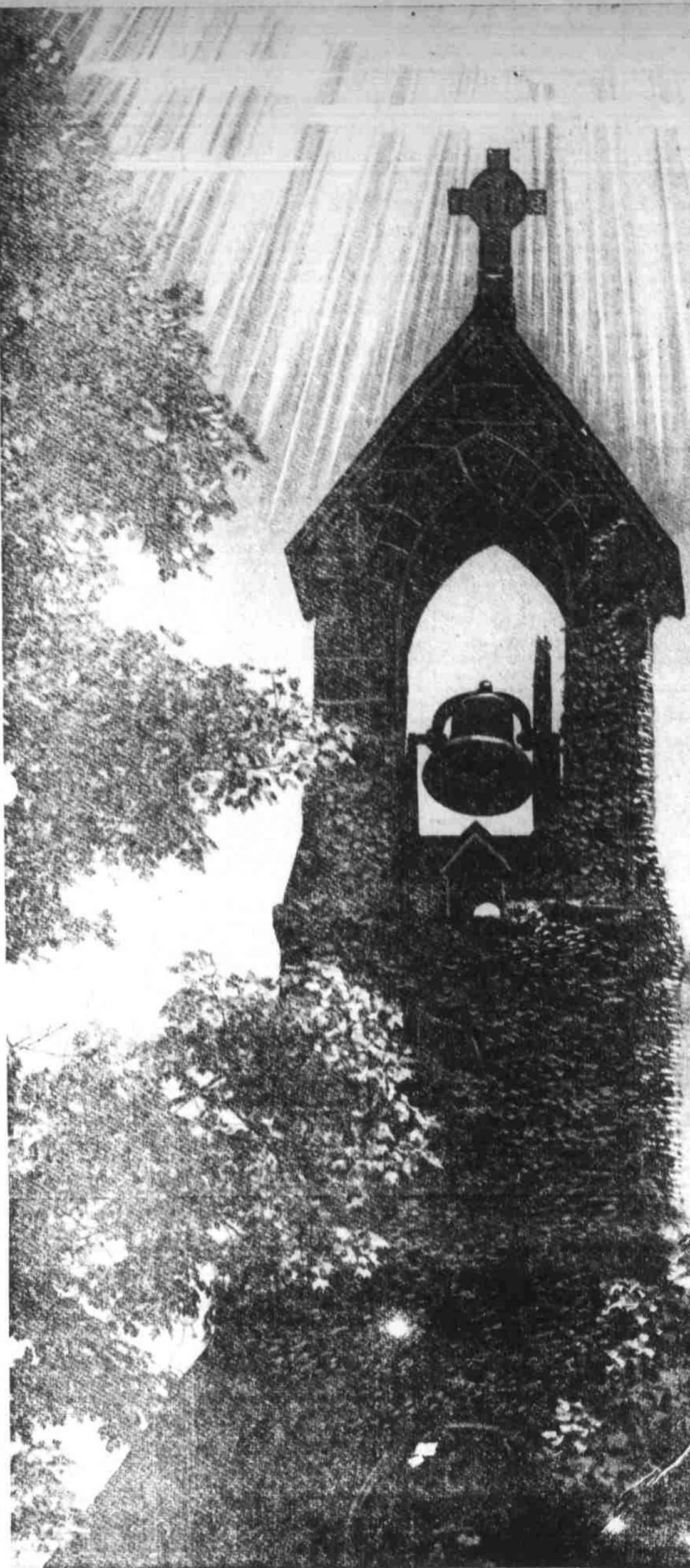
The Rev. Joe Williams Pastor

10 a. m.—Sunday School, Vaughn

Rogers, Superintendent.

11 a. m.—Preaching Services on

the first and third Sundays.



LISTEN CLOSELY!

Another weekend is here! Soon the Church bells will again tell us that it's Sunday morning.

How are we to spend this day? A picnic or an outing might be fun, or maybe a visit to Aunt Mary's. Of course, we can turn over and go back to sleep, or maybe we should complete that delayed chore. As individuals, we have these choices to make—and more.

But as human beings whose destiny is guided by a greater power, we have no choice. Our blessings and our very lives have been bestowed and not earned. They have been entrusted to our care while on earth, and they are not ours to squander or to abuse.

If you begin now to attend Church regularly and to support its work, you will want no other choice—for you will be turning an obligation into a great joy. As men and women, it is our divine privilege to dedicate one day each week to the glory of our Benefactor.

Listen to the Church bells ringing on Sunday morning! Listen closely, for this is a day of worship, of prayer and thanksgiving.



THE CHURCH FOR ALL... ALL FOR THE CHURCH

The Church is the greatest factor on earth for the building of character and good citizenship. It is a storehouse of spiritual values. Without a strong Church, neither democracy nor civilization can survive. There are four sound reasons why every person should attend services regularly and support the Church. They are: (1) For his own sake. (2) For his children's sake. (3) For the sake of his community and nation. (4) For the sake of the Church itself, which needs his moral and material support. Plan to go to church regularly and read your Bible daily.

	Book	Chapter	Verses
Sunday	Psalm	42	1-11
Monday	James	3	13-18
Tuesday	1 John	3	7-12
Wednesday	Luke	22	24-27
Thursday	1 Corinthians	12	12-18
Friday	Isaiah	5	18-23
Saturday	Psalm	139	7-12

This Series of Ads Is Being Published Each Week in The Waynesville Mountaineer Under the Auspices of the Haywood County Ministerial Association, and Is Being Sponsored by the Following Patriotic Individuals and Business Establishments:

Belk-Hudson Company

"Home of Better Values"

Main Street, Waynesville Phone 140

James Furniture Company

"Low Prices Keep Us Busy"

Main Street, Waynesville Phone 769

Sherrill's Studio

Portraits — Photo Finishing — Framing

110-112 Depot Street, Waynesville Phone 184

Cagle Furniture Company

Your Hot Point—Philco—Maytag Dealer

Dial 3379 Clyde, N. C.

E. J. Lilius, Jeweler

Diamonds — Watches — Jewelry

Watch and Jewelry Repairing

Waynesville Phone 33

Smith's Drugs

A Carolina Institution Since 1925

Waynesville Phone 25

Canton Motor Company

Beick and Willys Jeep Sales & Service

101 Park Street, Canton Phone 2920

Massie Furniture Co.

Waynesville Phone 33

Leatherwood & Francis

Washing — Greasing — Polishing

Asheville Road Waynesville

R. R. Kibbe, Jr. Consignee

Distributor of Texaco Products

Telephone 632 or 105-R

"The Best The Market Affords"

Carolina Mutual Insurance Agency

"Dividend Paying — Non-Assessable"

226 Main Street, Waynesville Phone 331

Rogers Electric Company

Sales and Service of All Electrical Appliances

437 Main St., Waynesville Phone 461

The Towne House

Main St., Waynesville Phone 111

Underwood Sinclair Service

Main Street, Waynesville Phone 9170

Waynesville Auto Parts

Wholesalers of Standard Parts and Accessories