

Library At WCTC Gets Additional Facilities

CULLOWHEE — (Special) — A new set of books has recently been added to the college library facilities. This new equipment will enable the library to obtain rare, out-of-print, and expensive editions at a low cost. Mrs. Lillian Buchanan, librarian, said. Many publications have been entirely lost, so far as the library is concerned, if they depend on finding and buying the rare item, she said.

Also the answer to the ill-fated problem. A three-volume set of books can be put on eight 2x5 cards.

The reader, which resembles a book receiving screen, may be used by several students at the same time, thus making material available to more than one student.

In addition to more volumes for reading, the library also has a micro-film reader and a micro-film projector. The micro-film reader is the New York Times.

Want Ads for quick results.

KEEP TONIGHT!

Working when sleepless nights...
 Restless and turning...
 In the morning, NORMALIN...
 Can help bring calm, refreshing...
 Nervous tension threatens normal...
 NORMALIN TABLETS are non-habit...
 safe to use. Take as directed...
 Only approved ingredients. Guaranteed...
 or money refunded. NO PRESCRIPTION NEEDED. Clip this message...
 getting genuine NORMALIN...
 is on sale today at...

SMITH'S DRUG STORE

Buy Your Next Insurance

Automobile
 Burglary
 Liability
 Accident & Health
 and other coverages

on the MONTHLY PAYMENT PLAN

THE INSURANCE which we always carried... and protection which you've always wanted... combine them all into one simple program of financial protection and pay for it in convenient amounts over a period of months.

Under the new Del Mar Plan, your premiums total \$100, for example, your initial cost is a cash payment of \$20. Monthly payments range from 4 to 9 cents.

The L. N. Davis Co.
 Phone 77
 Waynesville, N. C.

New Mercury Is Being Shown Here



Featuring the new Merc-O-Matic automatic transmission, the 1951 Mercury combines many styling and engineering changes. The Merc-O-Matic, developed by Ford Motor Company engineers, is a combination of a torque converter and three-speed transmission which results in a smoothly operating, pleasantly performing drive. New rear fenders and quarter panels, a new grille and front end trim, new bumpers and an extra-large rear window give the 1951 Mercury an ultra-smart appearance. Added smoothness, quietness and an increase in horse-power are present in the improved 112 hp V-8 Mercury engine. New colors and interior trims add to the distinctiveness of the 1951 Mercury. Shown here is the four-door sport sedan.

New Mercury Car Going On Display Here Tuesday

Waynesville Motor Sales tomorrow will display the new 1951 Mercury in their showrooms and unveil for public showing the automobile industry's newest automatic transmission—the Merc-O-Matic.

Combining a torque converter and a three-speed transmission, the Merc-O-Matic provides the equivalent of a four-speed unit. It has a high degree of flexibility, smooth acceleration, improved high gear performance, and a low axle ratio with resulting lower engine speeds while cruising.

The Merc-O-Matic will be one of three transmissions available on the 1951 Mercury—the others being the standard transmission and standard with Touch-O-Matic overdrive.

Many striking styling and functional changes have been made in the 1951 Mercury. A new grille and front end trim, new rear fenders and quarter panels, new bumpers and an extra-large rear window are the principal exterior changes.

Even more pronounced are the new rear fenders which have been changed completely, extending in a bold sweep to the extreme end of the car. Large combination tail light and directional signals, outlined in chrome, are other changes in the 1951 model.

A huge rear picture window, 29 per cent larger than in previous models, gives added vision, with over 1,000 square inches of unobstructed glass.

New designs in body hardware, trim scheme, upholstery and steering wheel are styling changes which complement the beauty of the exterior.

Several important improvements to the Mercury engine have resulted in an increase in power, giving it a rating of 112 hp. Among the engine refinements are a more accurately balanced crankshaft, selective fit of all main bearings, and a new camshaft which incorporates a new triple ramp on the exhaust cam and a longer quieting ramp on the intake.

New exterior colors and color combinations are featured on the 1951 Mercury. They are, in addition to black: Banning blue metallic.

Ned Noblitt Named Head Of WCTC Senior Class

CULLOWHEE — (Special) — Ned Noblitt of Marion was named to fill the position of Senior Class President at Western Carolina Teachers College during the first meeting of the class. Dick White, senior from Asheville, was elected Vice-President and Dr. Newton Turner, professor of Geology, was elected Class Sponsor.

Noblitt, formerly the Vice-President of the Senior Class, took over his new position when a vacancy was created by Clyde Etheridge. A motion was made by Student Body President Herbert Hyde to the effect that the President's office be filled by the vice-president. The motion was carried.

Etheridge was elected president of the Senior Class last year in the annual elections. At the time of his election he was absent from the campus. He was planning to return to school this fall, but was called by the Naval Reserve to active duty.

Noblitt, a member of the W.C.T.C. football squad, has been active in campus circles for the past three years. Last year he was treasurer of the Junior Class. He held the position of Business Manager in the Monogram Club. He has also served on the Council of the Men's House Government. This year he is vice-president of the Business Club.

Dick White came to W.C.T.C. from Asheville-Biltmore College last year. He is a member of the Catamount football squad.

Dr. Newton Turner has for the past two years been the sponsor of the Senior Class. He formerly taught at the University of Tennessee and at the University of North Carolina.

Everglade green, Luxor maroon metallic, Kerry blue metallic, Mission gray, Coventry green-gray, Tomah Ivory and Sheffield green. Vassar yellow is exclusive for the convertible. A selection of nine two-tone combinations also is available.

Body styles on the 1951 Mercury are: six-passenger coupe, four-door sport sedan, convertible, station wagon and the customized six-passenger Monterey coupe.

Check Child's Hearing
 Typical childhood diseases like measles, mumps, scarlet fever, diphtheria, meningitis and influenza, can bring on hearing conditions, which, unless given immediate medical attention, will result in permanent deafness. Parents should have their children's hearing checked after these childhood illnesses.

MORE ABOUT Younger Set

(Continued from Page 1)

Charles Isley and Robert Campbell, played "America" before coming on the field. Coming down the field they played "Over There." The lights on the field then went out and the band formed three lighted crosses, playing "There's a Long, Long Trail A-Winding." This was a symbol of the crosses that are placed on the graves of the men who give their lives for their country.

After the band members had finished the number and turned off their lights, a floodlight was turned on a U. S. flag and they played "She's a Grand Ole Flag."

Next they formed the letters: "USA" for the United States of America. The "U" was red, the "S" was white, and the "A" was blue. In this formation the band members sang "America The Beautiful" in four parts and it was truly beautifully done.

From that they went into the letters "UN," standing for the United Nations, and played "Marching Along Together." The "U" was white and the "N" blue because the UN's colors are blue and white.

The next formation was a bell. It was to call to everyone's attention the Freedom Bell which is to ring on October 24th. For the bell they used blue lights.

While they were still in the bell formation the oldest bell in Haywood County was brought on the field and rung.

They then left the field playing the school song.

The program was very patriotic and seemed to leave with the people who witness it a feeling

SILVER THREADS AMONG THE GOLD



PREPARING TO CELEBRATE their 70th wedding anniversary in Butler, N. J., Mrs. Eliza Jane Francisco sits at the piano while her husband, Morace, sings "Love's Old Sweet Song." Both are 95. (International)

of appreciation of the freedom that is theirs. It also brought to their minds the crucial wars that are always going on in the world and the fact that through constant prayer and constant remembrance of these freedoms we may be able to have lasting peace in this world.

'Bill' Gillispie Named Vep Of W. Athletic Unit

CULLOWHEE — (Special) — Virginia "Bill" Gillispie was elected Vice-President of the Women's Athletic Association at a meeting held in Moore Parlor. Other officers elected are Golda Rice, secretary; Jo Edith Morgan, treasurer; Helen Cabe, reporter.

President Opia Davis presided over the election and called for support of the newly elected officers. Plans for the W.A.A. to sponsor a Fun Night were formulated.

Fun Night is to be held every two weeks. Swimming, ping pong, badminton, shuffleboard and card games will be part of the activities. Also, there will be round and square dancing, highlighted by a cake walk. Look for the future schedule on the bulletin board.

JONATHAN CDP TO MEET
 The regular meeting of the Jonathan Creek Community Development Program will be held at the school at 7:30 P. M. Wednesday.

A Three Days' Cough Is Your Danger Signal

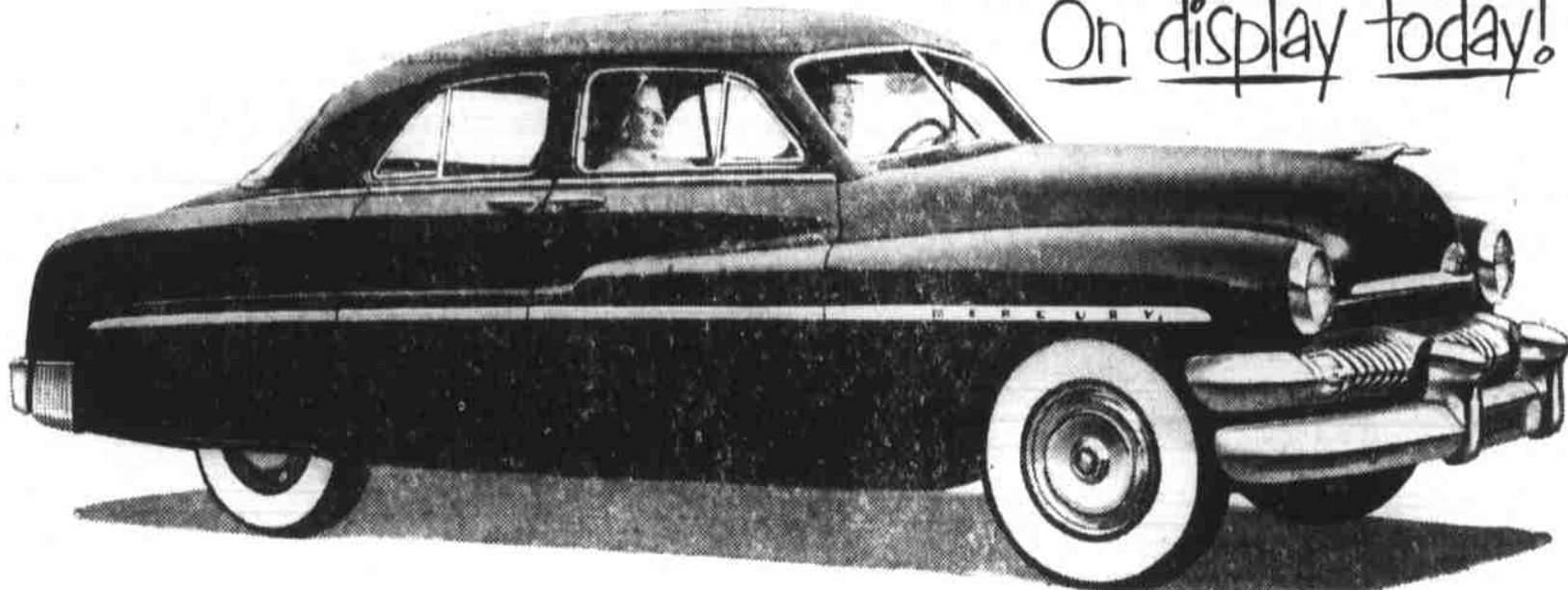
Creomulsion relieves promptly because it goes right to the seat of the trouble to help loosen and expel germ laden phlegm and aid nature to soothe and heal raw, tender, inflamed bronchial membranes. Guaranteed to please you or money refunded. Creomulsion has stood the test of millions of users.

CREOMULSION
 relieves Coughs, Chest Colds, Acute Bronchitis

Announcing the New 1951 MERCURY

with MERC-O-MATIC DRIVE

On display today!



WHAT A CAR! WHAT A DRIVE! What a combination! New 1951 Mercury with the amazing Merc-O-Matic Drive!

Your first look will tell you that here is a car brimming over with eye-filling features: New styling, new interiors, new trim... new beauty for a beautiful new car!

Your first drive will tell you that Merc-O-Matic

is an automatic transmission with everything: Honeyed smoothness, positive pickup, overall economy, and safety. It does all the work while you sit back and relax.

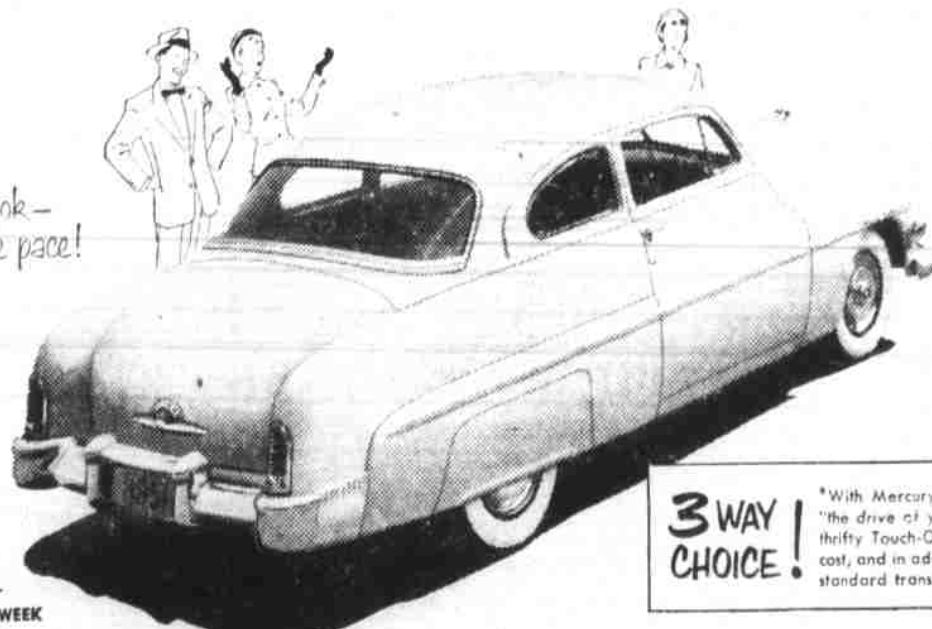
There's new comfort and safety, too. A new improved ventilating system—a new "wide-horizon" rear window with more than 1,000 square inches of unobstructed viewability.

And there are dozens more thrilling new features for you to see and enjoy.

Come on over and see this big, beautiful 1951 Mercury in our showroom. Let us give you the facts about "the drive of your life!" When you consider all of Mercury's built-in quality advantages, we think you'll agree it's "the buy of your life!" There's nothing like it on the road!

for "the drive of your life"

A sweeping new look—to set the 1951 style pace!



Merc-O-Matic Drive is the simpler, smoother, more efficient automatic transmission!

3WAY CHOICE!

*With Mercury for 1951, you have a triple choice for "the drive of your life"—new Merc-O-Matic Drive and thirty Touch-O-Matic Overdrive are optional at extra cost, and in addition, there's the Silent-Ease synchronized standard transmission.

Get to Know Your Dealer Better—
 NATIONAL AUTOMOBILE DEALER WEEK
 OCTOBER 22ND THRU 28TH

WAYNESVILLE MOTOR SALES

Main Street

Waynesville

HENRY DAVIS

invites you to see

THE NEW

1951 MERCURY

with new MERC-O-MATIC drive



Merc-O-Matic Drive optional equipment at extra cost

NOW ON DISPLAY AT OUR SHOWROOMS

Waynesville Motor Sales

Main Street

Waynesville