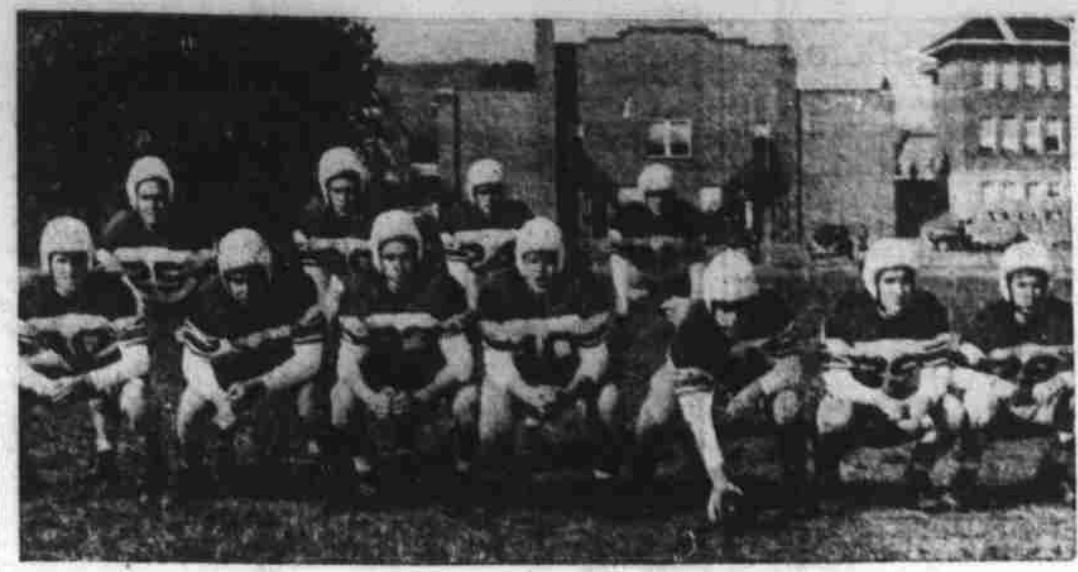


Mountaineers Play Blue Devils; Bears Meet Bearcats

HS Expects Long Argument Home Field

Waynesville's Mountaineers and Hendersonville's Blue Devils will tangle Friday night in a Blue Ridge League attraction. Kickoff time is 7:30 P. M. Carleton Weatherby's boys put up their heavy drills yesterday afternoon with a brisk scrimmage of the same type as they went to the day before. Head coach reported his boys were in good shape but there was one exception. Wade Francis, casualty of Hendersonville game two weeks ago, still listed as doubtful. His injury has been repairing, but Weatherby said his Mountaineers could expect a stiff argument. Forecast was based on observations at the Brevard-School game.

Bethel Gridders Line Up For Practice Run



These boys make up part of Bethel High School's 1950 football squad. In the line, left to right: J. V. Allen, Jerry Gibson, D. B. Gibson, Charlie Blaylock, Jimmy Campbell, Guy Mease, and Kenneth Lowe. Backs, left to right: Harry Stevenson, Edwin Lowe, Kenneth Jones, and Billy Allison. (Staff Photo.)

Hendersonville Challenges Canton At Canton Tonight

Canton High School's undefeated Black Bears meet Hendersonville tonight at the Canton stadium. Kickoff time for the Blue Ridge Conference headliner is 7:30 P. M. The Bearcats, though walloped by Waynesville (26-6) and smothered by Asheville (47-0), shape up as the roughest stumbling block in the Bears' way to their first Blue Ridge crown since 1947. A large delegation of Waynesville folks, including quite a few football people, will help pack the Bear stadium for the fracas. The Mountaineers won't be in action until Friday night. They will be at home for Brevard, in another Conference game. A Hendersonville victory, regarded as improbable, but not impossible. (See Bearcats—Page 8)

Riggins Leads Men's Bowling

Julius Riggins still leads the individual scorers in the Waynesville Men's Bowling League. The standings:

Name	Hdp.	G.	Avg.
1—Riggins	12	14	163.2
2—Pressley	13	12	162.6
3—Medford	16	14	158.5
4—Gribble	18	13	156.18
5—Yount	18	18	155.9
6—Cochran	18	18	155.3
7—Dudley	12	19	154.8
8—Rose	13	20	153.15
9—Francis	14	21	151.2
10—Hamlett	15	22	150.15

Plans Made For 1950-51 Community Cage Season

County community leaders and recreation officials Monday night drew up plans for the 1950-51 basketball season. Approximately 200 people, including principals of the county's high schools and local Community Development Program officials, attended the session at the Court House here. A committee for the 1950-51 season was selected: Jack Justice of Canton, chairman; George Rogers of Upper Crabtree; Joe Turner, Fines Creek; Bob Williams, White Oak; Lester Stockton, Cruso; and Martin Rogers, Stoney Cove. The eligibility rules adopted aimed, fundamentally, to encourage the participation of people who normally do not have much opportunity to take part in athletics. At the same time, the rules were set up to protect high school basketball coaches from losing varsity players to the community teams. The rules: 1) Limit membership of a community team to permanent residents of that community; 2) Prohibit varsity high school players and members of Class A and B independent teams from playing for a community team; this rule applies to both boys and girls; no player who has been issued a varsity uniform by his or her high school team may compete on a community team. The rule on independents does

Bethel, Clyde To Play Friday Afternoon In Opening Of Neighborhood Series

SATURDAY'S GAMES

GAMES OF OCT. 28 By FRANK ECK AP Newsfeatures Sports Editor EAST

ARMY to trounce COLUMBIA (Cadets everything. Lions Little). BOSTON U. to take SYRACUSE (Not much to choose from here). COLGATE to edge BROWN (A likely high scoring game). CONNECTICUT over NYU (Violet in for a surprise). LAFAYETTE to beat BUCKNELL (It could go either way). CORNELL to trim PRINCETON (It was too close last year). DARTMOUTH to halt HARVARD (The Green will roll here). SAN FRANCISCO to nip FORDHAM (Figures to be a good game). VILLANOVA to edge GEORGETOWN (Wildcats in close battle). HOLY CROSS to beat YALE (Crusaders pack power). PENN to sink NAVY (Middies just haven't got it). PENN STATE to crush TEMPLE (They're not in the same league). PITT to take MIAMI (Look at that Panther schedule). RUTGERS over LEHIGH (It was 40-27 last time). VIRGINIA to halt WEST VIRGINIA (A stout defensive battle).

MIDWEST ILLINOIS over INDIANA (A Big Ten game worth watching). *MARQUETTE over SANTA CLARA (It could go either way). MICHIGAN to crush MINNESOTA (Wolverines much stronger). KANSAS to take NEBRASKA (Looking to avenge 27-13 loss). NORTHWESTERN over WISCONSIN (It should be a tight one). NOTRE DAME to rout MICHIGAN STATE (Irish still mad at Purdue). OHIO STATE over IOWA (The Buckeyes have this one). OKLAHOMA to crush IOWA STATE (The Sooners very handy). MISSOURI to stop OKLAHOMA A&M (Aegies have stout defense). PURDUE to turn back UCLA (The team that beat Notre Dame). *TULSA to rout BRADLEY (First met in '49—Tulsa won 55-6). *Night game.

SOUTH ALABAMA over MISSISSIPPI ST. (Will be 7 straight over Maroons). TULANE to beat AUBURN (A Green Day habit since 1946). CLEMSON to take WAKE FOREST (A southern power this fall). MARYLAND over DUKE (Duke won six previous meetings). FLORIDA to crush FURMAN (Furman last beat Gators in 1930). KENTUCKY to top GEORGIA TECH (Wildcats great this year). TCU over MISSISSIPPI (Horned Frogs over Rebels again). NORTH CAROLINA over WM and MARY (Tar Heels are due). *NORTH CAROLINA STATE over VPI (State by a large score). TENNESSEE to take WASHINGTON & LEE (First meeting since 1929). VMI to rout CATAWBA (The Keydets find a breather). *Night game.

SOUTHWEST VANDERBILT to edge ARKANSAS (Out to avenge 7-6 loss in '49). TEXAS AGGIES to beat BAYLOR (Stifeler has strength now). TEXAS to turn back RICE (Longhorns have Townsend). TEXAS TECH to halt TEXAS WESTERN (Figures as close game). FAR WEST CALIFORNIA to trim ST. MARY'S (Bears hold 32-8 series edge). COLORADO AGGIES over UTAH STATE (Colorado has 22-11 edge). COLORADO U. to beat UTAH (Did it by 14-7 last year). *DENVER to take ARIZONA (Seeks first win in second meeting). OREGON STATE to rout MONTANA (Beavers won by 63-14 last fall). SOUTHERN CAL. to halt OREGON (Easiest rival thus far). STANFORD to halt WASHINGTON (Indians must stop Heinrich). WASHINGTON STATE to rout IDAHO (It was 35-13 last time). WYOMING to beat NEW MEXICO (Cowboys have 4-2 series edge). *Night game. RECORD: 98 Right, 41 Wrong, 5 Ties. Pct. .705.

Vacancies Left In Organized Hunts In WNC

After all applications had been processed and drawings held, a number of vacancies still existed in some of the organized hunts to be held in the wildlife management areas of the western part of the state. Clyde P. Patton, Executive Director of the North Carolina Wildlife Resources Commission, announced today. Applications to fill these vacancies for the season. Pet Dairy's 914 was third best team game and its 2,598 was second best team series. Wilson Medford of Pet was runner-up both for individual high series and high game honors. His best game was a 199, and his series totalled 562. The standings:

	W	L
Pet Dairy	17	4
A. C. Lawrence	15	6
WBC	12	9
Twin Brook	8	13
Wellco	7	14
Dayton	4	17

Farm Bureau Gains In Bowling Race

Fourth-place Farm Bureau Mutual gained ground this week in the Waynesville Women's Bowling League race. Farm Bureau turned back A. C. Lawrence, 3-0, while third-place Wellco Motor Monday night, 3-0. Howell Motor maintained its league leading use by stopping Davton Rubber, 3-0. Howell Motor turned in the highest scores for both team and individual high games and series. The best team game was 706, and the best team series, 2,076. Mrs. Mohela Medford of Howell won honors for both individual high game and individual high series. She rolled a best game of 187, and a high series of 456. Wellco No. 1 turned in a 700 game for second place in that department, and the second-best series of 1,971. Dorothy Phillips of Wellco No. 2, with a 152, was runner-up for high individual game honors. Beulah Timbes of Farm Bureau (See Farm Bureau—Page 8)



Buy Ray's Special Fall Values

— Many Items Specially Priced This Week — We List Below Only a Few of the Many Offered

Beautiful New Cotton Plaid Blankets

\$1.89 VALUE — SINGLE	\$1.66
\$1.98 VALUE — SINGLE	\$1.77
\$2.98 VALUE — DOUBLE	\$2.66

Being shown this week for first time

Cannon Muslin Sheets

72 x 108 Second — SPECIAL	\$2.29
81 x 108 Second — SPECIAL	\$2.39
72 x 108 1st Quality	\$2.69

COMPARE OUR PRICES WITH OTHERS

49c CANNON TOWEL	39c
Women's Outing Gowns	\$1.77
\$2.95 VALUES	\$2.66

Women's Outing Pajamas

\$2.98 VALUES	\$2.66
---------------	--------

MEN'S DEPARTMENT

\$5.50 CORDUROY PANTS	\$4.99
\$4.69 Blanket Lined COATS	\$4.22
\$1.19 Chambray Work SHIRTS	\$1.00

Men's 49c Part Wool GRAY WINTER SOX — 43c

Children's Department

Corduroy Overalls Size 2 to 8 Group

\$2.95 Special This Week	\$2.48
--------------------------	--------

In blue — brown — maroon A VERY SPECIAL VALUE Heavy Grade — 1st Quality And—You should see other groups

\$2.59 DIAPERS — \$2.29

1st Quality Birds-Eye — 27 x 27

49c RECEIVING BLANKET — 39c

1 to 6 — Elastic Waist

\$1.49 Blue Denim Overall — \$1.35

BOYS' BLUE DENIM DUNGAREES

Sizes 6 to 16

\$1.95 Values — \$1.69

Offered For Week-End Only

\$2.39 Anvil laceback \$2.19

BOYS' 8-oz. OVERALLS

Sizes 8-10-12

\$1.95 VALUE — SPECIAL — \$1.79

— BOYS' DEPT. — 2nd FLOOR —

6 to 16 Boys' Flannel Pajamas — \$1.98

BOYS' UNION SUITS

— Now Ready In Several Types and Sizes —

You Will Find Our Prices Right.

IT'S EASY TO PARK EASY TO SHOP AT RAY'S Dept. Store and Super Market

New Marks Set In Men's Bowling Race

Third-place Waynesville Bowling Club narrowed the gap to the group spot in the Waynesville Bowling League Tuesday night. BC turned back second-place Lawrence, 3-0. Dayton Dairy, the league leader, over, continued on its way with a 7-0 victory over fifth-place Wellco.

Howe'en Carnival For Crabtree

The Crabtree-Iron Duff School PTA and PTA will sponsor a Howe'en Carnival for the children Tuesday night. The party will open at 7:30 p. m. at the school. Mrs. Phillip Chase is serving as general chairman in charge of making the arrangements. PTA leaders and faculty members are working with her. Every class in the school, from first grade to high school senior, will sponsor a different phase of the carnival. All the proceeds will go to help finance the formation of the proposed school band.