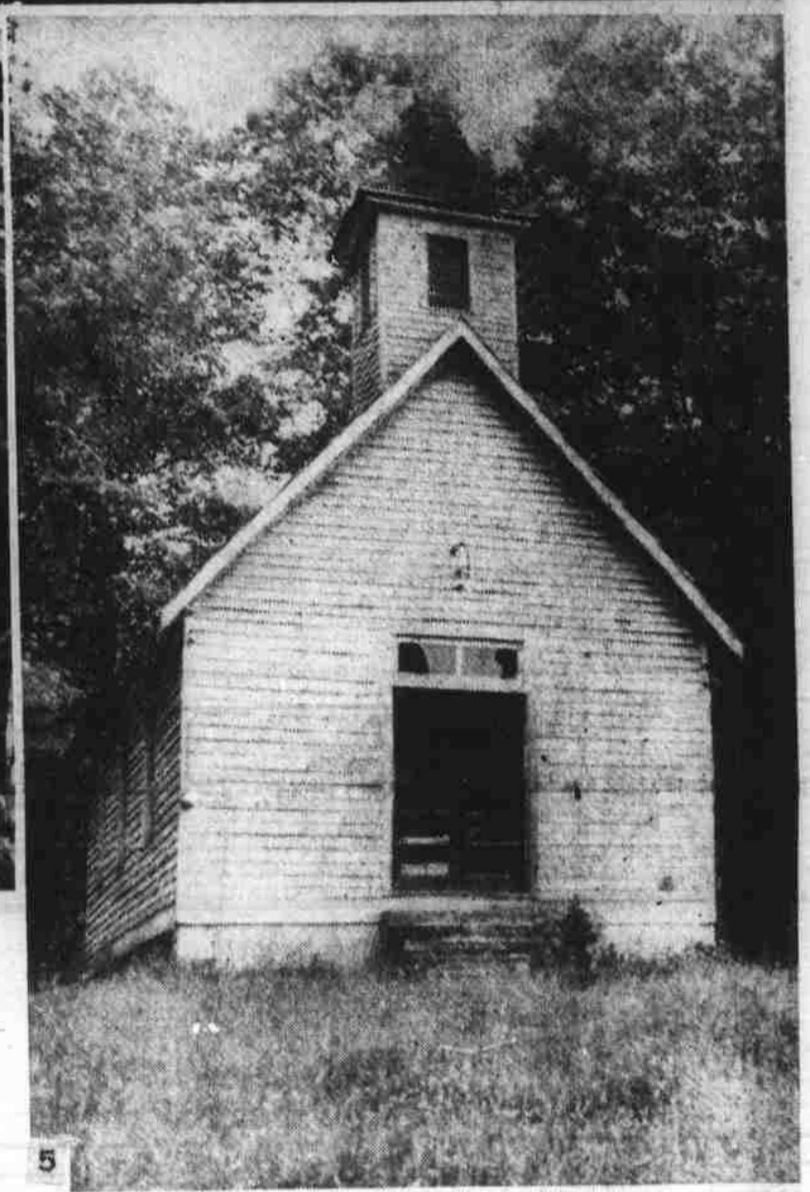
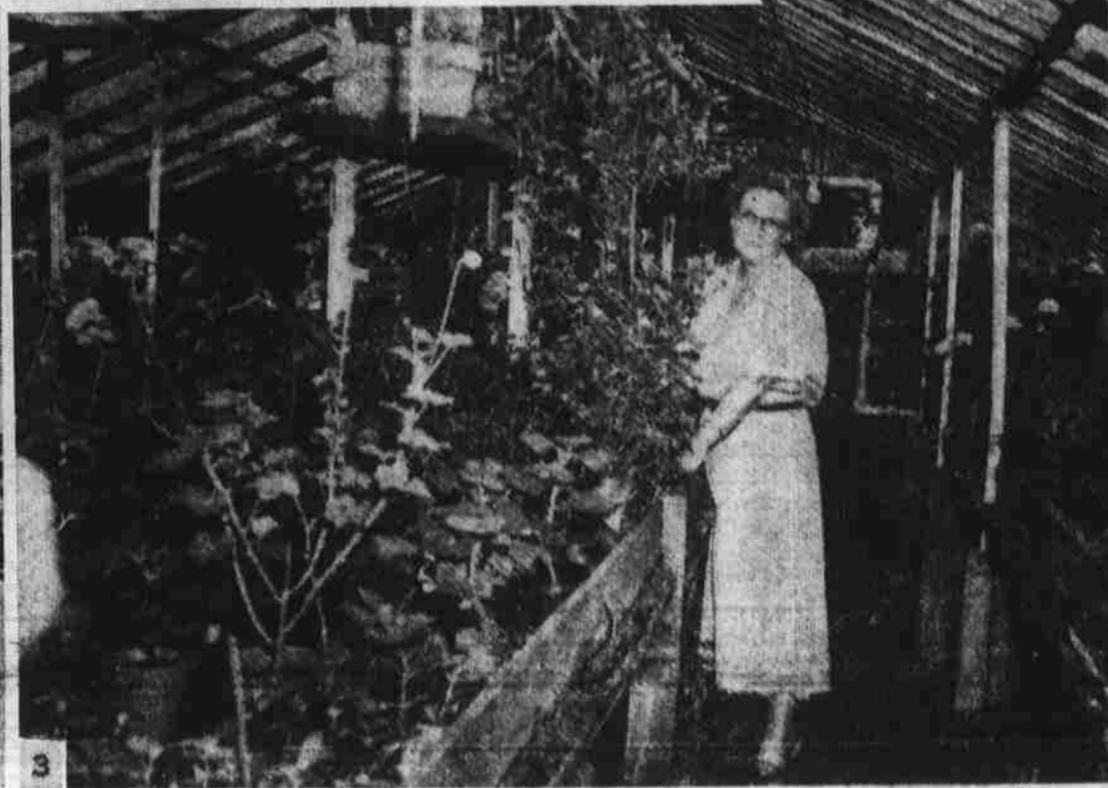
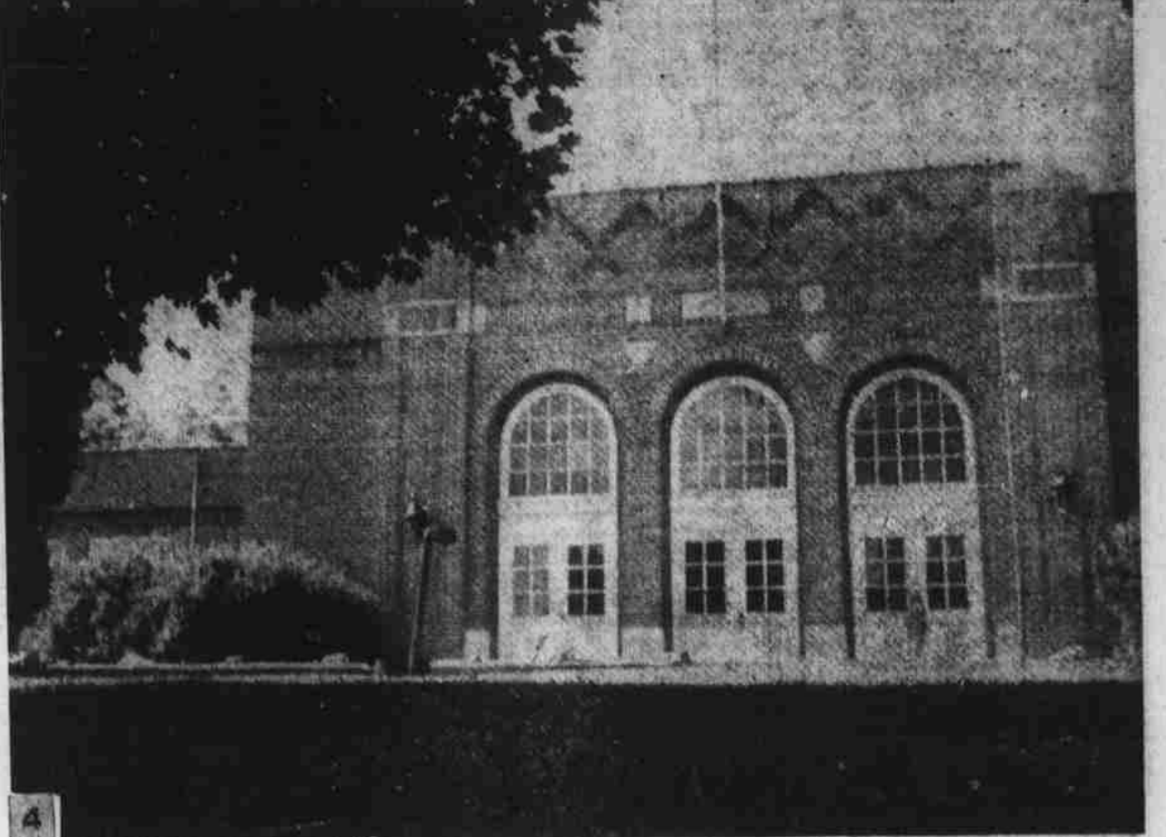
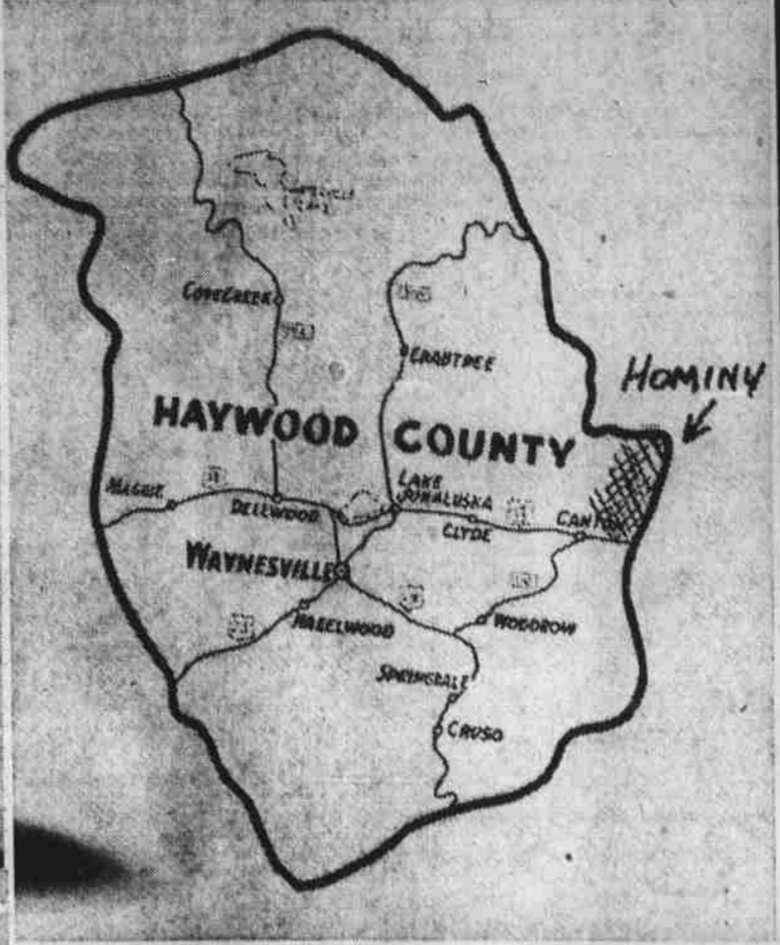


The Sixteenth Of A Series of Farm-Home Pictorial Pages



The dual community signs at the entrance of Hominy and Beaverdam. The signs are at the forks of the highway. The attractive home of Mr. and Mrs. Monroe Silvers, Newfound highway.

No. 3—Mrs. Frank Cogburn in her hot house, where she grows all kinds of flowers and plants.

No. 5—The Community House of Hominy, where the community meetings are held.

Diversified Income Is Playing Important Role in Hominy Community

The sixteenth community in today's series deals with the Hominy Community—active, and thickly settled with many of the citizens of the county. The citizens of the Hominy community have for many months got their first

visit to Hominy—it is partly along the Newfound road, which has served as a detour to Asheville while the main road was being paved. It is up and down this valley, together with the many roads that lead off the Newfound highway, that 275 families, making up a total population of 1,100 people live happily, progressively and play an important part in Haywood's community life.

Some idea of the vast area covered by Hominy can be had from the fact that there are 24 miles of roads in the community, but only 5 miles are paved—this paving in the Newfound road. The remaining 19 miles are the spur roads, and it is on these that the majority of the people of the area live. Hominy was also one of the few communities that failed to get any paving during the past year. Of course the general repairs to the broken paving on the Newfound road was not counted as new paving.

Mr. Higgs is assisted by W. W. Trantham, vice chairman, Mrs. Edna Broyles, secretary, Hazel Holland, treasurer, and Mrs. Lloyd R. Jones, reporter. The group meets monthly in a building in the center of the community. Two churches serve the community—the Rocky Face Baptist, with a membership of 125, and a Sunday School enrollment of 120. Rev. I. W. Scott is pastor. The congregation of the Plains Methodist church, with Rev. George B. Culbreth pastor, has a membership of 300, and a Sunday School enrollment of 150. This church recently moved into a new building, which was built for the most part by members of the congregation. The old church which had served for many years has been recently dismantled and moved away. The community goes in for a

varied recreational program, featuring softball and basketball. Some outstanding teams have been entered in county competition from the community. **BURLEY** There are about 30 acres of burley allocated to the farms of Hominy, which means an income upward towards \$30,000 from this one crop. The average yield for the area is estimated at 1800 pounds per acre, with a price of 51 cents per pound. Among the leaders in growing burley include Fred Mann, averaging 58 cents per pound, and an acre yield of 1900 pounds. D. M. Clark averaged 56 cents for the 1700 pounds per acre from his farm, while Guy Worley averaged 55 cents per pound, and had a new yield of 1700 pounds per acre. **DAIRYING** Almost every farm has a cow, but there is only one commercial dairy in the community—Silver's Dairy. They milk an average of 40 cows, and retail the milk mostly in the Canton area. **POULTRY** The area is showing increased interest in poultry, and already several large flocks are in a high production state, with hatching eggs being the major feature. Edgar Clark has the largest flock, with 400 New Hampshire Reds, with D. M. Clark only 100 less. Mark Swain has a flock of 75 for a starter. Those already in the poultry business are showing a profitable income from their venture, and other citizens in the community are interested in starting on a similar basis soon. **FRUITS** The section does not have any large commercial orchards, yet there are about 2,000 bearing apple trees throughout Hominy, with a good average yield, as compared with the remainder of the county.

The main varieties grown include the Stark, York, and Wolf River. The berries grown in the area are mostly for home consumption and little for commercial purposes. D. M. Clark has 250 trees, while G. H. Higgs has 200. Lloyd R. Jones also has 200 trees. **BEEF CATTLE** Beef cattle represents a sizeable income in the community, having an estimated value of \$14,000. There are 600 head of beef cattle in the Hominy area, with about 1,000 acres devoted to pasture lands. The Hereford is the leading type animal, with several pure-bred herds. Fred Mann has 150 head, and grazes them on 300 acres of choice pasture land. Goble McCracken has about 30 head, and devotes 65 acres of pasture to them. G. H. Higgs has 40 head, and his pastures consist of 100 acres of fine land. The citizens of Hominy have so arranged their livelihood, that their income is steady the year round, and they put into practice the value of living-at-home, in that they grow most of their food supplies, and this, in addition to their cash crops, supplements their steady and high industrial pay. With such a sound financial foundation, the citizens of Hominy are of course progressive, own their homes and farms, and are enjoying the better things of life.

of the University of California advise exercise to get them back in shape. One exercise they say can be done while reading the evening paper. With legs stretched out on a footstool, stretch and separate the toes as if you were grabbing with them. The instructors also suggest walking forward with toes pointed inward, "pigeon toed," as far as possible to strengthen foot muscles. The exercises also reduce fatigue, according to the body-builders.

For CLEAN, EFFICIENT, PROGRESSIVE TOWN ADMINISTRATION

VOTE FOR **LEE**

CANDIDATE FOR **MAYOR**

TOWN OF WAYNESVILLE

BREED YOUR COWS THIS EASIER WAY!

When you have a cow to be bred phone us for Proved Sire Service. It's fast, economical, convenient, safe.

Haywood Cooperative Breeding Ass'n.
Call 938 by 11 a. m. for same day service

ABS AMERICAN BREEDERS SERVICE

PROTECTION!

Good Looks, Too!

It's a wise home-owner who keeps his house in perfect condition with high-quality paints. They're a sure guarantee against rapid deterioration - - - a sure promise of increased attractiveness. Choose from our wide selection of paints today!

Haywood Builders Supply Co.

"Where There's A Material Difference"

Phone 82 At The Depot

Prescription For Saggng Arches

LOS ANGELES—(AP)—If your feet are giving out on you under strain of constant daily wear, members of the physical education staff

REA ELECTRICITY HAS CONTRIBUTED GREATLY TO THE DEVELOPMENT OF HAYWOOD'S RURAL COMMUNITIES **REA**

HAYWOOD ELECTRIC MEMBERSHIP CORPORATION

WAYNESVILLE, N. C.