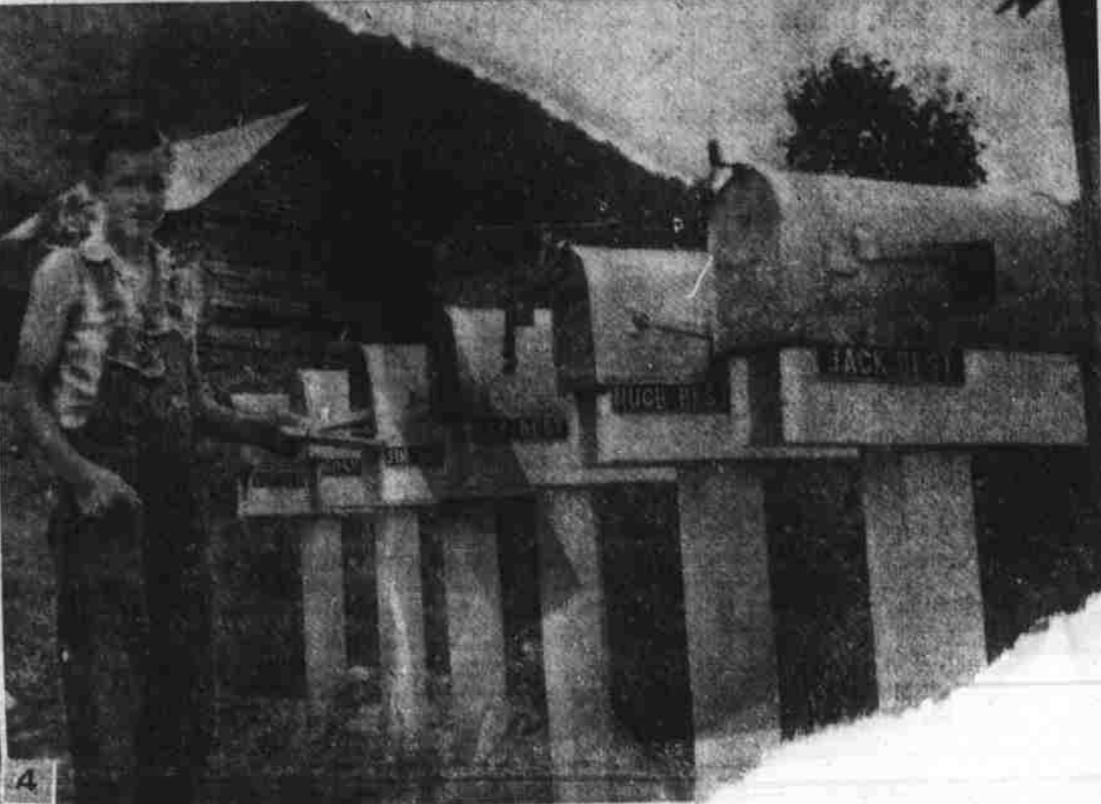
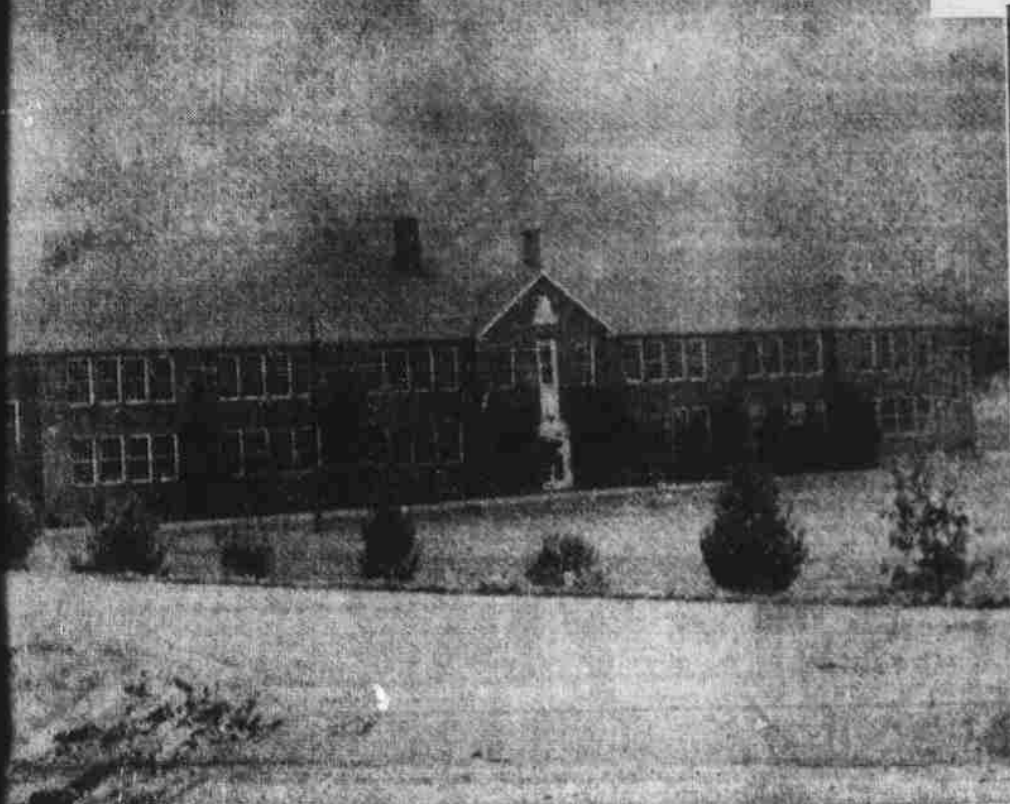
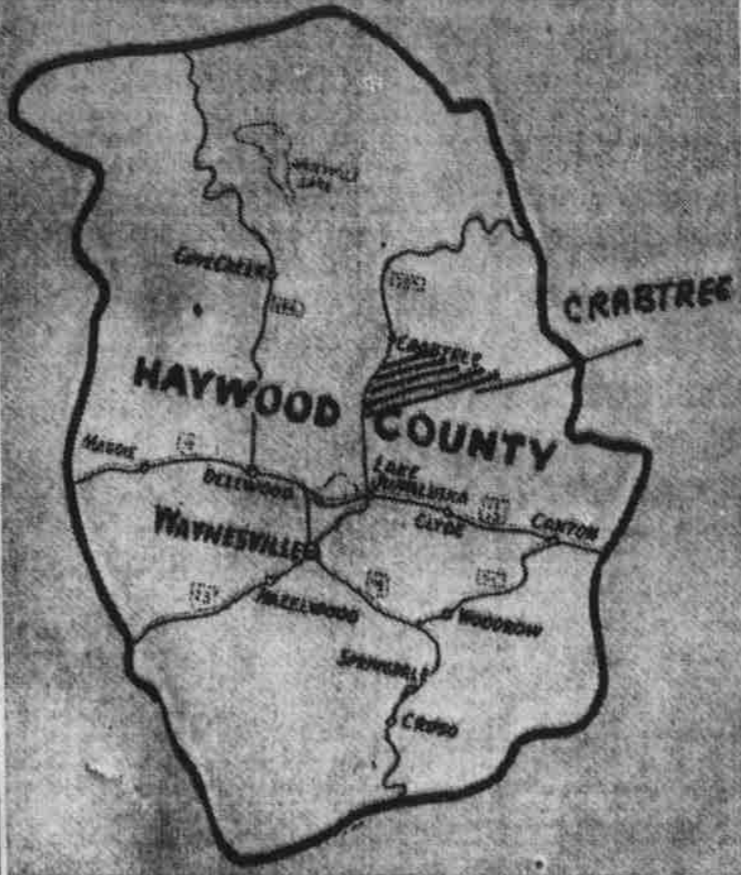


## The Seventeenth Of A Series of Farm-Home Pictorial Pages



Some of the officers of the Upper Crabtree Community Development Program. Left to right—J. B. James, chairman, Mrs. Ford, vice-chairman, and C. M. Rogers, treasurer.

No. 4—The mail boxes in Upper Crabtree have nameplates, such as this group of six boxes. This is Billy Best looking on.

No. 5—The windmill on the Jack Rogers Farm. This windmill furnishes the power that operates the home. Failures are almost nonexistent. The mill was turning like a top when we got the picture.

### Profitable Farms Up Upper Crabtree Section Of This County

The seventeenth community page is in the prosperous Upper Crabtree, so named because of the drainage creek that flows through the rich farm lands of this section.

#### PROTECTION!

Good Looks,  
Tool

It's a wise home-owner who keeps his house in perfect condition with high-quality paints. They're a sure guard against rapid deterioration - - - a sure promise of increased attractiveness. Choose from our wide selection of paints today!

Haywood  
Builders Supply Co.

"Where There's A Material Difference"  
At The Depot

The community has 88 families, with a population of 352. This fact, together with the large area covered by the community, shows that the farms of Upper Crabtree are much larger than the average in many sections of Haywood. Most of the people are solely dependent upon their farms, as few do industrial work.

Upper Crabtree for many years has been the center of sheep raising in Haywood, and today there are perhaps more sheep in Upper Crabtree than all the remainder of the county combined. There are about 1100 head in the community, and they bring annual income of about \$5,000.

Some of the best sheep men in Western North Carolina live in Upper Crabtree, and the matter of raising outstanding sheep has been handed down through the years from father to son.

The pasture lands on the mountain slopes of the area are especially suitable to raising sheep, and many of the animals have taken state and county fair grand prizes time and time again.

Upper Crabtree citizens are proving the value of the community development program. They meet twice monthly, on the first and third Saturdays at the Mt. Zion church. J. B. James is chairman, with Mrs. Frank Medford vice-chairman, Peggy Bradshaw reporter, and secretary, and C. M. Rogers is the treasurer. The usual meeting time is eight o'clock.

The students of Upper Crabtree attend the Crabtree-Iron Duff school, and play important roles in the student body of that large and progressive school. The school has 12 grades, with 386 students, with 14 teachers. Five buses serve the area for transporting the students to the school.

Within the past few weeks the area has had a major road project completed, a new bridge over the

creek just as the road turns off Highway No. 209. During the construction the citizens had to take a narrow detour around the bridge. During 1950, 2.2 miles of paving was done in the community under the rural road program. There are about 15 miles of roads that remain unpaved.

The entire area enjoys the services of REA and the number of electrical appliances and the use of citizens make of the electricity proves the important part it is playing in their everyday lives.

Most of the area has the facilities of telephones.

There are three churches in Upper Crabtree.

The Rock Springs Baptist church is the largest, with a membership of 123, with Rev. E. P. Carter as pastor. There are 93 enrolled in the Sunday school of the church.

The second largest is also Baptist, the James Chapel, with a membership of 70, and a Sunday school enrollment of 53. The Rev. Robert Harris is pastor.

The Mt. Zion church, the large brick church on the left, seen soon after entering the community, is the Methodist church with a membership of 55, and a Sunday School enrollment of 35.

The people of Upper Crabtree have always taken a keen interest in their church, and that is manifest today, as one looks at the well kept buildings.

**BURLEY**  
Upper Crabtree is a high producer of burley tobacco, with an allotment of 120 acres, having a yield of 1,926 pounds per acre. Some of the first burley ever grown in this section was produced in Upper Crabtree.

Claude McCracken last year produced 3,217 pounds for which he averaged 56 cents, while Hugh Best was close behind with 2,100 pounds averaging 55 cents. Ray Best produced 1,900 pounds, and

averaged 53 cents. The burley growers take an interest in their crop, and follow through with careful grading. A conservative estimate is that the 1950 crop was worth \$114,000, the growers of Upper Crabtree.

**DAIRYING**  
There are three grade A dairies in the community, with about 1,000 acres devoted to the pasture for the herds. There are 25 silos used for feeding the herds, and the Guernsey predominates all other breeds.

Among the dairymen are M. Reeves, A. W. Ferguson, and Beauford Ferguson.

**RECREATION**  
When it comes to recreation, the Upper Crabtree teams have to be taken into consideration because they have winning tear year-in and year-out. This is especially true of basketball, and they fail to take a basketball tournament, they are usually the runners-up.

One of the largest poultry flocks in the county is that of Jack Rogers. He has 3500 New Hampshire Reds. The flock is producing hatching eggs, and on a profitable basis. It is on the Rogers farm that one of the few, if not the only windmill in the County operates. Very few times has the windmill failed to keep the water supply adequate for the needs of the Rogers family.

There are no commercial orchards in Upper Crabtree, but some 2000 apple trees produce more than what is needed for home use. There are about 18 families with nice berry patches, and all 88 of the families in the community cultivate a profitable family garden.

**BEEF CATTLE**  
Crabtree is one of the leading beef cattle areas of Haywood, and right now there are about 2200 head grazing on some 8,000 acres of pasture land. The leading breed

**AREA**

ELECTRICITY HAS CONTRIBUTED GREAT DEVELOPMENT OF HAYWOOD'S RURAL

**HAYWOOD ELECTRIC MEMBERSHIP**

WAYNESVILLE, N. C.