

Dates Are Set... The 10th Atlantic Tuna Tournament will be held at New London, Conn., Dec. 27, 28, 29, 30, 31, 1951. The tournament will be held at the waters off Connecticut Island in Block Island Sound...

Sound will be fished for the glut tuna as was the case the last two years when headquarters were at Fishangri-La, Montauk.

try to the highest bidder for cash the following described lands and premises, situate, lying and being in Waynesville Township, Haywood County, N. C. BEGINNING at the Westmost corner of Tract No. 13 in Block "B" of Rolling Meadows, plat of which is recorded in Map Book "E," page R-3, Haywood County Regis-

The Holy Family



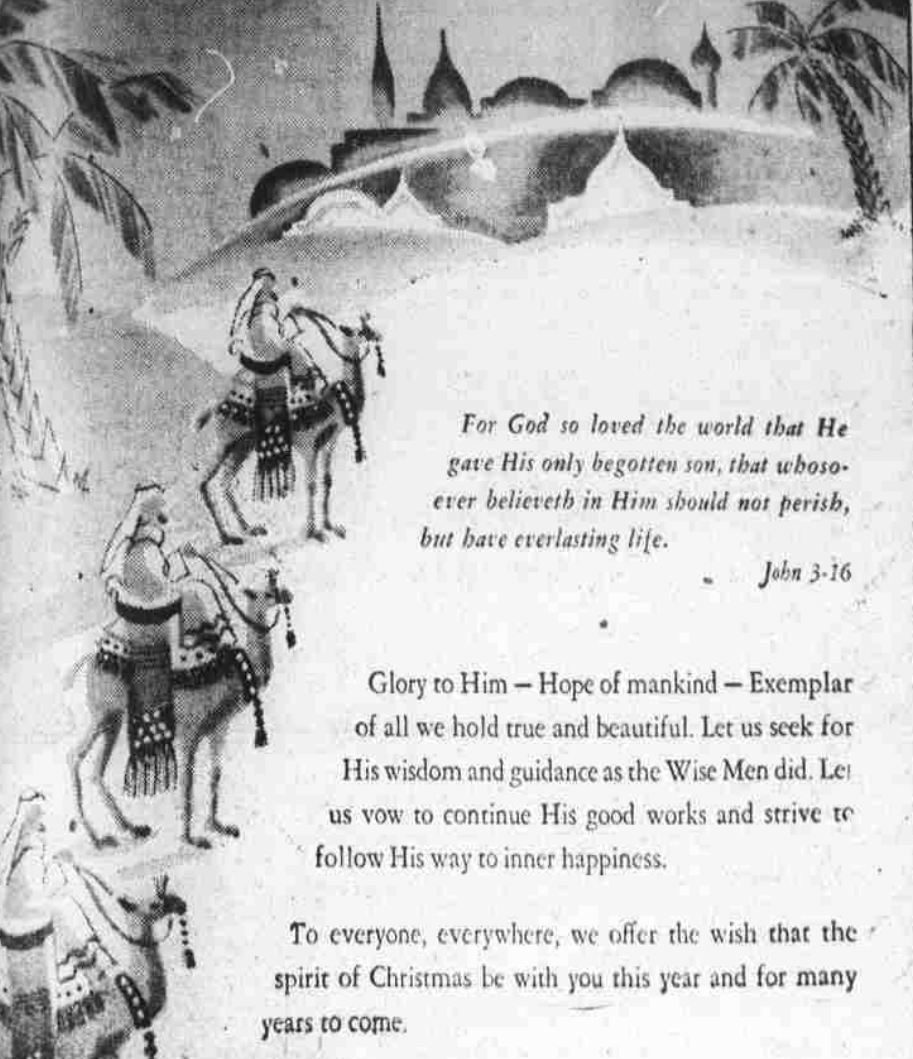
And so it was, that, while they were there, the days were accomplished that she should be delivered. And she brought forth her first born son, and wrapped him in swaddling clothes, and laid him in a manger, because there was no room for them in the inn. Luke 2, 6-7

or less, as per survey and plat of Wait Justice, E.L.S., made November, 1950. Sale made pursuant to the power and authority conferred upon the undersigned Trustee by that Deed of Trust dated December 8, 1950,

executed by W. A. Smathers, and recorded in Book of Deeds of Trust 77, page 211, Haywood County Registry, to which instrument and record reference is hereby made for all the terms and conditions thereof, default having been made

in the payment of the purchase money indebtedness thereby secured, sale made subject to unpaid taxes, if any. This December 7, 1951. A. T. WARD, Trustee 2150-D 13-90-27-J 3

Peace on Earth...



For God so loved the world that He gave His only begotten son, that whosoever believeth in Him should not perish, but have everlasting life. John 3-16

Glory to Him — Hope of mankind — Exemplar of all we hold true and beautiful. Let us seek for His wisdom and guidance as the Wise Men did. Let us vow to continue His good works and strive to follow His way to inner happiness.

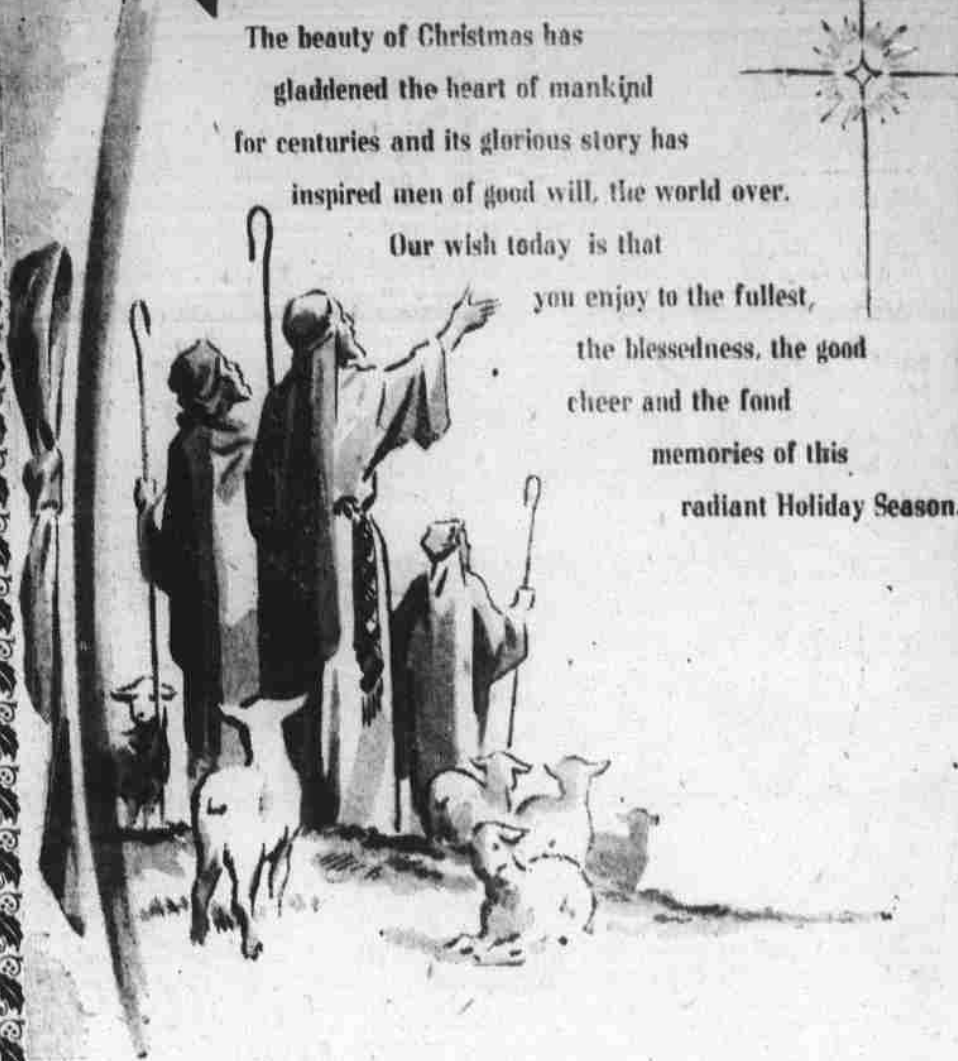
To everyone, everywhere, we offer the wish that the spirit of Christmas be with you this year and for many years to come.

Belk-Hudson

Home of Better Values

try, said beginning corner also identified as M. O. Galloway's corner and bears N. 79° 25' E. 16 feet from a black oak and is on top of ridge, and runs with watershed of ridge as follows: N. 3° 57' W. 7.2 poles; N. 43° 10' W. 10.2 poles; N. 53° 29' W. 7.14 poles; N. 43° 12' W. 6.44 poles; N. 65° 32' W. 5.46 poles; N. 76° W. 7 poles; N. 80° 36' W. 4.28 poles; N. 39° 31' W. 6.72 poles; N. 37° 40' W. 14.72 poles; N. 28° W. 6 poles; N. 1° 35' W. 6.4 poles; N. 51° W. 10.1 poles; N. 42° 28' W. 4.2 poles; N. 8° 40' W. 8.94 poles; N. 13° 40' W. 6.68 poles; N. 30° 32' W. 6.68 poles; N. 23° 10' W. 6.16 poles; N. 14° 15' W. 5.48 poles; N. 2° 50' E. 4.48 poles; N. 29° 30' W. 4.14 poles; N. 67° 28' W. 4.12 poles; N. 77° 25' W. 5.68 poles; N. 54° 32' W. 6.6 poles; N. 53° 50' W. 5.68 poles; N. 48° W. 4.24 poles; N. 32° W. 3.84 poles; N. 62° 20' W. 8.98 poles; N. 37° 30' W. 6.6 poles; N. 37° 50' W. 9.88 poles; N. 9° 04' W. 8.64 poles; N. 13° 04' W. 9.48 poles; N. 40° 01' W. 11.84 poles; N. 49° 03' W. 5.26 poles; N. 24° W. 7.48 poles; N. 19° 15' W. 3.58 poles; N. 4° 30' E. 5.86 poles; N. 12° 35' W. 5.3 poles; N. 10° 32' E. 6.8 poles; N. 22° 25' W. 10.6 poles; N. 47° 30' W. 10.04 poles; N. 5° 27' W. 7.76 poles; N. 9° 15' W. 7.72 poles; N. 2° 46' W. 10 poles; N. 15° W. 10.2 poles; N. 16° 07' W. 11 poles; N. 19° 56' W. 7.4 poles; N. 2° 59' E. 5.68 poles; N. 6° 32' E. 9.6 poles; N. 21° 32' E. 6.56 poles; N. 36° 30' E. 7 poles; N. 17° E. 8.36 poles; N. 00° 29' W. 7.32 poles; N. 3° 58' W. 7.32 poles; N. 12° 14' E. 11.88 poles; N. 9° 10' E. 10.1 poles; N. 00° 02' E. 9.16 poles; N. 29° 04' E. 4.85 poles; N. 3° 29' E. 9.5 poles; N. 4° 58' E. 6.6 poles; N. 7° W. 9.84 poles; N. 8° W. 6.52 poles; N. 2° 30' E. 8.56 poles; N. 5° 20' E. 5.84 poles; N. 3° 28' E. 4.9 poles; N. 2° 05' E. 6.04 poles; N. 8° 05' W. 4.76 poles; N. 6° 30' W. 6.04 poles; N. 4° 59' W. 4.44 poles; N. 00° 10' E. 5.52 poles; N. 9° 29' E. 3.8 poles; N. 7° 33' E. 5.48 poles; N. 18° E. 3.72 poles to a stake in mound of stone on top of mountain (bearing tree; mountain oak S. 82° 15' E. 23 links; thence with Balsam Ridge N. 87° 58' E. 2.96 poles; N. 71° 28' E. 5 poles; N. 64° 30' E. 4.36 poles; N. 71° E. 4.68 poles; S. 87° 03' E. 2 poles; N. 65° E. 5.2 poles; N. 69° 25' E. 5.8 poles; N. 68° 04' E. 5.08 poles; N. 65° 34' E. 5.28 poles; N. 71° 30' E. 4.44 poles; S. 88° 35' E. 5.6 poles; S. 69° 57' E. 6.6 poles; S. 57° 30' E. 7.36 poles; S. 71° 50' E. 6 poles; S. 83° 29' E. 14 poles; N. 89° 03' E. 8.6 poles; N. 69° 30' E. 7.12 poles; N. 55° 35' E. 4.96 poles; N. 55° 15' E. 9.52 poles; N. 65° 25' E. 6.32 poles; S. 81° 57' E. 8 poles; N. 88° 27' E. 8.48 poles; N. 79° 30' E. 4.66 poles; N. 64° 55' E. 6.96 poles; N. 57° 20' E. 4.6 poles; S. 89° 50' E. 3.76 poles; S. 70° 58' E. 6.4 poles; S. 70° 20' E. 6.4 poles; S. 71° 35' E. 8.76 poles; S. 72° 26' E. 11.12 poles; S. 81° E. 6.76 poles; S. 85° 30' E. 10.6 poles; S. 89° 05' E. 7.6 poles; S. 76° 45' E. 7.4 poles; N. 85° E. 8.8 poles to a stake on top of Balsam Ridge; thence with Ridge S. 55° 30' E. 7.12 poles; S. 44° 28' E. 6.88 poles; S. 44° 57' E. 5.28 poles; S. 35° E. 6.08 poles; S. 35° 28' E. 6.6 poles; S. 37° 55' E. 10.44 poles; S. 44° 25' E. 9.96 poles; S. 44° 30' E. 20.6 poles; S. 59° 30' E. 2.8 poles; S. 61° 15' E. 8.2 poles; N. 66° 05' E. 5.92 poles; S. 55° 55' E. 6.04 poles; S. 51° 40' E. 7.88 poles; S. 49° E. 7.44 poles; S. 53° 55' E. 7.24 poles; S. 63° 05' E. 6.08 poles; S. 57° 20' E. 8.92 poles; S. 50° 45' E. 10.96 poles; S. 46° 58' E. 10.68 poles; S. 45° E. 6.72 poles; S. 44° 45' E. 6.24 poles; S. 57° 04' E. 5.2 poles; S. 57° 03' E. 7.88 poles; S. 62° 20' E. 8 poles; S. 50° 32'

Joy to the World...



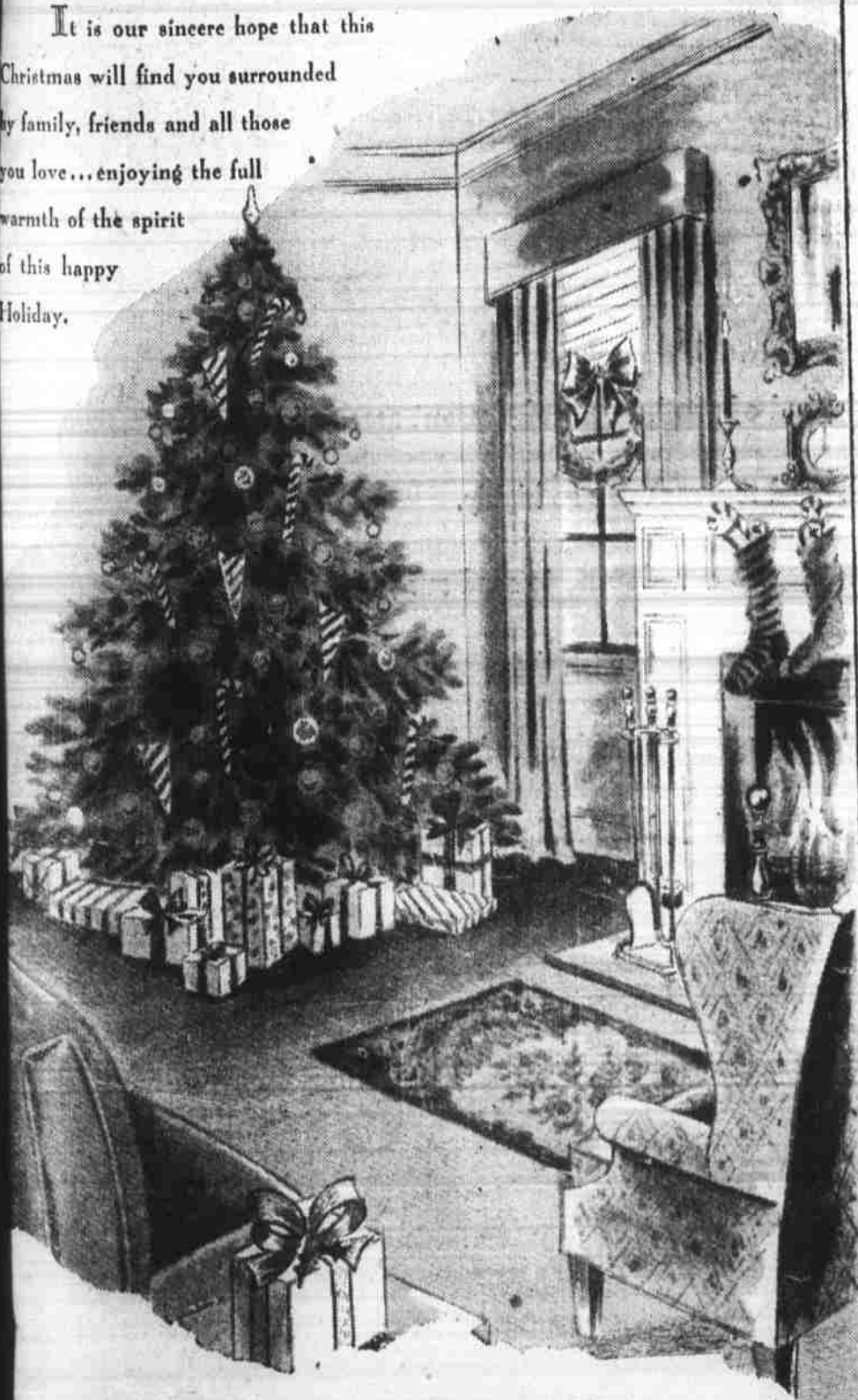
The beauty of Christmas has gladdened the heart of mankind for centuries and its glorious story has inspired men of good will, the world over. Our wish today is that you enjoy to the fullest, the blessedness, the good cheer and the fond memories of this radiant Holiday Season.

ROGERS ELECTRIC CO.

Your Electrical Dealer
Phone 461 Main Street

Christmas at home...

It is our sincere hope that this Christmas will find you surrounded by family, friends and all those you love...enjoying the full warmth of the spirit of this happy Holiday.



UNDERWOOD SUPPLY CO. Depot Street Phone 371



Best Wishes for Christmas

Christmas is here again and we're very glad. For we know that you and yours are looking forward to a merry time this year, enjoying all the pleasures of the holiday. And when our friends are happy we're happy too!

Merry Christmas and a Happy New Year

HOWELL MOTOR CO.

PLYMOUTH — DeSOTO — GMC
Phone 190 Haywood Street