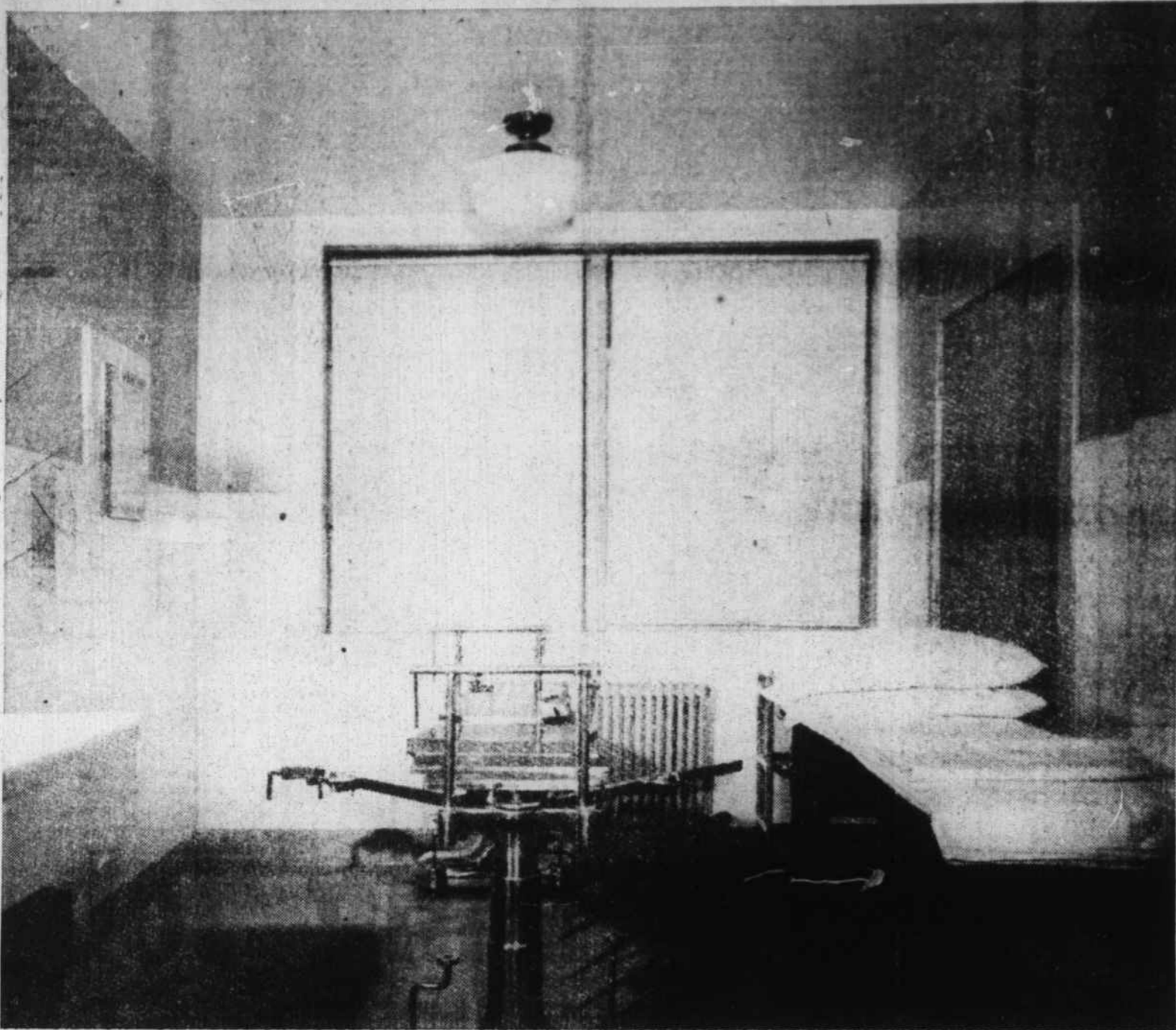


Orthopedic Surgery Possible With This Modern Equipment



The flexible operating table enables surgeons to perform operations on limbs that have to be maintained in certain positions. The table is portable and flexible. (Mountaineer Photo).

X-Ray Discovery Opened Many Fields Of Diagnoses

When Wilhelm Conrad Rontgen discovered the X-ray in 1895, one of the greatest aids in diagnosis rapidly became available to physicians throughout the world.

The rays, called x-rays by their discoverer because of their unknown nature, are now in every reputable hospital in the United States. An x-ray department equipped for diagnosis and treatment of disease is almost as necessary to a hospital today as a laboratory.

Also known as Rontgen rays, x-rays are produced by the passage of electric current through a special vacuum tube. They possess the property of being able to penetrate thick bodies that are impenetrable by light rays.

X-rays give an image on a fluorescent screen or photographic negative.

Three types of rays were found as parts of the x-ray. Alpha, beta and gamma rays were discovered

within five years of the initial discovery of the x-ray.

Rutherford found the alpha ray in 1899. Identified as helium atoms, these rays can be stopped by a sheet of paper.

The beta ray was discovered in the same year by Giesel. Known as electrons, the beta ray was found to be able to penetrate about half an inch of animal tissue.

The gamma ray was found to be the strongest of them all. Recognized by Villard in 1900, the ray can pass through a foot of lead.

Biological effect on body tissues by x-rays were noted by earlier investigators of the equipment. Chronic and painful skin ulcers on the hands and other exposed parts appeared on the early experimenters.

Many of the x-ray users died of recurring skin cancers before the harmful effects of the rays

were discovered. Today these harmful effects are guarded against by screens of lead or glass rich in lead content.

Some effects of x-rays on body tissues brought good along with the bad. Many satisfactory results were obtained by their use in treatment of diseases. Favorable results have been found in treatment of syphilis, lupus vulgaris, skin cancer and leukemia.

Immediately after discovery, x-ray came into use for the diagnosis of fractures and diseases of the bone. Many hospitals required the installation of equipment within a short time after x-ray's discovery.

Later it was found that soft parts of the body could be distinguished from denser organs or bones. This made way for the inclusion of internal organ examinations in the growing field of x-raying.

Examination of lungs opened still another large field in the study of the x-ray. Today x-rays are a routine part of many clinical examinations. They have detected thousands of symptomless cases of tuberculosis through the years.

Diagnosis of vertebral variations

has added the x-ray to methods of examination. Medical knowledge in the field has been greatly furthered by giving physicians something a little more tangible with which to work.

The field of dentistry increased the field of the x-ray still more. X-raying of the teeth began with the work of W. Koenig in Germany in 1896 and W. J. Morton's article in Dental Cosmos in the same year.

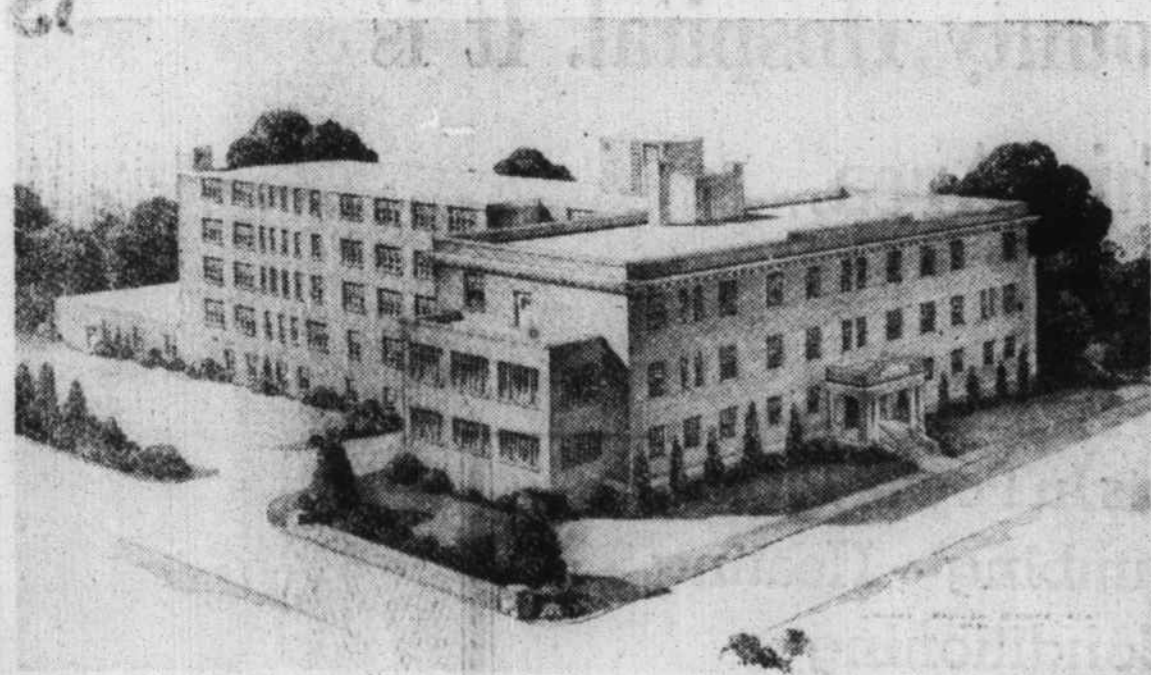
At first it was concerned only with the failure of teeth to erupt. The rays were utilized in other diagnoses shortly afterwards.

Obstetrical diagnosis employed x-rays as early as 1896, records show.

Applications of Rontgen's discovery in the last part of the 19th century were remarkable. Although the developments in the present century have been less spectacular, it has been very advantageous to the patient in diagnosis and treatment.

Improvements in x-rays have necessitated specialization in separate body fields. This caused by the discovery of more uses with improved machines.

Advances in the field have occurred so rapidly that it has sometimes been difficult to supply a sufficient, well-trained staff or to investigate the new improvements in a proper, scientific manner.



Best Wishes On Your Anniversary and Expansion Program

WE ARE HAPPY TO SUPPLY YOU WITH MUCH OF YOUR FOOD

WE SERVE INSTITUTIONS AND INDUSTRIES

Institution Wholesale Co.

312 Southside Avenue

Asheville, N. C.

Fear Of Cancer Causes Deaths

A Boston expert has blasted scare tactics often used to call attention to the danger from cancer.

Harping on the cancer death rate too frequently produces the opposite effect from that intended, said Dr. Samuel F. Marshall, surgeon at Boston's Lahey clinic.

Fear propaganda may make the victim think his case is hopeless and cause him to delay seeing a doctor until it really is too late, Dr. Marshall explained.

"Cancer is not so dreadful as people think," Dr. Marshall said. When the disease is diagnosed in the early stage, surgery (cutting out of the diseased part) can be carried out with very low risk and very hopeful outlook, even in aged people.

Dr. Marshall was moderator at a discussion on surgical lesions of the stomach during the South-eastern conference by the American College of Surgeons.

Ulcers and cancer are the two chief stomach lesions treated by surgery, he said. Treatment of stomach cancer was emphasized, since this is the form of cancer most deadly to men.

One-Man Riot

FOLSOM PRISON, Calif. (AP) —Nineteen convicts recently were disciplined for breaking up wash bowls and setting their bedding a-fire. One prisoner refused to join the riot and, as a reward, was moved to a quieter cell.

He promptly smashed his toilet bowl and fired his bedding. Warden Robert A. Heinze said he did not know why.

Entrance To The Hospital



This is the familiar entrance, which has been used for the entire 25 years the institution has been built. No changes were made during the modernization program to the entrance, except for a repainting job. (Mountaineer Photo).

6,000 Hospitals In United States

Hospitals throughout the — there are more than 6,000 of them—represent a book worth \$6,500,000,000.

Hospital facilities were at this extent last year.

About three million babies born in hospitals. Three every four babies born in the United States were born in hospitals.

Nearly 45 1/2 million patients treated in out-patient departments.

Each patient stayed in the hospital an average of 8 1/2 days 13 or more days.

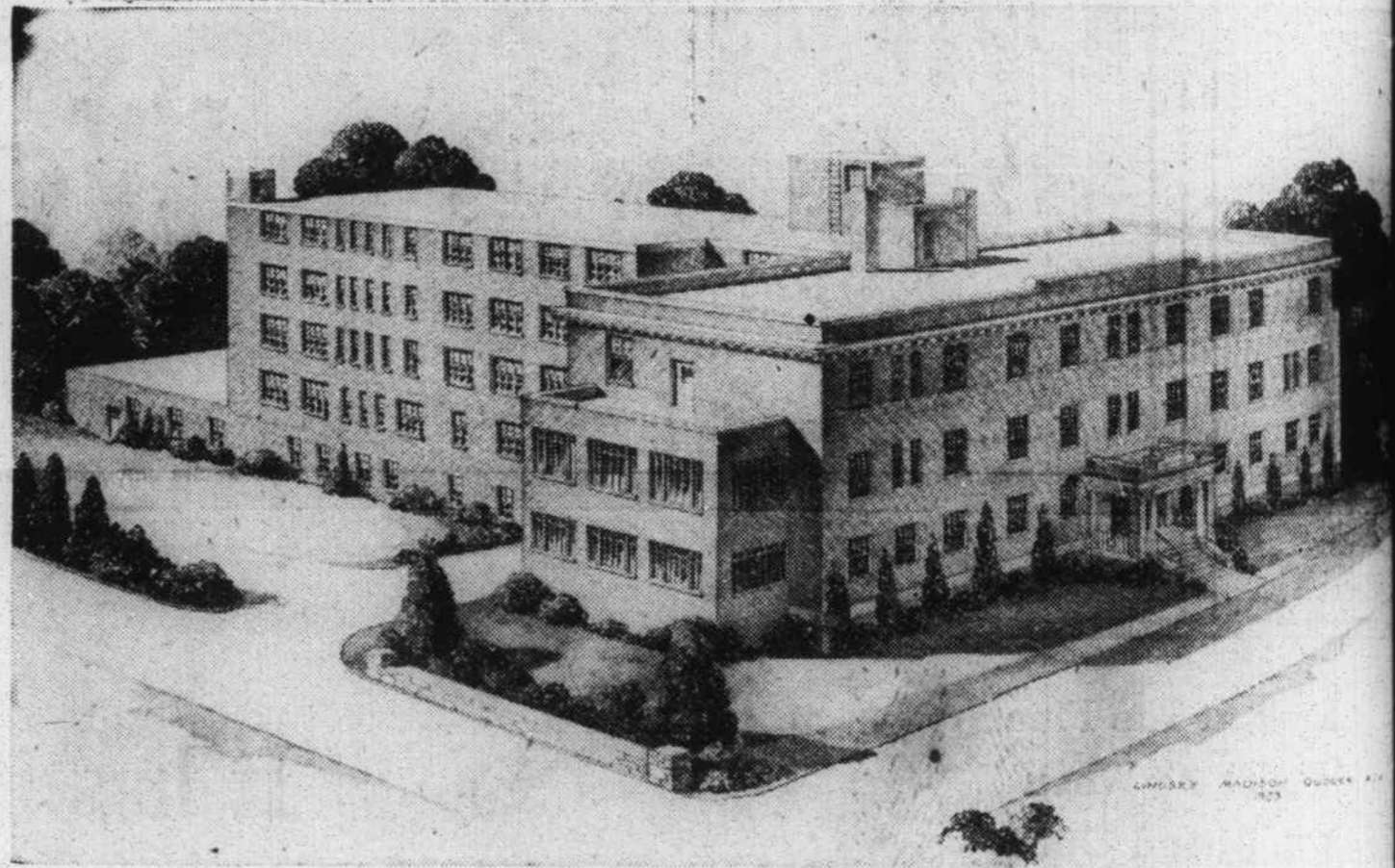
Old Charitable Trust

MIDDLETON, R. I. (AP) —ter 277 years, a charitable trust which Rhode Islanders believe America's oldest, is still at its profits for the relief of the poor and the education of the poor.

When John Clarke, the minister, died in 1676, he provided that his farms in the town were to be held in trust for the relief of the poor and the education of their children.

The trustees are still led by John Clarke's widow. In 1952, they gave \$300 to the of a former pastor, \$50 to nine students, and \$300 in donation by the Rev. William pastor of the United Church, John Clarke of Newport.

After taxes and expenses of the farms — now worth \$41,600 — yields about \$1,000 a year.



take it from me - - -

The Haywood County Hospital was mighty fine before the expansion program — Now it is even much better.

I am proud of this institution, and know from experience the fine services rendered.

Jimmy Mann

Operator of Waynesville Art Gallery

1953 — Our 20th Season In Waynesville

Farragut's Ship Rots

NORFOLK, Va. (AP) — A tired old lady droops in her berth here while congress ponders whether it should give her an expensive prescription that would prolong her life. The old lady is the once proud USS Hartford on whose decks Admiral Farragut in his battle with the Confederates in Mobile Bay yelled:

"Damn the torpedoes, Full speed ahead."

A bill has been introduced in the House of Representatives to restore the old lady and send her to Mobile as an historic relic. The Navy estimates more than a million dollars would be required to restore her.

Meanwhile she is slowly rotting away in her berth at the St. Helena Annex of the Norfolk Naval Shipyard.

Many food experts recommend that adults consume at least one pint of milk a day.

NOAH NUMSKULL

I'M JUST FOLLOWING INSTRUCTIONS —

DEAR NOAH — IF YOU READ A SIGN THAT SAID "WET PAINT", WOULD YOU THROW WATER ON IT?

MRS. K. M. POLING
TOLEDO, OHIO

DEAR NOAH — IS IT IMPROPER TO WEAR A T-SHIRT ON A COFFEE PLANTATION?

L. I. MILLER
ALLENTOWN, PA.

SEND YOUR GAG TO "NOAH"