

A PAGE ABOUT THE AREA DEVOTED TO Information For Visitors



C. Hyatt New Champion of Local Golf Tournament

C. Hyatt of Asheville, idled the summer with an injury. Thursday flashed the news which has made him one of the top players in the Western North Carolina's lead-ers.

Jovial, chubby Hyatt romped to the championship of the Waynesville Country Club's men's tournament by dethroning Weldon Doe, Jr. of Montgomery, who had won for three straight years. Hyatt took the match, scheduled for three holes, by the amazing score of 10 and 9.

Hyatt was never in contention as he took the first five holes, leading 5-0. He closed out the match on No. 27 after Doe had taken the first 18.

Hyatt fired a five-under 66 on the 18 although he had two holes in hand. His card contained seven birdies and nine pars. Doe fired a 71 on the first 18. Both golfers

shot 36s on the final nine.

The first two holes gave a good indication of what was to come as Hyatt canned birdie threes. After driving 255 yards on the first tee, J. C. sent a wedge shot to within two feet of the birdie and his putt was true. Doe got down in four.

Again on the second hole a good second shot put Hyatt close in, the ball stopping one foot from the pin. Doe again had a par.

After Hyatt snatched Nos. 3, 4 and 5 with two pars and a birdie it became only a matter of time.

FINAL RESULTS

First Flight
Dick Davis, Asheville, defeated Ben Davis, Waynesville, 3-2.

Second Flight
Jack Rogers, Waynesville, defeated B. L. Ray, Canton, by default.

Third Flight
Bill May, Fort Lauderdale, Fla., defeated N. P. Calhoun, St. Augustine, 2-up.

Fourth Flight
C. H. Rhodes, Charleston, S. C., defeated Noyes Long, Old Hickory, Tenn., 7-5.

Fifth Flight
K. E. Dunklin, Nashville, Tenn., defeated Charles Turnbull, Clearwater, Fla., 1-up.

Sixth Flight
H. B. Royall, Coral Gables, defeated R. R. Kibbe, Jr., Waynesville, 1-up.

Seventh Flight
George Murdock, Coral Gables, Fla., defeated Charles Duckett, Canton, 1-up.

Eighth Flight
W. R. Royall, Jr., Erie, Pa., defeated J. H. Winters, Miami, 1-up, 21 holes.

Ninth Flight
J. W. Holland, Miami, Fla., defeated Harry Millar, Waynesville, 3-2.

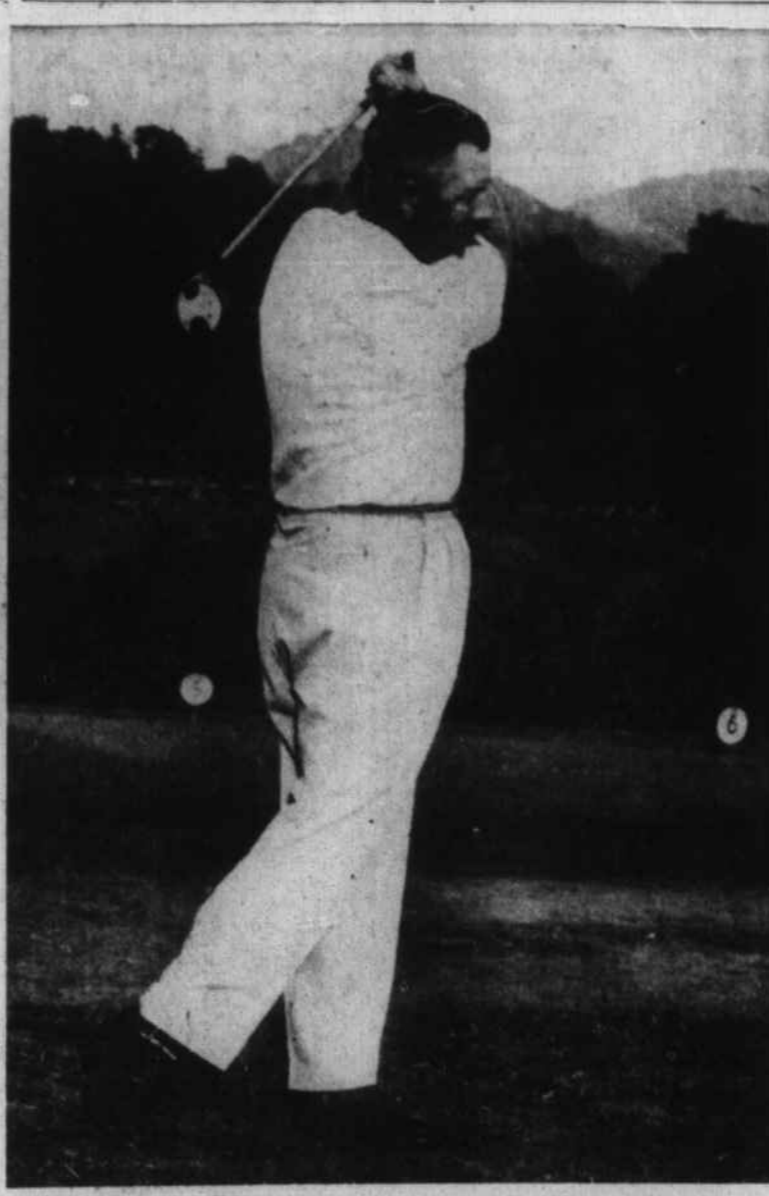
Championship Consolation
Ed Cuttino, Sumter, S. C., defeated Leonard Flynn, Asheville, 3-2.

First Flight Consolation
Ralph James, Jr., Asheville, defeated Ben Davis, Waynesville, 3-2.

Second Flight Consolation
Hike Eastep, Selma, Ala., defeated Ben Franklin, Gainesville, Fla., 3-2.



JONATHAN WOODY, right, presents the championship trophy to J. C. Hyatt, new champion of the Waynesville Country Club Golf Tournament. The presentation was made Thursday night, after the finish of the largest tournament in the 8 years. (Mountaineer Photo).



J. C. HYATT, Asheville, new champion of the Waynesville Country Club Golf Tournament. The new champion dethroned Weldon Doe, Jr., who has held the title for three consecutive years. This shows Hyatt teeing off on the first hole. (Mountaineer Photo).

Great Smokies Given Less Than Half Million For '53

WASHINGTON (AP)—The National Park Service has announced that \$153,453 will be spent for management and protection of Great Smoky Mountains National Park in the fiscal year ending next June 30.

This amount, the service said, is the largest in the \$425,538 congressional appropriation for improvement of the Tennessee-North Carolina park during the 12-month period.

The full appropriation, the service added, will be divided as follows:

Management and protection \$153,453; forestry and fire control \$29,063; soil and moisture \$500.

Building and utility maintenance and operation \$61,557; road and trail maintenance \$118,165.

Also for building and utilities \$62,800 to be apportioned as follows:

Deep Creek campground tables and fireplaces in North Carolina \$5100; comfort stations at Helntooga and Balsam Mountain Campgrounds in North Carolina \$17,600.

Cades Cove in Tennessee—tables and fireplaces \$9900, water system \$17,600 and sewer system \$12,600.

Advance construction, planning and survey for the Foothills Parkway connecting road to the Great Smoky Mountains National Park in Tennessee \$7000.

Roads and trails construction totaling \$10,200 for minor items, principally roads in parking area of Balsam campgrounds in the North Carolina section \$4000; driveways and walks in the Tremont-Warden station in Tennessee \$3600 and driveways and walks in the Greenbrier warden station in Tennessee \$2500.

Bear Bites Building

EAST LAKE SHORE, Mont. (AP)—Black bears scout for sweet cherries along East Shore of Flathead Lake. While waiting for the cherries to ripen, the bears don't appear to be too choosy about their diet.

One even tried to take a chunk out of the corner of a new house belonging to Orville Walker.

The worm-like peripatus, a relic of the age of dinosaurs, is protected by law on Barro Colorado Island, Canal Zone.

No Billboards, Trucks On Blue Ridge Pkwy

One of the few things about the Blue Ridge Parkway that does not change is the fence—weathered chestnut rail fence. Also constant are the mountaineer cabins, of which a few remain. One in particular is set in its own little park and easily seen from the highway. This is the Brinegar Cabin near Doughton Park.

Another thing about the Parkway that does not change is the absence of billboards and trucks. No commercial traffic or advertising is permitted along its entire length, which makes for startling contrast with ordinary highways.

Changing Foliage Replaces Flowers As Color Highlight

As the last flowers of late summer and early autumn come into bloom along the roadside of Western North Carolina, the first splashes of fall foliage put in their appearance on the heights.

Flowers noted on the roadways are white, blue and lavender asters, yellow and purple ironweed and the several varieties of golden-rod.

At the same time an occasional tree, or even an enterprising leaf, puts out the first finger of rust or gold. Dogwoods are already beginning to show dark red at the tips of the leaves. Black gum is another deep red to watch for—and if the black gum is hollow, you may have found a "bee tree".

Another tree that turns early in the season is sourwood—also a dark red. Maples are familiar to nearly everyone, and as often as not, the "overnight" switch from green to red-gold is as sure a sign of autumn as the first robin is of spring.

Cool weather without heavy frosts brings out the best color display. As the thermometer slips lower, the trees cease to manufacture chlorophyll. Their green fades, revealing yellows previously masked. Starches or sugars in trees such as maple, dogwood and gum, set to work and almost literally "paint the tree red".

Many High Peaks Accessible By Car

The highest mountains in Eastern America are found in North Carolina, and many peaks, including 6,684-foot high Mount Mitchell, are accessible by automobile. At Bakersville, a new paved highway, N. C. 261, connecting with a recently completed Forest Service road, makes the summit of Roan Mountain an interesting drive from the community of Bakersville. At the top of Roan Mountain is a newly graded and gravel parking space for 300 cars.

From Lenoir, at the foot of the Blue Ridge Mountains, rebuilding of Highway 321 makes Blowing Rock, one of the largest resorts near the Blue Ridge Parkway, only a few minutes' drive away.

New private toll roads lead to the tops of Grandfather Mountain, near the Parkway and the mountain resort of Linville, and Whiteside Mountain, in the Sapphire Country toward the southern tip of the Appalachians. Atop Grandfather Mountain is Mile-High Swinging Bridge, completed in the autumn of 1952. It connects two of

Cowee Grading 75% Complete

Of interest to Haywood drivers will be news that the grading is now approximately 75 per cent complete on the Franklin-Cowee Gap highway project. Most of the heavy earth-moving equipment has been taken off the job by the contractor.

Resident Engineer S. T. Ury said this week most of the work on the project is being done in the Cowee Gap vicinity.

Shafts to divert underground water in the gap are being sunk, he said, in preparation for blasting the roadbed through solid rock in the gap.

A four-barrel culvert is under construction over Rabbit Creek and the new bridge over Watauga Creek is nearing completion.

this famous mountain's rock peaks. From a parking and picnic area stone steps lead to the bridge, and foot trails wind towards other peaks of the mountain.

WATCH
Repairing
Guaranteed
For
ONE YEAR
Bring It To
RELIABLE WELERS
EASY TO PAY THE RELIABLE WAY
WAYNESVILLE, N.C.

Third Flight Consolation

Walter Sowell, Sumter, S. C., defeated Dan Watkins, Waynesville, 3-2.

Fourth Flight Consolation

S. W. Keen, Lake Wales, Fla., defeated H. D. Leavitt, Fort Lauderdale, Fla., 3-2.

Fifth Flight Consolation

Clem Price, Key West, Fla., defeated R. L. Prevost, Waynesville, 2-1.

Sixth Flight Consolation

James West, Miami, defeated Wyatt Hodges, Fort Lauderdale, 2-1.

Seventh Flight Consolation

A. G. Lackey, Charlotte, defeated Clay Harbison, Tampa, Fla., 1-up.

Eighth Flight Consolation

Holmes Rich, Coral Gables, defeated Cal Houghland, Nashville, 1-up, 20 holes.

Championship Consolation

Ed Cuttino, Sumter, S. C., defeated Leonard Flynn, Asheville, 3-2.

First Flight Consolation

Ralph James, Jr., Asheville, defeated Ben Davis, Waynesville, 3-2.

Second Flight Consolation

Hike Eastep, Selma, Ala., defeated Ben Franklin, Gainesville, Fla., 3-2.

Bookmobile Schedule

Sept. 1 - CLYDE	
L. E. McGowan	9:15- 9:30
Sam Rathbone	9:45-10:05
M. W. Dotson	10:20-10:40
Sam Jackson	10:45-11:00
P. C. Mann	11:15-11:30
Mrs. Henry Osborne	11:35-11:50
Frank Stamey	12:00-12:45
Clyde Town Hall	1:00- 2:00
Fines Grocery	2:10- 2:30
Sept. 2	
ALLENS CREEK - BALSAM RD. - HYATT CREEK	
Paul Browning	9:15- 9:30
E. K. Chambers	9:40- 9:55
Allens Creek School	10:00-10:15
Kay Allen	10:30-10:45
Harry Middleton	10:55-11:30
Thelma Arrington	11:45-12:15
Guy Queen's Store	12:20-12:35
Barber Orchards	12:40- 1:00
C. D. Walker	1:10- 1:30
Allen Hyatt	1:45- 2:00
Sept. 4	
L. JUNALUSKA - RATCLIFFE COVE	
Jack Long	9:20- 9:45
New Bridge	9:50-10:10
Ann Shelton	10:20-10:45
Ollie Mack	11:00-12:00
Roy Meador	12:15-12:30
Hugh Frances	12:35- 1:00
Ratcliffe Cove Groc.	1:10- 1:30
Mt. Experiment Sta.	1:40- 1:55
Wiley Franklin	2:05- 2:30
Henry Francis	2:45- 3:00

Grandfather Mountain is said by some to be the oldest mountain on earth.

THUNDERLAND

ASHEVILLE'S NEW THUNDERLAND

A DRAMA With Mountain Music Based On The Life Of DANIEL BOONE

COMPANY OF 105

LIGHTED PARKING AREA FOR 1800 CARS

1200 SEATS 1.50
Others 2.00-2.50-3.00
Children Under 12 Half Price

ASHEVILLE'S FOREST AMPHITHEATRE NIGHTLY at 8:15 EXCEPT SUNDAY TO SEPT. 7

MOUNTAIN CRAFTS

SOUVENIRS AND GIFTS

You Are Cordially Invited To Come In And Browse Around

BRANCH'S HOUSE OF CRAFTS

U. S. 19 Adjacent West Entrance to Lake Junaluska

LET US TAKE OVER YOUR WASH DAYS

The place for laundry work is on our plant—not your home. Why knock yourself out washing and ironing when we LIKE to do it? Pleasing particular customers is our special pride!

It costs so little to enjoy our service, you'll wonder why you waited to call GL 6-5367.

WAYNESVILLE LAUNDRY

"Particular Cleaners For People Who Care"

Fred Sheehan — Joe Liner
Boyd Avenue

WHO THREW THE OVERALLS IN MR. MURPHY'S CRANKCASE?

Well, maybe they weren't overalls, but they sure sound like it! Time for Mr. Murphy to get a check-up... and time for you, too if your car has been acting up. Drive in here for dependable inspection!

MOTTINGER MOTOR CO.

Haywood St. Dial GL 6-4685

WISE-UP!

COAL-UP NOW!

WHILE SUMMER PRICES ARE IN EFFECT

DIAL GL 6-3271

LET US FILL YOUR BIN TODAY

Richland Supply Co.

242 COMMERCE

CHARLIE'S TEXACO SERVICE

OPEN 24 HOURS A DAY

ONE OF THE MOST COMPLETE SERVICE CENTERS IN W. N. C.

B. F. GOODRICH TIRES & TUBES

FOR ROAD SERVICE
DIAL GL 6-4971

Small Talk

BIG EVENTS

Your Telephone Keeps You in Touch!

SOUTHERN BELL TELEPHONE AND TELEGRAPH COMPANY

Working Always to Serve North Carolinians Better