

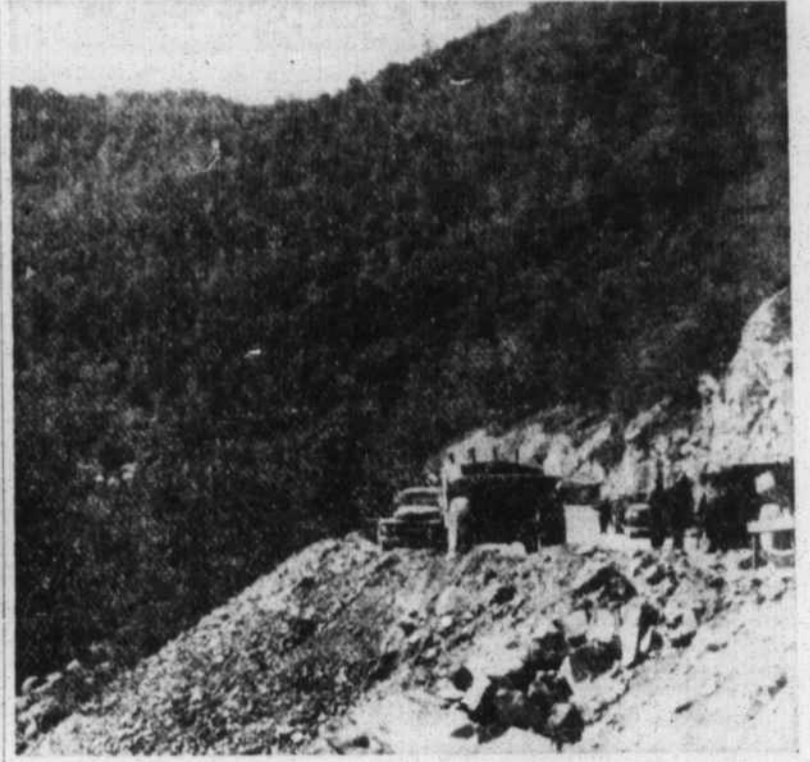
Pigeon River Road Will Open Up Wide, New Expanse Scenic Beauty



WORK ON THE PIGEON Thursday afternoon concerning the progress being made on a new link of the new Pigeon River Road, indicated (left to right) C. W. Lee, assistant division engineer; Charles B. McCrary, chairman of Haywood County Democratic executive committee; G. G. Page, division engineer; F. L. Hutchison, resident engineer; R. W. Chandler, superintendent for the A. B. Burton Construction Co.; Harry E. Buchanan, 14th District highway commissioner, and A. B. Burton of Lynchburg, Va., the contractor. (Mountaineer Photo).



THOUSANDS OF TONS OF ROCK complicate the task of carving the new Pigeon River Road from the mountainside in the Waterville section of Haywood County. Here a truck dumps a load of rocks and dirt from a steam shovel at work on the road. (Mountaineer Photo).



HIGH MOUNTAIN WALLS of the Pigeon River Gorge will make the new Pigeon River Road one of the most scenic in the county when finally completed several years hence. This scene is near the Tennessee-North Carolina state line. (Mountaineer Photo).

Many Beautiful Entries Expected Wed. In Canton Flower Show

The second annual flower show sponsored by the Canton Council of Garden Clubs will be held Wednesday, May 12 from 2 to 10 p.m. in the recreation room of the First Baptist Church in Canton.

"It's Spring Again" will be the theme of the show, which is under the direction of Mrs. James B. Hurley, general chairman, assisted by Mrs. Edward S. Conley and Mrs. W. C. Johnson.

Competition is open to all amateur gardeners, and accredited flower show judges will use the standard system of judging.

A tri-color ribbon will be awarded to the best horticultural specimen, also a tri-color ribbon will be awarded to the best arrangement in the show. A sweepstakes award will be given the winner of the greatest number of blue ribbon points, which must be earned in both arrangement and horticulture. A sweepstakes prize will also be awarded in the junior division of the show. The Stella P. Bottoms trophy will be awarded to any garden club member of Canton who has the highest number of blue ribbon points in arrangements.

All horticultural specimens must have been grown by the exhibitor. Potted plants must have been in the exhibitor's possession at least three months. All arrangements must be the work of the exhibitor, but he does not have to grow the material used. An exhibitor may place only one entry in each class and its subdivisions, with the exception of horticulture specimens where each separate color will constitute a subdivision. Exhibitors must determine the classification of the entry before applying for the entry cards, and all horticultural specimens should be labeled as to variety whenever possible.

outing, safe in the knowledge that there will be no unpleasant aftermaths."

Be sure to clean up camp site after picnic and be careful of fire, Mr. Arrington added.

Don't serve custard pies and pastries, meat and meat products, milk and milk products, poultry or salads unless kept chilled until time of serving.

If meats are to be served hot, don't cook them until just before they are to be eaten.

Keep fingers out of food and utensils.

Keep food protected against flies and persons coughing or sneezing over it.

"If these elementary principles of good food handling are followed," he said "everyone will be able to eat, drink and enjoy the

Competition is open to all amateur gardeners, and accredited flower show judges will use the standard system of judging.

A tri-color ribbon will be awarded to the best horticultural specimen, also a tri-color ribbon will be awarded to the best arrangement in the show. A sweepstakes award will be given the winner of the greatest number of blue ribbon points, which must be earned in both arrangement and horticulture. A sweepstakes prize will also be awarded in the junior division of the show. The Stella P. Bottoms trophy will be awarded to any garden club member of Canton who has the highest number of blue ribbon points in arrangements.

All horticultural specimens must have been grown by the exhibitor. Potted plants must have been in the exhibitor's possession at least three months. All arrangements must be the work of the exhibitor, but he does not have to grow the material used. An exhibitor may place only one entry in each class and its subdivisions, with the exception of horticulture specimens where each separate color will constitute a subdivision. Exhibitors must determine the classification of the entry before applying for the entry cards, and all horticultural specimens should be labeled as to variety whenever possible.

Competition is open to all amateur gardeners, and accredited flower show judges will use the standard system of judging.

A tri-color ribbon will be awarded to the best horticultural specimen, also a tri-color ribbon will be awarded to the best arrangement in the show. A sweepstakes award will be given the winner of the greatest number of blue ribbon points, which must be earned in both arrangement and horticulture. A sweepstakes prize will also be awarded in the junior division of the show. The Stella P. Bottoms trophy will be awarded to any garden club member of Canton who has the highest number of blue ribbon points in arrangements.

All horticultural specimens must have been grown by the exhibitor. Potted plants must have been in the exhibitor's possession at least three months. All arrangements must be the work of the exhibitor, but he does not have to grow the material used. An exhibitor may place only one entry in each class and its subdivisions, with the exception of horticulture specimens where each separate color will constitute a subdivision. Exhibitors must determine the classification of the entry before applying for the entry cards, and all horticultural specimens should be labeled as to variety whenever possible.

Be sure to clean up camp site after picnic and be careful of fire, Mr. Arrington added.

Competition is open to all amateur gardeners, and accredited flower show judges will use the standard system of judging.

A tri-color ribbon will be awarded to the best horticultural specimen, also a tri-color ribbon will be awarded to the best arrangement in the show. A sweepstakes award will be given the winner of the greatest number of blue ribbon points, which must be earned in both arrangement and horticulture. A sweepstakes prize will also be awarded in the junior division of the show. The Stella P. Bottoms trophy will be awarded to any garden club member of Canton who has the highest number of blue ribbon points in arrangements.

All horticultural specimens must have been grown by the exhibitor. Potted plants must have been in the exhibitor's possession at least three months. All arrangements must be the work of the exhibitor, but he does not have to grow the material used. An exhibitor may place only one entry in each class and its subdivisions, with the exception of horticulture specimens where each separate color will constitute a subdivision. Exhibitors must determine the classification of the entry before applying for the entry cards, and all horticultural specimens should be labeled as to variety whenever possible.

Competition is open to all amateur gardeners, and accredited flower show judges will use the standard system of judging.

A tri-color ribbon will be awarded to the best horticultural specimen, also a tri-color ribbon will be awarded to the best arrangement in the show. A sweepstakes award will be given the winner of the greatest number of blue ribbon points, which must be earned in both arrangement and horticulture. A sweepstakes prize will also be awarded in the junior division of the show. The Stella P. Bottoms trophy will be awarded to any garden club member of Canton who has the highest number of blue ribbon points in arrangements.

All horticultural specimens must have been grown by the exhibitor. Potted plants must have been in the exhibitor's possession at least three months. All arrangements must be the work of the exhibitor, but he does not have to grow the material used. An exhibitor may place only one entry in each class and its subdivisions, with the exception of horticulture specimens where each separate color will constitute a subdivision. Exhibitors must determine the classification of the entry before applying for the entry cards, and all horticultural specimens should be labeled as to variety whenever possible.

Competition is open to all amateur gardeners, and accredited flower show judges will use the standard system of judging.

A tri-color ribbon will be awarded to the best horticultural specimen, also a tri-color ribbon will be awarded to the best arrangement in the show. A sweepstakes award will be given the winner of the greatest number of blue ribbon points, which must be earned in both arrangement and horticulture. A sweepstakes prize will also be awarded in the junior division of the show. The Stella P. Bottoms trophy will be awarded to any garden club member of Canton who has the highest number of blue ribbon points in arrangements.

All horticultural specimens must have been grown by the exhibitor. Potted plants must have been in the exhibitor's possession at least three months. All arrangements must be the work of the exhibitor, but he does not have to grow the material used. An exhibitor may place only one entry in each class and its subdivisions, with the exception of horticulture specimens where each separate color will constitute a subdivision. Exhibitors must determine the classification of the entry before applying for the entry cards, and all horticultural specimens should be labeled as to variety whenever possible.

Competition is open to all amateur gardeners, and accredited flower show judges will use the standard system of judging.

A tri-color ribbon will be awarded to the best horticultural specimen, also a tri-color ribbon will be awarded to the best arrangement in the show. A sweepstakes award will be given the winner of the greatest number of blue ribbon points, which must be earned in both arrangement and horticulture. A sweepstakes prize will also be awarded in the junior division of the show. The Stella P. Bottoms trophy will be awarded to any garden club member of Canton who has the highest number of blue ribbon points in arrangements.

All horticultural specimens must have been grown by the exhibitor. Potted plants must have been in the exhibitor's possession at least three months. All arrangements must be the work of the exhibitor, but he does not have to grow the material used. An exhibitor may place only one entry in each class and its subdivisions, with the exception of horticulture specimens where each separate color will constitute a subdivision. Exhibitors must determine the classification of the entry before applying for the entry cards, and all horticultural specimens should be labeled as to variety whenever possible.

Picnickers Warned Against Food Poisoning On Outings

Though picnics and outings are too many in the past have up with food poisoning outbreaks, Jack Arrington, County Health Officer, warned today.

A little knowledge and care of these outbreaks could be prevented," he said. "It is natural for us to live out of doors as much as possible in the summer. But during the summer months need careful attention and protection - if they are to be held for a length of time before be-

ing eaten on an outing. So, protect your food to protect yourselves."

To prevent food poisoning he urged housewives and workers for church and lodge picnics to observe the following rules:

See that before preparation food is clean, wholesome, free from spoilage and safe for human consumption.

See that utensils in which food is prepared and served are clean and free of germs. Paper utensils

are ideal for picnic use, since they are compact and light, assure each person individual, germ-free utensils, and are readily disposable.

Don't serve custard pies and pastries, meat and meat products, milk and milk products, poultry or salads unless kept chilled until time of serving.

If meats are to be served hot, don't cook them until just before they are to be eaten.

Keep fingers out of food and utensils.

Keep food protected against flies and persons coughing or sneezing over it.

"If these elementary principles of good food handling are followed," he said "everyone will be able to eat, drink and enjoy the

ANNOUNCING

THE OPENING

OF

HENRY DAVIS USED CARS

AND

PAINT AND BODY WORKS

HENRY DAVIS INVITES YOU TO VISIT HIM AT HIS NEW BUILDING ON HAYWOOD STREET. IF YOU ARE INTERESTED IN THE BEST USED CARS ON THE MARKET, BE SURE TO SEE HENRY DAVIS BEFORE YOU TRADE.

LET OUR EXPERTS DRESS UP YOUR AUTOMOBILE FOR SUMMER DRIVING. WE OFFER THE BEST IN PAINT AND BODY WORK.

NO JOB TOO SMALL OR TOO LARGE!

HENRY DAVIS USED CARS

HAYWOOD STREET

DIAL GL 6-5630



IF YOU LIKE A SUNDAE YOU'LL LOVE BILTMORE'S

WINKY BARS

(Sundae-On-A-Stick)

Mother, have your children discovered Winky Bars yet? Winky Bar is Biltmore's ice cream sundae-on-a-stick; finest chocolate, roasted almonds, bits of cherry and that famous Biltmore ice cream. Your Biltmore dealer has Winky Bars specially priced right now: plastic bag of three for 29c. He also has Medal of Merit ice cream in the round carton: Biltmore's smoother, richer cream for those who prefer French type ice cream.

Are you SURE you know enough about the source of your dairy products to have a feeling of security for your family? Biltmore is ONE dairy which KNOWS the HOW, WHY and WHERE-FROM of its milk! Biltmore Dairy Farms has its own herd—Producer of Champions—its own selected producers; its own method of soil-feeding to provide the vitamins and minerals so necessary in milk. Be SURE and get Biltmore. Your routeman will be glad to add you to his list of customers. Phone 6-6091...

Biltmore Dairy Farms

Lake Junaluska

Now Representing...

Blue Cross

IN HAYWOOD COUNTY



Hospital Care Association — Your non-profit Blue Cross plan — announces the appointment of Mr. E. Wayne Rogers as its Haywood County Representative. Get the best hospital — surgical — maternity care that money can buy. Join Hospital Care Association of Durham and enjoy Blue Cross protection. See or write your local representative.

Only Hospital Care of Durham Offers You All These Benefits:

SEVENTY (70) FULL DAYS OF HOSPITAL CARE per member per year for each separate cause.

- COMPLETE payment for ward bed OR \$5, \$6, \$8, or \$10 toward cost of semi-private or private room, depending upon the certificate you choose.
- ALL THESE EXTRAS... PAID IN FULL! UNLIMITED! Drugs (National Formularies) ... Operating Rooms ... X-Rays ... Dressings ... Splints ... Casts ... Laboratory Services ... Physical and Oxygen Therapy ... Transfusion Facilities ... Anesthesia ... Electrocardiograms ... Intravenous Solutions ... Pathology ... Basal Metabolism ... Out-Patient and Emergency Treatment Following Accidents ... Accident-Ambulance ... Many Others.
- NO ENROLLMENT FEE.

PLUS LIBERAL SURGICAL BENEFITS

PAYING, FOR EXAMPLE, UP TO: Appendectomy... \$100.00; Hysterectomy... \$150.00; Delivery of Baby (Family Membership)... \$50.00; Thyroidectomy... \$150.00; Tonsils Removed... \$25.00.

Special low rates on Group Enrollment. 5 or more. Dues payable monthly by payroll deduction or group treasurer where you work. Self-employed or persons working where there are less than 5 employees can join on direct enrollment. Dues payable quarterly by mail.

Join where you work. Ask your Employer to write Hospital Care Association for full details.

The HOSPITAL CARE ASSOCIATION, Inc.

HOME OFFICES: DURHAM, N. C.

Fourth Oldest Blue Cross Plan In America

MAIL TODAY

E. Wayne Rogers
Box 443, Lake Junaluska, N. C.

Send me information about Hospital Care's BLUE CROSS protection.

Name..... Age.....
 Street.....
 Town.....
 Place of Employment..... No. of Employees.....

