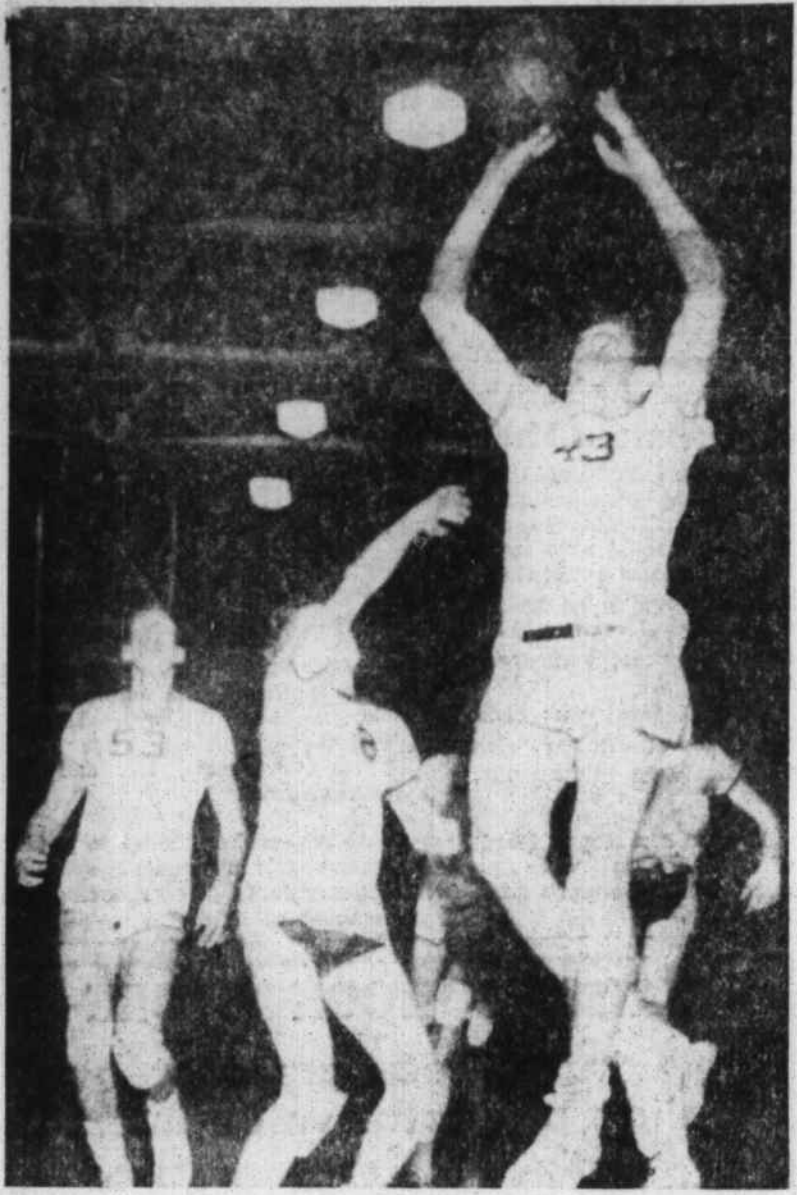


Waynesville To Invade Mars Hill; Other County Teams To See Action



CHARLES STAMEY, an adept football player with the Bethel Blue Demons, also knows what to do with a basketball as he drives in for a shot against Clyde Friday night in the first game in Clyde's new gymnasium. (Mountaineer Photo).

With the 1954-55 basketball season just getting underway, there remains only one school in the county—Waynesville—whose varsity teams have not been defeated, although the Bethel boys still have a spotless mark after two games last week.

Tuesday's games are: Waynesville at Mars Hill, Canton at Lee Edwards, Bethel at Edneyville, Crabtree-Iron Duff at Sand Hill, and Fines Creek at Clyde.

The Friday slate is: Crabtree-Iron Duff at Waynesville, Asheville School at Canton, Bethel at Fines Creek, Clyde at Walnut.

The Mountaineers piled up 80 points—largely through the efforts of Tommy Nichols who hit for 42—in winning over Fines Creek, 80-51, in their opener on Friday night. However, on Saturday night, Coach Swift's boys had some uncomfortable moments before downing Christ School 52-49, at Arden. Waynesville had a 32-21 lead at the half, but were outscored by the Greenies in the third quarter.

Actually, the game here Friday night was also close as Fines Creek scored ahead twice in the first half and the game was tied 26-all at the intermission. Then Nichols started pouring in the points in the second half and that was that.

Waynesville's girls performed well in handing the Fines Creek Filles their first defeat, 48-24, with Tulan Carver dropping in 23 points.

Crabtree-Iron Duff's girls pulled a major upset last Thursday by trouncing the county champion Bethel Belles, 44-33, on the Crabtree hardwood. The Bethel Blue Demons won over the C-ID Yellowjackets but only by a three-point margin at 60-57.

Clyde opened its new gymnasium Friday night, but couldn't halt the visiting Bethel basketweavers and lost 56-45 in the girls' game and 45-28 in the boys' game.

Canton hosted 67-47, by Lee Edwards last Wednesday, raked Mars Hill, 79-27. Friday night as the Black Bears opened their home season.

Wrestlers Of Four Nations Meet Here Saturday Night

Wrestlers from four different countries—the United States, Ireland, Turkey, and Mexico—will match muscles at the second big-time wrestling card, to be presented here Saturday night at the Waynesville Armory at 8 o'clock under sponsorship of the Waynesville Kiwanis Club.

One match—for one fall and a 30-minute time limit—will bring together Jimmy Confield of Valdese and Al Cortez of Mexico City. Confield, a 224-pounder, has had several matches with Lou Thez, world heavyweight champion, Cortez, who tips the scales at 228, is a former bullfighter and reputed to be especially rough.

The second match, also for one fall and with a 30-minute time limit, will feature a clash between Tinker Todd of Cork, Ireland and Prince Omar of Istanbul, Turkey—one of the most colorful wrestlers in the ring today.

The final event in the grunt and groan extravaganza will pit the winners of the first two events against the losers in an Australian tag team match for two best out of three falls and a one-hour time limit.

The grapplers will be brought here by Chief O. B. Saunooke of Cherokee, former world's champion. In charge of arrangements for the Kiwanis Club will be W. S. Roberts.

The Egyptians mummified many birds as sacred animals.

Catamounts Take Conference Win From Catawba

The Western Carolina Catamounts won their second game of the season and their first conference win by beating Catawba, 77-69, at Lexington.

Center Herman Shamel topped the Cats with 21 points on four fielders and 13 free throws. Warren Summy of Catawba also got 21 for the Indians.

Western Carolina held only a 37-35 margin at the half.

Three falls and a one-hour time limit.

The Egyptians mummified many birds as sacred animals.

The Egyptians mummified many birds as sacred animals.

St. John's Team Tops St. Francis Quintet, 39-30

Bill Leatherwood, high scoring guard with the Mountaineers last year, scorched the nets for 35 points Friday to lead St. John's of Waynesville to a 39-30 victory over St. Francis of Asheville in the St. Genevieve of the Pines gym at Asheville.

St. John's led 21-13 at halftime.

The lineup:

St. Francis (30) St. John's (39)
F—Lamb (4) Green
F—Patton (5) Leatherwood
C—DeBlaker (7) Arch (2)
G—Carter (5) Edge (2)
G—Meehan Leatherwood (35)
Subs: St. Francis—Davis 3, Dixon 6, Rinaldi, St. John's—Geter.
Half time score: St. John's 21-13.
Officials: Coman and Herring.

Use Mountaineer Want Ads



THE FIRST TIPOFF in the new Waynesville High School gymnasium finds Joe Aldridge of the Mountaineers and Bobby Hunter of the Fines Creek White Hornets ready to jump for the sphere. The referee is Don Tomberlin, coach of the Valley Springs girls' team. (Mountaineer Photo).

WTHS Defeats Fines Creek Twice; Mountaineers Edge Christ School

By BOB CONWAY

Crabtree-ID Girls Upset Bethel Belles

One year ago Waynesville High's girls' basketball team lost only one regularly scheduled game during the season and that was in the opener to Crabtree-Iron Duff. Later on the Mountaineers went on to win the Blue Ridge Conference championship.

Thursday night the very same fate befell the county champion Bethel Blue Belles, who were rudely upset by Crabtree's Blue Eagles on the C-ID court, 44-33.

Although Peggy Edwards, Bethel's blonde bomber hit 20 points, Barbara Smith also tallied 20 for Crabtree-Iron Duff while Louise Pressnell chipped in with another 23-14.

In the boys game, the Bethel Blue Demons, county runner-ups last year, just managed to get by the Crabtree Yellowjackets, 60-57. The Demons held a 29-23 edge at halftime.

Dean Reese with 18 and Toby Capps with 12 paced the Bethel quintet, while Crawford with 22 and Hoglen with 18 were the big guns for C-ID.

Bethel's next game will be at Edneyville Tuesday, while Crabtree-Iron Duff will travel to Sand Hill.

Girls' lineup:
Bethel (33) Crabtree-Iron Duff (44)
F—Edwards (20) Pressnell (19)
F—Pinkerton (2) Best (4)
F—Wilson (5) Smith (20)
G—Meehan McCracken (1)
G—Revis Sutton
G—D. Pressley McElroy
Subs: Bethel—Lowe, Jones, Pos.

Joe Aldridge Hits 24 Points Against Greenies

The Mountaineers won their second game of the new season Saturday night by edging the Christ School Greenies, 52-49, at Arden.

Waynesville held a 32-21 edge at halftime, but the home team came back in the third period to outscore the Mountaineers 16 to 6. WTHS managed a 14-12 margin in the fourth period.

Center Joe Aldridge led the Gold and Black, while Tommy Nichols chipped in with 16. Sewell, a forward, hit 16 for the Greenies.

In a preliminary, Christ School's Jayvees overwhelmed the Little Mountaineers, 25-9.

Waynesville will travel to Mars Hill Tuesday night and then return here Friday night for a contest with Crabtree-Iron Duff.

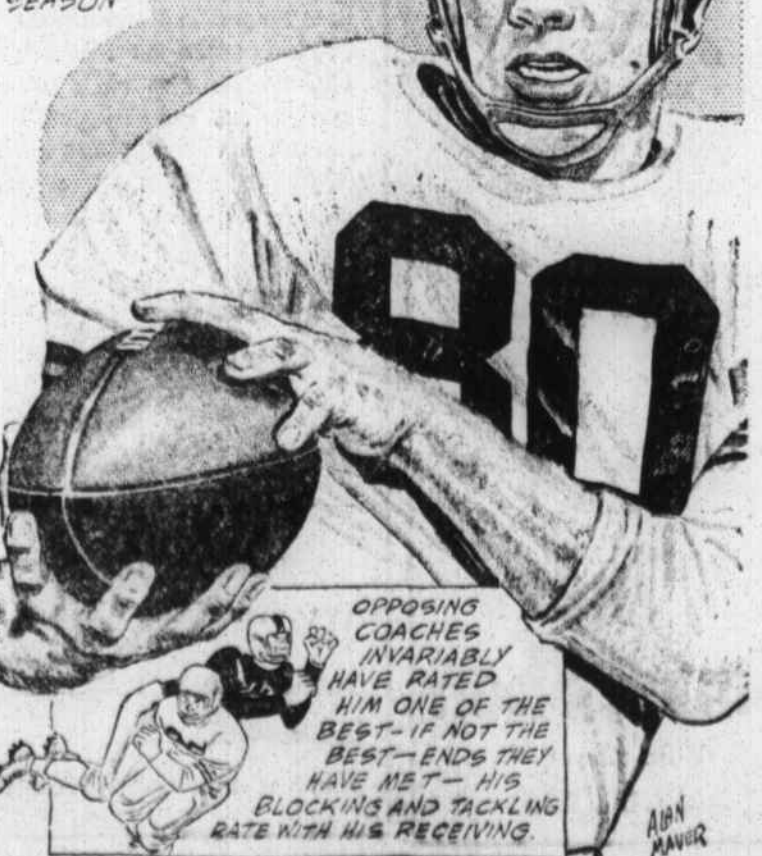
The lineup:
Christ School (49) Waynesville (52)
F—Sewell (16) G. Davis (1)
F—Pressley (7) Harris (4)
C—Underwood (12) Aldridge (21)
G—Martin (8) Nichols (16)
G—Washburn (6) Jordan (10)
Substitutes: Waynesville—Medford, Ballance, and Hooper.

Crabtree was leading at halftime, 19-16. Messer, Crabtree-Iron Duff—Crawford, Hill.

Boys' lineup:
Bethel (60) Crabtree-Iron Duff (57)
F—Reese (18) Crawford (22)
F—Capps (12) Hoglen (18)
C—Stamey (6) Walker (12)
G—Hargrove (6) Best (1)
G—Queen McElroy (2)
Subs: Bethel—Shipman, Warren, Phillips 4, West 13. Crabtree-Iron Duff—Evans 2.

EASTERN STANDOUT . . . By Alan Maver

RONNIE BEAGLE, NAVY'S GREAT PASS CATCHING AND EYE CATCHING END—THEIR TOP RECEIVER FOR THE 2ND STRAIGHT SEASON



OPPOSING COACHES INVARIABLY HAVE RATED HIM ONE OF THE BEST—IF NOT THE BEST—ENDS THEY HAVE MET—HIS BLOCKING AND TACKLING RATE WITH HIS RECEIVING.

Bethel To Install 'Foldaway' Seats In New Gymnasium

Bethel High will open its new gymnasium on December 16 against the Hendersonville Beareals, it has been announced by C. C. Poindexter, principal of the Bethel District schools.

An outstanding feature of the new structure will be "foldaway" seats to accommodate 1,000 spectators. The purchase cost of \$10,000 will be borne entirely by the Bethel District school.

To finance the installation of this

the WTHS reserves saw a lot of service in the boys game and performed creditably. . . the Mountaineers' second line of defense, however, lacks experience although the spirit is not lacking.

seating equipment, donations being sought by the school. . . Public recognition will be given to all donors, he said. . . Bethel's home schedule is: Dec. 15—Hendersonville, Jan. 3—Canton, Jan. 6—Crabtree, Jan. 13—Waynesville, Jan. 17—Edneyville, Jan. 24—Fines Creek, Jan. 27—Mars Hill, Jan. 31—Clyde, Feb. 10—Sand Hill.

WE ARE SPECIALISTS AT RAY'S IN 2-PIECE UNDERWEAR

Light... but plenty Warm!



This pair meets winter's toughest days... yet keeps you wrapped in comfort!

Healthknit

6 COMBINATIONS FOR MEN — Styled The Modern Way —

ALSO FOR BOYS 2-PIECE SUITS — In Several Combinations — In Winter Weights

DRAWERS IN 3 STYLES

- Briefs — Sizes 2 to 16
- Midways — Sizes 2 to 16
- Ankle Lengths — 8 to 16

THERE'S NO NEED TO FREEZE FOR LITTLE GIRLS

We Also Have Various Combinations of WINTER UNDERWEAR

Headquarters For Underwear

RAY'S DEPT. STORE

PREMIUM STAMPS IT PAYS TO TRADE AT RAY'S

1st...by far. New "Total Power" Esso Extra is breaking all past sales records... far outsells every other premium gasoline because it's the best you can buy!

First in sales of both premium and regular gasoline in the area where Esso products are sold

Your sign of "Happy Motoring"

Esso