

GO TO CHURCH SERVICES SOMEWHERE EVERY SUNDAY

The Golden Text

First Baptist Church
WAYNESVILLE
The Rev. T. E. Robinson, Pastor

**TROUBLED
CONFUSED
PERPLEXED**

Christ will provide the answer,
will help you solve every prob-
lem. He awaits your call.

**THE GLORY OF GOD
IS THE HOPE OF MEN**

SUNDAY—
9:45—Sunday School, There is a
place and a welcome here for those
of all ages.

9:45 to 12:00—The Nursery is
open.

11:00—Morning Worship, Ser-
mon, "A Bible Revival" by the
pastor, Music under the direction
of Charles Isley.

6:45 to 9:00—The nursery is
open.

6:45—Training Union.

8:00—Evening Worship, Sermon,
"Turning to God" by the pastor.

Special music by the Youth
Choir.

MONDAY—
7:30—YWA's meet with Mrs.
Wayne Edwards.

7:30—Revival, Dr. Archie Ellis
preaching.

TUESDAY—
7:30 a.m.—Revival Service.

2:30—Cherub choir practice.

3:30—Junior choir practice.

7:30—Revival Service.

WEDNESDAY—
7:30 a.m.—Revival Service.

6:30—Youth Choir rehearsal.

7:30—Revival Service.

8:15—Senior Choir rehearsal.

THURSDAY—
7:30 a.m.—Revival Service.

3:15—Junior G.A.'s meet at the
church.

7:30—Revival Service.

FRIDAY—
7:30 a.m.—Revival Service.

7:30—Revival Service.

**Christian Science
Service**

The Christian Science lesson-
sermon will be read Sunday morn-
ing at 11 o'clock in room number
11 on the first floor of the Ma-
sonic Temple.

A Testimony Meeting will be
held each Wednesday evening at
8 o'clock.

Public is invited.

**The Christian And
Missionary Alliance
Church Of Canton**

"A Bible Church With A Christ
Centered Message"

The Rev. David Richardson, Pastor

SUNDAY—
2:15 p.m.—Bible Study.

3:00 p.m.—Afternoon Service.

7:30 p.m.—Evangelistic Service.

Bethel Baptist Church

Rev. C. Lavern Bissett, Pastor

SUNDAY—
8:30 a.m.—"Bread of Life"

broadcast, Station WWIT, Canton.

10:00 a.m.—Sunday School.

11:00 a.m.—Preaching.

7:00 p.m.—Baptist Training
Union.

8:00 p.m.—Evangelistic Service.

WEDNESDAY—
7:00 p.m.—Choir practice.

7:30 p.m.—Prayer meeting.

7:30 p.m.—Children's Happy
Hour.

A 1,572-foot television tower at
Oklahoma City is claimed as the
world's tallest structure by its us-
ers, comparing it with the 1,472-
foot Empire State building.

A Revival will begin Sunday,
April 17 with the Rev. Thomas
Erwin preaching each evening at
7:30 o'clock. The pastor invites
visitors to this series of meetings.

LISTEN TO
"Salute To The Class of '55"
SUNDAY AFTERNOONS
2:30 P. M.
SYLVA HIGH SCHOOL
Sunday, April 17
You'll Hear
NARRATOR—Clarence Huggell
DIRECTOR—Mary Page
**CAST—Mary Morris, Linda Moody, Frankie Jean Cope,
Betsy Jones, Carole Kinsland, Patsy Wilson,
Homer Holden, Donna Hennessee, and Charles
Cathy.**
SENIOR CLASS ADVISOR—Mrs. Kathryn S. Morris
PRINCIPAL—Lee H. Galloway
WHCC
1400

Rehoboam, King of Judah

ILLUSTRATED SUNDAY SCHOOL LESSON

By Alfred J. Buescher

Scripture—II Chronicles 10-13; I Kings 12.



After the death of Solomon, his son, Rehoboam, went to Shechem to be crowned king. All Israel came to the city to see him crowned. Jeroboam, who had fled to Egypt from Solomon's wrath, returned and went with them.

Rehoboam told his people to come back in three days and he would answer them. First he sent for the older men of his father's court and asked them what his answer should be. They told him to be kind and just.

His people came to King Rehoboam complaining that his father had put grievous burdens upon them. If he would ease them of the heavy yoke that Solomon had imposed, they would serve him loyally all his days.

Then Rehoboam sent for the young men who had grown up with him and asked them what he should say. They said to him that he would increase, not lessen, the people's burdens, and he did.

MEMORY VERSE—James 1:5.



Rehoboam forsakes the council of the old men. "If any of you lack wisdom, let him ask of God, that given him liberally, and upbraideth not; and it shall be given him James 1:5.

Allens Creek Missionary Baptist Church

Rev. C. D. Sawyer, Pastor
"And when the day of Pentecost was fully come; they were all with one accord in one place."
Revival will begin Sunday, April 17.

SUNDAY—
10:00 a.m.—Sunday School, Carl Brooks, Superintendent.

11:00 a.m.—Morning Worship.

7:00 p.m.—Training Union. Ken Caldwell, Director.

8:00 p.m.—Evening Worship.

ANNOUNCEMENTS AND ACTIVITIES
All other activities will be postponed due to the Revival.

Everyone is invited to attend. If you have a Lost Loved One meet in the prayer room 30 minutes before services for prayer.

We are delighted to have Rev. A. P. Millen to speak for us.

Woodland Baptist Church

MEDFORD FARM COMMUNITY
The Rev. G. W. Jameson, Pastor

SUNDAY—
9:45 a.m.—Sunday School. Vardy Fugate, Supt.

11:00 a.m.—Morning Worship. Message by the pastor.

6:45 p.m.—Training Union. Harden Stephenson, director.

8:00 p.m.—Evening Worship. Message by the pastor.

WEDNESDAY—
7:30 p.m.—Midweek Prayer Service.

Ratliff Cove Baptist Church

"A Friendly Church In A Friendly Community."
The Rev. Gay Chambers, Pastor

SUNDAY—
10:00 a.m.—Sunday School meets with Jimmy Messer, Superintendent, in charge.

7:00 p.m.—Training Union meets with Troy Franklin, director, in charge. The members of the Meadow Grove Baptist Church will be our guests for Training Union. After Training Union their choir will sing.

WEDNESDAY—
7:00 p.m.—Prayer meeting.

Red Bank Baptist Church

Rev. Will Pharr, Pastor

SUNDAY—
10:00 a.m.—Sunday School. Don Smathers, Supt. Walter Bryson, Associate Supt.

7:00 p.m.—Training Union. John Trull, Director.

A Revival will begin Sunday, April 17 with the Rev. Thomas Erwin preaching each evening at 7:30 o'clock. The pastor invites visitors to this series of meetings.

Bethel Methodist "Bethel on the Pigeon"

The Rev. L. B. George, Minister



Church School opens at 10 o'clock. There are classes for all who wish to attend. M. C. Nix is the general superintendent.

Morning Worship at eleven o'clock. Though the Attendance Crusade ended with Easter, with fine results, all the members of the church are asked to continue their good attendance record.

Youth meeting at the church at seven o'clock, Sunday evening. This meeting will be of interest as it will follow the mid-season Retreat held at Brevard College.

Boy Scout Troop No. 12 will meet at the church Monday at 7:00 o'clock.

Choir rehearsal each Wednesday evening at the church at 7:30.

All members of the choir are invited to attend the rehearsals regularly. Miss Maud Worley is the choir director. Gudgey Worley is the pianist.

Crabtree Baptist Church

Route 1, CLYDE, N. C.
The Rev. Doyle Miller, Pastor

SUNDAY—
10:00 a.m.—Sunday School. Charles Noland, Superintendent.

6:30 p.m.—Training Union. Mrs. Bob Fisher, Director.

8:00 p.m.—Sermon by the pastor.

TUESDAY—
7:00 p.m.—Prayer meeting at the church conducted by the pastor.

THURSDAY—
7:00 p.m.—Cottage Prayer Meeting at the home of Mr. and Mrs. Jess Haney.

Everyone is welcome to attend all services of the church.

Grace Church in the Mountains EPISCOPAL

The Rev. James Y. Perry, Rector Telephone GL 6-5036

SUNDAY—
8:00 a.m.—Holy Communion.

8:30 a.m.—Altar Guild Corporate Communion Breakfast.

9:30 a.m.—Sunday School. Ages 2-18.

10:45 a.m.—Nursery through church service.

11:00 a.m.—Morning Prayer and sermon.

12:00 Noon—Coffee Hour. Visitors welcome. Parish House.

WEDNESDAY—
3:15 p.m.—Junior choir practice.

7:00 p.m.—Choir practice.

THURSDAY—
8:00 p.m.—Local AA Chapter meeting. Parish House.

Rocky Branch Missionary Baptist Church

The Rev. W. G. Rhinehardt, Pastor

THURSDAY THRU SATURDAY—
7:00 p.m.—Revival services.

SATURDAY—
2:00 p.m.—Junior Choir Practice.

2:30 p.m.—Sunbeam Band meets.

SUNDAY—
10 a.m.—The church studying. Leonard Bryson, Sunday School Superintendent.

11:00 a.m.—Evangelistic services.

6:30 p.m.—The Church Training members. Tom Massie, Training Union Director.

7:30 p.m.—Evangelistic Service. If you do not attend Church elsewhere, we invite you to come and worship with us.

"I was glad when they said unto me, Let us go into the house of the Lord."—Psalm 122:1.

Fines Creek Memorial Baptist Church

The Rev. Harold Townsend, Pastor

SUNDAY—
Sunday School—10 o'clock every Sunday. Floyd Fisher, Supt.

Morning Worship—11 o'clock every 2nd and 4th Sundays.

Observance of the Lord's Supper at the morning worship service.

7:00 p.m.—Training Union every Sunday night.

Evening Worship—7:30 every 2nd and 4th Sundays.

SATURDAY—
7:30 p.m.—Prayer meeting.

Peachtree Missionary Baptist Church MAGGIE VALLEY

The Rev. John R. Willis, Jr., Pastor

SUNDAY—
7:30 p.m.—The Gospel Light Hour over Radio Station WWIT—Canton—970 on your dial.

9:45 a.m.—Sunday School. Claude Trantham, Supt., 1st and 3rd Sundays.

11:00 a.m.—Sunday School—2nd, 4th and 5th Sundays.

9:45 a.m.—Worship Service. Sermon by the pastor, 2nd, 4th and 5th Sundays.

7:30 p.m.—Prayer Services conducted by Rev. Rufe Finger.

WEDNESDAY—
7:30 p.m.—Prayer Service.

FRIDAY—
7:30 p.m.—Bible study.

SATURDAY—
7:30 p.m.—Prayer services in a home.

Free Methodist Church

The Rev. Russell M. Elder, Pastor Telephone GL 6-3597

Assembly and Oak Streets, Waynesville

SUNDAY—
Broadcast over Radio Station WHCC. "Moments of Meditation," at 7:45 a.m.

Sunday School, 10:00 a.m.

Morning Worship, 11:00 a.m.

Young People's service, 7:00 p.m.

Evening Evangelistic Service, 7:30 o'clock

WEDNESDAY—
7:30 p.m.—Bible Study.

Olivet Baptist Church

MAGGIE VALLEY

The Rev. John Willis, Jr., Pastor

SUNDAY—
7:30 a.m.—The Gospel Light Hour, Radio station WWIT in Canton, 970 on your dial.

9:45 a.m.—Sunday School. Wilburn Setzer, Superintendent.

11 a.m.—Worship Service. Sermon by the pastor.

7 p.m.—BTU. James Rich, director.

8 p.m.—Worship Service. Message by the pastor.

WEDNESDAY—
7:30 p.m.—Bible study and choir practice.

THURSDAY—
7:30 p.m.—Teachers meeting.

SATURDAY—
7:30 p.m.—Prayer service in a home.

Announcements
Old Folks Service each third Sunday night at 8 o'clock.

The Statue of Liberty in New York Harbor was unveiled Oct. 28, 1886.



THE REV. HERBERT MILLER, pastor of Balfour Baptist Church of Asheboro, is guest speaker for the simultaneous revival services at the First Baptist Church, Hazelwood, beginning Sunday, April 17.

E. Waynesville Baptists To Have Revival

A revival will begin at the East Waynesville Baptist Church, Sunday, April 17, with the Rev. Jyles Hall, pastor of Racepath Baptist Church of Ellenboro preaching each evening.

The revival is a part of the simultaneous crusade of the Baptist Churches throughout the Southern Baptist Convention.

The pastor, the Rev. Hobert Shope, Jr., invites the public to these services which commence at 7:30 o'clock each night.

Records of leprosy have been found as early as 1,500 B.C.

Rocky Branch Free Will Baptist Church

The Rev. N. F. Byrd, Pastor

SUNDAY—
10:00 a.m.—Sunday School, Lum Boone, Supt.

11:00 a.m.—Morning Worship. Sermon by pastor.

8:00 p.m.—Sermon by the pastor.

WEDNESDAY—
7:30 p.m.—Prayer service.

North Hazelwood Baptist Church

The Rev. Avery Peek, Pastor Sulphur Springs Road and Fairview Road

SUNDAY—
10:00—Sunday School.

11:00—Morning Worship. Sermon by the pastor.

7:00—Training Union.

Cottage Prayer each Saturday night.

Bible Study and Prayer Meeting led by the pastor every Wednesday night.

Fairview Baptist Church PLOTS CREEK

The Rev. Carl Cook, Pastor

SUNDAY—
Sunday School—10 a.m. Claude McLean, Superintendent.

Sermon by the pastor—2nd and 4th Sunday mornings and 1st and 3rd Sunday nights.

Cove Creek Baptist Church

The Rev. Carl Cook, Pastor 10 a.m.—Sunday School. Mrs. D. C. Davis, Superintendent.

Sermon by the pastor 1st and 3rd Sunday mornings and 2nd and 4th Sunday nights.

Hazelwood Methodist Charge

The Rev. L. E. Wiggins, Pastor

THE FRANCIS COVE CHURCH
SUNDAY—
10:00 a.m.—Morning Worship.

11:00 a.m.—Training Union. H. Boone, Supt.

THE HAZELWOOD CHURCH
SUNDAY—
10:00 a.m.—Sunday School. W. J. Nichols, Supt.

11:00 a.m.—Morning Worship.

Rev. Bazemore Speaker At Clyde Baptist Church

The Rev. C. W. Bazemore, Associate Editor of The Biblical Recorder, will be the guest speaker during revival services at the Clyde Baptist Church which will begin Sunday, April 17.

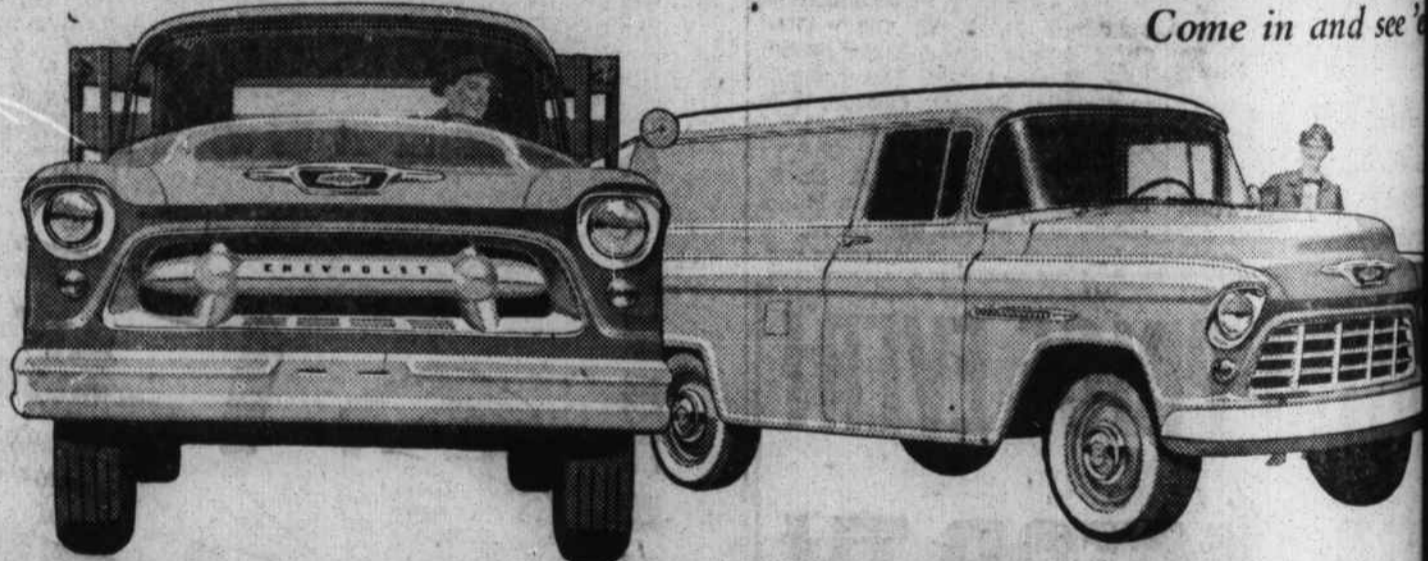
The services will be held Sunday at 11 a.m. and 8 p.m. and during the week at 9 a.m. and 7:30 p.m. and will continue through Sunday, April 24.

The pastor, the Rev. J. G. Goodwin, Jr., extends an invitation to the public to attend this series of

services which is in cooperation with the Simultaneous Revival of Baptist Churches of the Southern Baptist Convention.

Midweek Bible Study and meeting will be postponed one week due to the Study Course.

Services which is in cooperation with the Simultaneous Revival of Baptist Churches of the Southern Baptist Convention.



NEW CHEVROLET Task-Force TRUCKS

—with a whole truckload of new advantages for you! Here's what happens when America's No. 1 truck builder pulls out all the stops! Here are some of the new advances ready to work for you right now.

- Work Styling—a new approach to truck design!**
Two distinctively different styling treatments—one in light- and medium-duty models, another in heavy-duty!
- Six powerful new "high-voltage" engines!**
With a modern 12-volt electrical system for increased generator capacity—plus many other new advances.
- The last word in cab comfort and safety!**
New Sweep-Sight windshield for increased visibility. A new concealed Safety Step that stays clear of snow or mud.
- New capacity—up to 18,000 lb. G.V.W.**
Offered in 2-ton models! This means you can do a lot more work on heavy hauling jobs with real savings.
- New more durable standard-width frames!**
New frames are 1/2 inch wider to accommodate special bolt stallions. And they're more rigid!
- All models available with new Power Steering!**
New Chevrolet Power Steering cuts turning effort up to 80 per cent... cushions road shock. Optional at extra cost.
- You can have new Overdrive or Hydra-Matic!**
Overdrive is optional on 1/2-ton models; truck Hydra-Matic on 1/2-, 3/4- and 1-ton models at extra cost.
- Power Brakes standard on 1/2-ton models!**
This great power helper is yours at no extra cost on 2-ton models! Optional at extra cost on all other models.
- Tubeless tires standard on 1/2-ton models!**
New tubeless tires give you greater protection against a blowout... deflate more slowly when punctured!



WATKINS MOTOR COMPANY

DIAL GL 6-3893