

Fishing Regulations Listed Great Smokies Park

Following regulations for the Great Smoky Mountain National Park Service:

Season: Fishing is permitted from May 16 to August 31, from sunrise to sunset.

Closed Waters: All waters are open to fishing except those listed below: North Carolina; Chestnut; that part of Raven; all tributaries thereof from the Cherokee reservation boundary at Big Lick; All waters of the Great Smoky Mountain National Park from the mouth of Ramsey to the waters of Ramsey.

Restrictions in Certain Waters: All fish caught in the waterway in North Carolina shall be retained but caught in these waters carefully handled with hands and returned at once.

Use of Bait: Only permitted with only one lure with one hook.

Catch and Release: No fish less than 7 inches in length may be retained. All fish less than 7 inches in length will be carefully handled with hands and returned at once.

License: The National Fish and Wildlife Agency makes no charge for persons fishing within the park. The resident state license is required by Tennessee or non-resident or city license or permit issued by North Carolina.

The American Bowling Congress tournament, March 26 - June 5 at Fort Wayne, Ind., will have 5,826 teams shooting for \$430,000 in prizes.

The 90th Yale-Harvard crew race, America's oldest intercollegiate athletic rivalry, will be held June 17 on the Thames River in New London, Conn.

Johnny Michelsen, Pittsburgh's new head football coach, once received a letter addressed to John-nv Michael Olsen.

BOWLING

WAYNESVILLE WOMEN'S LEAGUE

The Friendly Bank moved into a tie for first place with Murphy Chevrolet in the Waynesville Women's Bowling League Tuesday night as the former team took two from Howell Motor while the latter was losing a pair to Welco Shoe.

In the third league match, Liner-Sheehan shut out Dayton Rubber. Cecil Elliott rolled a 211 to set a new season's record for the high individual game. She also had a 519 for the high individual series.

Welco Shoe posted both the high team game of 844 and the high team series of 2443.

HIGH TEAM SERIES	
Welco Shoe	2443
The Friendly Bank	2343
Murphy Chevrolet	2327

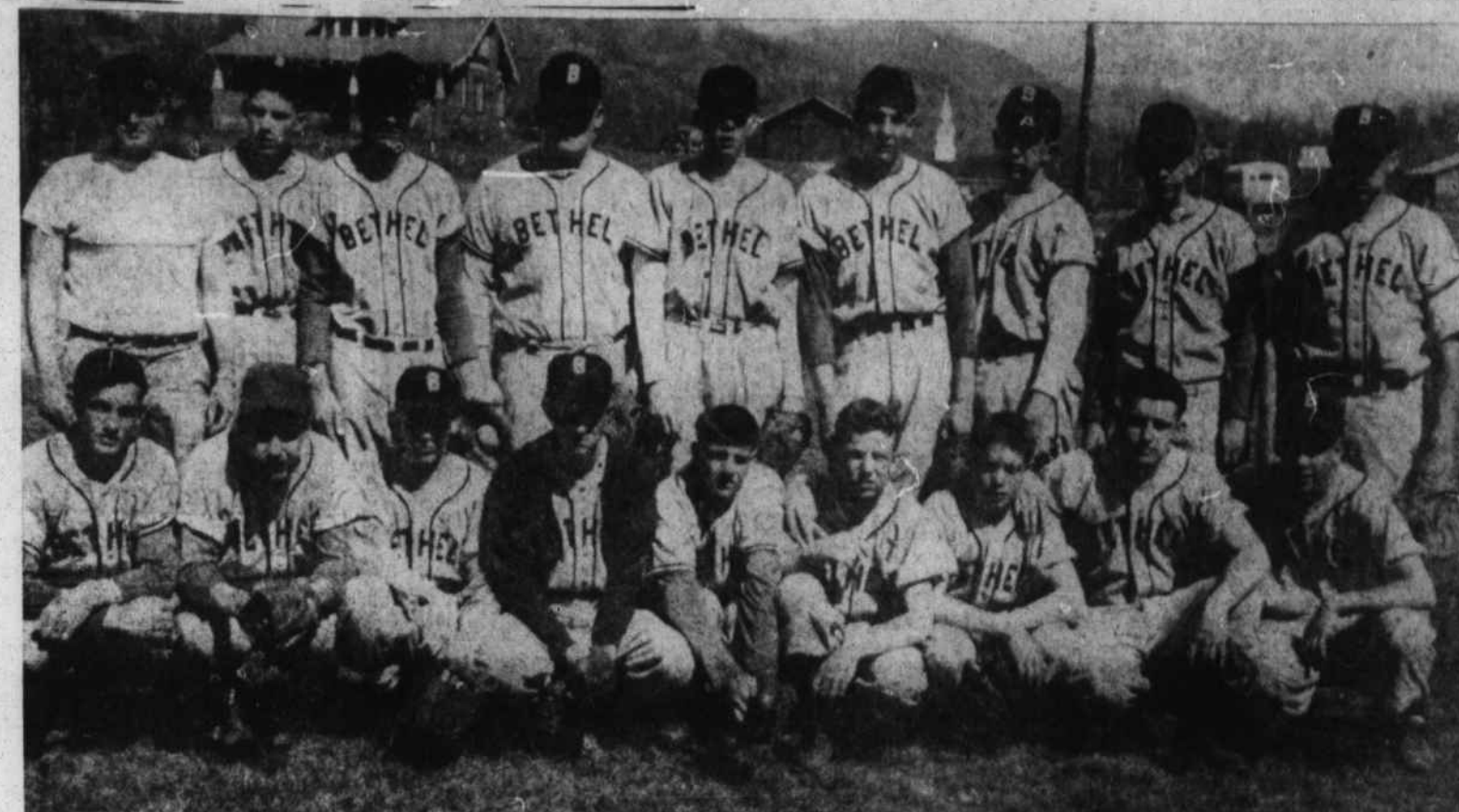
HIGH TEA MGAMES	
Welco Shoe	844
Murphy Chevrolet	808
Howell Motor	800

HIGH INDIVIDUAL SERIES	
Cecil Elliott	519
Lillian Carver	497
Mary Hamlett	473

HIGH INDIVIDUAL GAMES	
Cecil Elliott	211
Lillian Carver	194
Mary Hamlett	187

TEAM STANDINGS	
W	L
1. Murphy Chevrolet	28½ 13½
2. The Friendly Bank	28½ 13½
3. Welco Shoe	24½ 17½
4. Liner-Sheehan	21½ 20½
5. Howell Motor	14½ 27½
6. Dayton Rubber	8½ 33½

INDIVIDUAL AVERAGES	
1. A. Wyatt	142
2. M. Hamlett	142
3. M. Medford	140
4. M. Harrell	139
5. I. Yount	137
6. L. Carver	137
7. C. Elliott	134
8. R. Ray	134
9. D. Phillips	133
10. M. Martin	131



BETHEL'S BLUE DEMONS will invade Waynesville at 3 p.m. Friday for a second meeting with the Mountaineers. In the first meeting of the two baseball squads last week, WTHS won, 2-0. The BHS nine this season includes (front row, left to right) Roy Browning, Jack Phillips, Harold Queen, David Vance, Robert Capps, Wayne Ledbetter, Ray Warren, James Fore, and Billy Burress; (back row) Coach J. M. Carver, Billy Terrell, Clyde Duckett, Bill Singleton, Gerald Hill, Phillip Capps, Charles Neal, Gerald Owen, and Charles Stamey. (Mountaineer Photo).

Mountaineers Batter Sand Hill Comets, 18-7; Bethel Blue Demons Here Friday Afternoon

The Waynesville Mountaineers chalked up their third straight victory on the diamond here Tuesday by flattening Buncombe County's Sand Hill, 18-7.

The visitors hit two home runs to the Mountaineers' one, but the Waynesville battery got 20 hits off Sand Hill pitcher Ball, while Bobby Ballance only gave up nine safeties on the mound for the Gold and Black. Ballance, Robinson, Stevens, and Roberson each got three hits for Waynesville.

WTHS was charged with three errors, the Comets with five. Ahead by only one run in the third inning — at 5-4 — the Mountaineers broke the game wide open with seven runs in the fourth inning on a walk, two errors, singles by Robinson, Davis, Ballance, Stevens, Roberson, and a double by Robinson.

The highlanders added two more in the fifth inning on singles by Ballance and Hill and a double by Stevens.

Four more Waynesville runs came in the sixth inning when Medford was safe on an error. Ezell singled, Ballance doubled, and Roberson slammed the ball over the fence.

Waynesville's early runs were scored in the first inning on singles by Byrd, Robinson, Stevens, Roberson, and Muse, which produced three runs — and in the second inning on a single by Wright, a triple by Byrd, and an error — good for two runs.

Sand Hill's two homers were hit by Penland in the second inning with nobody on and by Fowler in the third with Brinkley aboard.

Blue Ridge Track Meet Slated May 6 Spring Championship Race Set Sunday At Darlington

The annual Blue Ridge Conference boys track meet will be held at Asheville School Friday, May 6, according to C. C. Poindexter of Bethel, conference secretary.

Each school will be permitted to enter two contestants in each event except the relay.

A list of entrants in the meet must be sent to Coach H. B. Arbogast at Asheville School not later than midnight Tuesday, May 3.

A championship trophy will be awarded and winners of the first four places in each event will be given ribbons.

The track meet will include such events as 100-yard dash, 220-yard dash, 440-yard run, half-mile run, mile, 120-yard hurdles, 220-yard low hurdles, pole vault, high jump, broad jump, shot put, discus throw, football throw, baseball throw, football punt, and four-man relay.

Michigan hunters and trappers were paid \$67,200 during 1954 as bounties on 3,715 coyotes, 23 wolves and 627 bobcats, reports the state conservation department.

Smoky Mtn. DRIVE-IN THEATRE

Balsam Rd. Dial GL 6-5446 Show Starts At 7:30 P. M.

THURS. & FRI., APRIL 21 & 22
"FOUR GUNS TO THE BORDER"
 (In Color)
 Starring RORY CALHOUN COLLEEN MILLER WALTER BRENNAN — ALSO — 5 COLOR CARTOONS

SATURDAY, APRIL 23
DOUBLE FEATURE!
"THE COWBOY AND THE LADY"
 Starring GARY COOPER MERLE OBERON — ALSO — "FIGHTER ATTACK" (In Color) Starring STERLING HAYDEN JOY PAGE J. CARROL NAISH — Color Cartoon —

SUN. & MON., APRIL 24 & 25
"THE BOUNTY HUNTER"
 (In Color) Starring RANDOLPH SCOTT

PARK Theatre Program
THURSDAY, APRIL 21
"PRINCESS OF THE NILE"
 (In Color) Starring DEBRA PAGET JEFFREY HUNTER MICHAEL RENNIE

FRIDAY, APRIL 22
DOUBLE FEATURE
"THE STEEL CAGE"
 and **"CRAZY KNIGHTS"**
 Starring BILLY GILBERT SHEMP HOWARD MAXIE ROSENBLUM

SATURDAY, APRIL 23
"MARSHALS IN DISGUISE"
 A Wild Bill Hickock Adventure Starring GUY MADISON ANDY DEVINE

WAYNESVILLE DRIVE-IN THEATRE

Show Starts At 7:45
THURSDAY, APRIL 21
SUSPENSE THAT HOLDS YOU ON THE RAZOR EDGE OF TERROR!
CRY VENGEANCE
 AN ALIEN ARTISTS PICTURE with MARTHA HYER SKIP HOMEIER · JOAN VONS

ALSO
HERE COMES U. S. MARSHAL "ROCKY" LANE
RIDIN' HARD AND FAST ON THE TRAIL OF LAND-GRABBERS!
"The Marshal of Cedar Rock"

FRIDAY, APRIL 22
Thrill After Thrill!
"CHALLENGE THE WILD"
 FILMED IN THE PRIMITIVE WILDS OF ALASKA!
 SEE Count Kukul, Cliff, Belling, Chagaz, Elting, Giddens, Moore, Carlson, Dyer, Leasing, Galloway, See Linn, The Great Blue Whale, and countless thrills of nature.

STRAND THEATRE
Thursday, April 21
DANA ANDREWS PIPER LAURIE
 IN **"SMOKE SIGNAL"**
 In Technicolor

Friday, April 22
 SEE **"MA & PA KETTLE AT HOME"**
 WITH **MARJORIE MAIN PERCY KILBRIDE**

SATURDAY, APRIL 23
"JAIL BAIT"
 Starring **LYLE TALBOT DOLORES FULLER**
 ALSO
 Cartoon, Comedy, and Last Chapter of "Riding With Buffalo Bill"

Sun. - Mon. - Tues. April 24 - 25 - 26
3 Great Days To See
"THE SEVEN BRIDES FOR SEVEN BROTHERS"
 You'll see the funniest six shot-gun weddings ever staged by Cupid.
CINEMASCOPE & COLOR
JANE POWELL & HOWARD KEEL
 You'll be carried away, too!

RAW PANIC...THE SCREEN HAS NEVER DARED REVEAL!
TARGET EARTH
 RICHARD DENNING · KATHLEEN CROWLEY · VIRGINIA GREY

SUNDAY - MONDAY - APRIL 24-25
"SEVEN BRIDES FOR SEVEN BROTHERS"
 You'll see the funniest six shot-gun weddings ever staged by Cupid.
CINEMASCOPE & COLOR
JANE POWELL & HOWARD KEEL
 You'll be carried away, too!

REPORT OF CONDITION OF First State Bank

at Hazelwood in the State of North Carolina at the close of business on April 11, 1955.

ASSETS	
Cash and other banks, including reserve	\$286,871.84
U.S. and cash items in process of collection	190,398.66
Government obligations, direct	5,000.00
U.S. States and political subdivisions	394,902.88
Discounts	12,926.10
Loans owned \$7,268.00, furniture and	1,255.67
Real estate	\$891,355.15
Other assets	
LIABILITIES	
Deposits of individuals, partnerships,	\$497,128.52
Deposits of corporations, partnerships,	249,360.45
United States Government (including postal savings)	3,449.03
U.S. States and political subdivisions	79,536.78
U.S. (certified and officers' checks, etc.)	1,118.59
DEPOSITS	\$830,593.35
Other liabilities	2,780.01
LIABILITIES (not including subordinated	
debts shown below)	\$833,373.36
CAPITAL ACCOUNTS	
Surplus	\$ 25,000.00
Reserve	25,000.00
Profits	7,355.79
CAPITAL ACCOUNTS	\$ 57,355.79
LIABILITIES AND CAPITAL ACCOUNTS	\$891,355.15

The capital consists of: \$25,000.00 in stock with total par value of \$25,000.00.

MEMORANDA
 I, J. B. Smith, Cashier of the above-named bank, do solemnly swear that the above statement is true, and that it fully and correctly sets forth the true state of the several matters contained and set forth in the above statement to the best of my knowledge and belief.



SAFETY PAYS
WORK SHOES with heavy leather soles can prevent many accidents on home paint jobs, says the Institute for Safer Living of the American Mutual Liability Co. of Boston. Rubber soles, except for roof work, are likely to slip on ladders and scaffolds.