

PUBLISHED EVERY MONDAY

The Mountaineer's

PUBLISHED EVERY MONDAY

Farm Review and Forecast

Commissioner Ballentine To Be Speaker At Tobacco Field Day Here August 23

L. Y. Ballentine, commissioner of agriculture, will be the principal speaker at a burley tobacco field day to be held at the Mountain Research Station, Waynesville, Tuesday, August 23.

The field day, to begin at 2 p.m. and end at 5 p.m., will present the latest information on burley tobacco developed and tested by the Agricultural Experiment Station, according to R. R. Bennett, extension tobacco specialist, M. R. Whisenant, superintendent of the Waynesville station, will welcome farmers, businessmen and other interested persons to the program.

In addition to Ballentine, Dr.

Brice Ratchford, assistant director of the State College Agricultural Extension Service, and Dr. W. E. Colwell, assistant Experiment Station director in charge of tobacco research, will speak.

Among the presentations will be a demonstration of humidifying equipment used to bring tobacco in order in the strip room; effects of varied rates of manure, nitrogen, phosphate and potash and varied spacing in the row; high analysis fertilizer and method of application and loss of nutrient from manure; time of topping and chemical sucker control; effect of quality of transplant on field performance; and wildfire, blue mold and black shank control.

Scientists and specialists to present the research program are Dr. Luther Shaw, USDA agronomist; Bennett, S. N. Hawks, Jr., H. H. Nau, all tobacco specialists, and F. A. Todd, tobacco plant disease specialist, all of the State College Extension Service.

Three Farm Tours Are On Schedule

The schedule for the community tours this week is as follows:

Tuesday, Aug. 16th, Thickety visits Upper Crabtree.

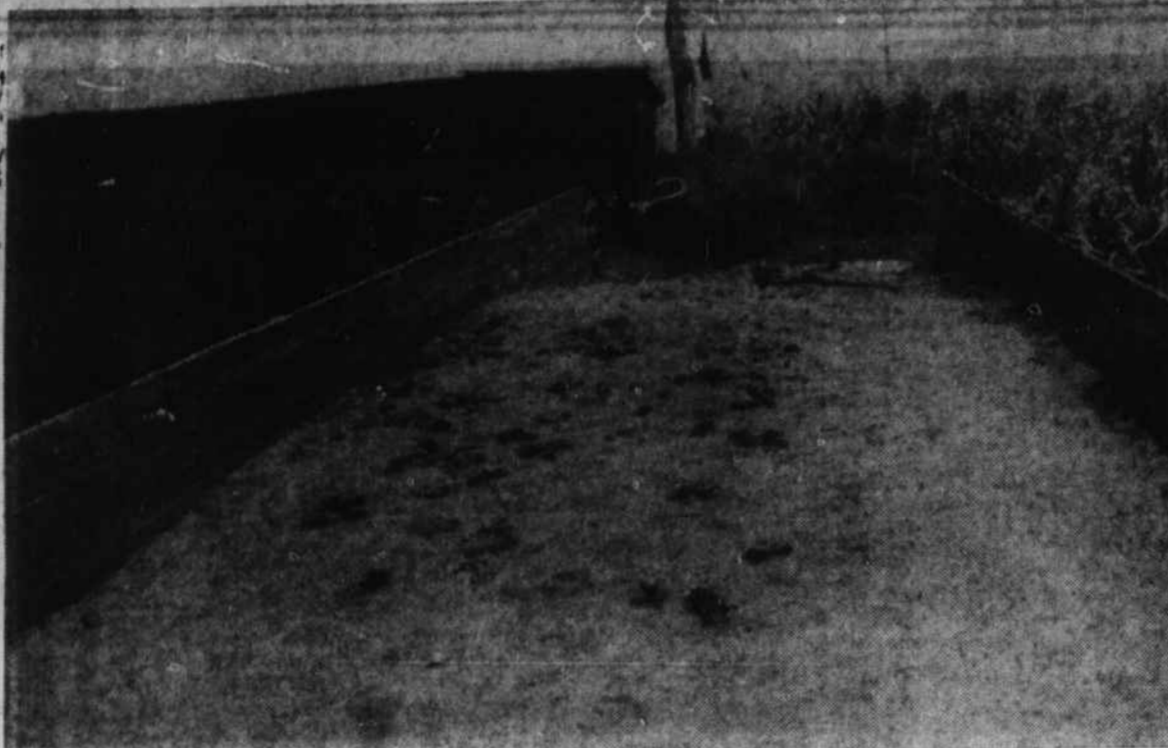
Wednesday, Aug. 17th, Francis Cove visits Ratcliffe Cove.

Saturday, Aug. 18th, White Oak visits West Pigeon.

SILO BLOCKS

This is a special message to our alert farmers in Western N. C. You can buy 1350 blocks to build a silo 12 feet in diameter, 30 feet high for only \$297.00.

Call 6247 or Visit PLEMMONS CONCRETE PRODUCTS CO. In Canton for Additional Information



BUNKER SILOS, such as this one on the farm of B. F. Nesbitt of Crabtree, are the most economical form of semi-permanent silos. A layer of sawdust over paper protects a load of alfalfa in this silo. Capacity of the unit is in excess of 100 tons. (Mountaineer Photo).

Condition Of Crops Favorable

(By State Department)

TOBACCO

Generally, the tobacco crop is reported to be in mostly good to very good condition. There were only a few reports of only fair condition this week.

CORN

The condition of the corn crop improved somewhat during the week and is reported to be in mostly good to very good condition.

HAY CROPS

The condition of current hay crops is unchanged from a week earlier and is still reported as mostly fair to good. There were a few reports of good coming from the mountain counties where hay making operations are in full swing.

IRISH POTATOES (LATE)

The late Irish potato crop is still reported in good condition. The crop made excellent growth during July, and harvesting operations are expected to get under way in the near future.

The honey flow from sour wood this year was the first honey flow in June for at least seven years or since such records on bee colonies have been kept at State College.

Home Barbecue Pits Boost Broiler Sales

The versatile, home barbecue portable cooking pits have helped boost broiler sales, says C. P. Libeau, extension poultry marketing specialist at State College.

But the local broiler industry itself can help gain deeper and wider markets and increase sales, he emphasizes. Here are some of the things that Libeau thinks broiler processors and feed dealers can do to promote broiler consumption:

1. Devise and adopt methods of encouraging families to get a portable barbecue designed for barbecuing chickens.
2. Make outdoor broiler barbecues universally popular but start first at home, in the community, county and state.
3. The family type barbecue stands could be used as tie-in sales with broilers, other poultry, and outdoor equipment.
4. Encourage and promote the use of portable barbecue stands as gifts. Gifts of these stands might be encouraged even at Christmas. This should help to prepare for bigger and better broiler sales and more agricultural income for North Carolina in 1956.

Farmers lose about \$13 billion a year to plant diseases.

Test Farm Cow Sets High Record

A registered Guernsey cow Quail Roost Bright Chene, owned by Mountain Experiment Station, Waynesville, produced 10,368 pounds of milk and 510 pounds of fat. This production represents approximately 4883 quarts of high-quality milk. This is according to the official Herd Improvement Registry record released by the American Guernsey Cattle Club.

"Chene" was a ten-year-old and was milked two times daily for 305 days, while on test. "Chene" is the daughter of the famous Guernsey sire, Bournedale Bright Star, that has 32 sons and tested daughters in the Performance Register of the American Guernsey Cattle Club.

This record was supervised by North Carolina State College.

FARE COLLECTED
PETERSBURG, Va. (AP) — Cathy Goodman, a 4-year-old, didn't need a bus fare. But she had a token and the doctores collected it. She almost swallowed the token — which lodged in her throat.

Egg-Holding Room Aids Poultryman

A good egg holding room will help you to deliver better quality eggs to your market. You may ask does temperature affect egg quality? Yes, the temperature of your egg holding room can and does affect the quality of eggs you sell.

Experimental work has shown that if the temperature of the holding room is maintained at 60° F. with a humidity of 80 per cent the eggs will be of top quality at the end of one week.

A study of the egg production and handling practice was made each month on twenty farms for one year in Michigan. The things which affected egg quality most were: (1) number of times eggs were gathered; (2) how they were cooled; (3) how they were cleaned; (4) how often the eggs were marketed; and (5) the temperature and humidity of the egg room. Every poultry raiser knows that egg care is important, especially during warm weather; but let's keep in mind that if eggs are to reach the consumer as top quality they should be collected four to five times a day, cooled quickly, and kept in a cool moist place until sold.

The temperature at which hatching eggs are held prior to setting can affect hatchability. Test work has found that eggs held at 55° F. for fourteen days hatched 78 per cent while eggs held at 75 to 85° F. hatched only 55 per cent. That's a difference of 23 more chicks out of each one hundred eggs set. Just think what that is worth to a hatcheryman. The value for the extra chicks that hatched from 100 eggs held at 55° F. prior to incubation would amount to \$3.45 over those held at 75 to 85° F.

Good hatching eggs also would mean less overhead less labor, and less incubator space. If every producer had a good management program, the hatcheries would be able to save more for eggs. From a flock of 500 hens that averaged 15 dozen eggs per bird for the year, a producer would receive \$150 more labor return if a premium of 2 cents per dozen was paid for good hatching eggs.

Let's produce and sell clean eggs of high quality to our hatcheries and markets.

REMEMBERS

1. Cull the "star boarders". Keep the flock laying 50 per cent or better.
2. Be sure to vaccinate for

State College Answers Timely Farm Questions

QUESTION: When should I plant shallots?

ANSWER: No earlier than September 1. The Experiment Station has found that by planting late, growers can be fairly certain temperatures will be low enough and days short enough to result in normal vegetable growth.

QUESTION: What is the ideal temperature to keep laying hens?

ANSWER: Around 55 degrees. At this temperature hens lay the most eggs and consume less feed per dozen eggs, than at any other temperature.

QUESTION: Is wheat grown on acres in excess of farm allotments subject to quota penalties even if it is fed on the farm?

ANSWER: Yes, unless the total wheat production on a farm does not exceed 15 acres.

QUESTION: How can I regulate the amount of protein supplement my cattle eat?

ANSWER: Scientists have found that loose salt with cottonseed meal or mealworm mixtures can be used to hold daily consumption of protein supplements to the desired level.

QUESTION: How can I keep

POX between the ages of 8 to 14 weeks.

3. Feed and water the pullets for well developed birds. Keep feeders and waterers in the shade.

4. Provide good ventilation for confined birds, especially on hot days.

5. Guard against disease and parasites in your pullets.

6. Provide and use an approved egg holding room. Cool eggs help you sell quality eggs.

birds away from my farm.
ANSWER: John H. ... charge of extension ... says that spreading ... over the fruit or ... they "come into produ ... best system he has found

Horses have been ... creasing in North ... Western Europe in ... but show increases in ... Union and Eastern Europe



SPARTAN SPECIAL

16% • 18% •
DAIRY FEED
Now better than Spartan Special Dairy have "fines" all packed no sifting or separating. Cows love extra richness, extra bulkiness, good taste!

Here are feeds built to produce... priced to...
PARTON FEED STORE
420 Depot St., Waynesville

"Your 'SQ' Feeds"

Let Us Put Your

TRACTOR IN A-1 CONDITION

For Summer and Fall Work —

NOW Is The Time For Tractor Repairs, Tune-ups or Overhaul —

- EXPERT MECHANICS WITH YEARS OF EXPERIENCE.
- GENUINE FORD TRACTOR AND DEARBORN EQUIPMENT PARTS.

Dearborn EQUIPMENT Pick-up and Delivery Service **Ford TRACTOR**

Rogers Tractor Co.
Dial 3944 Clyde, N. C.

We've got em!

PURINA RANGE CHECKERS with STILBESTROL

...for feeding steers on grass

Feed Checkers with stilbestrol on pasture for additional gain and finish. See us right away.

CLINE - BRADLEY CO.
5 POINTS Joe Cline - Dick Bradley HAZELWOOD

Imagine! a Maytag

Only \$139.95

You can buy a genuine Maytag for scarcely more than you'd pay for the lowest-priced washer!

Low down payment Liberal trade-in

ROGERS ELECTRIC CO.
DIAL GL 6-6351 MAIN STREET

They're Green ...and Red!

Believe it or not... we have hens in our store producing eggs with green and red yolks. We do it by adding dye to the feed — just to show you that what your hens eat does make a difference in their eggs. Come in and see these surprising eggs — any time. Our regular Purina Laying Chows, of course, make only eggs with nice yellow yolks — and lots of 'em. A test will quickly show you the top egg production Purina makes.

CLINE-BRADLEY CO.
5 Points Hazelwood

SEE IT SOON...

Announcing... the Dearborn FORAGE HARVESTER

"Summer-fresh" feed... all year 'round!

Livestock thrives when there's rich, wholesome feed available all through the year. The Dearborn Forage Harvester helps you harvest that kind of feed — captures the valuable nutrients in your forage crops.

Big Capacity—Smooth Working

Whether you're cutting hay or silage crops, the Dearborn Forage Harvester gets more done because it's built with plenty of capacity—handles up to 15 tons of silage or 6 tons of dry hay per hour. And you'll appreciate the ease with which you can operate this machine. Controls are convenient to the tractor seat. But with all its capacity, operating convenience and durability, it's a rugged machine, priced low to save you money.

For Hay or Row Crops

Easily interchangeable row crop attachment and hay pick-up are sold separately for the Dearborn Forage Harvester... you buy only what you need.

PTO or Engine Drive

Choose either the standard Power Take-Off or dependable 31-horsepower engine model.

If you have use for forage, you'll like the Dearborn Forage Harvester! See it soon.

ROGERS TRACTOR CO.
Clyde, N. C. Dial 3944

We'd Like To... WELCOME

Bill Aydelotte

You'll Hear Him

12:00 Noon — "Noonday News"
1:05 p.m. — "Mountain Music"
6:15 p.m. — "Music in Motion"
7:00 p.m. — "Final News Edition" every

MONDAY — FRIDAY

GANGWAY GIRLS!

Bill's Back In Town!

Young Good-looking Single Good voice Expert pronouncer Good mike technique Sounds good on radio

970 **WWIT** 970

MORE CHEFS AND COOKS CHOOSE

THAN ALL OTHER MEANS OF COOKING

That's the secret of their success. They know that depend on GAS in all kinds of weather for safe, clean, heat that is necessary for meals that "melt in your mouth."

"The Best Costs Less"

For Real Service Anywhere,
Call GL 6-5071

MOODY RULANE,

902 N. Main St.