

# Go To Church Sunday

## First Baptist Church HAZELWOOD, N. C.

The Rev. John Ivan Kiser, Pastor

**SUNDAY—**  
Sunday School—9:45 a.m., Talmadge Woodard, Superintendent. There is a welcome here for all ages.

Morning Worship — 11:00 a.m. Sermon by the pastor. Subject: "The Sacredness of Marriage". This service will be broadcast over WHCC.

Training Union — 6:30 p.m., Frank Saunders, Director.  
Evening worship — 7:30 p.m. Sermon: "The Christian's Challenge," by the pastor.  
Youth Fellowship — 8:30 p.m., Barbara Chase, director.

**Announcements and Activities**  
Sunday is Promotion Day for Sunday School and Training Union.  
Monday—Deacons Meeting—7:30 p.m.

The Nursery will be open for all services Sunday.

Wednesday: 7:30 p.m. — Weekly Bible Hour.  
Weekly Choir Practice will follow.

Thursday—Executive committee of the Brotherhood will meet at 7:30 p.m.

Visitors are always welcome to worship with us here. A hearty welcome awaits you. You are not a stranger, but a guest of God in His house of worship.

## Rocky Branch Missionary Baptist Church

The Rev. W. G. Rhinehart, Pastor

**SUNDAY—**  
10 a.m.—The church studying. Leonard Bryson, Sunday School Superintendent.

11:00 a.m.—Worship Hour.  
7:00 p.m.—The Church Training members. Tom Massie, Training Union Director.

**TUESDAY—**  
7:30 p.m.—W.M.S. meets at the church.

**WEDNESDAY—**  
7:30 p.m.—The Church praying. If you do not attend church somewhere we invite you to come and worship with us.  
"I was glad when they said unto me, Let us go into the House of the Lord."—Psalm 122:1.

## Hazelwood Methodist Charge

The Rev. L. E. Wiggins, Pastor

THE HAZELWOOD CHURCH

**SUNDAY—**  
10:00 a.m.—Morning Worship.

11:00 a.m. Sunday School, W. J. Nichols, Supt.

**THE FRANCIS COVE CHURCH**

**SUNDAY—**  
10:00 a.m.—Church School, R.H. Boone, Supt.

11:00 a.m.—Morning Worship.

There were 1,364,000 U. S. college students in 1939 compared to 2,475,000 in 1954.

## Sing Set Sunday At Antioch Church

The singing convention of the Antioch Baptist Church will hold its regular meeting at 2 p.m. Sunday.

All singers are invited. The convention meets the fourth Sunday of every month.

## Bethel Methodist

"Bethel on the Pigeon"

The Rev. L. B. George, Minister



Church School at 10 o'clock. M. C. Nix is the general supt. There are classes for all age groups. You are invited to the group of your interest.

11:00—Morning worship.  
A very hearty welcome awaits you at the worship service. The services are informal and should meet the needs of all who wish to come.

7:30—Youth meeting. A period of worship and fellowship. All youth of the church are asked to the meeting.

Boy Scout Troop No. 12 will meet at the church Monday at 7:00 o'clock.  
Choir rehearsal Wednesday evening at the church at 7:30. All members of the choir are invited to the rehearsals. Miss Maud Worley is the director.

## First Baptist Church WAYNESVILLE

The Rev. T. E. Robnett, Pastor



Along Christ's Highway You'll Find the Flowers of Brighter Hue, the Songs More Restful at Eventide.

"TO LIVE IS CHRIST"  
Phil. 1:21

**SUNDAY—**  
9:45—Sunday School. There is a place and a welcome here for those of all ages. Mr. Glenn W. Brown is superintendent.

9:45 to 12:00—The Nursery is open.

11:00—Morning worship. Sermon, "A Prayer for Cleansing," by the pastor. Music under the direction of Charles Isley.

6:45—Training Union.

8:00—Evening worship. Sermon, "Our Distinguishing Mark," by the pastor.

**MONDAY—**  
2:45—Sunbeams meet at the church.

7:30—Y.W.A.'s meet with Mrs. Wayne Edwards.

7:30—Intermediate G. A's. meet at the parsonage.

7:30—Intermediate R. A's. meet at the parsonage.

8:00—Ruth Sunday School Class meets.

**WEDNESDAY—**  
3:30—Junior G. A's. meet at the church.

7:30—Midweek Prayer Service.

8:15—Youth and Senior Choir rehearsal.

**Riverside Baptist Church**

The Rev. Paul Grogan, Pastor

**THURSDAY—**  
7:30 p.m.—Lesson Study for teachers taught by Lynn Chambers.

**SUNDAY—**  
10:00 a.m.—Sunday School. Paul Erwin, Superintendent, in charge.

10:45 a.m.—Junior Choir sings. Edgar Burnette, director.

11:00 a.m.—Sermon by the pastor.

7:00 p.m.—Training Union. Edgar Burnette, director, in charge. Invitation to everyone is extended. Training groups for all ages are available. Also a Bible Class.

7:45 p.m.—General Assembly Program with the Adult Group in charge.

**TUESDAY—**  
7:30 p.m.—Prayer meeting at the church with the pastor in charge.

8:00 p.m.—Choir practice. Junior Sorrells, Chorister.

**THURSDAY—**  
9:00 a.m.—W.M.U. Quilting. Mrs. J. P. Ledbetter, hostess. Covered dish luncheon at the noon hour will be served.

**Richland Baptist Church**

The Rev. Edgar Wilcox, Pastor

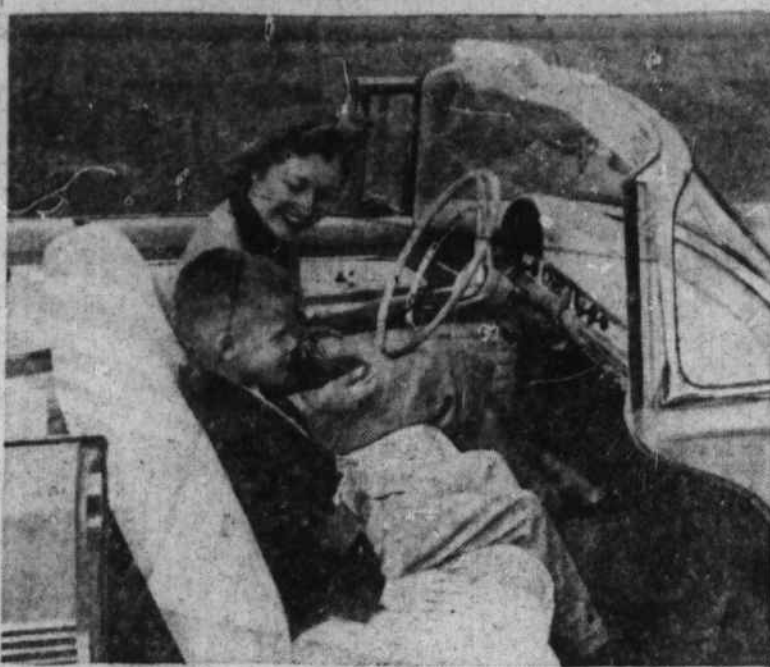
**SUNDAY—**  
10:00 a.m.—Sunday School. Allie Moore, Supt.

11:00 a.m.—Morning Worship. Sermon by the pastor.

6:45 p.m.—Training Union. Everett Cutshaw, Director, and Roy Parton, Associate Director.

7:45 p.m.—Evening Worship.

**WEDNESDAY—**  
7:00 p.m.—Prayer meeting and Bible Study.



**LIFEGUARD DESIGN**—A mother makes sure that her son is securely seated in a 1956 Ford Sunliner. The new Fords, which will be shown to the public Friday (September 23) incorporate five safety features in a "lifeguard design" intended to reduce chances of accidental injury. On all new Fords, safety-designed steering wheels, door latches and rear view mirrors are standard equipment. Wheels are designed to absorb force if the driver is thrown forward, reducing the chance his chest might strike the steering column hub. Safety door latches (lower left) will resist crash impact, and help keep passengers inside the car where they are twice as safe, according to research figures. Mirrors have a special backing to help prevent shattering. Optional seat belts will withstand up to 4,000 pounds of force. Optional crash cushions for instrument panels and sun visors will provide added protection if a passenger is thrown forward.

## Dellwood Methodist Charge

The Rev. Grady Barringer, Pastor

DELLWOOD

**SUNDAY—**  
10:00—Morning Worship. Sermon by the pastor.

11:00—Church School. Taylor Ferguson, superintendent.

**TUESDAY—**  
7:30—Adult Choir practice.

**ELIZABETH CHAPEL**

**SUNDAY—**  
10:00—Church School. Jack Arrington, superintendent.

7:30—Evening Worship. Sermon by the pastor.

**WEDNESDAY —**  
8:15—Choir practice.

## MAPLE GROVE

**SUNDAY—**  
10:00—Church School. Leonard Leatherwood, superintendent.

11:00—Morning Worship. Sermon by the pastor.

**WEDNESDAY—**  
7:30—Youth and Adult Choir practice.

## New Ford On Display Here Friday

Safety features offered for the first time by any automobile company, power equal to the Thunderbird, and lower body silhouettes are available in the 1956 Ford cars which 6,800 Ford dealers place on display here tomorrow.

The new Fords will be built in four series offering 18 body styles—two more than in 1955. They are available in 13 solid exterior colors, or 21 two-tone combinations.

A "Thunderbird Y-8" engine leads the power selections available for 1956. It is installed on Fairlane and Station Wagon models, and develops 202 horsepower for Fordomatic, or 200 hp for overdrive or standard transmission. Customline and Mainline Fords offer a Y-8 engine developing 176 hp for Fordomatic, or 173 hp for overdrive or conventional drive. Also, the economical Ford six, increased to 137 hp, is available on all models with all transmission types.

Ford safety research, coupled with studies of medical groups, led to development of a "lifeguard design" in 1956 models.

New door latches give added protection against the chance that doors may open under impact. They have been proved in full scale crash tests at Dearborn, Mich.

To keep the driver's chest from hitting the steering column in a crash, the new three-spoke Ford steering wheel has its center hub released 3 1/8 inches below the wheel rim.

Rear view mirrors have a special backing designed to prevent shattering.

Front and rear seat mountings have been strengthened so they will resist greater impact.

In addition, Ford offers two optional safety devices. Seat belts, designed to withstand pull up to 4,000 pounds, will help to hold occupants inside cars, and to prevent forward motion. Foam plastic padding for instrument panels and sun visors will help to absorb impact if a person is accidentally thrown forward.

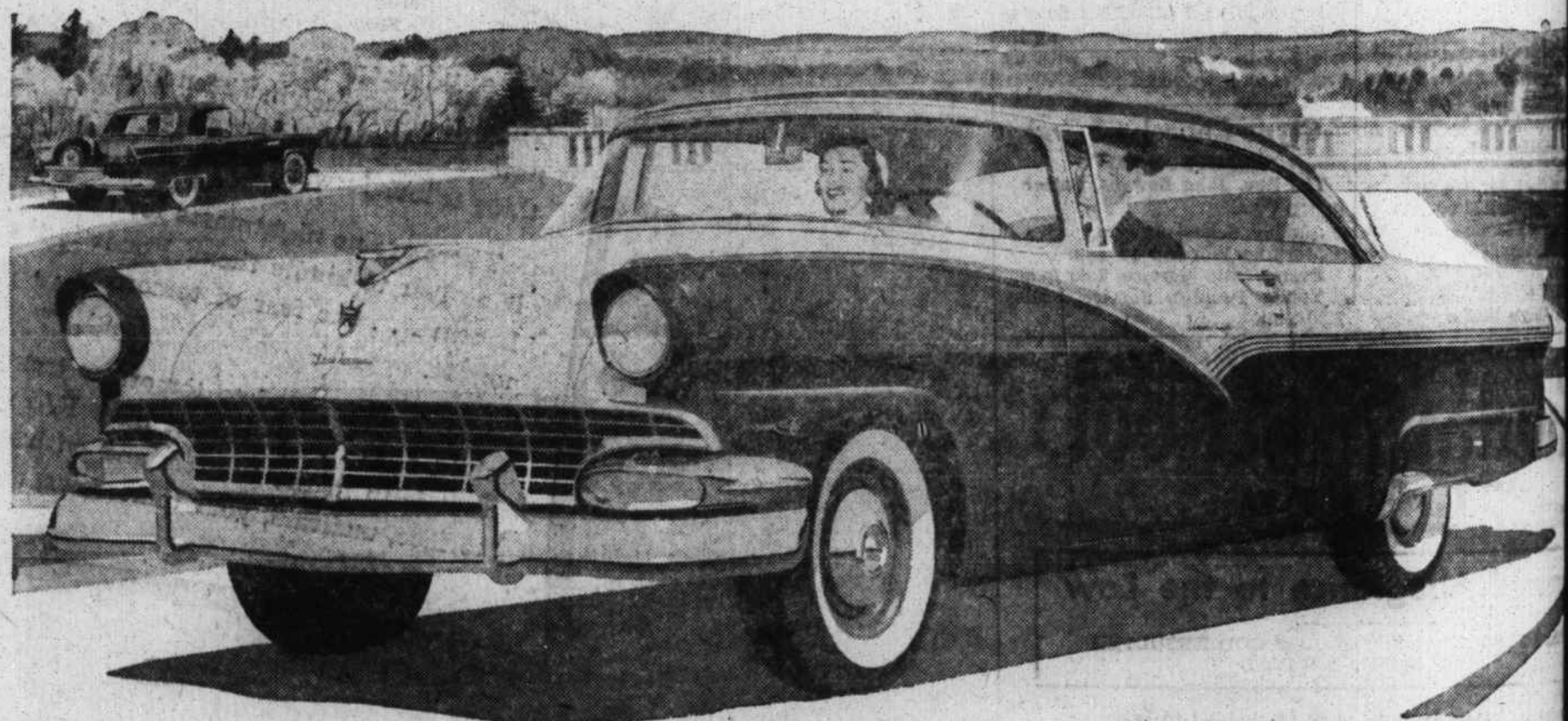
Styling advances in the Ford for '56 include a new grille with oblong parking lights at the outer ends, set in frames which wrap around the fender sides. Body side molding is restyled for Fairlane, Station Wagon and Customline models. Restyled tail lamps and deck lid handles, a larger recessed hood ornament, and a completely new instrument panel are offered in all models.

The 1956 Victoria is 1 1/2 inches lower than the comparable 1955 model. Two door and four door sedans also have new tops reducing total car height almost a full inch. However, headroom was not reduced since the contour change is mostly along the top's center line, and fabric headlinings are installed closer to the steel top.

In addition to the line is the Parklane Station Wagon, a two door car which offers an eight by five-foot load space with talegate extended. It is fitted inside with deluxe upholstery and trim combinations, and has special bright metal trim inside and outside. Early in the model year, Ford will start production of a new four door Victoria style in which side pillars have been eliminated to provide all-around vision.

Optional convenience and comfort features in the 1956 Fords include power steering, as well as power-operated brakes, seats, and window lifts. Air conditioning, fresh air heaters, and tinted safety glass are available. This year Ford offers a signal-seeking radio which automatically selects new stations. A dual-range automatic control adjusts the set for city or country listening.

# Here Friday! NEW '56 FORD! The fine car at half the fine car price!



## With new 202 h.p. Thunderbird Y-8

New 202-h.p. Thunderbird Y-8 engine is available in Fordomatic Fairlanes and Station Wagons. In Fordomatic Customlines and Mainlines you can have the 176-h.p. Y-8. And Ford's new 137-h.p. Six is available in all 18 models.

## ...with new Thunderbird styling



The new '56 Ford looks like the Thunderbird! You'll find the same graceful lines... the same long, low silhouette... the same dashing appearance... styling which helped the fabulous Ford Thunderbird to win America's heart.

## ...with new Lifeguard Design

For '56, Ford brings you the greatest safety news in a generation... Lifeguard Design. In cooperation with universities, medical associations and safety experts, Ford learned the cause of most serious injuries in accidents. To provide extra protection against these hazards Ford developed the new Lifeguard features described at right.

But there is still more wonderful news! Ford brings you Thunderbird power in a modern deep-block Y-8... Thunderbird beauty, too... rich new interiors... quality throughout.

See it... try it... you'll agree the '56 Ford is the fine car at half the fine car price.



Ford's new Lifeguard features are: a new deep-center design steering wheel, to act as a cushion in event of accident... double-grip door locks to reduce chance of doors opening under shock... optional padding for control panel and sun visors to help lessen injuries... optional seat belts to help keep occupants in seats.

Come in... See the  
new '56 FORD  
Friday

# PARKWAY MOTORS, Inc.

Miller & Haywood Streets

Waynesville

## For LOW COST CONTROL of PLANT BED WEEDS and NEMATODES... CYANAMID + A SOIL FUMIGANT

It's Easy as A-B-C—



A. Work up seed bed and apply soil fumigant.



B. Apply Cyanamid at recommended rates.



C. In the spring, rake, fertilize and seed as usual.

## ADVANTAGES OF AERO® CYANAMID FOR TOBACCO BED WEED CONTROL

1. Eliminates costly, back-breaking, hand weeding.
2. Supplies long-lasting nitrogen.
3. Produces stronger, healthier plants that grow off faster in the field.



ASK FOR  
FREE LEAFLET

REMEMBER—CYANAMID plus a soil fumigant is the lowest-cost way to control weeds and nematodes in plant beds. See your dealer and place your order today.

AMERICAN Cyanamid COMPANY

AGRICULTURAL CHEMICALS DIVISION

16 West Martin St., Raleigh, N. C.