

Annual Haywood Farm Census Shows Increases In Crop Production

Beef Totals Decline

Commercial fertilizer, 4,109 tons, (3,913 tons); all silage made, 21,384 (total for 1953 not listed), and all pulpwood cut, 7,397 tons, (1953 total not listed).

Sows and gilts for breeding, 176, (124); dairy cows, 4,440, (5,026); beef cattle, 7,807, (8,436); hens and pullets of laying age, 67,046, (60,873).

All people living on farm tracts, 12,943, (13,077).

Comments made in the annual report on the farm census were: "According to the January, 1955 Farm Census Survey, no noticeable changes were reported over the previous year in the 173,936 acres of farm land, except the transfer of about 11,000 acres of wood land from unimproved open pasture to all other land such as: woods, waste and non-farm land.

"A slight increase in harvested acreage was reported in corn, oats, lespedeza, alfalfa and other crops, including orchards, vineyards and home gardens. A decrease in the number of milk and beef cows was reported on farms as of January 1, 1955 compared to a year ago. Other items listed by farmers of the county were: 7,397 cords of pulpwood cut and 21,384 tons of silage made in 1954. The number of people reported living on farms were 12,943."

Information on the farm census was contributed by county farmers to county commissioners Farady C. Green, chairman; Floyd W. Woody, and Frank R. Medford.

About one American in 12 is over 64 years old.

mostly for sale, 230, (350).

Commercial fertilizer, 4,109 tons, (3,913 tons); all silage made, 21,384 (total for 1953 not listed), and all pulpwood cut, 7,397 tons, (1953 total not listed).

Sows and gilts for breeding, 176, (124); dairy cows, 4,440, (5,026); beef cattle, 7,807, (8,436); hens and pullets of laying age, 67,046, (60,873).

All people living on farm tracts, 12,943, (13,077).

Comments made in the annual report on the farm census were: "According to the January, 1955 Farm Census Survey, no noticeable changes were reported over the previous year in the 173,936 acres of farm land, except the transfer of about 11,000 acres of wood land from unimproved open pasture to all other land such as: woods, waste and non-farm land.

"A slight increase in harvested acreage was reported in corn, oats, lespedeza, alfalfa and other crops, including orchards, vineyards and home gardens. A decrease in the number of milk and beef cows was reported on farms as of January 1, 1955 compared to a year ago. Other items listed by farmers of the county were: 7,397 cords of pulpwood cut and 21,384 tons of silage made in 1954. The number of people reported living on farms were 12,943."

Information on the farm census was contributed by county farmers to county commissioners Farady C. Green, chairman; Floyd W. Woody, and Frank R. Medford.

About one American in 12 is over 64 years old.

1956 Plymouth Belvedere



Belvedere four-door sedan is one of 15 attractive models in Plymouth's 1956 line of cars. Aerodynamic styling, push button driving and powerful new Hy-Fire 277 engine are among outstanding features. Safety door latches and other safe driving items are standard equipment.

Mrs. Ezra Benson Offers To Make Political Speeches

By JANE EADS

WASHINGTON — Republican women leaders, lining up top-notch speakers for the 1956 political campaign, have a real clincher in one of the Cabinet wives, Mrs. Ezra Taft Benson, wife of the Secretary of Agriculture.

"If they ask me, I will do all I can to help," Mrs. Benson told me. "Surely, my heart's there, back of the team."

Up until now, Mrs. Benson says she's been tied down with family responsibilities and raising her six children, but her husband has always encouraged her to speak.

For years, she says, he has

urged her to get up at church affairs and say what's on her mind. What's more, she's had plenty of platform experience in the past.

Before her marriage, she went on a mission for the Mormon Church in Hawaii, and on a number of occasions, took the lead in locally produced Shakespearian plays. "Now that my children are older, I can do more of that sort of thing," she said.

"However, I still believe a woman's first responsibility is in the home . . . if we're to build leaders. No nation is stronger than its homes. I've always encouraged my husband to be the front man, I listen to all his speeches. Also, I've tried to teach my children to be at ease in public. My son Reed is an excellent speaker."

Reed was on a Mormon mission in England and worked with the Republican National Committee during 1954 before going to work for the party's Congressional Committee. During the war he was an Air Force chaplain. Son Mark, in Seattle, Wash., married and the father of two, lectured on a Mormon mission in Eastern states, Barbara, the eldest daughter, a senior at Brigham Young University in Utah, has starred in college operas and as member of the school's famed Madrigal Singers. Right now the entire family is engaged in preparations for her marriage to Dr. Robert Harris Walker of Calgary, Alberta, Canada.

Secretary Benson, a member of the Council of Twelve Apostles of the Church of Jesus Christ of Latter-day Saints (Mormons), will officiate at the ceremonies at the Salt Lake City (Utah) Temple. Beverly, the 18-year-old, will enter BYU this fall. Bonnie, 15, enters first year high school, and Flora Beth, 11, the sixth grade.

State Home Agent Offers Table Tips

By RUTH CURRENT

State Home Demonstration Agent

ABOUT FINGER FOODS—Place relishes like carrot curls, olives, celery and pickles on your bread and butter plate if you have one, otherwise on your dinner plate.

Olives, carrot strips, pickles and hard cheese may be eaten with your fingers.

Always break your bread or roll before spreading it.

Chicken may not be picked up except after you have cut away all of the meat you can with your knife and fork.

ABOUT SILVER — A knife is used only for cutting foods that

cannot be cut with a fork.

Custom says that when a fork is used for eating, it is held in the right hand with the handle between the first finger and the thumb.

For cutting food, the knife is held in the right hand, the fork in the left. The end of the knife handle rests in the center of the palm with the forefinger on the lower side of the knife handle.

When you've used a spoon to stir sugar into coffee or tea, place the spoon on the saucer before drinking.

After using your knife and fork,

place them across the upper part of the plate and parallel to the table's edge.

Best-Known Home Remedy For suffering of

COLDS

VICKS

VAPORUB

Rub on Relief... Breathe in Relief

GENTRY - LINER OIL COMPANY

named new distributor for



The Atlantic Refining Company is pleased to announce the appointment of Gentry-Liner Oil Company as a new distributor for Atlantic Heating Oils in Haywood County.

P. H. Gentry and H. L. Liner, Sr., who operate the concern as a partnership, are well known for their business and civic leadership in this community.

They are ready to give you all of the advantages of Atlantic's famous triple-refined heating oil — now with a new additive that helps prevent sediment from forming in tank bottoms, lines, filters and burner nozzles.

Atlantic's new inhibiting process makes for greater storage stability over long periods and insures you steady, clean-burning, automatic heat with fewer service calls.

The Gentry-Liner Oil Company offers oil burner service, printed meter deliveries, and delivers automatically so that you will enjoy completely carefree heating comfort this winter.

FOR HIGH QUALITY FUEL AND DEPENDABLE SERVICE, CALL

GENTRY - LINER OIL COMPANY

WAYNESVILLE, N. C.

Telephone: 6-8331

After 6 p.m. and Sundays: 6-8639

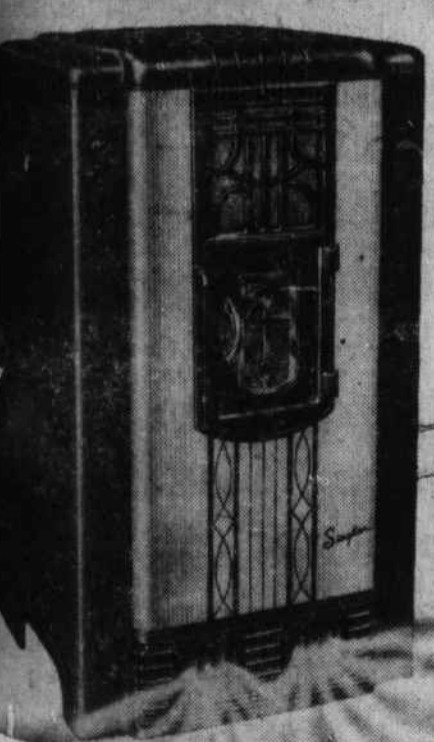
STOP FREEZING!

ARE YOUR FLOORS ICY COLD?

- ARE YOU CONFINED TO ONE OR TWO ROOMS?
- ARE YOUR CEILINGS OVERHEATED?
- ARE YOU WASTING FUEL ON SOOT AND SMOKE?
- IS YOUR HEAT GOING UP THE CHIMNEY?
- IS YOUR FUEL BILL TOO HIGH?



SWITCH to Siegler WARM FLOOR HEATING NOW!



enjoy furnace heat over the floors in every room, without costly, dirt-collecting pipes and registers to install or clean!

Tropical Floor Heat

QUICKLY GETS TO THE BOTTOM OF THE COLD FLOOR PROBLEM

Siegler OIL furnace HEATER

- GIVES YOU WARM COZY FLOORS!
- LETS YOU LIVE IN EVERY ROOM!
- ENDS OVERHEATED CEILING!
- NO MORE MESSY CLEANING JOBS!
- STOPS HEAT WASTE UP THE CHIMNEY!
- SAVES UP TO 50% IN FUEL!

MONEY BACK GUARANTEE

SIEGLER furnace heater pays for itself again and again with the fuel it saves!

MASSIE FURNITURE COMPANY

WAYNESVILLE

Marriage Licenses

Elbert Hoglen and Betty Jo Wines, both of Canton.

Gilbert R. Inman, Jr. and Peggy J. Reeves, both of Waynesville.

Turner Christopher and Gladys Warren, both of Candler.

James M. Henson and Sarah B. Roberts, both of Waynesville.

Plott D. Smith, Gastonia and Hattie Palmer Irvine, Charlotte.



Guarantees Your Family's Future!

Are you a preferred risk? Then you can now provide your family with that extra insurance protection you've wanted — at new low rates.

The Jefferson Family Provider gives maximum protection for the next 20 years — when you need it most. If you die within that time, your family gets \$5,000 cash plus \$50 monthly for 20 years. Real protection, low cost. Call Mr. 4%



S. E. CONNATSER
District Manager
215 Main GL 6-8212

Jefferson Standard
LIFE INSURANCE CO. Home Office: Greensboro, N. C.
Over \$1.4 Billion Life Insurance in Force