

MORE ABOUT

C & D Board

(Continued from Page 1)

west of Soco Gap. Weems told members of the Conservation and Development Board that he already has recommended that the \$2,500,000 set up for the Linville job be used, instead, to build the link from Wolf Laurel Gap to Ravensford, the terminus of the mountaincrest road.

A two-mile stretch from Soco Gap to Wolf Laurel Gap is already paved. Weems said that difficulties in obtaining rights-of-way in the Blowing Rock-Linville area led him to recommend the shift to National Park Service officials.

Part of the Wolf Laurel-Ravensford section was graded before World War II and three of six tunnels were built.

The Advertising Committee approved advertising plans for the first quarter of 1956.

The State Parks Committee approved a request by the DiSer Corp. of Asheville for renewal of a contract to operate the Mt. Mitchell State Park restaurant. The restaurant served 16,614 persons in 125 days of business this year, the committee was told.

The Commerce and Industry Committee approved continuation of a study exploring the possibility of establishing seafood processing plants in the state's coastal area.

The board agreed to work with the American Trucking Assn. in setting up a common industrial development program similar to one existing between the N. C. Motor Carriers Assn. and the railroads after Douglas said there are now about 1800 communities in the state that have no railroad service.

John Parris of Sylva, Cherokee Historical Association public relations director, reported more than \$500,000 of the Cherokee drama's earnings of the past six years have been turned over to the Cherokee people in salaries, scholarships and loans to permit Cherokee boys and girls to attend college, and in other projects.

The surplus funds, he said, have been used to stimulate the Cherokees incentive to help themselves.

W. Beekman Huger of Asheville, president of WNCAC, told the board his organization's projects for the future include roadside beautification and community planning, school forestry projects (which have been revived), and a revision of WNCAC's 1948 industrial resources survey in each of the 11 counties in the organization's operating area.

State Sen. William Medford of Waynesville described the work of the parks commission in its role of liaison between state government and federal agencies. Medford is chairman of the N. C. Park Commission.

Edward A. Hummel, superintendent of the Great Smoky Mountains National Park, told the board North Carolina needs more facilities on its side of the park to attract visitors.

The volume of visitors to the park for 1955, he reported, probably will reach about 2,600,000, compared to 1,000,000-plus in 1946.

Don J. Morriss, supervisor of the North Carolina National Forests, reported the water resources are the least developed of the national forest resources, there was room for many watersheds (water supply sources) and the water was kept free of impurities.

Formal approval was given by the board to a proposal for a lease to two concerns to prospect for ilmenite deposits in State-owned coastal waters.

C & D Director Ben E. Douglas was authorized to sign a lease with W. H. Rhodenbeck and associates of Morehead City and High Point and Graham D. Monroe, formerly of Lillington and now of Coral Gables, Fla., for prospecting rights for ilmenite deposits in coastal waters.

Scroop W. Enloe, Jr., Spruce Pine, chairman of the board's minerals committee, said "a new large industry" may well be established along the coast if ilmenite should be found and mined in commercial quantities.

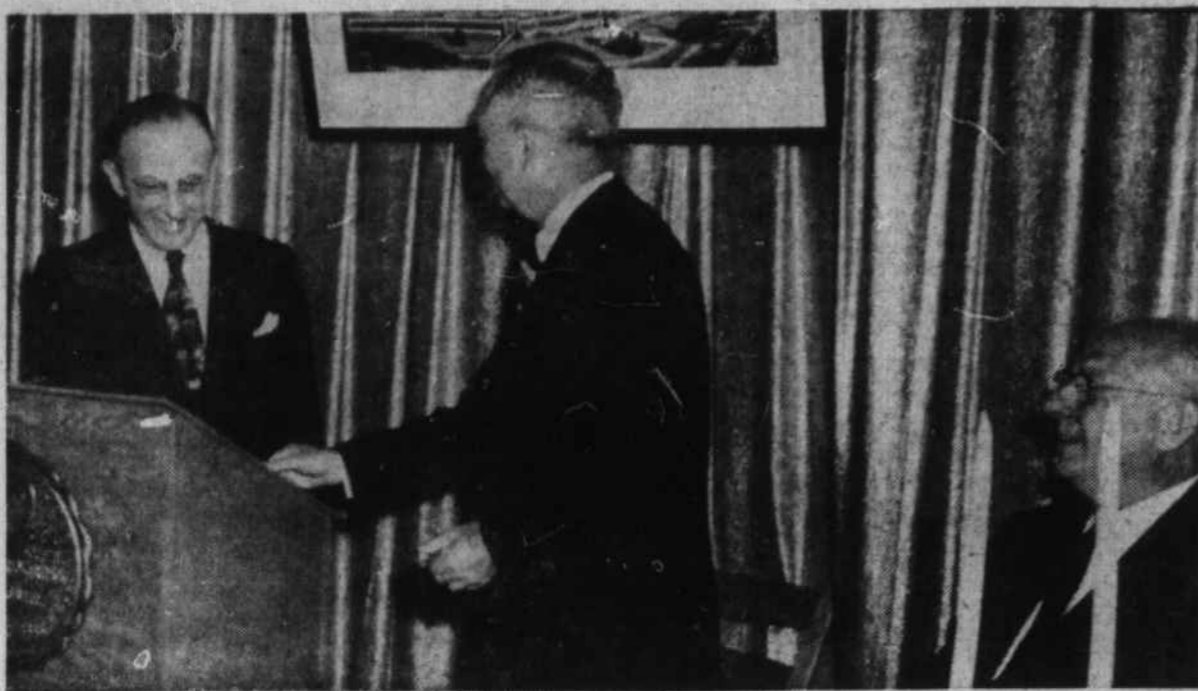
Enloe said a committee composed of himself, Douglas, and Dr. J. L. Stuckey, State geologist, had conferred at length with Col. Clyde Patton, executive director of the Wildlife Resources Commission, and Dr. A. F. Chestnut, director of the Institute of Fisheries Research at Morehead City, and "all of us agreed the prospecting methods to be used will not harm marine life or tend to pollute any of the waters in which the prospectors work."

It was emphasized that no mining contracts will be awarded by the Department of Conservation and Development until public hearings have been held regarding areas to be mined.

The board approved a long-range forestry program submitted by the North Carolina Forestry Council and designed to provide more adequate forest fire control as well as for better forestry practices in general.

Director Douglas told the board members he is "deeply appreciative of the fine support you are giving me and the others in the department in the work we are doing and trying to do."

A resolution expressing "deep regret" over the resignation of Eric W. Rodgers as assistant to Douglas was adopted. Rodgers is



"A SWELL JOB" is what Ben Douglas, director of the C & D Board, (seated right) told M. L. Freedlander, left, as the state official talked of the expansion program of the Waynesville plant of Dayton Rubber, at the dinner given Tuesday by Mr. Freedlander for the visiting board members and other guests. In the center is Jonathan Woody, master of ceremonies of the occasion. (Photo by Hugh Norton).



A PARTIAL VIEW of the elaborate display of products made by Dayton Rubber Company, as shown at the dinner given for the C & D Board here Tuesday night. The backdrops were of gold metallic cloth, in keeping with observance of the 50th golden anniversary of the firm. (Photo by Hugh Norton).

The Driver's CLINIC

A Question and Answer Column On Traffic Safety, Driving and Automobiles Conducted For This Newspaper By The State Department of Motor Vehicles

QUESTION: Why is it good to lock car doors from the inside while driving?

ANSWER: Locking your doors will make it more difficult for children to tumble out accidentally, give occupants added protection from hi-jackers when the car stops for traffic lights and may prevent a door from popping open in the event the car rolls over in an accident.

QUESTION: Is it safer to hit an object or roll over at a given speed?

ANSWER: The energy of a moving car increases in proportion to the square of the speed. Between 35 mph and 40 mph this energy increases tremendously, enough so to make it extremely dangerous to strike a bridge abutment, large tree or other fixed object. At lower speeds occupants might survive, even though the vehicle was demolished. Above the 35-40 speed range it is perhaps safer to maneuver the car so as to sideswipe or miss a fixed object by rolling the car over. This can be done easily by simply locking the brakes, and cramping the front wheels sharply to one side. Decelerate the car as much as possible before rolling it. The energy dissipated in 20 feet is enormous and may be the difference between a fatal and a property damage accident.

QUESTION: How can I reduce my gasoline bill?

ANSWER: All of these precautions will help: clean oil, regular lubrication, properly inflated tires, steering mechanism properly adjusted, clean plugs, carburetor adjustment, moderate cruising speeds; don't race engine waiting for signal lights, change from low to second and from second to high as quickly as possible.

QUESTION: Why is it sometimes permissible to slip the clutch?

ANSWER: It's sometimes necessary in slick mud in order to transmit power to the rear wheels in such a manner as to prevent slipping, also in close-in maneuvering slipping the clutch will provide a gear ratio the transmission does

leaving the department November 4 to resume active direction of his weekly newspaper, the Commonwealth, at Scotland Neck.

Rodgers told the board he has been "deeply interested" in the conservation and development of the State's natural resources since he was first named by former Governor Cherry to the board in 1945. He said he regretted leaving, but said he feels he must return to active management of his weekly newspaper.

Second 4-H Turkey Shoot Will Be Staged Saturday

Library Notes



Margaret Johnston County Librarian

RECENT MEMORIAL BOOKS

In memory of Mrs. Leonard S. Bigham of Huntersville, N. C. this book has been added: Story of Religion. This book was given by the sixth grade of Central Elementary School, pupils of Mrs. W. Jackson Hunnicutt, daughter of Mrs. Bigham.

In memory of Mrs. Verlin Gibson, Easter Idea Book by Adams, given by Dr. and Mrs. Boyd Owen. In memory of Miss Laura Lenoir two books have been added as

not have, enabling you to execute a maneuver more skillfully. It's never recommended however. The exceptions here are merely to point out where necessity sometimes forces it.

QUESTION: Where do you put your right foot when entering a dangerous intersection in high gear?

ANSWER: Remove right foot from accelerator and hold it lightly on the brake pedal until you are clear of hazards. This habit will reduce a major part of your reaction time distance in case you are forced to make an emergency stop.

Haywood County 4-H Clubs will sponsor their second turkey shoot on the old county home property Saturday, starting at 10 a.m.

The shoot will be in progress all during the day Saturday and will feature events for men, women, boys, and girls. Both trap shooting at clay pigeons and target shooting will be offered. Entrants will use their own guns, but ammunition will be furnished on the grounds.

Turkeys and hams will be awarded as prizes. Proceeds will be used to finance 4-H Club projects. The county home property is located on Highway 110 between Bethel and Canton.

follows: Happy Valley, by Mr. and Mrs. Joseph L. Michal, and Tar Heel Women by Mr. and Mrs. John Taylor.

In memory of Professor A. W. Mason, Groves Dictionary of Music and Musicians, Vol. IV was given by Terry McGill.

In memory of Reverend Allen Thurman Medford the following books have been added:

Cradle of Our Faith by Trever, given by Mr. and Mrs. H. Pitt McCarrroll.

Wise Fisherman's Encyclopedia by McClane, given by Mr. and Mrs. Frank Miller.

Jefferson Davis by Strode, given by Mr. and Mrs. Kenneth Fry. Southern Reader by Thorp, given by Mary Cornwell and Jean Childers.

Age of Faith by Durant, given by the Library Staff. Signs and Symbols in Christian Art, given by the Library Board.

LAFF-A-DAY

FURNITURE



"We'll take this one, dear."

PARK - SHOP - SAVE



RAY'S SUPER MARKET



SAVE ON LOW PRICES

Choice Meats — Fresh Produce Nationally Advertised Brands of Groceries.



SAVE SOUTHERN STAMPS

Given Free With Every Purchase of 10c or More. Fill Your Books now For Christmas.



GENERAL ELECTRIC

FREE

Hundreds of Lovely Gifts Like Those Pictured Here Are Yours FREE — For Southern Stamps.



SILVER DUST Soap Powder

Large Box

25c

Armix Shortening

10c Off Now

3 Lb. Can

65c

JELL-O 3 Pkgs. For 25c

Santo Coffee 1 Lb. Bag 79c

Hunt's Peaches No. 2 1/2 Can 32c

Vegetole SHORTENING 3 Lb. Carton 59c

Gerber's Strained BABY FOOD 3 Jars For 29c

CAKE MIX 10c

9 oz. Pkg. JIFFY

White, Yellow, Chocolate, Spice

Quality Meats

FRESH PORK ROAST

Hams 39c PER LB. Shoulder 29c PER LB.

FRESH GROUND BEEF - - - per lb. 35c

BUY NOW FRUIT CAKE INGREDIENTS COMPLETE LINE

Mrs. Filbert's MARGARINE Two Pounds - - 43c

Peter Pan PEANUT BUTTER 9 oz. Jar - - - 35c

Eatwell GRATED TUNA No. 2 1/2 Can - - - 23c

Duckett's CORN MEAL 10 Lb. Bag - - - 57c

Cut Rite WAX PAPER 125 Ft. Roll - - - 25c

Campbell's TOMATO SOUP Two Cans - - - 23c

Fruits & Vegetables

RED GRAPES 10c Lb.

GRAPEFRUIT 4 Large Size 27c

BANANAS 14c Lb.

CALO DOG FOOD

Three Cans

29c

Instant COFFEE

2 oz. Jar

45c