



FAVORITE RECIPES" were illustrated with the finished products by members of the Upper Crabtree Home Demonstration Club in their Achievement Exhibit. Copies of recipes were given to visitors.

THE JONATHAN CLUB exhibited "Your Basic Wardrobe" at the Tobacco Festival. Shown left is a summer outfit and accessories and at right is a winter outfit with accessories. All outfits were made by club members. (Mountaineer Photo).

CREATING THE BEAUTIFUL through use of leisure time was well illustrated by the West Canton Home Demonstration Club with this exhibit at the Tobacco Festival. The articles shown were made of copper. (Mountaineer Photo).

## Corporate Plans Completed S-D Day, December 1

Commissioner who is turning up plans for S-D Day, is anxious that approaching winter intensify the hazards of the road. He has advised them to get their trucks ready for winter promptly.

On cold weather hazards, Scheidt said, "Pleasant fall weather lures many people into a false sense of security. They think it will last forever. Yet, most drivers realize that, every year, the first frost or cold weather finds thousands unprepared."

"It's much easier to have brakes, headlights, wipers, defrosters and other mechanical features of the car checked before the cold weather rush starts. But remember, getting the car ready for winter means more than an oil change and putting in anti-freeze."

"It's just as important to check the safety factors of vision and traction so you will be ready for winter rains, fog, smog, sleet and snow."

As statewide S-D Day coordinator, Scheidt recommended the following winter driving hints — or "rules for longevity":

## Two From Canton Elected At UNC

Two Canton young people were elected to class offices at the recent election at the University of North Carolina.

Bill Morgan was elected vice president of the junior class, and Martha Poindexter was named sophomore class president.

Following winter driving hints — or "rules for longevity":

Don't blame the weatherman for accidents. Be prepared.

Get the "feel" of the road, when starting out on slippery streets.

Keep the windshield clear of fog, sleet and frost. Be certain wiper blades, defrosters and lights are in good working order.

Keep a safe distance between your car and the one ahead. A good rule of the thumb is one car length for each ten miles per hour of speed. Allow more space when roads are slippery.

## Access Road To Parkway Is Requested

Resolutions urging the State Highway Commission and the U. S. Bureau of Public Roads to approve allocations to match those of forestry funds for the construction and paving of a road in Transylvania County as a connecting link at Beech Gap have been approved and sent to Raleigh.

They were filed by the Transylvania County commissioners, the two board of aldermen and the road committee of the Brevard chamber of commerce.

Harry Buchanan, 14th Division highway commissioner, met with local governmental officials and

chairman of the freshman class. About 2,500 students voted in the annual fall election,

civic leaders last week and explained that there would be a highway meeting in Raleigh Tuesday, when the proposed Gloucester connecting link would be discussed.

In the resolutions it is pointed out that since the new 11½-mile stretch of the Parkway has been opened from Wagon Road Gap to Beech Gap atop Pisgah that thousands of cars are now travelling this scenic highway.

It was further explained that the link terminates in a dead end at Beech Gap and travelers have to turn around and return over the same section or to turn to the right and travel down to Lake Logan over a narrow and winding dirt road, all of which creates traffic congestion.

If the road is constructed from the end of the pavement on Gloucester road to Beech Gap, it would afford a way of access to and from this section of the Parkway to the south, passing through an area of unsurpassed scenic beauty in the Pink Hook Gap section, and would

## N.C. Nutritionist Offers Tips On Cooking Holiday Turkey

With Thanksgiving Day near, it's time to talk turkey, according to Virginia Wilson, State College extension nutritionist.

Roast your turkey the modern way, suggests Mss Wilson. It will be brown, juicy, flavorful and tender.

1. Rub the inside cavity with salt (1/8 teaspoon per pound of bird).

2. Fill the body and neck cavity with your favorite stuffing—but do so immediately before roasting. Allow 3/4 to 1 cup stuffing per pound of ready-to-cook bird.

3. Truss by tying or skewering down neck skin, legs and wings. Rub bird with melted or softened

afford persons from upper South Carolina a shorter and more direct way onto the Parkway.

unsalted fat.

4. Lay turkey on a rack in an open pan on one side with back up. Do not put any water in pan.

5. Cover bird with cheesecloth which has been moistened with melted fat or a piece of aluminum foil. Let covering drop around sides of bird but do not tuck underneath. Roast bird at a constant low temperature (300 to 325 degrees) until tender, turning turkey over to opposite side, still back up. Turn breast up when bird is about half done.

6. Sprinkle melted fat over the cloth as it becomes dry.

7. Test for doneness: move leg by grasping bone. If drumstick-joint breaks or moves easily, the turkey is done.

Field curing is a poor way to preserve alfalfa for dairy cattle feed, according to USDA scientists.



**WHY WORRY ABOUT HOSPITAL BILLS!**

LET

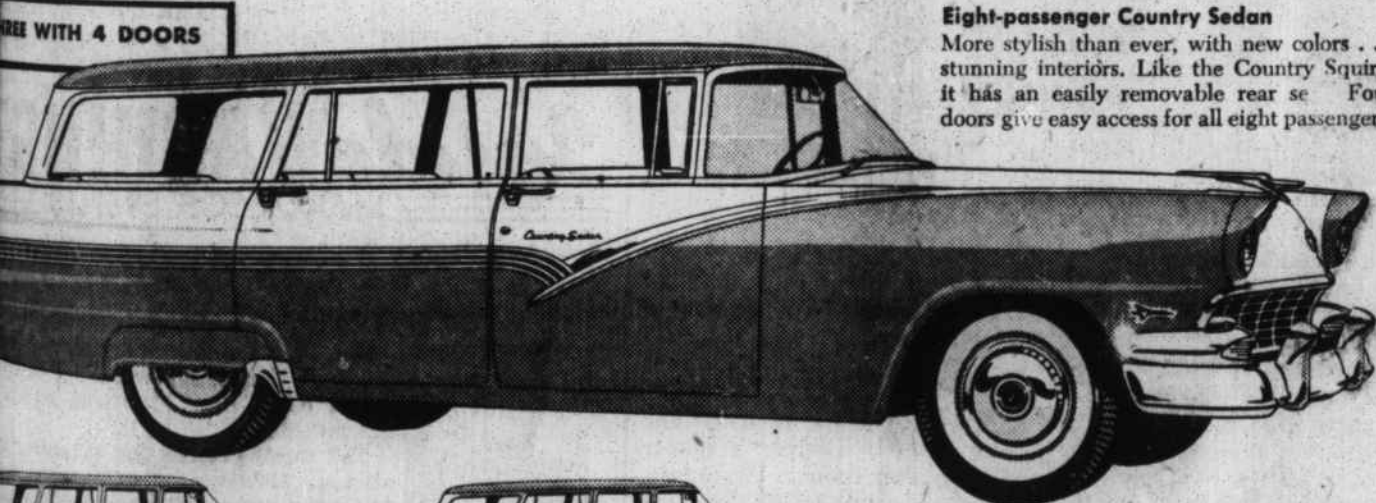
**BLUE CROSS DO YOUR WORRYING**

WRITE OR CALL FOR FULL DETAILS HOSPITAL CARE ASSOCIATION YOUR BLUE CROSS PLAN

Representative WAYNE ROGERS Lake Junaluska, N. C. Phone: Glendale 6-5593

## '56 choose FORD... America's Favorite Station Wagon!

With Thunderbird Y-8 power... Thunderbird styling... and exclusive new Lifeguard Design



**Eight-passenger Country Sedan**  
More stylish than ever, with new colors... stunning interiors. Like the Country Squire, it has an easily removable rear seat. Four doors give easy access for all eight passengers.



**Country Squire**  
A queen among station wagons. Mahogany-finished steel panels give woodlike beauty to this luxurious, 8-passenger dreamboat.



**Parklane**  
Brand-new and carpeted throughout, this 2-door, 6-passenger dandy has limousine comfort and doesn't mind rolling up its sleeves.



**Wagon**  
Wagon has two wide doors, easily seats six. As in other models, lift gate and can be operated easily with one hand.



**Custom Ranch Wagon**  
A 6-passenger beauty that converts in a split jiffy from luxury liner to a super-spacious cargo carrier. Easy-to-clean interior can take it.

# FORD

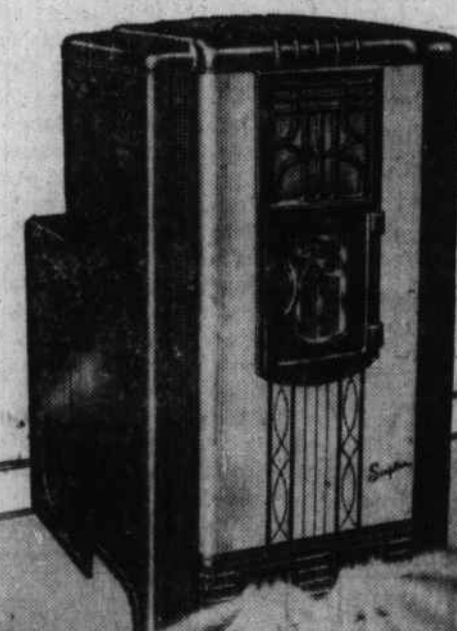
STATION WAGONS

## PARKWAY MOTORS, Inc.

Waynesville

# 4 SIEGLER USES HEAT THAT'S 4 TIMES HOTTER OVER YOUR FLOORS!

**FURNACE HEAT**  
No costly pipes or registers to install or clean!



**WARM COZY FLOORS IN EVERY ROOM!**



### Siegler TWO-IN-ONE HEATMAKER

Siegler captures the Top-o'-the-Flame heat, doesn't waste it up the flue as ordinary heaters do. This extra, patented inner heater is built right into the heart of the hottest fire. It captures the 4 Times Hotter heat from the burner flame — pours it over your floors. **SAVE UP TO 50% IN FUEL!**

*Tropical Floor Heat*  
GETS TO THE BOTTOM OF THE COLD FLOOR PROBLEM

## Siegler PATENTED AUTOMATIC OIL HEATERS

### MONEY BACK GUARANTEE

Prove it — make the "MATCH-TEST"!

# MASSIE FURNITURE COMPANY

MAIN STREET

WAYNESVILLE