

Poets Corner

RETRIBUTION

A gallows was built by Hamon, In the era of the captive Hebrews, During the reign of Ahasuerus For Mordecai the Jew.

Many years have passed since the building, But the story is ever new, For Hamon hung on the gallows He built for Mordecai the Jew.

Somewhere we meet retribution, Clothed in sovereignty and light, We stand with eyes cast downward And there receive the right.

BEATRICE W. WALLACE
Seven Springs

Sampson Farmers Are Amazed At Irrigation Devices

Clinton, Oct. 10. — More than 300 farmers, many of whom in recent years had seen their crops fall because of insufficient moisture, saw just outside of Clinton how they could provide additional rain when they saw the need for it.

To Relieve Misery of
COLDS
take **666**
LIQUID OR TABLETS—SAME FAST RELIEF

The man-made rain fell upon a large field on the J. H. Bradshaw farm. The rain was provided by seven different farm irrigation systems in what was described as the most outstanding irrigation demonstration ever held in North Carolina.

Many farmers were amazed at what they saw as they observed the different portable, revolving sprinkler systems in operation. They huddled around the dealers who were demonstrating the equipment to ask questions as to cost and efficiency of the various size systems.

The sprinklers in use included small ones for irrigating tobacco plant beds as well as larger ones for use on large acreage at the rate of 250 gallons per minute.

Prior to the demonstration, the farmers gathered on the field to hear the dealers explain the operations of the systems.

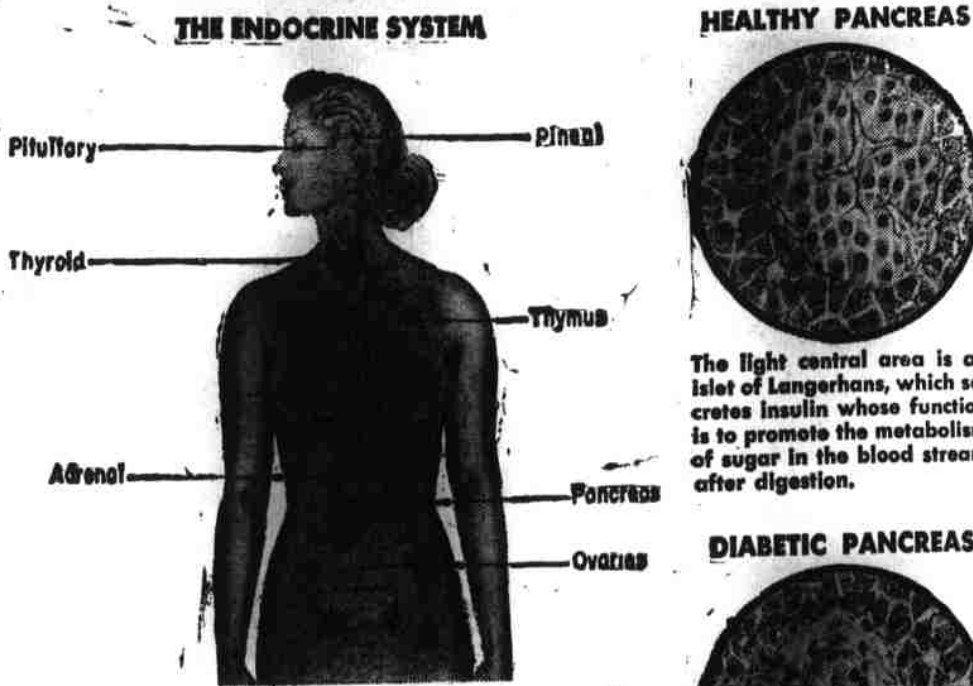
H. M. Ellis, in charge of agricultural engineering for State College Extension Service, told the group that irrigation was one time considered practical for use only in very dry areas. Today, he says, research has proven that applying water to certain crops in humid areas such as North Carolina is a profitable practice.

State College Hints To Home Makers

Where many are fed, such as in school lunchrooms at church suppers and picnics, it is sometimes hard to serve food in uniform portions, giving each plate its fair share and making the food supply "go round."

Those who often serve such a group can get good use from stan-

The Human Hormone Factory



The glands of internal secretion presently recognized are those shown in this "soft x-ray" drawing by Paul Peck, well-known medical artist. Only recently has the pancreas been included in this company—it having been established that insulin, the substance formed by the islets of Langerhans in the pancreas, is a true hormone. The products of all these glands are vital to full development and complete health (though the thymus begins a slow process of atrophy after babyhood). Each gland or pair of glands secretes into the blood stream one or more hormones, each having a specific function and—it is assumed—each affecting directly or indirectly functioning of other endocrine glands.

The light central area is an islet of Langerhans, which secretes insulin whose function is to promote the metabolism of sugar in the blood stream after digestion.

The islet of Langerhans here has deteriorated into a glassy, pellucid mass, incapable of secreting insulin.

Because sportsmen realize the disastrous effect forest fires have on wildlife the majority are extremely cautious, however the min-

Standard size scoops and ladles made for restaurants and hotels. Such are recommended to those serving school lunches.

For serving school lunches or adult groups, specialists say that ladles of 1/2 cup, 3/4 cup and 1 cup capacity are especially useful. 1/2 cup and 3/4 cup portions are useful when serving vegetables, desserts, and many main dishes. Cup size portions are usual for soups and beverages.

Scoops, sometimes called "dishers," are more convenient than ladles for serving thick mixtures, such as mashed potatoes, cottage cheese and salmon salad. Convenient sizes for serving plates include

No. 8 (1/2 cup) and No. 16 (3/4 cup). Scoops come in sizes from No. 6 to No. 40. Size numbers indicate the number of leveled-off scoops in 1 quart.

TOBACCO

Tobacco prices opened the week at Eastern Carolina Markets steady to slightly weaker and held about steady throughout the week ranging from a low of \$52.23 to a high of \$56.45. Gross sales for the season moved above the 340 million pound mark at an average of \$48.20 per hundred.

Old Belt markets also reported slightly weaker prices with averaging prices \$45.57 to \$48.13.

The state's Middle Belt tobacco markets reported higher prices with day-to-day averages of \$47.40 to \$51.26.

The Border Belt markets closed the season last week with gross sales of over 282 million pounds at an average of \$48.86.

Hunters Are Urged To Protect Forests

The several thousand hunters of the 1949 hunting season will create a tremendous hazard to the forests of the State unless each one exercises extreme care to prevent forest fires.

ority were, according to records of the N. C. Forest Service, responsible for 157 fires last year which burned 10,000 acres and caused damages amounting to thousands of dollars.

Duplin Boy Makes A. C. Fraternity

The six fraternities and sororities of Atlantic Christian College in Wilson held their annual initiation ceremonies last week for new members. Thirty-five men and twenty women made up the total of 55 pledges going through the initiation. Among those initiated into Phi Delta Gamma fraternity, headed by Alvin James of Wallace, was Lee Potter of Kinston. Richard Stroud of Pink Hill was among those initiated into Phi Kappa Alpha fraternity.

For Best Prices and Complete Job on Monuments, See or Write

Rev. H. J. Whaley
BEULAVILLE

one-derful one-coat

WALL-FIX PAINT



One Paint! One Coat! One Day! It's true—see-derful WALL-FIX covers most any interior surface... primes, seals and finishes in one swift operation. Best of all, anyone can use WALL-FIX and get a rich satiny finish that's washable, durable.

WALL BOARD PLASTER BRICK WALLS PAPER

one coat covers all interior walls and woodwork

SELF PRIMING! WALL-FIX primes, seals and finishes in one swift operation.

ONE COAT COVERS! Most any surface! Nothing equals an oil base paint for durability and hiding power!

SCRUBABLE! Even water paints can be gone over with a damp cloth. But you can scrub WALL-FIX!

NO BRUSH MARKS! Leaves no overlap... beginners do a perfect job!

READY-MIXED! No messy mixing—let's ready mixed for brush or applicator.

DRIES QUICKLY! Paint a room in the morning... move back into it the same day!

Now Available in 28 Colors - Matching ready-mixed color tapes.

Duplin Mercantile Co.
KENANSVILLE, N. C.

Announcement

We are proud to tell you of our appointment as dealer for the famous line of



- REFRIGERATORS • ELECTRIC RANGES
- ELECTRIC WATER HEATERS • HOME FREEZERS
- AUTOMATIC WASHERS • ELECTRIC CLOTHES DRYERS
- ELECTRIC IRONERS • KITCHEN CABINETS
- KITCHEN SINKS

For more than a quarter-century the name "FRIGIDAIRE" has meant highest quality, dependability and long service. It is a name backed by the experience of building over 8 million Frigidaire refrigerators. So, we feel justly proud of this announcement, knowing that we can sell you these FRIGIDAIRE appliances with complete confidence in your satisfaction... and you can buy them knowing there is nothing finer.

Remember - You're twice as sure with two great names, for FRIGIDAIRE is made only by GENERAL MOTORS!

BELLE OIL COMPANY, INC.
PINK HILL, N. C.

Water won't stop it!



The Beautiful CHRYSLER

When others cough and quit... Chrysler doesn't even splutter. Storm—damp—high-water—can't faze it! Throw a bucket of water over the engine and you can't stop it. Once again Chrysler brings you the year's most needed engineering feat. The first and only completely waterproof ignition system on any passenger car in America—and it's standard on all Chrysler models! Coil—distributor—wiring harness—spark plugs—everything sheds water like a duck! And mind you... this is only one of 50 stand-out advances this year on the beautiful Chrysler. Better see how they add up to the sweetest driving, best riding Chrysler ever built for you. Visit your nearby Chrysler dealer for an eye-opening demonstration today.

DUPLIN MOTORS, Inc.