

Check Your Car For Cold Weather

A thorough check of the cooling system prior to adding anti-freeze is a major step in preparing your car for winter driving. Many lose their anti-freeze through boiling away or leakage simply because they failed to take this precaution at the start of the season.

Not only should the hose lines and connections be thoroughly checked for leaks, but the entire cooling system should be flushed of all sludge and dirty water, which prevents free circulation.

Keep the battery fully charged and charging. A low charged battery may freeze and burst at a temperature not much below 32 F. See that the regulator is working properly.

At the approach of cold weather, the crankcase should be drained, flushed and refilled with the correct grade of oil for the coldest

weather expected during the winter.

See if the engine needs a tune-up to insure quick starting.

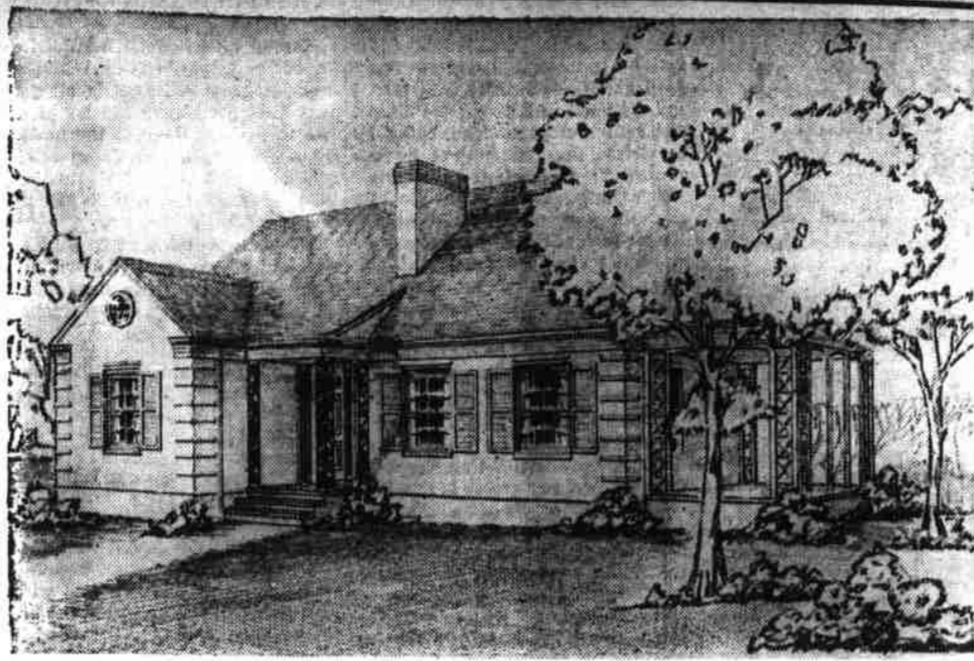
Have brakes checked for winter driving and be sure that tires are not so dangerously smooth that they will make driving on icy roads doubly hazardous.

Careful motorists will drive slowly until the engine reaches normal operating temperatures. And by keeping the fuel tank full as much of the time as possible, they prevent condensation of moisture and resultant freezing-up of the gas line. A good plan is to fill the gas tank at the end of the day's driving, rather than at the start.

SEQUOIA POTATOES IN STRONG DEMAND

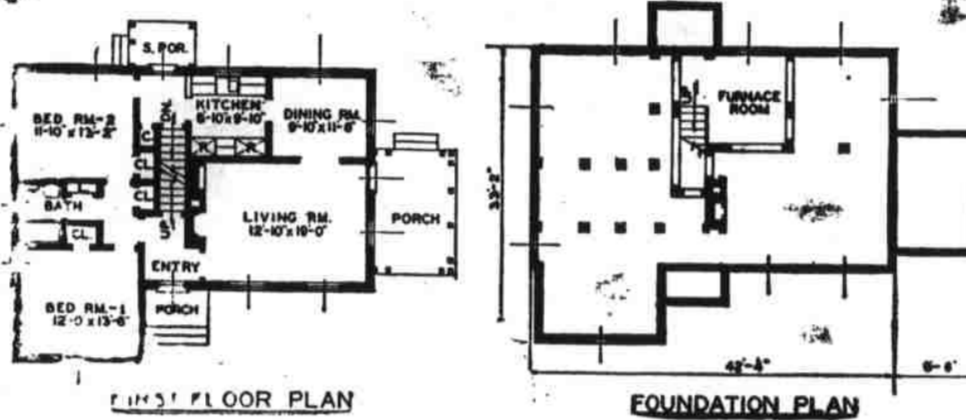
Growers of certified Sequoia potato seed in Avery County are continuing to find a good market for their product in Tenn., Va., and the two Carolinas, reports H. R. Niswonger, in charge of horticulture extension at State College.

In fact, he says, the growers are



BRICK HOUSE PLAN NO. 445—Designed by John Floy Wicker, Architect, Greensboro, N. C.

This is one of 37 homes designed by leading Carolina Architects and featured in "Carolina Homes," a plan book published by Brick & Tile Service, Inc., Greensboro, N. C.



FIRST FLOOR PLAN

FOUNDATION PLAN

This house has a pleasing appearance such as is rarely achieved in a small home of this type. The slight extension on the front of the house, and the side porch give it individuality. The blinds on the windows give the whole house a unified aspect. The wrought iron work on the front porch immediately shows the good taste of the owner.

The living room has three windows in it which give the space within an air of freedom. The manner in which the living room opens into the dining room has the effect of making each of the rooms appear larger. The porch serves to extend the living room right into the out-of-doors and thus performs a valuable service.

The bedrooms are separated well by a bath between them. This makes for unusual privacy. The kitchen is well removed from the sight of occupants seated in the living room. This is a factor often left unconsidered in small house plans.

Closet space is ample and vent-
unable to meet the demand for their product. They recently sold 7,000 bags of seed potatoes and could have sold another 7,000 bags if the potatoes had been available.

Some 15 or more new growers will produce certified seed of this variety in 1950.

lation excellent. Abundance of storage space is in the attic.

TOBACCO

Steady to lower grade averages, light volume of offerings, and slightly poorer quality was seen during the 8th week of Eastern North Carolina flue-cured tobacco sales.

According to the Federal-State Market News Service many grades averaged from \$1.00 to \$3.00 per hundred below last week. Most of the declines amounted to only \$1. Practically all qualities were adversely affected whereas last week losses were generally confined to the lower qualities. The practical top remained at \$65 but there were considerably less baskets reaching this figure. A few leaf grades parti-

ally regained losses of last week.

The principal cause of the lower quality offerings was the relatively large increases in the amount of damaged tobacco. However, there were more cutters and lugs sold. Most of the offerings graded low to good quality. Leaf predominated followed by an equal proportion of cutters, lugs, and smoking leaf.

Sunday School To Be Enlarged

The Sunday School Class of the Stockinghead Baptist Church (Col.) are enlarging their class rooms. At this writing the Class have received contributions in the amount of more than \$55.00 to carry on the

Southern Farm Market Summary

New Churches In SBC Territory

A total of 2863 Southern Baptist churches have been organized since 1940, according to Porter Routh, secretary of the Department of Survey. Of these, 933 are located in cities, 295 in towns, 462 in villages, and 1173 in the open country.

In the city, nearly two-thirds of the 933 new churches have fewer than 200 members, but several have more than 1,000. Of the total 933, all have Sunday school organizations, 78.3 percent have Training Unions, 78.2 percent have WMU work, and 52.6 percent have Brotherhoods.

Only 6.5 percent of the open country churches organized since 1940 have Brotherhood organizations; 25.7 percent have WMU work, and 37.7 percent have Training Unions. Of the young open country churches, 507 have full-time services, 425 half-time, 229 quarter-time, and 20 have services three times a month.

Hog prices last week were unusually strong at some southern markets, gaining as much as \$1.50 a hundred. Closing prices Friday for the best weight butcher hogs at southern markets went as high as \$18.50.

Cattle marketings picked up at southern points slightly and for the first time this season the combined receipts at five major markets exceeded the run for the same week a year ago.

Cattle prices ranged from fully steady to stronger, except low grade cows and bulls lost 50c a hundred at Montgomery.

Broiler markets were steady with Friday's closing prices in Central North Carolina, 25 to mostly 26 cents, and heavy hens 21 to 25 cents.

666 GIVES FAST RELIEF when COLD MISERIES STRIKE

LIQUID OR TABLETS

one-derful one-coat

WALL-FIX PAINT



One Coat One Coat One Day! It's true—see-derful WALL-FIX covers most any interior surface... primes, seals and finishes in one swift operation.

Best of all, anyone can use WALL-FIX and get a rich satiny finish that's washable, durable.

WALL-FIX PRIMER, SEALER AND FINISHER. ONE COAT COVERS! ALL SURFACES! SELF PRIMING! NO BRUSH MARKS!

WALL-FIX PRIMER, SEALER AND FINISHER. ONE COAT COVERS! ALL SURFACES! SELF PRIMING! NO BRUSH MARKS!

WALL-FIX PRIMER, SEALER AND FINISHER. ONE COAT COVERS! ALL SURFACES! SELF PRIMING! NO BRUSH MARKS!

WALL-FIX PRIMER, SEALER AND FINISHER. ONE COAT COVERS! ALL SURFACES! SELF PRIMING! NO BRUSH MARKS!

WALL-FIX PRIMER, SEALER AND FINISHER. ONE COAT COVERS! ALL SURFACES! SELF PRIMING! NO BRUSH MARKS!

WALL-FIX PRIMER, SEALER AND FINISHER. ONE COAT COVERS! ALL SURFACES! SELF PRIMING! NO BRUSH MARKS!

WALL-FIX PRIMER, SEALER AND FINISHER. ONE COAT COVERS! ALL SURFACES! SELF PRIMING! NO BRUSH MARKS!

WALL-FIX PRIMER, SEALER AND FINISHER. ONE COAT COVERS! ALL SURFACES! SELF PRIMING! NO BRUSH MARKS!

WALL-FIX PRIMER, SEALER AND FINISHER. ONE COAT COVERS! ALL SURFACES! SELF PRIMING! NO BRUSH MARKS!

WALL-FIX PRIMER, SEALER AND FINISHER. ONE COAT COVERS! ALL SURFACES! SELF PRIMING! NO BRUSH MARKS!

WALL-FIX PRIMER, SEALER AND FINISHER. ONE COAT COVERS! ALL SURFACES! SELF PRIMING! NO BRUSH MARKS!

WALL-FIX PRIMER, SEALER AND FINISHER. ONE COAT COVERS! ALL SURFACES! SELF PRIMING! NO BRUSH MARKS!

WALL-FIX PRIMER, SEALER AND FINISHER. ONE COAT COVERS! ALL SURFACES! SELF PRIMING! NO BRUSH MARKS!

WALL-FIX PRIMER, SEALER AND FINISHER. ONE COAT COVERS! ALL SURFACES! SELF PRIMING! NO BRUSH MARKS!

WALL-FIX PRIMER, SEALER AND FINISHER. ONE COAT COVERS! ALL SURFACES! SELF PRIMING! NO BRUSH MARKS!

WALL-FIX PRIMER, SEALER AND FINISHER. ONE COAT COVERS! ALL SURFACES! SELF PRIMING! NO BRUSH MARKS!

WALL-FIX PRIMER, SEALER AND FINISHER. ONE COAT COVERS! ALL SURFACES! SELF PRIMING! NO BRUSH MARKS!

WALL-FIX PRIMER, SEALER AND FINISHER. ONE COAT COVERS! ALL SURFACES! SELF PRIMING! NO BRUSH MARKS!

WALL-FIX PRIMER, SEALER AND FINISHER. ONE COAT COVERS! ALL SURFACES! SELF PRIMING! NO BRUSH MARKS!

WALL-FIX PRIMER, SEALER AND FINISHER. ONE COAT COVERS! ALL SURFACES! SELF PRIMING! NO BRUSH MARKS!

WALL-FIX PRIMER, SEALER AND FINISHER. ONE COAT COVERS! ALL SURFACES! SELF PRIMING! NO BRUSH MARKS!

WALL-FIX PRIMER, SEALER AND FINISHER. ONE COAT COVERS! ALL SURFACES! SELF PRIMING! NO BRUSH MARKS!

WALL-FIX PRIMER, SEALER AND FINISHER. ONE COAT COVERS! ALL SURFACES! SELF PRIMING! NO BRUSH MARKS!

WALL-FIX PRIMER, SEALER AND FINISHER. ONE COAT COVERS! ALL SURFACES! SELF PRIMING! NO BRUSH MARKS!

WALL-FIX PRIMER, SEALER AND FINISHER. ONE COAT COVERS! ALL SURFACES! SELF PRIMING! NO BRUSH MARKS!

WALL-FIX PRIMER, SEALER AND FINISHER. ONE COAT COVERS! ALL SURFACES! SELF PRIMING! NO BRUSH MARKS!

WALL-FIX PRIMER, SEALER AND FINISHER. ONE COAT COVERS! ALL SURFACES! SELF PRIMING! NO BRUSH MARKS!

Duplin Mercantile Co. KENANSVILLE, N. C.



HURRY!

Only 10 more days to enter

FORD'S \$100,000 CAR-SAFETY CONTEST!

700 Prizes

25 New Fords

"The Fabulous Car of the Year" 4-door Custom V-8 Ford Sedan, equipped with Radio, "Magic Air" Heater, Overdrive, and White Sidewall Tires.

5 New Ford Trucks

Heavy Built to Last Longer (Optional) General Duty Model F-5, V-8 engine, stake body, 150-inch wheelbase FORD Trucks, equipped with Radio and "Magic Air" Heater.

Optional as prizes to the top 5 of the 25 car winners who specify preference for a truck on Contest Entry Blank.

25,000 U.S. Savings Bonds

100,000 U.S. Savings Bonds

200,000 U.S. Savings Bonds

200,000 U.S. Savings Bonds

SAFETY CHECK *

SEE YOUR FRIENDLY FORD DEALER TODAY

Here's All You Do!

1. Drive to your Ford Dealer displaying poster shown below.
2. Get a Free Car-Safety Check, Free Safety Inspect and Free Entry Blank.
3. In 50 words or less on entry blank state:

(a) Use only official entry blank obtained at any Ford Dealership displaying the poster shown below. Print clearly your name and address.

(b) Contest is limited to the continental U. S. and Alaska.

(c) Prizes as stated on entry blank, will be awarded on the basis of accuracy, originality and aptness. Judges' decisions are final. Duplicate prizes in case of tie. Entries must be submitted in the name of the registered owner or his designated representative. Only one entry per car or truck may be considered. All entries become the property of Ford Motor Company. Contest subject to Federal, State and local regulations and to contest rules on entry blank.

(d) Winner's names will be posted at all Ford Dealers not later than December 1, 1949.

(e) Contest is open to all residents of United States except employees of Ford Motor Company, Ford Dealers, their advertising agencies or their families.

SMITH CONCRETE PRODUCTS, Inc. KINSTON, N. C. Phone 3412

SMITH CONCRETE VITA-LITE-CONCRETE BUILDING BLOCKS

- Pre-Cast Steps
- Stock Watering Troughs
- State Approved Septic Tanks

We Build To A Standard - Not To A Price

DEALERS: Duplin Mercantile Co. Kenansville, N. C. I. J. Sandlin Company Beaufort, N. C.

FOR SALE

SASH, DOORS, SHEET-ROCK, ROCK LATH, ROCK WOOL, PLASTER, LIME, CEMENT BRICK, MORTAR, PAINTS, TERRA-COTTA PIPE, DRAIN TILE, WHITE ASBESTOS SIDING, ASPHALT SHINGLES, ALL KINDS OF ROLL ROOFING, ROOFING, BRICK SIDING

Z. J. Carter & Son, Weldon, N. C.



Mr. Farmer

WE URGE YOU TO SELL THE REMAINDER OF YOUR

TOBACCO

IN

GOLDSBORO

WHERE THE DEMAND IS STRONG AND

PRICES

ARE

HIGH

THE MARKET WILL CLOSE OCTOBER 27th.

Goldsboro Tobacco Market

GOLDSBORO, N. C.