

DOG TALES

Cover Dog
By TOM FARLEY

ONE dog that gets into more homes in this country than any other is Butch, the ingratiating Cocker pup who humorously graces so many covers of the Saturday Evening Post. Butch, who has chalked up a record of twenty-four appearances as Post cover dog, probably owes his own popularity with millions of magazine readers to the fact that he looks just like the dog next door.

No mere figment of an artist's imagination, Butch is the real life possession of his creator, Albert Staehle—one of America's leading animal artists. Butch has been a member of the Staehle household since he was twelve weeks old, his age now being three and one-half years. Staehle claims that Butch is part "ham" and is very willing to pose tearing up slippers, wearing a raincoat or performing any of the other canine capers that have made him famous. Fan mail from every corner of the globe attests to the fact that Butch is practically an international figure.

A Cocker Spaniel, Staehle claims, is one of the most human looking of all dogs. His face and eyes are expressive and his forehead is high. The artist says that a puppy

looks more like a human than an adult animal, but if you want to draw or photograph a full grown dog, get one just past puppyhood. At that age, they've outgrown their puppy looks and have attained a more mature, but still "human" expression. Butch just never did grow up, Staehle says.

In the ten years that Staehle has specialized in drawing animals, all kinds have been harbored in his Fifth Avenue studios, including roosters, mallard ducks, alligators, bear cubs, and snakes.

Mr. Staehle was born in Munich. His father was Pennsylvania Dutch and his mother Austrian. Mr. Staehle's wife, who is Cuban, has appeared in motion pictures both in this country and in Mexico. Despite this international background, Staehle's artistry is as American as apple pie. His scenes could be laid in any home in any town or city. Hardly a week passes that someone doesn't send him a snapshot of Butch's "double". Perhaps it is for just this reason that the magazine prints extra copies when Butch is to appear. For among Post artists—all top-flight favorites with American readers—Mr. Staehle's covers produce the highest sales.

Coffee Treats for Television Fans



Photo by Neccati

When your favorite television programs are over, good coffee should always be on tap for family and friends to serve with something "special" as a fitting finale to a perfect evening. Any one of the coffee-flavored desserts featured will be just right for late evening refreshments. Easy to prepare and impressive for any occasion are these desserts that combine modern cooking with old-fashioned goodness.

You can serve one or many with fresh, flavorful coffee in a flash. Just measure one teaspoon of soluble coffee (more or less rounded according to strength desired) in a cup, and add freshly boiling water and stir. To make six cups of good coffee, just pour one quart of boiling water on 6 teaspoons of soluble coffee and stir to assure a brew of even strength.

Coffee and Cream Cake is a delicious accompaniment for coffee-flavored ice cream, made simply and quickly by blending 1 tablespoon of soluble coffee with one package of ice cream mix. This is a neat trick that wins compliments every time. For an extra special evening, surprise your guests with Marshmallow Supreme, a simple dessert with a sophisticated flavor of fresh coffee.

COFFEE AND CREAM CAKE

Make your favorite plain cake mix recipe and then use:

COFFEE CREAM FILLING

- 6 tablespoons sugar
- 2 teaspoons soluble coffee
- 3 tablespoons flour
- 1 cup scalded milk
- 1/4 teaspoon salt
- 1 egg yolk
- 1/2 teaspoon butter

Combine first 4 ingredients in a small pan. Stir in milk. Cook until thickened. Place over hot water, cook about 15 minutes. Beat egg yolk lightly, add a little of the hot mixture and return to pan. Cook 2 minutes. Add butter, cool thoroughly.

COFFEE ICING

- 1 tablespoon butter
- 1/2 cup sifted confectioners' sugar
- 1 egg yolk
- 1/2 cup soluble coffee
- 1/2 cup milk

Mix butter and egg yolk. Add sifted confectioners' sugar which has been mixed with soluble coffee. Gradually add milk, beating all the while, until a smooth, creamy consistency is reached.

MARSHMALLOW SUPREME

- 1/2 lb. marshmallows
- 1/2 cup sherry
- 1 envelope unflavored gelatin
- 1/4 cup cold water
- 1/2 cup sugar
- 1/2 cups undiluted evaporated milk
- 2 teaspoons soluble coffee
- 1/2 cup hot water
- 1/2 cup cold water
- toasted almonds

Cut marshmallows in quarters and let them stand overnight in sherry. In top of a double-boiler, dissolve gelatin in cold water. Cook for 10 minutes, stirring constantly. Dissolve soluble coffee in hot water. Add to the milk mixture. Fold in marshmallows. Pour into one quart mold rinsed with cold water and chill. Unmold, garnish with whipped cream, cherries and almonds. Yield: 6-8 servings.

Split-Level House for Sloping Lot



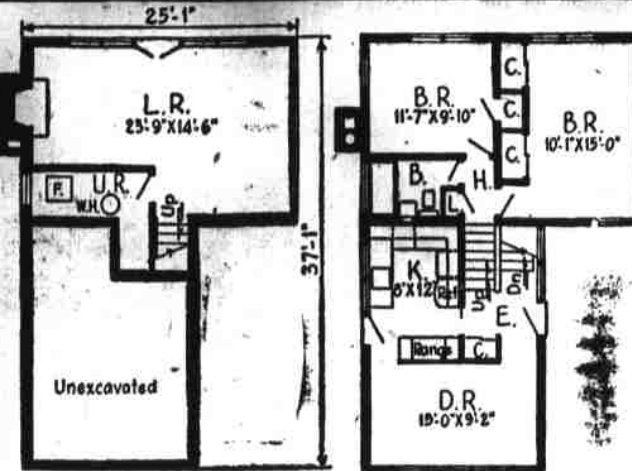
A split-level house is designed to take advantage of the unevenness of a sloping lot. Sections of the house are at different levels and are connected by short stairways.

This example of a split-level house has been selected by American Builder magazine, 30 Church St., New York 7, N. Y., as its Plan No. 37. The magazine finds special merit in the way the various living zones are separated from each other.

All rooms in the dwelling are easily accessible from the hall way. The dining room-play room and the kitchen are on the half-way level.

The living room, which extends across the full width of the house, is a half-flight down from the hall. The bedrooms, a half-flight up from the hall, are directly above the living room.

The one-story part of the house faces the street and the two-story part overlooks the rear yard. Exterior sidewalls are a combination of horizontal and vertical siding, forming an attractive structural pattern.



For added exterior appeal a roof of softly harmonizing color is suggested. Extended roof eaves shelter windows from the sun where necessary. (Detailed estimating plans and a complete home planning pack of building information are available from American Builder, 30 Church St., New York 7, N. Y. Refer to Plan No. 37.)

Removal of Old Roof Usually Not Necessary

Asphalt shingles are widely used for new roofs on old barns and other service buildings. A basic advantage of this type of material is that it can be applied on top of most old roof surfaces. Removal of the worn roofing, which would be an added expense, is not necessary.

Farm-owners are advised that proper application of asphalt shingles is necessary if the material is to give the full service of which it is capable. Nailing is important. Six nails are recommended for each three-tab, square butt strip shingle. In areas where high winds are prevalent, strip shingle tabs can be fastened down with quick-setting asphalt cement.

New Furniture Good in Design

An increase in the amount of popular-priced modern furniture of good design has been noted at recent furniture shows, where dealers were given previews of furniture pieces to come on the market in the immediate future.

Ranch-style furniture, intended especially for the many single-story houses being built today as well as for apartment living, is expected to be one of the most popular types. It is an adaptation of American Provincial design.

Beautiful wood veneers, frequently of cherry, oak, birch or maple, give warmth and distinctive appearance to much ranch-style design. Veneers of many different imported and domestic woods are used not only for attractiveness but because hardwood plywood, of which the veneers are a part, resists splitting and warping more than solid wood does.

The large windows found in modern houses also are having a distinct influence on furniture design. Big windows leave less wall space for furniture. At the furniture show in Chicago, small end tables intended to help solve this difficulty were shown.

Panels Attractive, Easy to Keep Clean



Wood veneer wall panels for homes combine handsome appearance with easy cleaning and maintenance. The paneling pictured here exhibits fully the natural pattern of the wood grain, adding a luxurious touch to the room. The only upkeep usually required for wood veneer wall paneling with a natural finish is rubbing with a waxed cloth every few months.

Make Roofs Safe From Flying Sparks

For all buildings in areas where there is any possibility of flying sparks, either from outdoor fires or from chimneys, fire-resistant roofing is recommended as a safety precaution.

The material most frequently used for this purpose is asphalt roofing. Approved by Underwriters' Laboratories, asphalt shingles will not be kindled into flame by chimney sparks or airborne fire brands.

CLEAN COUNTRY

Ninety percent of the world's bathtubs are in the United States.

ATHLETES FOOT GERM HOW TO KILL IT.

IN ONE HOUR

IF NOT PLEASED, your 40c back from any druggist. T-4-L is spec-

Measure Shadow To Measure Building

Here's an easy way to measure the height of a building without climbing on the roof.

Drive a pole into the ground where it will be fully exposed to sunlight. Make sure the pole is vertical. When the shadow cast by the pole is equal to the pole's height, measure the length of the shadow cast by the building. This will equal the building's height.

GOOD AS NEW

Surfaced with the finest wood veneers, a 200-year-old cabinet made for Louis XV, King of France, has been perfectly preserved in the Louvre in Paris.

ially made for HIGH CONCENTRATION. Undiluted alcohol base gives great PENETRATING power. KILLS IMBEDDED germs on contact. NOW at Kenansville Drug Store

Autumn Classic



You'll be snug at the stadium, debonair on the boulevard in this free-swinging greatcoat that's lined with crimson crepe and interlined with lamb's wool. Tailored from Fortmann's gray broadcloth, the coat wins Cosmopolitan magazine's fashion endorsement for its cuffed bathing sleeves and smooth, moulded shoulder line. Its high collar is rolled and notched and the pockets are slit into the side seams. The coat is made by M. J. Haberman Sons and sells for about \$80.00.

Subscribe To The Times

GET IN LINE!
Subscribe Now
Or Renew To
THE DUPLIN TIMES
So As To Not Miss Out
On Our
"DUPLIN STORY"
Edition

HAPPY DAYS ARE HERE AGAIN AT

FAIRMONT

The Old Reliable Tobacco Market

And The Border Belt's Biggest and Best Tobacco Market. Fairmont Sold Tuesday, August 1, 1950,

1,003,650 Pounds... Money Paid Out, \$587,900.54

AVERAGE \$58.61

THE HIGHEST OPENING IN THE HISTORY OF THE THE FAIRMONT MARKET

Tobacco Growers, grade and sell your tobacco now in Fairmont. With World War three expected to open at any date it is not good business for tobacco growers to keep their tobacco in pack houses.

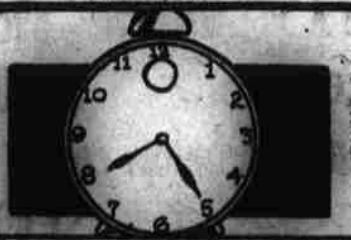
WE ARE NOT CROWDED—NOT A PARKING METER IN TOWN

Fairmont Tobacco Market

C. B. STAFFORD, Sales Supervisor

TELL ME....

DOES A CLOCK RUN THE SAME DURING THE DAY... AS IT DOES AT NIGHT?



NO! IT RUNS SLOWER IN THE DAYTIME THAN AT NIGHT... DUE TO THE DIFFERENCE IN TEMPERATURE!

WHAT IS THE LIFE SPAN OF THE OLIVE TREE?

MORE THAN 1,000 YEARS!! OLIVE TREES PLANTED IN TIMES IN THE 7th CENTURY'S WILL BEAR

WHO ORIGINATED BUTTER?



BUTTER WAS DISCOVERED BY AN ARABIAN HORSE MERCHANT WHO DROPPED A DROP OF MILK...THE HORSE'S SALLA CHURNED THE BEST BUTTER ON RECORD

DO THE CLOUDS CONTAIN GOLD?

YES! HOWEVER, MAN HAS BEEN UNABLE TO TAP THIS GREATEST POTENTIAL SOURCE OF GOLD THAT HAS BEEN ESTIMATED TO HOLD