

Duplin Implement Dealer Announces New Tractors

Two new heavy duty 2 and 3 plow general purpose tractors—the John Deere Models '50' and '60' were announced Saturday, July 19 by Johnson Cotton Company.

At the Announcement Day, which included the first public showing of the Model '60' L. B. Fussell stated these new tractors replace the Models 'A' and 'B' in the John Deere line.

Among the major advancements featured on the new tractors, Fussell listed duplex carburetion, 'live' power shaft, 'live' high pressure Power-Trol, quick change wheel tread, effortless steering and new, more practical styling. These new features he added, mean stepped up tractor performance, easier handling, greater comfort and convenience, and better all around economy.

LIVELIER POWER
Duplex Carburetion, according to Fussell, is a revolutionary development in tractor engines. Through a new type, double barreled carburetor, fuel is metered in identical amounts to each cylinder, providing livelier, more flexible power, smoother performance and faster cold weather starts as proved in intensive laboratory and field tests.

A New 'Live' Power Shaft is independent of the transmission clutch and provides continuous power for operating power driven machines. Fussell pointed out that this feature reduces clogging of power driven machines to a minimum, eliminates much of the clutching and shifting formerly required, and speeds up all power take off jobs. He also added that the new tractors with the 'live' power shaft will pull and operate any power driven machine within their power range without the need of an auxiliary engine. The new power shaft has an independent clutch which protects the system and cushions shock loads.

A New 'Live' High Pressure Power Trol, also direct engine driven, operates independently of both the transmission clutch and the power shaft. Fussell said that when operating equipment requiring constant hydraulic pressure, such as a manure loader, the 'live' power feature will save the operator up to 40 per cent of the time and effort formerly required in clutching, and shifting gears. Fussell added that the new tractors have a higher speed hydraulic pump which increases the lifting capacities of the hydraulic system as much as 114 per cent over the older models.

New Quick Change Wheel Tread
Rear Wheel Tread adjustments are much easier to make in these new models, according to Fussell. To adjust the rear tread, the operator jacks up one wheel at a time, loosens three clamp screws, tightens two jack screws, and turns an adjusting nut to get the tread desired. Fussell continued, that when the desired tread is obtained, jack screws are backed off and the three clamp screws tightened, locking the wheel in position. Both wheel hub and wheel clamp are tapered to assure positive locking.

Rose Hill Locals-Society And General News

Mrs. Robert Fields, Duplin Times Representative Telephone 243-2. Please Call In Your News. Mrs. Fields Will Receive Subscriptions and Advertising.

Methodist Group Spend Saturday At White Lake

Mr. Gordon Sanderson, Intermediate Sunday school teacher, carried his class to White Lake for the day on Saturday. He was assisted by Mrs. J. L. Fussell, Miss Mary Ann Fussell and Mr. Manly Sanderson.

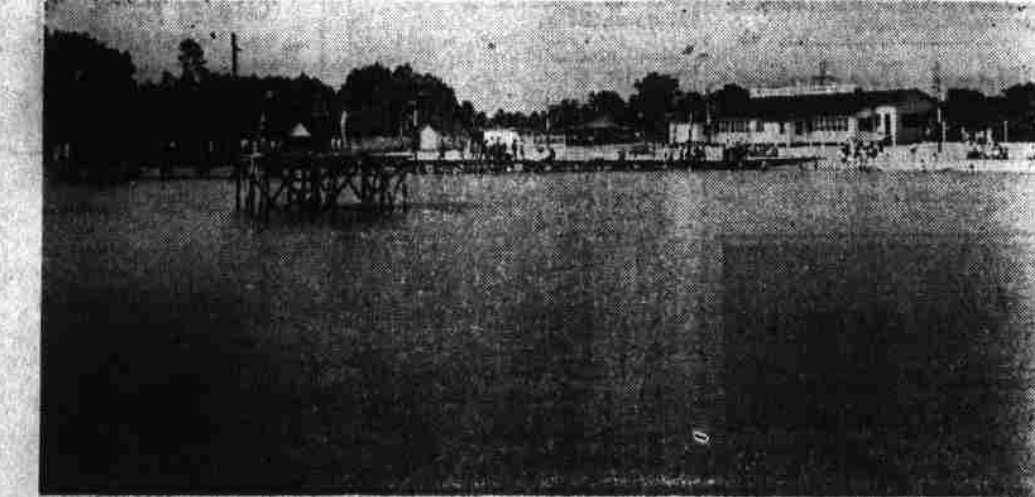
A picnic lunch was spread at noon. The following members enjoyed the day, Misses Nancy Fussell, Carolyn Fussell, Margaret Cotton, Sue Fussell and Mary Lou Fussell and Mr. Morgan Pope and Daniel Fussell Jr.

Mrs. Townsend Is Feted At Layette Shower

On Monday evening Mrs. Thomas Townsend was honored with a surprise Layette shower at the home of Mrs. Francis Townsend in Wallace. She received many useful gifts.

Two tables of bridge and 1 table of canasta were played.

When the guests arrived ice cream, cake and nuts were served. After games of bridge and canasta were played, cold drinks and potato chips were served.



Lake Tut Is Interesting These Days Especially Fish Feeding After Dark

People from far and near are following the signs reading 'Lake Tut. One finds most any type of relaxation and entertainment, swimming, sunning, picnicking, shade and seats to relax, pets for the children to see jitterbug contest and most interesting is the fish feeding when the lights are on from 8 p. m. to 10 p. m. on the board walk. That is a sight well worth a trip to Lake Tut any night.

Each Wednesday night there is a jitterbug contest. Last Wednesday the winners were Pop James of Rose Hill and Marilyn Williams of Wallace. The dance hall was packed with people. No one seemed to mind the heat.

On Sunday afternoon a swimming contest is held. Last Sunday 1st prize went to Brownie Salmon of Wallace and Ed Lineasy of Wallace winning 2nd prize.

Mr. Bernard Tut Fussell reports that last week end he had the largest attendance since the official opening.

Mr. Fussell offers nice picnic tables and grounds to the public free of charge.

Personals

Miss Evelyn Barden of E. C. C. spent the week end with her parents Mr. and Mrs. T. A. Barden.

Mr. and Mrs. John Cooper, Jr., and family and Mr. and Mrs. Jack Dail and daughter spent the week end at Topsail Beach.

Mrs. Agnes Fussell, Mrs. Margaret Cooper and Mrs. Lucy Farrior of Rose Hill, Mrs. Clute Ribbenark and Miss Annette Robinson of Wallace plans to leave Sunday to attend the Huckleberry Mt. workshop camp.

Mr. and Mrs. John W. Mallard and son of Raleigh, Mr. and Mrs.

Announce Birth

Mr. and Mrs. Ray M. Williams of Savannah, Ga., announce the birth of a son, on July 20. Mrs. Williams is the former Patsy Williams of Rose Hill, N. C.

Duplin-Asbury Districts Meet At Rose Hill

On Monday evening, July 21, the Duplin and Francis Asbury sub-districts, met jointly at the Rose Hill Methodist Church at 7:30.

After devotional and the business session at the church, the group went to Lake Tut where swimming was enjoyed and a picnic supper was spread.

A good attendance was reported.

B. K. Bradshaw

B. K. Bradshaw of Rose Hill died Wednesday afternoon, July 16 at his home. Funeral services were held at the Baptist Church in Rose Hill Friday at 10 a. m. and burial was in the Peterson Cemetery near Rose Hill. Surviving are three brothers, L. B. and Hicks of Rose Hill and Rex Bradshaw of Willard; and a sister, Mrs. C. C. Carter of Rose Hill.

SAFETY SHOWER—Testing

a shower without taking one is accomplished at General Electric's Schenectady, N. Y., research laboratory with this special shower tester. The jets of water are ready for use in the event a scientist's clothes catch fire or to neutralize an acid burn. Seldom used, the devices are checked periodically.

Southern Pulpwood Forester Urges More Expenditures For Forest Fire Control

Atlanta, Ga.—The South's \$3,000,000,000 forest products income could be doubled if public expenditures for fire control were increased from five to 11 cents an acre.

That is the opinion of H. J. Malsberger, general manager and forester for the Southern Pulpwood Conservation Association. It is contained in a comprehensive forest fire report issued today by the pulpwood organization.

"In spite of the vast contributions forest products are making to the South's economy, only one-half enough money is being appropriated to protect this resource from fire," Mr. Malsberger said. "On the average, only two-fifths of a cent of each public dollar appropriated is allotted to fire control."

Citing fire control progress during the past 20 years, Mr. Malsberger said 78 per cent of the South's woodlands are now protected from fire. He added, however, that 41,000,000 acres are not yet guarded by an organized fire control system.

"When this remaining acreage is protected, and with good forest management practices, we can expect fully stocked stands growing wood at full capacity," Mr. Malsberger declared. "It will mean more industry, more employment, more payrolls, safer investment in forest lands, expansion of the tax base, and a better living."

Copies of the report, entitled Forest Fires—Your Loss, may be obtained from the association's office, 15-6 First National Bank Building, Atlanta, or from any of the South's pulp and paper mills. Attractively printed in two colors, the publication traces the history of the woods burning custom, cites the causes of fires, discusses damages and prevention methods. Charts show the status of the fire situation in individual southern states.

But Actions Count



Graham Blanton is attending the 4-H Club week in Raleigh this week. Graham is our Rose Hill representative.

Charles Hall of Winston Salem, visited his parents, Mr. and Mrs. Heman Hall Wednesday end Thursday.

At Lake Tut

The Attendance at LAKE TUT, ROSE HILL, N. C. is increasing daily, especially in picnic gatherings. All picnic tables and grounds are free. No charges.

Be sure and visit LAKE TUT from 8 p. m. til 10 p. m. while lights are on and see the fish while being fed.

Don't forget Jitterbug contest each Wednesday night and Swimming contest every Sunday afternoon.

Lake Tut

Rose Hill, N. C.

Safety Check Reveals One Out Of Every Three Vehicles On Roads Are Unsafe

WASHINGTON: Preliminary reports of a nationwide "Safety-Check" covering more than one half million cars and trucks, reveal 32.8%, or nearly 1 out of every 3, are unsafe due to needed service attention to one or more parts affecting safe operation.

In announcing results of the "Safety-Check," W. F. Hulstader, Chairman of the Inter-Industry Highway Safety Committee, and Vice President of General Motors, said, "Vehicles today apparently are not as safe as a year ago when a similar sample check showed that 30.2% were in need of maintenance attention." The results of this check indicate the need for all owners to have their cars "Safety-Checks" periodically.

"With an estimated 40 million vehicles on the highways, he stated 'every motorist should make certain his car is in safe operating condition all of the time. But that is not enough. In addition to starting holiday or vacation trips in a safe car, make certain you drive in a safe manner.'

The "Safety-Check" program was conducted during the month of May by the Inter-Industry Highway Safety Committee in cooperation with the National Safety Council. Results were obtained on the basis of "Safety-Checks" made by the nation's automobile, truck and tire dealers of 551,296 vehicles in 21 states and the District of Columbia. Ten items affecting safe vehicle operation were included in the voluntary check.

Brakes and Lights Head List of

Wm. E. Wheeler

William Edward Wheeler, 89, of Route 1 Wallace died at his home Thursday afternoon. Funeral services were held on Saturday at the Hopeville Baptist church. Interment was in Hopeville Cemetery. He is survived by his son Preston Wheeler, one daughter, Mrs. L. W. Garris of Burgaw, one brother, A. J. Wheeler of Elm City, one sister, Mrs. L. C. Piner of Burgaw, two half sisters, Mrs. Letha Forbes of Wilson, Mrs. Margie Ebers of Greenville, 10 grand children and 20 great grandchildren.

Half an acre of land produced \$406 worth of cabbage for Lee R. Wilson, Route 1, Lake Lure, according to F. E. Patton, Rutherford county agent.

Dates for the 1932 North Carolina State Fair, to be held at Raleigh, are October 14-18.

County Agent S. C. Winchester of Pitt County reports that small grain yields in that area were unusually good this year. Many growers reported yields above 40 bushels per acre for wheat and 80 bushels per acre for oats.

A conference of burley tobacco workers will be held near Waynesville, August 20-22.

SPECIALS

AT

Johnson Cotton Company

ARSENATE OF LEAD
PARIS GREEN
HAND AND HORSE DRAWN DUSTERS
AND SPRAYERS
TOBACCO STICKS
TOBACCO SLEDS AND TRUCKS
Special Price on Blue Ribbon Three And Four Ply
TOBACCO TWINE, 5 Lb. Packages — \$3.87
(TAX INCLUDED)
TOBACCO BARN FLUES
BUCKEYE TOBACCO CURING SYSTEMS
THERMOMETERS

JOHNSON COTTON COMPANY Of Wallace Inc.

WALLACE, N. C.

Cash If You Have It Credit If You Need It

It's Here...the New JOHN DEERE 60

...with Duplex Carburetion
...Live Power Shaft
...Live High-Pressure Power-Trol
...Quick-Change Wheel Tread
...Effortless Steering and
...Many other new features and major improvements

We're proud to announce the all-new John Deere "60" and "50" Tractors—successors to the famous Models "A" and "B." We have a "60" on display now. Come in and inspect it. The harder you are to please, the more impressed you're going to be and the sooner you'll want to get your hands on the wheel and put one of these tractors through its paces in the field. That's when you'll know they're truly great new tractors.

See it TODAY!
Johnson Cotton Co.
OF WALLACE INCORPORATED
Cash If You Have It Credit If You Need It