

### 85th State Fair October 14-18

Raleigh — An official invitation for North Carolinians to enter exhibits in, and attend the 1952 N. C. State Fair has been issued by Governor W. Kerr Scott and Commissioner of Agriculture, L. Y. Ballentine. The fair, which will have its 85th renewal here October 14-18, is a division of the State Department of Agriculture.

and finer facilities for your service and pleasure. Governor Scott termed the State Fair the greatest of all annual get-togethers in N. C. for a reflection of the yesterday, the accomplishments of today, and the trend of the tomorrows in our State.

The Governor took note that he first participated in the State Fair as a boy exhibiting a few ears of popcorn, and said 'as I prepare to return to the ranks of private citizens, I pledge my continued interest and patronage of the Fair and commend it to others — as a panoramic center of the inexhaustible resources of North Carolina.'

Commissioner Ballentine said there will be more to see, enjoy and learn at this year's inspiring spectacle of North Carolina's accomplishments. He listed expanded and improved facilities including the big new livestock judging and exhibition arena which is expected to be in partial use this year, the Youth Center where junior exhibitors will be quartered, and greatly enlarged and more accessible parking lots.

facts that make North Carolina the No. 1 State in the South; and a meeting place for the exchange of information and ideas.

### Mann Predicts Cotton Price Rise To 40 Cents

Raleigh — As North Carolina farmers prepared to harvest their No. 2 money crop, M. G. Mann, general manager of the N. C. Cotton Growers Cooperative Association, predicted that cotton prices will rise to 42 cents or more by next May 1.

He based his forecast on size of the 1952 crop, growing conditions, anticipated domestic and foreign demand, and carry-over from the 1951 season, all important factors in influencing cotton prices.

Since 1945 Mann has made a prediction each September 1 as to prices growers may expect to receive during the marketing season for their lint. In each year his prediction has been reached and in several years exceeded.

On September 1, 1945, he forecast 30-cent cotton before the following June 1. At the time of the prediction, cotton was selling at approximately 20 cents a pound. Those who held their cotton until later in the marketing year realized 30 cents or more.

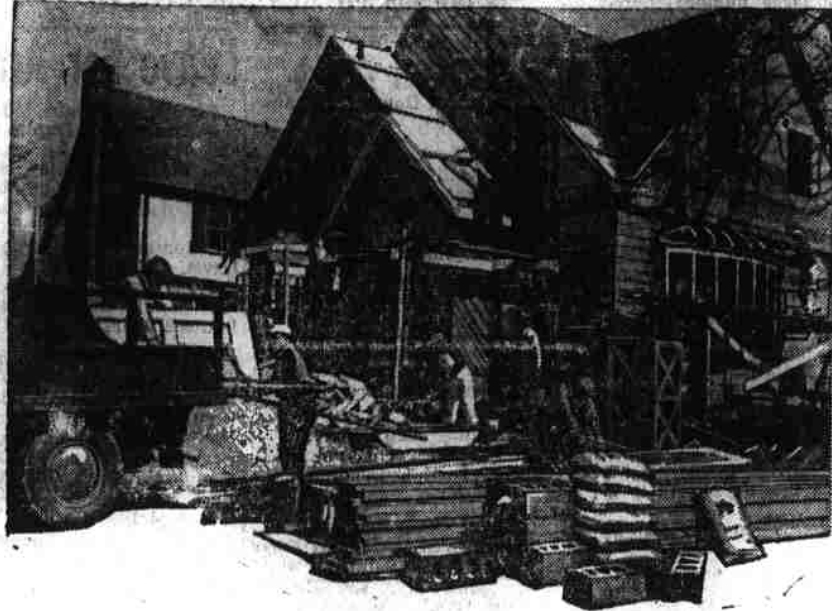
### Rural Newcomers Invited To Fair

Newcomers to rural North Carolina during the past year will again be guests of the N. C. State Fair in 1952, says Robert W. Shoffner, assistant director of the State College Extension Service. Free tickets good for gate admission any one day of Fair Week October 14-18 will be sent to all who request them and who qualify as 'new farm

citizens. Shoffner, who is assistant to Dr. J. S. Dorton in the management of the Fair, stated that all members of a family who moved to a North Carolina farm from another state or foreign country since October 15, 1951 are eligible to receive the complimentary tickets. The names of the 'rural newcomers' may be submitted by card or letter to: Manager, N. C. State Fair, Box 1388, Raleigh, either by a member

of the family or by one of their friends or neighbors. Requests should include the names of all members of the family, and their address. Shoffner said, 'and agricultural workers are invited to submit lists of all new farm families with whom they are working on the local level. We want to welcome these rural newcomers to North Carolina, and what better way can it be done than to invite them to the Fair,

the biggest event held annually anywhere in the State from the standpoint of attendance and participation.' The Extension Service and Fair leaders explained that when names requested will be forwarded to the farm or home agent in the county where the new family has settled. The 'Newcomers' will be written where to pick them up after identifying themselves and satisfying



### YOUR DREAM HOUSE...

comes true for you and your loved ones when you build with our finest quality materials. We carry a complete line of lumber and finish trim—Also doors, windows, wallboards, and Roofing. We have quality Paints and Varnishes for inside and outside. Our stock contains Cement, Lime, and Plaster materials. We sell Insulation materials, too.

NAILS — KITCHEN CABINETS — HDWE.

Call WILMINGTON 7747

### E. W. GODWINS' SONS

"Everything To Build The Home"

Castle Hayne Rd. Wilmington, N. C.

## 3% On Savings

EACH ACCOUNT INSURED UP TO

\$10,000.

Money Available For Withdrawal On

Demand At Any Time.

## MUTUAL

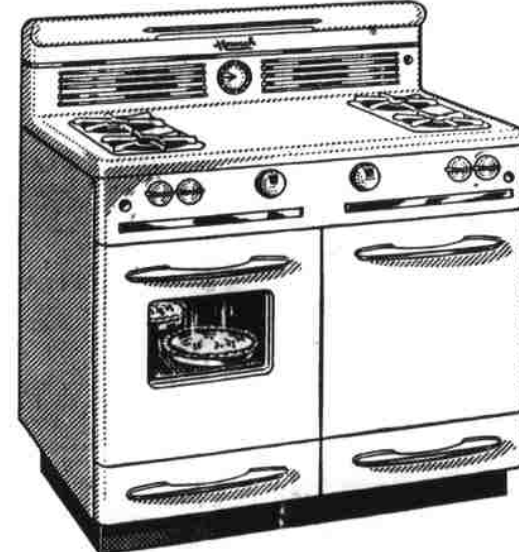
BUILDING & LOAN ASSOCIATION

114 E. Gordon St.

Kingston



For  
finer **COOKING**  
and better **BAKING**



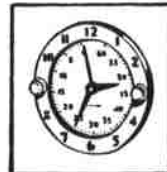
### See this new MONARCH Gas Range

This range, with all its many conveniences, will be a boom to your cooking ambitions. Two large capacity ovens with "Lo-Temp" controls that assure the right amount of heat. Window in oven door gives you an eye-full of what's baking.

With 2 burners on either end, you have a convenient working space on top of range. "Hi-Lo-Reflex" burners provide sure action and economical operation. "In-a-drawer" drop front broiler has smokeless porcelain pan. Utensil storage in bottom drawer. Range is beautifully finished in durable white porcelain enamel with chrome trim.

..tops in performance and beauty

No guess-work with this electric-clock-timer. Easy to set, bell rings when food is done. . . Large ovens, with safety-stop sliding shelves, will not tip when fully extended. . . Simple to clean porcelain high drip well and chrome burners.



## HOLT - SIMMONS COMPANY

KENANSVILLE

# SELL YOUR TOABCCO AND SHOP IN CLINTON

## Eastern Carolina's Fastest Growing Shopping Center

TRADE WITH THESE LEADERS THEY APPRECIATE YOUR BUSINESS

### COOKE MACHINE SHOP

Prompt and Courteous Service

### CLINTON MOTOR COMPANY

Lincoln & Mercury Dealer. Fine Selection Of Used Cars

### CLINTON TRUCK & TRACTOR COMPANY

Farmall Tractors—Sales and Service

### CITY APPLIANCE COMPANY

Sales—Westinghouse—Service

### DIXON-HOUSE MOTOR COMPANY

404 Lisbon St.—General Auto Repairs

### DEVANE GAS & APPLIANCE Co. of Clinton, Inc.

Rulane Gas—Tappan Ranges—G. E. Appliances

### CLINTON MEMORIAL WORKS

Manufacturers of fine Memorials in Marble and Granite.

Phone 3487

Beside Radio Station on Wilmington Hi-way

### DOSSENBACH'S FINER FURNITURE

Always A Saving

304 Wall Street

### ECONOMY AUTO SUPPLY

Goodrich Tires, Tubes & Accessories

### CLINTON STYLE SHOPPE

Ladies Ready To Wear

### P. S. CARR COMPANY

Good Line Of Used Cars and Repair Service

### H. J. UNDERWOOD MILLING COMPANY

Dealer in Corn, Wheat, Barley and Oats

### BLACKWOOD ASSOCIATE STORE

Crosley & Coolerator Home Appliances

### BELK-WILLIAMS COMPANY

Clinton's Leading Department Store

### S & B OLDSMOBILE COMPANY

Cadillac & Oldsmobile Sales & Service

### RAWLS JEWELRY

"The Bride's Store"

### THE GLAMOUR SHOP

"Go Glamour, Dress Well, Save Money"

### ED FLEISHMAN & BROTHERS

Carolina's Leading Clothiers

### SAMPSON HARDWARE

Clinton's Finest Hardware Store

### WIMBISH BROTHERS COMPANY

Clinton's Newest Department Store

### POWELL'S SHOE STORE

We Shoe The Family

### FIRST-CITIZENS BANK & TRUST COMPANY

### SCHERLYN STUDIOS