

Lady in Blended, N. Y., visits a swimming instructor, the other has learned a lesson in 15 years. Maybe he's just blasé about taking the plunge.

Another Commodity for Port of Wilmington



Cane Blackstrap Molasses is the newest commodity to be added to the growing list of imports for the Port of Wilmington, N. C. For the first time since 1941 Blackstrap Molasses is again being imported into a North Carolina port by American Molasses Co. of N. C., Inc. Blackstrap Molasses is used principally by the feed mills and Tur Heel farmers as a mixture in sweet feeds. It is also used by the farmer as a grass silage preservative and as an insecticide mix for poisoning the boll weevil, the cutworm, and many other crop destroying insects. Its availability at Wilmington results in a savings in freight to the receivers of Blackstrap as against the freight rate formerly paid from more distant ports of entry. Delivery to the feed mill and farmer is made in tank cars, tank trucks, and also in 55 gallon wooden barrels. Pictured above is a workman loading a tank truck for distribution to a feed mill somewhere in North Carolina.

Needed By Army Paratroopers

Today more than ever your United States Army needs qualified men for one of the most interesting and well paying occupations available. That of an Army paratrooper. As a jumper, you'll receive added monetary allowances as well as filling an important and self-satisfying position. To be eligible you must be within the ages 17-34 and be in good physical condition. To

In order to provide faster service, in the future, the called party will give the operator here only the number of the operator in the distant city and when the distant operator comes on the line, he should give her the details of the call. This means the operator here will not have to make a record of the call and can handle it faster. The efficiency of modern telephone service is dependent upon the public's understanding how to use it best, said Mr. Vann in urging cooperation with the new procedure.

Mr. Vann also pointed out that since World War Two the number of telephones in the Warsaw Group has been more than doubled. This larger volume of local usage also has resulted in much larger long distance usage. In order to meet these demands for fast and dependable long distance service, much new equipment has been installed here and in other exchanges.

The large expenditure for additional long distance facilities, and improved operating procedures have enabled the telephone company to constantly provide faster and more dependable long distance service to more and more people, Mr. Vann said.

check your qualifications see your local Army and Air Force recruiter or come in to the courthouse in Clinton to see the special airborne team between the hours of 8:00 a.m. and 12:00 noon on May 24. This team is from the famed 82nd Airborne Division at Fort Bragg. They will be able to give full details on qualifications and the type of training that you will receive in the airborne. They will be able to answer any questions that interested persons may have.

Downy Mildew In Cucumbers

By V. H. Reynolds, County Agent. We have been notified by the Plant Disease Warning Service that downy mildew was found on commercial cucumbers in the Charleston, S. C. area on May 10. Downy mildew was much better established in the fields observed than it

has been in past years at this early date. Farmers who have commercial cucumbers should begin treating with Tribasic copper sulfate dust containing 5 per cent metallic copper. Dust once every 10 days and after each rain. Use 15 to 20 pounds of dust per acre early in season and 25 to 30 pounds per acre when plants are larger. Growers who have planted resistant Santee and Palmetto varieties of cucumbers probably will not need

to dust. However, all other commercial varieties of cucumbers and pickling cucumbers are susceptible and dusting will pay if weather conditions favor early establishment and development of the disease. The wise man at eye on good terms with his stomach, his science and his wife. The man who wastes his time has little else to waste.

For CORONER

I hereby announce my candidacy for CORONER of Duplin County, subject to the will of the voters in the Democratic Primary.

Your vote and support will be appreciated.

Hix Bradshaw
Rose Hill, N. C.

Carolina Telephone New Procedure Speeds Long Distance Telephone Service

New procedures to enable telephone subscribers to receive even better and faster long distance service on calls not completed on the first attempt were announced here today by W. Y. Vann, local manager of the Carolina Telephone and Telegraph Company.

When the "called party" here is not available to talk on a long distance person-to-person call, the operator at the originating point of the call leaves her number, the number of the calling telephone and the calling party's name, if volunteered. This will continue to be done. The changed procedure involves

what will happen when the called party is ready to talk. At present, he contacts the long distance operator, gives her the details of the call and she relays them to an operator in the distant city.

See Us For

Asphalt roofs for stores, factories, homes - applied by experts. Asbestos and insulated siding, metal gutters, rockwool insulation and weather stripping installed by our expert mechanics.

We manufacture all types of window units from West Coast Lumber. Ron Oil Aluminum Folding Awnings any size.

Use our easy payment plan up to 36 months to pay. Estimates gladly furnished without obligation.

BROOKBANK INSULATING & ROOFING CO.
P. O. Box 831 Railroad St.
Office Phone 2856 Home Phone 2081
CLINTON, N. C.

We Are Now Able To Give You Fast Service On


WEAVING

Moth holes - Tears - Burns - We also specialize on alterations on ladies and mens garments.

Rholey Tailoring Company

27 So. Front St.
Wilmington, N. C.

(POLITICAL ADVERTISEMENT)



SCOTT GETS THINGS DONE

As your Governor, he got roads built . . . hospitals built . . . and new schools built.

SCOTT IS A BUILDER . . . first, last and always!

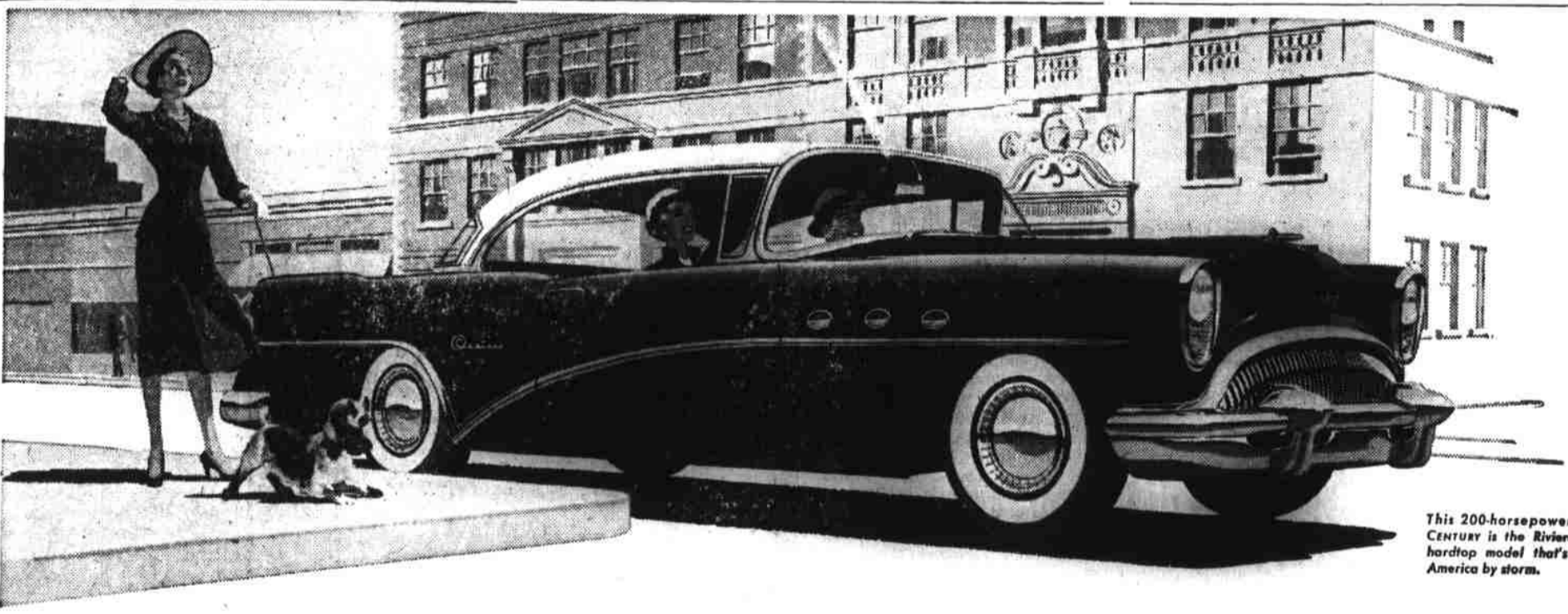
As your United States Senator, Scott will be in there pitching, through the last inning, to build a safer and more prosperous world and nation for all of us.

Scott is experienced in business, and experienced in the art and science of Government.

For the sake of all the people, let's return this experienced builder to public service—a builder who sticks to the real issues and refuses to stoop to mud-slinging.

Vote For A Brighter Future... VOTE FOR KERR SCOTT

SCOTT FOR SENATOR Headquarters
Terry Sanford, Campaign Manager
Carolina Hotel, Raleigh.



This 200-horsepower Buick Century is the Riviera—the hardtop model that's taking America by storm.

Live wire that really looks it

(One reason why Buick is such a big success this year!)

ITS sports-car lines tell you there's lift and spirit here enough for any man. Even standing still this glamor car looks alive. And that look-of-tomorrow styling that's part and parcel of every new Buick—that sweeping panoramic windshield with the dream-car slant—all that says there's action here, and plenty of it. But just note the name "CENTURY" emblazoned on its rear fender, and you can take it as gospel that this is a performance car of the very first water. It's the livest of the live wires—the highest-voltage Buick in the line. It is instant on getaway, a joy in cruising,

a breeze on hills—and a honey of a friend in the added safety of its plenty reserve power always on hand for sudden needs. It is, in fact, a 200-horsepower performance car, and priced far below it—the highest-powered car at its price in the land. With this great-powered good-looker setting the pace—and with equally impressive SPECIALS, SUPERS and ROADMASTERS adding to the excitement—is it any wonder Buick today is outselling every other car

in America except two of the so-called "low-price three"? Come in and try one of these gorgeous new Buicks. With the prices we're quoting, you can make the buy of the year this very week.

BUICK
Sales are Soaring!



CAN YOU SEE • STEER • STOP SAFELY?
CHECK YOUR CAR—CHECK ACCIDENTS

The stunning Buick Convertible—shown here in the High-powered Century model—is available in all four Buick Series, including the low-price SPECIAL.

LOTUS
PERFECT COOKING
RICE

EXTRA LONG GRAIN

RICE

WORLD'S FINEST RICE

MILTON BERLE STARS FOR BUICK—See the Buick-Berle Show Tuesday Evenings

MINCHEW BUICK COMPANY
Wallace

WHERE BETTER AUTOMOBILES ARE BUILT BUICK WILL BUILD THEM