

Two Sections  
16 Pages  
This Week

# Duplin Times



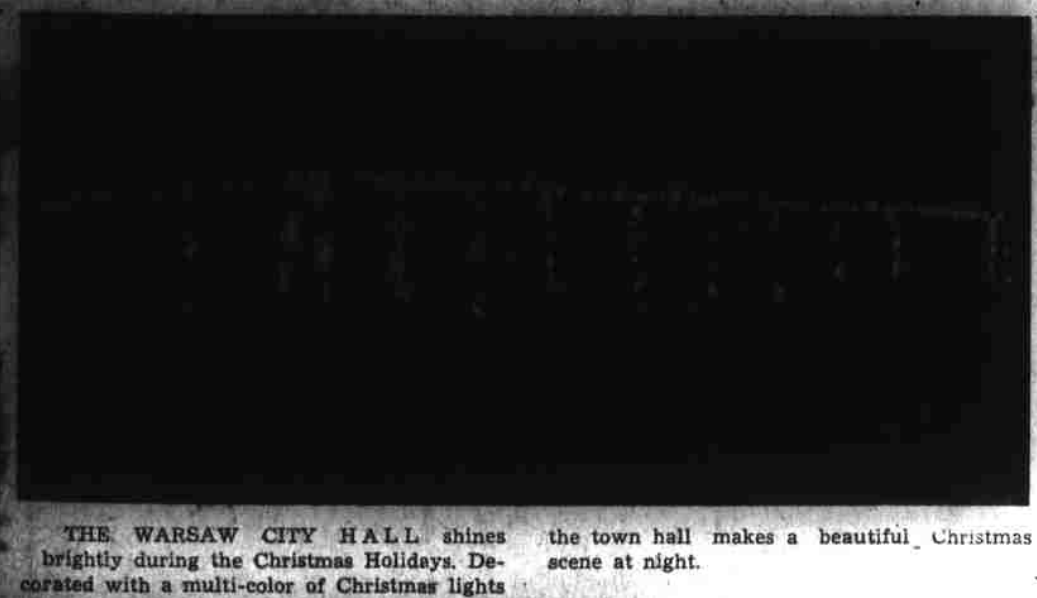
Straight from the Shoulder — Right from the Heart of Duplin

VOLUME XXVI No. 50

KENANSVILLE, NORTH CAROLINA. THURSDAY DECEMBER 24, 1959.

SUBSCRIPTION RATES \$3.00 per year in advance. Single Copies, 10¢ outside this area in N. C.; 5¢ outside N. C.

PRICE TEN CENT



THE WARSAW CITY HALL shines brightly during the Christmas Holidays. Decorated with a multi-color of Christmas lights, the town hall makes a beautiful Christmas scene at night.

## IF JESUS HAD NOT BEEN BORN

By: D. E. Pankerson, Warsaw

Have you ever stopped to think what our world might be like if Jesus had not been born? Amidst the glitter of the tinsel and the jingling of the bells at Christmas time we have always sought to commemorate the birth of our Lord into the world. And sometimes, maybe, we take his coming for granted. What if he had not come?

If Jesus had not been born we would have little revelation of God, and what we did have would be meaningless. As Christ is the key to the Old Testament it would have no complete interpretation. The world of nature would be a jumble. It seems to reveal a God of power and wisdom and goodness, but without Christ we would know little of his Person. We would not know that he loves sinners and is willing to give his life for their redemption; that he loves all the people in all the world. There would be no understanding of Psalm 23 and Isaiah 53. Men would still be crying, "Show us the Father," for no one had said, "He that hath seen me hath seen the Father."



A religious scene at the Warsaw Methodist Church shown above is one of the outstanding religious Christmas scenes in Warsaw. The scene shows the Biblical characters around the manger with the Christmas Star in the background.

## TIMES SPORTS

By Joe Costin

### BEULAVILLE DEFEATS WALLACE-ROSE 77-71 IN DOUBLEHEADER

Coach Billy Bostic's Beulaville boys and girls closed their pre-holiday basketball slate with unbeaten records last Friday night by edging Wallace-Rose Hill. Both clubs held a 5-0 record before Santa.

The Lady Panthers forged ahead in the closing minutes to take a 75-71 win, while the Beulaville boys provided more excitement with a last minute 52-48 victory.

The Beulaville lassies knotted the score at 17-17 in the first quarter, but rallied 40-35, at the half. With three minutes to play the Lady Panthers held on to lead 63-62 for the win.

Katie Sue Grady lead the Beulaville attack with 43 points, and Carr

## County Offices Holiday Schedule

Offices in the Duplin County Court House will be closed on Thursday, Friday and Saturday, December 24, 25 and 26 for the Christmas holidays.

The County Farm Agents Office and the Home Demonstration offices will be closed the 24th, 25th and 26th.

A. S. C. Office will close at Noon on December 24 and will remain closed until 8:00 on December 25.

The Duplin County Draft Board will be closed December 23, 24 and 25.

## Two Break-Ins Sunday Night in Duplin Co.

Two Duplin County businesses were broken into Sunday night according to Sheriff Ralph Miller.

Ashley Brinson's Store, on the Kenansville - Chitiquapin highway, near Dobson's Chapel Church, was entered. A few small items were taken.

George Ammons' grill, in Kenansville, was also entered and some money and a few items taken. Investigation was continuing at press time.

## While Weather Conditions Favorable, Farmers Advised to Treat Plant Beds

While weather conditions are favorable for treating tobacco plant beds for nematodes and weeds, farmers are advised to get the work completed.

The reason farmers are urged to complete the gassing of their tobacco plant beds now is that when seeding begins in January, weather conditions are often unfavorable for treating of the soil.

When possible, farmers should have their plant beds located next to a wooded area with a southern exposure and woods to the north and west. This situation permits plants to grow faster because some of the cold winter winds and weather is knocked off the plant beds when the plants are very young.

## Investigation Continues Into Tadlock Death

Investigation is continuing into the death of Joe Barry Tadlock, of Clinton, who was found buried to death in his car, near Falston, last week.

Duplin Sheriff Ralph Miller said FBI Agents Frank Satterfield and E. B. Peach are assisting with the investigation in addition to law enforcement officials in surrounding counties.

"We have no new information release on the case," Sheriff Miller said.

## KPCA Annual Meet! Directors Elected

The Annual Meeting of the Kenansville Production-Credit Association held Friday Dec. 18, at the Kenansville school was termed very successful by Garland P. King, business manager of the Association.

A total of 491 persons attended the annual meeting.

The principal speaker of the afternoon was the Rev. Ernest K. Emurian, pastor of Elm Avenue Methodist Church, Portsmouth, Va. Mr. Emurian, who made a most interesting speech, is widely known as a after dinner speaker. He is in demand for conference and conventions in many states.

Mr. Eugene R. Carlton, President of the Association, presided at the meeting.

Highlights of the business session of the meeting was the election of two directors and the financial report.

Eugene Carlton of Warsaw and Arthur Kennedy of Beulaville were re-elected as directors of the Association for new terms. Mr. King gave the Financial report and discussed the outlook of the Association for 1960.

20 turkeys were given to members holding lucky tickets? Entertainment for the afternoon was provided by the Faulk Sisters.

## Now Is Time To Consider What To Do Concerning Cotton Allotment

Farmers throughout the area are being urged to begin considering what they will do with the cotton acreage allotment for their farms in 1960.

There are several possibilities and all are important. Under the cotton release program, if a farmer does not wish to plant his cotton acreage in 1960, then, he can release it to the County ASC committee for re-assignment to farmers within the particular county who desire to plant the released cotton acreage.

However, the law states that in order for a farmer to retain his cotton history (the cotton allotted to his farm) at least 75 per cent of the cotton acreage must be planted on the farm to which it is allotted at least one year in three.

In other words, if a farmer did not plant his cotton in 1958 and then released it to the County ASC committee for re-assignment in 1959; then, the cotton must be planted on the farm to which the allotment is assigned.

Since 1959 was the first year farmers were allowed to release their cotton acreage, it can be released again this year provided the farmer releasing the cotton acreage planted it on his farm in 1958.

Under law, if a farmer failed to plant his cotton acreage at one year in three, he loses the cotton acreage. This not only hurts the farmer to whose farm the allotment is assigned, but it also affects adversely the County's cotton history and the State's history for cotton. In other words, the County and State suffers more than the farmer who does not want the cotton.

Cotton ginned Eastern North Carolina farmers in 1959 much needed income and it is felt that with the emphasis being placed on yield in North Carolina the farmers' income in North Carolina could be increased considerably.

## Our Christmas

Carols in the evening air, a candle to glow, a wreath on the door, mistletoe hung, high, sometimes 'come in the night', gifts spilling from beneath a lit tree, friends around the holiday table, families reunited in love, church bells in the morning - this is Christmas in America.

This is the Christmas that we know rich in custom and tradition. We are unsure of the exact date of the Christ-Child's birth; nor do we know when the Holy Birthday was first celebrated as the festival of Christmas. But even though the origin of our customs and traditions surrounding Christmas are lost in time, the festivities that mark this day a part of the universal history of mankind. Indeed, the truths of Christmas lie close at the heart of the Christian religion.

Christmas is our festival of the birth of Jesus Christ and comes on December the 25th. Throughout early Christian history, however, the date varied from the middle of November until the middle of January. By the third century the Church had fixed the day as the 25th and the date was soon generally accepted although some peoples, such as the Armenians, observed Old Christmas (January 6) until recently.

After the Christianizing of the nations, customs and superstitions

## Car Stolen In Warsaw Found

A 1956 Chevrolet stolen from Evans' Service Station in Warsaw Saturday night has been found in Pine Tops, N. C.

The car was owned by J. W. Pittman who is employed by the Duplin County Farmers Home Administration in Kenansville and lives in Warsaw. Mr. Pittman received a call from the Police chief of Pine Tops Tuesday morning saying he had found a letter addressed to Pittman in a strange car parked on main St. in Pine Tops and wanted to know if Pittman knew anything about it. Pittman did, he left immediately to recover the stolen car.

## Christmas Eve Is Crucial Period In Holiday Accident Picture, Ellis Says

By H. M. Ellis

Christmas Eve is the crucial period in the holiday accident picture. Experience has shown that about twice as many people are killed on Christmas Eve as on Christmas Day.

The period from 6 p. m. to midnight Christmas Eve is the most dangerous time of the holiday. These six hours claim an average of 12 deaths an hour compared to an average of less than five deaths an hour during the next 24 hour period.

Studies have shown that on a year round basis, about 30 per cent of all fatal accidents involve drinking drivers. At Christmas, the percentage almost doubles - about 55 per cent of the holiday accidents involve drinking drivers.

Following are some facts from the National Safety Council that should have meaning for you:

1. Drinking any alcohol reduces the ability of any driver.
2. Small amounts of alcohol reduce judgement, self-control, and driving ability.
3. The social drinkers are a greater menace than commonly believed as their critical judgment is impaired by a fairly low alcohol concentration and they outnumber the obviously intoxicated.
4. Alcohol is not a stimulant and is classified medically as depressant.
5. Loss of judgment and the capacity for self-criticism occurs before obvious symptoms of intoxication.
6. It takes at least three hours to oxidize (eliminate) one ounce of pure alcohol (about 2 cocktails).
7. Two cocktails (about 0.04% of alcohol in the blood) may reduce visual acuity as much as wearing dark glasses at night.
8. "Under the Influence" means that due to drinking alcohol a person has lost (to any degree) some of the clearness of mind and self-control that he would otherwise possess.
9. You do not have to be obviously intoxicated to be "Under the Influence" and an unsafe driver.
10. Coffee or other stimulants will not offset the effects of alcohol. Only time can eliminate alcohol from the blood stream.

In Charge, Extension Agricultural Engineering N. C. State College.

## Two Accidents No Injuries

Two Auto accidents investigated by Patrolman E. C. Wray in Duplin County over the week end resulted in no injuries but approximately one thousand dollars worth of property damage.

The first accident occurred Dec. 18, on County paved road No. 1500 approximately 1 mile west of Scott's Store in the northern part of the County. Involved in the accident were Robert G. Waters, of Mt. Olive driving a 1954 Ford and Flora Dall Lester of Rt. 1, Kenansville driving a 1955 Ford.

Both cars were traveling west on the county road. The Lester car was attempting to pass the Waters car and according to Mrs. Lester she attempted to pass, the Waters car came across the center line striking her vehicle, causing her car to skid and turn over. Six occupants were in the overturned car but no injuries were reported.

Waters was charged with driving on the wrong side of the road and Mrs. Lester was charged with failing to sound horn in passing. Approximately \$800 damage was done to the Lester car and \$100 damage to the Waters car.

The second accident occurred Dec. 19, 3 miles north of Pink Hill on the Gun Barrel road. Involved were Lurline M. DeBelle of Beulaville driving a 1958 Mercury and Henry C. Baker Driving a 1949 International at truck.

Baker was traveling north and was attempting to make a left turn onto another road when the DeBelle car approaching from the rear attempted to pass as Baker made his turn. The accident resulted in slight damage to the truck and approximately \$100 damage to the car.

Baker was charged with No operators license and no signal lights.

## Mrs. Drew Named Duplin County Director NEW March Of Dimes Of 1960

Mrs. O. D. Drew of Magnolia, North Carolina has been appointed Duplin County Director for the NEW March of Dimes for 1960, it was announced today by William A. Creech State March of Dimes Chairman.

The drive, which will be held in January, will help support the new and expanded program of The National Foundation, which is now attacking the crippling diseases of birth defects and arthritis just as it attacked the problem of polio.

Mrs. Drew, better known to her friends as "Pinky", assists her husband in running Drew's Service Station in Magnolia. They have four children, ages 15, 10, 6 and 1. The six year old, Mandy, is paralyzed in both legs as a result of a bout with paralytic polio. He wears long leg braces, but is otherwise a healthy, energetic young man.

Mrs. Drew was formerly Deputy Clerk of Court in Kenansville. She is a member of the Magnolia Baptist Church, Magnolia Civic Women's Club and was 1959 Chairman for the Magnolia March of Dimes. She is a native of Magnolia.

"The people of Duplin County who helped make the Salk vaccine possible by previous March of Dimes contributions," she said, "have an even greater stake in this New March of Dimes, because one out of four families is affected by these three diseases the nation's biggest cripples."

"The National Foundation," she continued, "is embarked on the largest and most ambitious program ever undertaken by a voluntary health agency, and needs your support more than ever. March of Dimes funds will be used to finance extensive medical scientific research, train young people in the health and medical professions, and provide better treatment for many crippled children who qualify under the new program."

Mrs. Drew emphasized that polio is still a national problem. She referred to the epidemics in Des Moines, Kansas City, and the high incidence in North Carolina this year as well as the eight cases and one fatality in Duplin County - and said that the polio toll this year would be among the highest since the Salk vaccine was developed. The National Foundation, she added, would continue to bear the costly burden of caring for polio victims - a burden that might have been eliminated had everyone sought the protection of the Salk vaccine.

"The New March of Dimes for 1960 is a formidable weapon guarding America's health," Mrs. Drew said, "and I am confident that the people of Duplin County will give it their much needed and richly deserved support."

RALEIGH - The Motor Vehicles Department's Summary Of Traffic Deaths Through 10 A. M. Monday, December 21:

Killed To Date ..... 1152  
Killed To Date Last Year ..... 1040

## SLOW DOWN AND LIVE-THIS WINTER

### DRIVING FACTS YOU SHOULD KNOW

STARTING ABILITY ON ICE		STOPPING ABILITY ON ICE	
Average braking distances, based on tests from 20 MPH on glare ice. For comparison, average braking distance of regular tires on dry pavement at same speed is 31 feet, on glare ice 195 feet.			
REINFORCED TIRE CHAINS 509'	SNOW TIRES 128'	REINFORCED TIRE CHAINS 77'	SNOW TIRES 174'
REGULAR TIRES 100'	REGULAR TIRES 100'	REGULAR TIRES 195'	REGULAR TIRES 195'

STARTING ABILITY ON SNOW		STOPPING ABILITY ON SNOW	
This shows the comparative stopping ability of regular and snow tires and reinforced tire chains on loosely packed snow, from 20 MPH.			
REINFORCED TIRE CHAINS 413'	SNOW TIRES 191'	REINFORCED TIRE CHAINS 38'	SNOW TIRES 52'
REGULAR TIRES 100'	REGULAR TIRES 100'	REGULAR TIRES 60'	REGULAR TIRES 60'

STOPPING ABILITY ON DRY PAVEMENT	
REGULAR TIRES 21'	REGULAR TIRES 21'

**SAFETY sayings-**

**STAY ALERT! STAY ALIVE! MAKE IT COFFEE WHEN YOU DRIVE**