

ARBOR DAY

FIRST OBSERVED IN NEBRASKA ON APRIL 10, 1872
WHEN MORE THAN A MILLION TREES WERE PLANTED.



TREES—ONE OF OUR GREATEST NATIONAL RESOURCES—ONE OF THE MOST IMPORTANT MEANS OF SOIL CONSERVATION AND FLOOD CONTROL. WHEN A TREE IS PLANTED, NOT ONLY IS THE BEAUTY OF A COUNTRYSIDE ENHANCED BUT A GROWING ASSET HAS BEEN ADDED TO THE WEALTH OF OUR DEMOCRACY.

VILLAGE ORANGE

By Betsy Brunk

In order to realize fuller news coverage in Chapel Hill, Hillsboro and the whole of Orange county, with this issue of THE NEWS we will begin to do a little specializing. By this column, I will cover the Village as completely as I know how, while Harry Large by means of "By the Editor," will take care of the rest of the county. This is not necessarily a process of separating the sheep from the goats, or the goats from the sheep as the case may be, but merely an attempt to put your miscellaneous news where it will be easiest for you to find it. We hope you will like this idea and, as usual, hope you will let us know if you don't.

Hillsboro Radio Shop



NOW LOCATED AT MY HOME ACROSS STREET FROM HIGH SCHOOL. COMPLETE STOCK OF HARD TO GET TUBES AND PARTS. —24 HOUR SERVICE— SPECIAL! —IN STOCK NOW— UNITS TO CHANGE YOUR RADIO FROM BATTERY TO ELECTRICITY —PICK UP AND DELIVERY—

FIRST ROSE? During my wanderings over the Hill this week, I encountered my first rose of the season and in the most unusual spot—in front of the Strowd Motor Company building. In among the large healthy bushes growing before this establishment on Franklin street was nestled one of the loveliest roses I've ever seen in bloom. It was of the cream-colored variety with just a hint of blush. Truly, I never expected to find any sort of flower growing around such a business-like spot, but then "A Tree Grew in Brooklyn" here, didn't it? That's Chapel Hill for you!

DIGGING OUT... Odis Pendergraft, who is rarely found idle around his University Service Station, was busy on a new project this week—digging up and taking out the three bushes in the little plot of ground directly in front of his service station. Seems as how after a night of one of E. Carrington Smith's shows at the Carolina Theatre, the little plot looked like a city dump heap. Mr. Pendergraft worked hard to keep this spot clean, but those bushes weren't much help. Now for a change he's going to let some grass grow under his feet and see if that doesn't help. I suppose the best thing of all would be for us Chapel Hillians, and friends, to keep our trash to ourselves, or else to put it where it's meant to be—in the disposal units provided for us by the town. We complained to the Board of Aldermen some time ago about not having enough of these units. Could it be we're not completely using those we have?

ACCIDENTS... Yes, accidents

will happen. Ask Judge F. O. Bowman; he knows. A driver from Durham (glad we don't have to claim this one too) ran into the back of Judge Bowman's car Monday afternoon while he was waiting for the spotlight to change at the intersection in front of President Graham's home. Luckily the other car took most of the licking, and the Judge said the driver was quite agreeable about the whole thing.

According to a recent radio survey, automobile accidents are occurring in the United States at the rate of one a minute. That's some record, and Chapel Hill has certainly had her share of them lately. However, accidents like the one mentioned above may not cost life or limb but they don't add to the life of a car, and Poe-Mangum still has only the one DeSoto club coupe on display for sale.

POE-MANGUM AGAIN... While we're on the subject of this worthy service station, you might be interested to know that Mr. Mangum's new showroom has been completed and is now in use. The six workshops on his building agenda are not yet finished, but should be in another month or so.

CLEAN WINDOWS... Been wondering for sometime how Dell's Jewel Box managed to keep such clean display windows. Well, the other day I learned the secret. Those windows are washed just about every morning in the week. Appears as how the Merchants Association ought to make the proprietors "life members" or something for such inspiring and worthy effort.

CAROLINA CLEANERS... With their announcement in THE NEWS this week, the Carolina Cleaners in the new building block officially open their new laundry department, and will henceforth be known as "Carolina Laundry & Dry Cleaners." This business is the product of Bob Smith and Nick Watts, who assure us that they are now ready to handle as much trade as comes their way. The laundry, as well as dry cleaning, department is complete, accepts family bundles and offers one week service.

ATO PROJECT... The ATOs have gotten busy and landscaped the grounds around their house to a fine degree. That new grass should look extremely good in a few weeks. Now the only problem is what are they going to do about the drainage problem at the beginning of their walkway. There's always something!

MRS. ANDREWS, of Andrews' Funeral Home, has seen the completion of her fifth and last apartment, in her house across the street from her funeral home, but doesn't expect the new tenants will be

County Agent's News - Views

SHORTAGE OF FEED MAKES TEMPORARY PASTURES ADVISABLE

Records over the state show that 15 per cent of grain and 30 per cent of protein feed can be saved in feeding hogs by letting them graze on soy beans. It is recommended that soy beans be planted during April in rows 24-30 inches apart and these soy beans be cultivated twice to keep down grass and weeds. Start grazing when they are 12 to 15 inches high. The lack of hog fences need not keep Orange county farmers from grazing soy beans. A two-strand electric fence has proven satisfactory. Soy beans also make a good grazing for growing pullets during late spring and summer. Plant and cultivate the soy beans as for hogs. They make one of the safest green feeds for poultry and are at their best when other green feeds get tough during dry hot weather.

STATEWIDE CORN TEST RESULTS

Results of statewide 1945 tests in corn production have been announced by Dr. Emerson R. Collins, leading extension agronomist at State College. Results to date from 273 experiments in 62 counties showed that close spacing, proper fertilization and the use of adapted varieties of hybrid seed increased normal yields by 20.3 bushels to the acre and increased farmers' average net return by \$23.35 per acre over usual methods of production.

Test corn yielded an average of 66 bushels to the acre. Regular "farmer" yields averaged 45.7 bushels. It had been specified at the outset of the demonstrations that hybrids be planted on "average" land, plots which normally yielded less than 30 bushels of corn. The state average corn yield

able to move in until next month. There's still the matter of plumbing to be installed, but fortunately she has been able to secure the necessary equipment. However, there's no cause for general excitement; the apartment has already been promised.

SUTTON'S STORE... Those paint buckets and other renovation elements which were recently sitting in front of Sutton's drug store were rapidly put into use, and have caused the store to look as though it has had its face lifted. The change was a wise one, and lends just the right air of modern efficiency.

has been around 20 bushels for the past 30 years. North Carolina's more progressive farmers volunteered to make the production tests and made more than twice the average state yield in following customary practices but fell short of the hybrid mark by more than 50 per cent.

Shallow cultivation during early growth of the crop and no cultivation after plants were two and a half feet high was credited by Dr. Collins with greatly increasing yields. The agronomist said that for best results corn should be planted in three and a half-foot rows at intervals of 16 to 21 inches, fertilized with 300 to 500 pounds of 8-8-6 fertilizer and top-dressed with the equivalent of 500 pounds of nitrate of soda. If fertilizer supplies are not up to recommendations, the spacing of plants should be lengthened accordingly.

WARNING AGAINST CROTALARIA GIVEN

A warning against the use of crotalaria as a cover crop on areas to be grazed by livestock comes from Dr. William Moore, head of the veterinary division of the State Department of Agriculture.

He said that it has been found that the plant contains a powerful alkaloid poison, the effects of which do not show up immediately on farm animals. Rather, he explained, it accumulates in the system over weeks and months, finally killing them.

"The insidious thing about this is that the owners, not knowing the effects of the poison plant, may blame other causes for the loss. Crotalaria is a good cover crop when livestock are not involved," said Dr. Moore.

Jefferson Standard Life Ins. Co.

GREENSBORO, N. C.

JOHN W. UMSTEAD
Manager

111 Corcoran Street Bldg.
DURHAM

132 E. Franklin Street
CHAPEL HILL



GET YOUR SUPPLIES IN ONE CALL AT J. L. BROWN & SON HILLSBORO

Lions Club Presents ATHLETIC PARK BASEBALL PARK — Durham

4 Big Days and Nights 4 TODAY-TODAY-TODAY AND FRI-SAT-SUN

SHOWS TWICE DAILY 3:30 & 8 P.M.

See! World Champion Cowboys in the World's Greatest RODEO

CONTESTS—BRONC RIDING—BULLDOGGING—WILD BRAHMA BULL RIDING



COMBINED WITH THE SENSATIONAL HOLLYWOOD THRILL

CIRCUS

CAN YOU RIDE "BIG SID," THE BIG BULL, 10 SECONDS? \$100.00 IF YOU CAN!

SEE! Wild Outlaw Bucking Horses!
SEE! Wild Brahma Bulls!
SEE! The Dive-Bomber Crash in Mid-Air!
SEE! Super Dare Devil Leap-His Car Over Bus!

162 PERFORMERS—62 THRILLING EVENTS
COWBOYS—COWGIRLS—CIRCUS ACTS
HOLLYWOOD DARE DEVIL STUNT MEN

Thurs. Opening Nite All Seats \$1.00

KIDS	ADULTS	Buy Tickets Now at
50c	1.00	Evening
Any Seat	1.50	Drug Store

BENEFIT WORKSHOP FOR THE BLIND



Peeling Season

The Best Time To Cut Pulpwood

Plan now to cut and peel as much pulpwood as possible during the season when the sap is up and trees peel easily. Peeled pulpwood prices are substantially above those paid for rough wood.

There are many other advantages to peeling. The cut and peeled log dries out quickly and loses up to half its weight. The smooth, lighter pulpwood sticks are easier to load and handle; you can haul more pulpwood per trip; save time, labor, gasoline and tires.

Your Woodlot Pays Cash Dividends

Get ready cash from your woodlot for farm repairs, equipment, mortgage payments and new conveniences for your home and family.

IT PAYS TO CUT AND PEEL TOP QUALITY PULPWOOD

VICTORY PULPWOOD COMMITTEE

DON S. MATHESON

C. G. ROSEMOND

J. ROY PARKER



MEBANE THEATRE

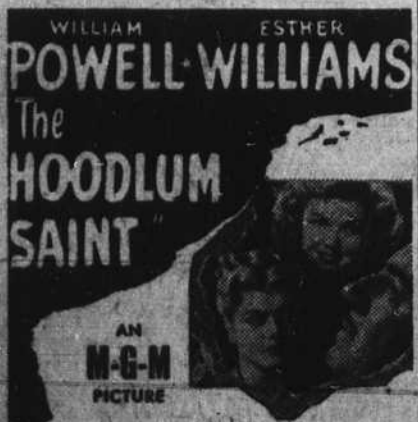
TELEPHONE 2994

SATURDAY, APRIL 13

Gene Antry
in
Man from Music Mountain

SERIAL — CARTOON
COMEDY

MONDAY—TUESDAY



Plus
NEWS — CARTOON

MATINEES Mon. Wed. and
Thurs. — 2:15 P.M. Open Saturday
12:00 noon continuous showing.

SATURDAY—LATE SHOW

10:15 P.M.

Morgan Conway
Anne Jeffreys
in
Dick Tracy

WEDNESDAY

John Wayne
Ella Raines

Tall in the Saddle

THURSDAY—FRIDAY

