

Hillsboro Opens Its Doors This Weekend to Visitors To Flower Show - Pilgrimage

CHARLES SPENCE
HUBBARD

Hillsboro.—This historic county here the seeds of revolution were sown long before the Boston Tea Party or the Declaration of Independence, plans to make new history this month.

Combining beauty with tradition, the Hillsboro Garden Club will present its annual Flower Show and garden pilgrimage. It will be the first such combined effort during the pilgrimages.

The dates are April 23 and 24.

The Flower Show, competing for the National Purple Ribbon award, will be the largest and most complete ever presented by the Garden Club of this community, and the pilgrimage will open to visiting guests beautiful gardens and historic homes and public buildings.

The Flower Show will be open from 10 a. m. to 9 p. m. each day. The pilgrimage homes will be open from 10 to 6 Saturday and 1:30 to 7 Sunday. A \$1.50 charge will cover admission to both events.

Old Inn Is Headquarters

Headquarters for the two-day event will be the Colonial Inn, which itself is a historic site. It was built in the 1780's on the style of an English coffee house. On display here during the festival will be a miniature stage coach carved by Shepherd Strudwick of Hillsboro.

The major part of the Flower Show will be located in the American Legion Community House. Here will be found the Horticultural exhibit displaying the specimens for which Hillsboro gardeners have been long noted. The Curb Market, Junior Arrangements and the Niche Arrangements—featuring early American period styles—will share space with numerous special displays. A photographic exhibit of early American architecture will emphasize the work of the local John Berry. Miss Eva Gatling of the Duke University Art Department is lending this collection. School exhibits will include a display of prize-winning bird houses and shows of plant varieties, planting and plant care, Indian study and studies of the Regulators. The Schley Grange, national community service award of last year, will have its own exhibit in this building.

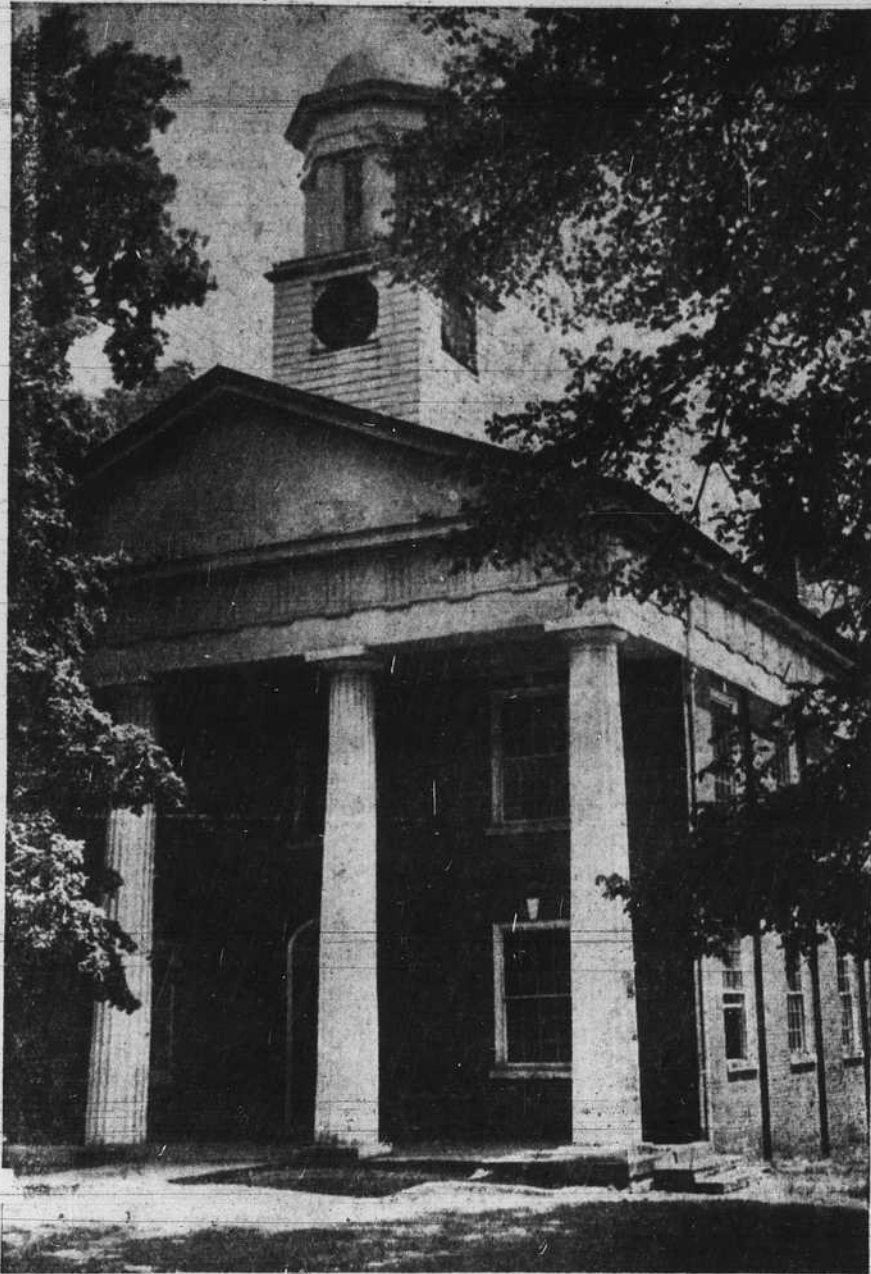
Old Churches Open

Hillsboro's four churches, all built prior to the Civil War, will be open for inspection during the week-end. The Presbyterian Church was built in 1818, replacing an older structure which burned. In the churchyard rest some of North Carolina's early great, including William Hooper, signer of the Declaration of Inde-

THE NEWS of Orange County

Your Home Newspaper Serving Orange County and Its Citizens Since 1893

HILLSBORO AND CHAPEL HILL, THURSDAY, APRIL 21, 1949



Orange County's historic courthouse is one of the landmarks visitors find most interesting. In it are stored some of the richest treasures of Hillsboro's and the nation's history.

pendence, James Hogg and the great educator, Archibald Murphy.

St. Matthews Episcopal Church was built in 1825 on land donated by Thomas Ruffin, who gave the site because there Ann Kirkland accepted his proposal of marriage.

The Methodist Church dates from 1857 and was designed by John Berry. The Baptist Church was built in 1858 and recalls that in 1862 its new bell was donated to the Orange Light Infantry to be molded into cannon for the C.S.A. The churches will exhibit their entries in the Flower Show.

Tree lovers may visit Cameron Park, where virgin hardwood is mingled with evergreens planted a century ago. An old Indian trading path is still discernible in the valley. Hillsboro's most beautiful park is also its most historic ground. Here six captured Regulator leaders were hanged in the presence of Colonial Governor Tryon, and here they were buried in unmarked graves in June of 1771. A stone slab marks the spot where these almost forgotten men died for the cause of freedom. Since two of these men were unknown, Hillsboro regards them as two of the first (if not the first) unknown soldiers to fall in organized rebellion against the Crown's colonial government.

Relics of Colonial Days
The Orange County Courthouse, also to be open, is recognized as

one of the finest architectural examples in the South. Its tower clock was a gift from King George III. Within the courthouse are stored the county records from 1766; and here may be seen the official weights and measures, leg irons and branding irons that were used in colonial days. The Courthouse Square was the staging point for Daniel Boone's expe-

dition to Kentucky in 1776.

Those who wish may visit the Masonic Hall which was built in 1823. The Hall is the home of Eagle Lodge, No. 19, chartered in 1791.

Two representative gardens will be open to visitors. They are the charming Spring garden of Mr. and Mrs. Paul Collins and the Rock Garden of Mr. and Mrs. Clarence D. Jones, crowning a bluff high over Eno River.

Many Old Homes Open

Hillsboro's historic homes are numerous and well-kept, for they are still the homes of its citizens today. Open to the Flower Show-Pilgrimage guest will be the Thomas Ruffin home, now the residence of Mr. and Mrs. Jack Snipes; the James Webb home, in its beautiful dogwood setting overlooking the Occaneechee mountain chain; the Military Barracks where Confederate troops were trained, and now the home of Mr. and Mrs. Paul Caston; the Nash home, built prior to 1800, and the present residence of Dr. and Mrs. H. W. Moore; the kitchen of Mr. and Mrs. Don Matheson, with its huge fireplaces and built-in ovens; and Ayr Mount, started in 1794. This majestic, four-floored manor house was built of imported brick, and has been the continual home of the Kirkland family throughout its history. S. S. Kirkland, the last remaining descendant, makes it his home today. These homes are furnished with some original and many typical period pieces; and the visitor will find here too the Flower Show arrangements, placed in their proper historic setting.

Moorefields To Be Open

Moorefields will be included in the Hillsboro pilgrimage April 23 and 24 for those who like to admire interiors of old homes. It was built in 1785 by Judge Alfred Moore, whose home was in Wilmington, but who preferred to live in "Hillsborough" during the summer.

The 8-room house was built on a 1,000-acre plantation, but years of different ownership has cut this acreage considerably. Mr. and Mrs. June Ray are present owners and occupants of Moorefields.

Inside may be seen a Chinese Chippendale stairway, corner fireplace, and a handsome fluted mantel. Nothing has been added to the house since it was constructed. The timbers are hand hewn and put together with wooden pegs.

The following is taken from the book "Some Memories of My Life" by Alfred Moore Waddell (great grandson of Judge Moore) which was published in 1908: "This summer residence was in Orange County about three miles from the Historic town of Hillsboro where I was born (Sept. 16, 1834)

(Continued on Page 3)

MAYOR'S WELCOME

Hillsboro's place in history and the affections of its townspeople is secure. We hope that you as visitors to Hillsboro during the combined Flower Show and Pilgrimage, April 23-24, also will find something of interest and inspiration here during your visit.

The Hillsboro Garden Club, one of our most active civic organizations, has worked hard in combining for the first time in history their Spring Flower Show with the annual Pilgrimage for your enjoyment. We believe you will appreciate their efforts and laud their accomplishments, as do those of us in the municipal government, who bid you welcome.

BEN G. JOHNSTON
Mayor of Hillsboro



Young Hillsboro girls, with Betsy Forrest as chairman, plan to serve as junior hostesses for the town's flower show-pilgrimage April 23-24. Here they pose before the home of Dr. D. E. Forrest in the costumes they will wear.