

The News of Orange County

HILLSBORO AND CHAPEL HILL, N. C., THURSDAY, AUGUST 29, 1957

For Quick, proven results sell, buy, rent or get a job by using the classified ads in Page 7 of The NEWS of Orange County.

EIGHT PAGES THIS ISSUE

Auto Tags To Be Sold In County

State auto license tags will go on sale in Chapel Hill sometime next month at a newly-authorized Carolina Motor Club outlet there.

Charlie Stancell, owner of Stancell Motor Co., an American Automobile Association service garage, said that his appointment as Carolina Motor Club representative for Orange would enable local citizens to buy their next year's auto license plates in Chapel Hill instead of having to go to Durham or complete the transaction by mail.

Hope For Town Sales

He said also that he hoped it would be possible for him to sell Chapel Hill town license plates through Motor Club franchise, but added that no arrangements for this had been approved yet.

This week Mrs. Margaret Hutchins, the firm's secretary, is in Raleigh attending a Department of Motor Vehicles four-day training school on transfers of auto license titles and other facets of license plate and title transactions.

Mr. Stancell said that necessary license transactions in the purchase or trading of autos could be carried out through the local Motor Club office, and that periods for inspection of out-of-state cars for North Carolina licenses would also be set up with the State Highway patrol.

New Liability Law

He emphasized the importance of the local service this year in pointing out the newly-enacted law which will require auto owners to show proof of liability insurance when they buy 1957 license plates. These will go on sale Jan. 1 and must be displayed by Feb. 15.

In the future, he said, it was hoped that the local Motor Club office would be able to offer other regular AAA member services including membership sales, travel routing, and reservations for accommodations.

STEW SUPPER

A Brunswick stew and chicken stew supper will be held Saturday evening from 5 to 8 o'clock at the New Sharon Church. Cake, pies and ice cream will also be served.

Renovations At Several Schools To Greet Students At Opening

Students will be greeted by a number of renovations and changes upon their arrival for the new school year in Orange County Schools next Wednesday, but the repairs may not be as extensive as in some prior years.

Renovations on the Hillsboro High School basement, which is being converted into a modern science department which, according to Science Supervisor Henry Shannon of the State Department of Public Instruction will be equal to those provided at Walter Williams High in Burlington or Durham High, are being hurried toward completion. This work is expected to be completed about two weeks after school begins. In the meantime, science classes will be held in improvised quarters. The new gymnasium at Hillsboro is progressing satisfactorily and

County Schools Will Open Wednesday For New Year

4,800 Expected At 12 County Institutions; Faculty of 151 Ready

Summer vacation will end for approximately 4,800 Orange County children and 151 principals and teachers next Wednesday morning when the doors of the 12 public schools of the county system open for the 1956-57 session.

County Superintendent G. Paul Carr joined other school officials in urging good attendance at all units for the opening sessions.

The 4,800 opening day estimate by the county superintendent is 100 more than last year's pre-opening statement, indicating only a small increase in enrollment is expected.

Some 535 boys and girls, it is anticipated, will comprise the groups entering First Grades in the nine White and three Negro school for the first time. Eligibility requirements are that a child to enter school must be six years of age or older before October 16, 1957. Children entering school for the first time are advised to bring their birth certificates with them.

Principals of the schools met yesterday with Superintendent Carr and completed plans for the opening next week.

Five Principal Changes

Five changes among the Principals' ranks are effective this year. Ted B. Shoaf moves from Efland to Cameron Park to succeed Fred Rogers. John S. Black succeeds Shoaf at Efland, while Stanley Gene Duke becomes principal at Aycock, succeeding Jesse L. McDaniel, who resigned. Mrs. Pearl S. Keller is the new principal at Murphy School and J. W. Joyner takes over at Efland-Cheeks Negro School.

In addition to principals mentioned above, the following Principals will be returning to their posts: G. A. Brown, Hillsboro; Mrs. Gladys Harris, West Hillsboro; Mrs. Lois Blalock, Caldwell; Reid Suggs, Carrboro; Mrs. Blanche Mattox, White Cross; A. L. Stambaek, Central; and Harold H. Webb, Cedar Grove.

No county-wide teachers' meeting is scheduled this year prior to school opening. All teachers will (See OPENING, Page 8)

Monday Is Holiday

Next Monday, Labor Day will be observed as a holiday generally throughout Orange County.

Stores will be closed in Hillsboro, Chapel Hill and Carrboro government offices will take a holiday, and textile plants will be observing the long weekend.

The County Boards of Commissioners and Education, usually scheduled for their first Monday meetings, have postponed their sessions until the following day, at 10 a.m.

Few activities are scheduled as

most citizens will either use the day for rest or to return from a long weekend trip.

One scheduled event not to be postponed is the annual sale of property for delinquent 1956 taxes to be held at the courthouse door at noon Monday. Death and taxes rarely take a holiday is the old adage known to all and this Labor Day, 1957, will be no exception at least insofar as the latter is concerned.

Drive carefully to forego the former.

Frank Ray Assumes Top Exchange Post

J. Frank Ray of Hillsboro became president of the North Carolina State Exchange Clubs at the 23rd annual state convention of the organization held in Durham last weekend.

Ray, a charter member and past president of the Hillsboro Exchange Club, was elected from the vice presidency, succeeding Dr. A. E. Sherron of High Point.

Ray is the first Hillsboro club member to head the State organization of Exchange Clubs, having previously served terms on the State Board of Control, as State Treasurer and as vice president.

Holland Elected

Herbert Holland of Chapel Hill was elected a member of the State Board of Control for a two-year term, an office usually considered a stepping stone up the ladder to the State presidency.

The newly elected State officers were installed at the annual banquet at the Washington Duke Hotel Saturday night, featuring an address by J. Benjamine Brick of Atlantic City, N. J., past national Exchange president. A number of Hillsboro club members and their wives were in attendance.

Ray has been active in most of the projects of the Hillsboro Exchange Club since its inception here and likewise active in the American Legion and the 40 & 8. He is the son of Mr. and Mrs. Ira Ray of Hillsboro.



J. FRANK RAY, top Exchange Club member.

Sign-Up Dates For Wheat In Soil Bank Set

Beginning September 3, eligible farmers who wish to participate in the 1958 winter wheat Acreage Reserve Program may sign agreements at the County ASC Office, Donald V. Roberts, Manager of County Agricultural Stabilization and Conservation Committee, announced today. The sign-up period for the winter wheat program extends to October 4 of this year.

Rates of payment for individual farms will vary up and down from a county average rate per acre according to the relative productivity of the farms and other factors.

Farmers who are eligible to sign 1958 Acreage Reserve Agreements for winter wheat are those who have "old farm" wheat acreage allotments for 1958 and who normally grow winter wheat.

Mr. Roberts explained that, under the 1958 program each producer will be responsible for furnishing the County ASC Committee with the production history and other information needed to establish a "Soil Bank Base" for his farm, and this must be done before the agreement may be signed. The required information should be supplied at least 15 days before the end of the sign-up period on October 4.

(See SIGN-UP, Page 8)

Inventory Of Water Ills At 8

Plans for the Orange County water problems inventory meeting to be held at the courthouse tonight 8 o'clock have been completed, according to Don S. Matheson, chairman of the inventory committee.

Mr. Matheson said his committee was restating its invitation to every citizen of the county with a water problem to come to the meeting and report the exact nature of the problem.

This whole project is aimed at finding out what the problems are so that something can be done about them. The people who have water problems are the ones that stand to benefit from this inventory.

Problems

Every problem that is reported will have its effect on future water conservation planning in North Carolina. The State Board of Water Commissioners will study each problem individually in its effort to develop an effective state-wide program aimed at eliminating as many problems as possible. But we can't expect the Board to solve the problems unless we tell them what the problems are.

Mr. Matheson emphasized the fact that the meeting on Thursday night is not to be interpreted as a discussion meeting. He explained that the sole purpose of the meeting is to record existing and anticipated water problems. A discussion meeting will be scheduled at a later date, after the State agency has studied the problems (See WATER, Page 8)

McDade New Commissioner; Succeeds Pope



DONALD MCDADE, new commissioner.

Lynch Makes Appointment To Vacancy

Donald McDade, well-known farmer and civic leader of the Cedar Grove community, Tuesday was appointed a member of the Board of County Commissioners to fill out the unexpired term of the late Claude T. Pope, also of Cedar Grove.

McDade's appointment was made by Clerk of Superior Court E. M. Lynch in whose office is vested the power to fill such vacancies, pending the next general election. His term expires in December of next year. A Democrat, McDade must face the electorate in next Spring's Democratic Primary should he desire to continue in office after the expiration of the current term.

Appointee Praised

Mr. Lynch in announcing the appointment said: "Donald McDade is a young man of extremely fine character, very conscientious, and highly recommended by everybody. I am delighted to appoint him."

McDade is the son of the late Mr. and Mrs. Carl C. McDade and a native of the Cedar Grove community. (See MCDADE, Page 5)

Two Break-Ins Last Weekend

Two widely separated Orange County firms, Carr's Super Market at Hillsboro and Compton's Store at Carr, were broken into during the past weekend.

No arrests have yet been made. At Carr's store, the marauders broke the glass on the office door and attempted to pry open the safe but were unable to gain entrance (See BREAK-INS, Page 8)

Ensign Honored At New Hope

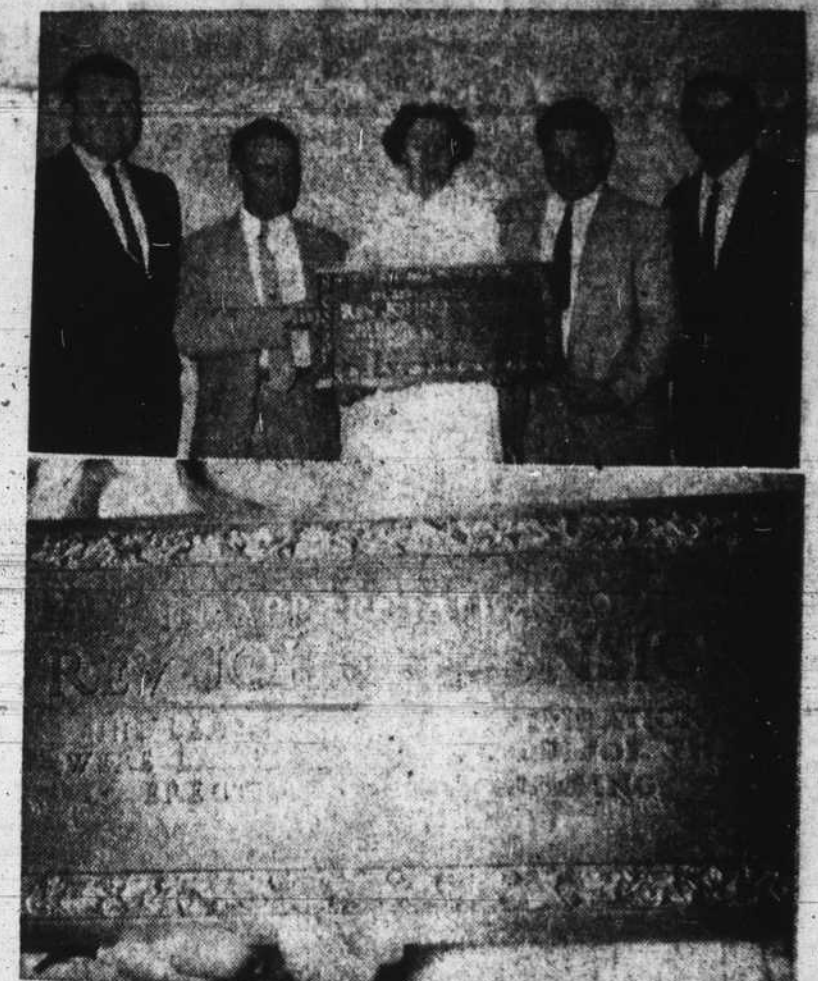
Presentation of a handsome plaque to be installed in the church as a tribute to the Rev. John E. Ensign was one of the features of Homecoming Day at New Hope Presbyterian Church last Sunday.

The Rev. Mr. Ensign, now Director of Camps and Conferences of East Hanover Presbytery, Richmond, Va., was pastor of New Hope from 1948 to 1956, during which period he directed and supervised the development of Camp New Hope and climaxed his local ministry by leading the congregation in the construction of a new \$80,000 church plant to replace the old church building. Mr. Ensign preached during the morning worship service on Homecoming Day.

Presentation

The plaque was presented by the Young Adult and Adult Classes, represented by Virginia Nunn and Ernest Mauer, class presidents, to the current pastor, the Rev. William O. Smith, who presented it to Ensign. Appropriate dedicatory remarks were made by the Rev. Allen McSween of Greensboro.

The plaque, which will be installed in the foyer of the church, was inscribed as follows: "In Appreciation of Rev. John E. Ensign. His leadership and inspiration were largely responsible for the erection of this building, 1956."



PLAQUE OF APPRECIATION—Principals in the surprise presentation ceremonies at New Hope Presbyterian Church Sunday are shown above following presentation of a plaque to be hung in the church vestibule signifying the congregation's appreciation to the Rev. John Ensign for his leadership and inspiration which enabled the construction of the new church plant in 1956. Left to right, the Rev. William Smith, present pastor, Ernest Mauer, Virginia Nunn, Mr. Ensign, and the Rev. Allen McSween. Below, a close-up of the plaque.

Dove Hunting Laws Are Given

County Game Protector Bob Logan wishes to call the attention of sportsmen to the approaching split season for dove hunting.

There is a good outlook for birds in Orange this season, he said, while noting that they haven't yet started bunching up. The first season will be from Sept. 7 through Oct. 5, and the second, from Dec. 11 until Jan. 10.

Law provides that doves may be taken during open season from sunset until sunset. The daily bag limit is 10 per person and the possession limit, 10. Guns must be plugged to hold no more than three shells.

SBORO'S COSTLIEST TRAIN WRECK

SBORO'S COSTLIEST TRAIN WRECK was largely a memory of a week after 22 freight cars were derailed some 300 feet from the station at West Hillsboro, with the results as shown in the picture story above.

The demolition crew from Sid Rancer's Iron & Steel Co. in Durham is scrapping seven of the most heavily damaged cars, while the remaining 15 were removed to Southern shops for salvage.

The entire area was expected to be cleared of wreckage and debris by tomorrow. The wreck occurred about 10:30 last Wednesday night and was one of the most spectacular the area has ever witnessed. Fortunately there were no injuries. Five regularly scheduled trains were delayed before the 300 feet of damaged track could be cleared, repaired and reopened 19 hours after the smash-up occurred.

The 22 derailed cars were loaded two with wallboard, three with fertilizer and 17 with leaf tobacco. No attempt was made to salvage the wallboard, but it was said that most of the tobacco would be salvageable.

The wreck was apparently caused by a faulty journal or "hot box." The axle runs through a journal on both sides where plates of brass hold it tight on the top and bottom. The journal or box is packed with waste and grease. A rough place in either the brass plates or the axle can cause friction capable of burning out the packing, resulting in a "frozen" axle which then breaks. Another possibility is improper servicing at stops along the line.



SBORO'S COSTLIEST TRAIN WRECK was largely a memory of a week after 22 freight cars were derailed some 300 feet from the station at West Hillsboro, with the results as shown in the picture story above.

The demolition crew from Sid Rancer's Iron & Steel Co. in Durham is scrapping seven of the most heavily damaged cars, while the remaining 15 were removed to Southern shops for salvage.

The entire area was expected to be cleared of wreckage and debris by tomorrow. The wreck occurred about 10:30 last Wednesday night and was one of the most spectacular the area has ever witnessed. Fortunately there were no injuries. Five regularly scheduled trains were delayed before the 300 feet of damaged track could be cleared, repaired and reopened 19 hours after the smash-up occurred.

The 22 derailed cars were loaded two with wallboard, three with fertilizer and 17 with leaf tobacco. No attempt was made to salvage the wallboard, but it was said that most of the tobacco would be salvageable.

The wreck was apparently caused by a faulty journal or "hot box." The axle runs through a journal on both sides where plates of brass hold it tight on the top and bottom. The journal or box is packed with waste and grease. A rough place in either the brass plates or the axle can cause friction capable of burning out the packing, resulting in a "frozen" axle which then breaks. Another possibility is improper servicing at stops along the line.

Edward Parrish of West Hillsboro, who was walking to work at the Eno Mill a few hundred yards from the smash, said he saw a blaze four or five feet high coming from one of the journals.

"Then the blaze died down and this one car began swaying and rocking in a fish-tail motion. Then it sort of bowed up and the first thing I knew cars were shooting out from both sides, some leaving the track and coming to rest 20 or 30 feet from the track and others sprawling across the track. That's when I got out of there," Parrish said.