

Views aired at women voters' meeting . . .

Borrow or pay-as-go issue seen in stands of county candidates

Further borrowing as opposed to a pay-as-you-go policy for school building financing developed as an issue at Tuesday night's League of Women Voters candidates meeting in Chapel Hill.

About 250 persons attended the meeting to hear and question the four Democratic aspirants for county commissioner and Republican candidate Louis Sparrow.

Most of the discussion centered on school financing, as the candidates acknowledge the need for long-range planning. Incumbent Commissioner Donald Stanford and candidate Hugh Wilson boosted pay-as-you-go construction. Harvey Bennett and Philip Schinhan, while they did not speak against this policy, both stated they felt bond issues would be necessary for this purpose.

Here are portions of the candidates' four-minute prepared statements as well as their answers to audience questions.

Harvey Bennett views bonding as necessary

Mr. Bennett, as a first-time office-seeker, commended the past record of the commissioners and cited "support of our public schools" as the county's most important service. " . . . It is going to require maximum effort for us to keep up with the need for classrooms and pay the salaries we should and must to teachers," he said.

"I feel capital improvements for our schools will have to be financed largely through borrowed money — from bond issues approved by vote of the people."

He felt that ABC store profits should go to the public schools, pledged "serious consideration" to any move for a higher Chapel Hill school tax, and cited the University as a possible new revenue source for the County.

"The parents of a large number of our school children are students here in the University — and we're glad to have them. I hope the state will soon decide it should supplement our public school funds because of this."

The Chapel Hill businessman said he would support school needs "but be very careful about increasing taxes." Asked if he'd favor setting up a single school system for both races he said, "I can't see where we'd gain anything by that."

Schinhan sees need for 'planning ahead'

Candidate Philip C. Schinhan pledged his support to a school budget for Chapel Hill and the County system "that will provide the facilities . . . specified by the school boards so long as the specifications are reasonably documented as to need. It is my hope that all such specifications can be made a part of a long-range plan . . . We can no longer afford the temporary expedients. We must plan ahead."

The 44-year-old printing and advertising executive acknowledged that "Some tax increase may be required to do the complete job." Classrooms now needed can't be built with available funds, he explained, so that a bond issue appears "the only logical means for providing these funds."

"Had this problem been faced squarely several years ago a bond issue might not now be necessary. Prompt action now may avoid the necessity of even larger bond issues at some future date."

Mr. Schinhan also urged that the County try to get needed funds from revenue-producing state properties in Chapel Hill. He added that "A concerted effort should be made to encourage logical industrial development."

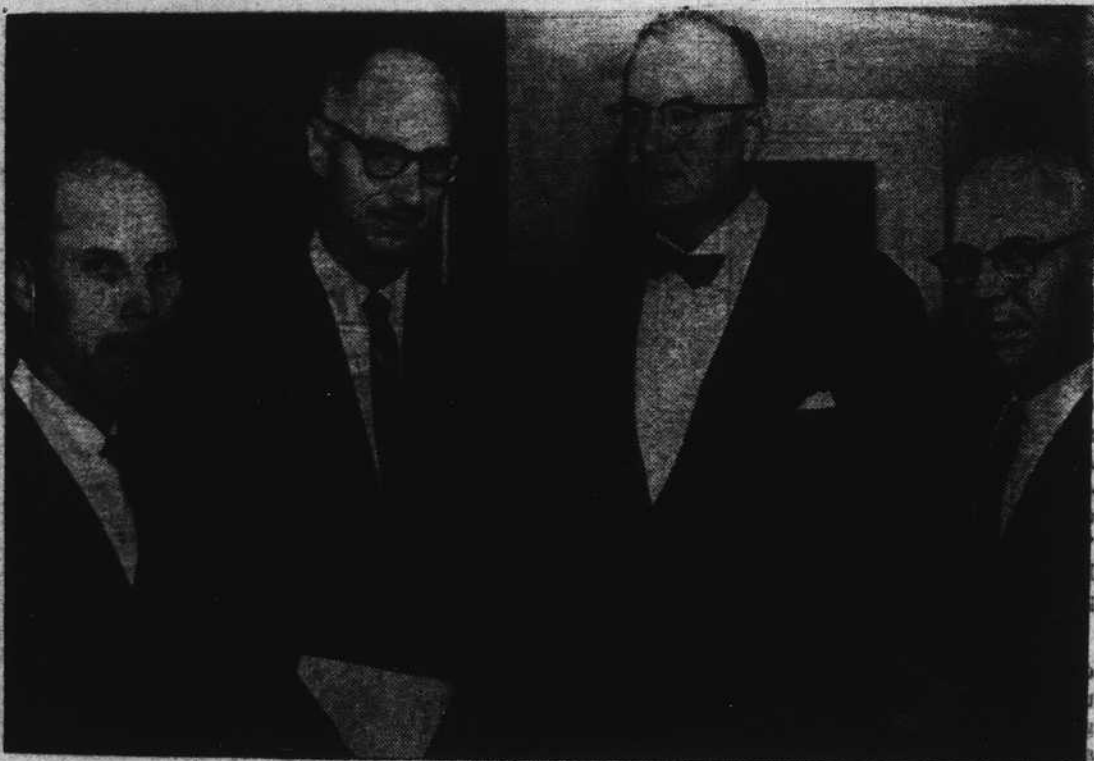
He would support a referendum for a higher Chapel Hill school tax, Mr. Schinhan said, whenever the citizens indicated that it might be required to provide the level of school services they demanded.

ABC store profits are needed to meet current school construction needs, in Mr. Schinhan's opinion. If allocated to current operating expenses of the schools they'd bring "proportionately greater tax increases . . . to provide for current construction needs."

10-year commitment proposed for schools

Commissioner Donald Stanford presented an interesting proposal for meeting the estimated six-million dollar minimum building needs of all schools in the County during the next decade without borrowing.

ABC store profits at \$180,000 a year	\$1.8 million
.30 pct. population increase (Highway Comn. estimate), assuming continuation of annual tax revenue increase of \$33,000	.33 million
Debt service retirement. During the next 10	



DEMOCRATIC COMMISSIONER CANDIDATES — Seen before the League of Women Voters-sponsored candidates meeting in Chapel Hill on Tuesday night are Democratic County Commissioner candidates (left to right) Donald Stanford, Philip Schinhan, Hugh Wilson and Harvey Bennett.

years the debt service levy will decrease from \$27 per \$100 to \$17 — which would in effect increase available funds by	.50 million
Current tax levy for capital outlay (\$297,000) continued 10 years	2.9 million
Five-cent tax rate increase (from \$.95 to \$1.00) for 10 years	.45 million
Total 5.98 million	

Mr. Stanford called this plan "certainly preliminary," and noted it didn't take into consideration increased expenses for other county agencies or for current operating expenses of schools. But he endorsed this idea because "I prefer pay-as-go financing wherever possible."

He said also that he'd support a higher Chapel Hill school tax referendum "if requested by the school board with substantial community support."

"I will support the school budget submitted by the Chapel Hill and Orange County School Boards as I will support the requests coming from the other agencies of the County," he declared. "Support and request for finances are one thing. The problem lies in how these can be met."

As to other possible sources of income for the County, Mr. Stanford cited these: (1) Ask the state to pay the full cost of its statutory obligations — particularly the excess cost of some school current operating expenses which the County must fill out;

"(2) Continue to press for delinquent tax collections . . . but also enforce the principle of equitable taxation."

(3) Payment in lieu of taxes for the University's revenue producing properties; also place valuations on this property at revaluation time in 1965, so its worth can be determined. He endorsed the County Commissioners Association's recommendation to study tax exemptions all over the state. "Certainly this would aid in pointing out the crisis created here by this non-taxable wealth," declared Mr. Stanford.

As to setting up a single school organization for both races, Mr. Stanford said he didn't think the system would be forwarded by this. "The problem we're facing in education is not one of segregation but finance," he said.

Wilson boosts trend to current financing

Mr. Wilson, a Bingham Township dairy farmer, urged a pay-as-you-go approach to the County's 10-year school building needs, noting "The commissioners have come nearer to doing this as the years have gone along."

He also urged that a medical examiner plan be set up as assistance to the county coroner; and called for pay "that will compete with private business for county employees."

"The first need I see is to pay the sheriff and deputies better," said Wilson. "They have a dangerous job that requires a great number of hours. They should be rewarded with pay higher than that of laborers."

Answering a question on setting up a one-system school for both races, he declared "My main interest in running for commissioner is to forward the cause of education, and I do not be-

(See CANDIDATES, Page 5)

Police form corporation for clubhouse

Police Capt. Coy E. Durham has been elected President of the newly-formed Chapel Hill Police Association, Inc.

The group plans to build a clubhouse and pistol range on its newly-acquired 30-acre tract near Blackwood Station five miles north of Chapel Hill. Capt. Durham said the private corporation included all 24 members of the police department as well as the traffic clerks. It's to be supported by monthly dues which will go into a building fund. Construction is to start this summer, he added.

Other corporation officers are Sgt. Charles Edmonds, Vice-President; Lt. Herman Stone, Secretary; Patrolman Amos Horne, Treasurer; and Lt. C. E. King, Patrolmen Lindy Pendergrass, Eugene Cozart, Paul Minor, and John Nesbitt, directors.

STUDENT SINGERS TO PERFORM

Two students of the UNC Music Department will perform in separate recitals Sunday afternoon in Hill Hall. At 3 p.m., Martha Teachey, Winston-Salem soprano, accompanied by Stewart Powell of Wallace, will present selections by Schubert, Bizet, Bircht, Barber and Menotti. At 8 p.m., James Gibbs, tenor of Asheville, will give a senior recital which will include numbers by Handel, Bach, Schubert, Vaughn Williams and other composers. His accompanist will be Marjorie Crane of Chapel Hill.

RACES POSTPONED

Race Directors here at the nine-tenths mile Orange Speedway, Bill France and Enoch Staley have announced the scheduled 100-mile Grand National circuit stock car race slated for Sunday, May 15, has been postponed.