

Orange Peelings

"YE OLDE CONTEMPORARY." That was the best in-a-line description Architect Don Stewart could come up with for the proposed Chapel Hill central fire station when the reporter inquired about it. The building, a recommended sketch of which was shown on the front page of The News last week, is envisioned by its designer as functional, but embodying both traditional and modern elements: Traditional features such as a hip roof, copper flanges, local stone walls, and stucco panels; and modern design in simple lines and aluminum window frames.

VANDALS, BELIEVED TO be brethren from another fraternity, broke into the Sigma Nu house one wild night recently. They entered by heaving a decorative cement ball through the French doors. After ransacking the basement, they turned over a piano, then capped it off by running a garden hose into the front parlor and turning it on. When it was all discovered the next day the basement was inches deep in water, and the carpeting, practically floating.

TRAVEL AGENCY ENTRE-preneur Jimmy Wallace was reduced to foot padding on the Dare beaches recently when his car was stolen in Nag's Head. Mr. Wallace reported it to all law enforcement authorities, and they assured him of their vigilance in searching for it. Six days later a woman living two blocks from the sheriff's office in nearby Manteo called to tell him a strange car had been parked in front of her house for the last five days. Yup, it was Jimmy's vehicle, quite intact, and with keys yet in ignition.

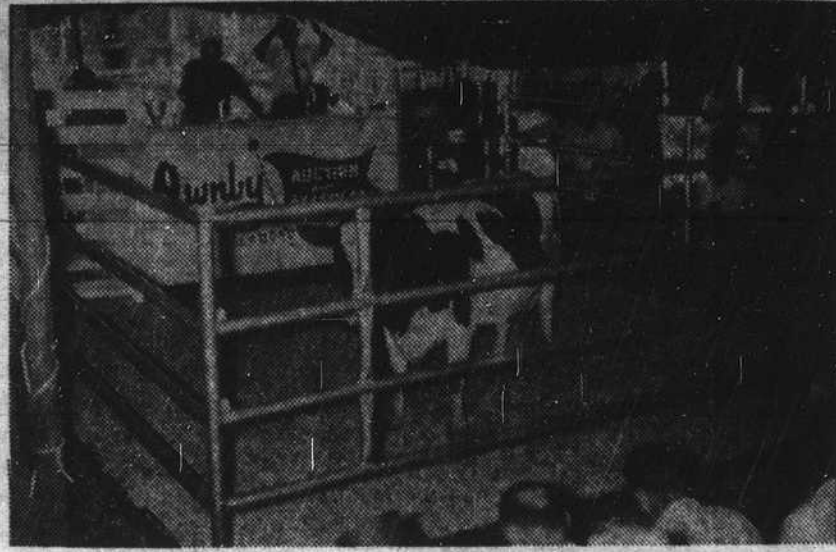
ALL OF THE REPAIR WORK out on the Raleigh Road at the base of Blake Hill was necessitated when the Gas Company, running a main beneath the highway to Watts Hill's new homesite, shoved a two-inch steel boring pipe clean through an eight-inch water main. The asphalt surface literally ripped for the next 45 minutes until the flow could be closed off. Pressure on the water line coming down the hill mounts up to about 150 pounds an inch. The gas folks thought they were boring extra deep to avoid other pipes. But the water folks had laid the pipe six feet deep for the same reason!

ACCORDING TO OFFICIAL records from the University, there were 62 Negroes enrolled for the first session of Summer School—an all-time record for Negro pupils at UNC. The total student enrollment for the first term was 4,643. Most of the Negroes were in graduate school, many were public school teachers, and the division of men to women was understood to be fairly even. During the regular '61-62 school year there were 40

Continued on Page 3

Circulation Today
7,418
99 PCT. DISTRIBUTED IN
ORANGE COUNTY

Bossy on the block-- big Orange sale...



UNDER THE BIG TOP—One of the largest cattle dispersal sales in the area was reeled off yesterday at the Don Mathesons' Berry's Mill Farm on St. Mary's Road, near Hillsboro. Carnival atmosphere pervaded the premises as several hundred prospective buyers crowded the tent-covered arena for the auction of 92 head of registered and grade Holsteins and a large quantity of farm machinery. Orange County buyers were prominent among the bidders, who came from all parts of North Carolina



and some neighboring states. A former speaker of the House in the General Assembly was among the group. Food was served by members of the St. Mary's Home Demonstration Club. Left, above, an auction scene as Shorty, New Berrys Mill 4303897, sired by Pabst Repride Glen, was knocked down for \$280. At right, an apparent casual spectator keeping a tally on the prices, Don S. Matheson, the owner, seated with his daughter, Sweet Briar student, Elizabeth.

The News

of orange county

—Chapel Hill, Hillsboro, Carrboro—Between and Beyond—

VOL. 70, NO. 31

HILLSBORO AND CHAPEL HILL, N. C., THURSDAY, AUGUST 2, 1962

20 PAGES

The private war of Bill Windham..



...He'll tell Terry tomorrow

TO FILL OR NOT TO FILL — THE QUESTION — Bill Windham of Efland illustrates his dilemma as he'll present it to Gov. Sanford in Raleigh tomorrow. His 16-acre home tract is hemmed in on the Efland side by the Southern Railroad, and on the opposite side by the limited access dual-lane U. S. Highway 70. Continuously since last winter Windham has covered up ditches and cut down a fence built at the highway so that he could have auto-access to his place. State highway authorities have warned him about filling in their ditch, dug to prevent him entering the highway by this route. Windham is adamant that the highway folks should provide him an auto entrance to his property.

—Story on Page 3