

The 'out-cool' TCC is all the way out! . . .

# 'Don't be Typical,' new coeds told

By CHARLES CLAY  
 What is it that tries to "out-cool" everybody else, is heavily made-up and "pseudo-sophisticated," and keeps its nose "high in the air" except when it meets "an occasional BMOC" (big man on the campus)?  
 It's a TCC (typical Carolina coed), according to one male student leader here who may or may not qualify as an expert. And Car-

olina's new crop of coeds were admonished to avoid becoming a TCC like the plague.  
 It took place at a panel discussion for Tar Heel women students on the subject "Carolina's Darker Side: A Myth Exploded."  
 The purpose of the panel, brain child of Assistant Dean of Women Daryl Farrington, was to disabuse the coeds' minds of a lot of erroneous notions about

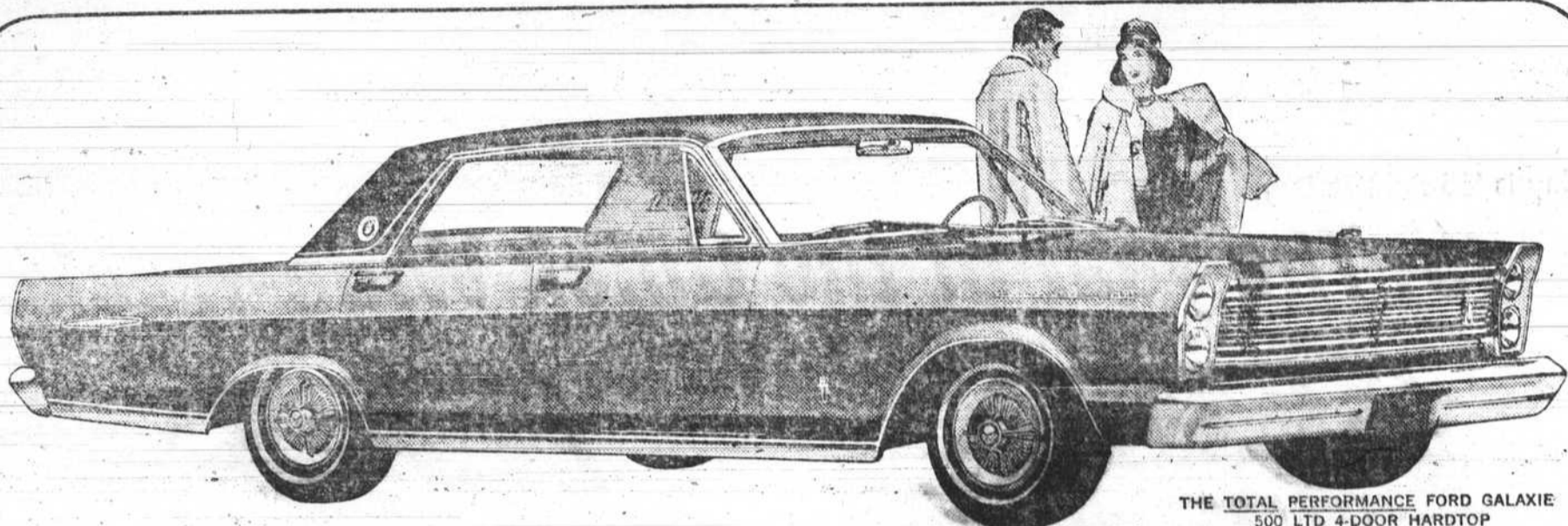
the University here during orientation.  
 "When you see a boy on the campus and he smiles and says, 'Hi,' don't think you're supposed to raise that nose up in the air," said student panelist Harrison Merrill of Atlanta "That isn't true . . . It's the way of the TCC."  
 The boys are only "looking for encouragement, any kind of en-

couragement," Merrill added. "They won't say, 'Gee, she smiled at me. She must be fast.'"  
 Others on the panel included Ann Palmatier of Chapel Hill, a student in nursing; student Jane Hanson, also of Chapel Hill, who spoke from the sorority viewpoint; Dr. Clifford Reifler, head of the Student Psychiatric Center; and Dr. John Clayton of the Department of Radio, Television and Motion Pictures.

that Carolina is an "easy" school, the panelists agreed. Actually, girls who go in for a lot of dating "just aren't going to be able to do the work," the coeds were told.

But the discussion kept getting back to the TCC and the TCC (typical Carolina gentleman or playboy type.)

"Beware of the typical Carolina gentleman too," put in the sorority sister.



THE TOTAL PERFORMANCE FORD GALAXIE 500 LTD 4-DOOR HARDTOP

Now... look into the many worlds



THE TOTAL PERFORMANCE MUSTANG 2+2

of Total Performance for '65



THE TOTAL PERFORMANCE FAIRLANE 500 SPORTS COUPE

—best year yet to go Ford!

From a new reversible key to a brand-new luxury series, the '65 Fords are so new you just have to see them for yourself.

**New world of elegance . . .** 17 solid, quiet Fords, including a new super luxury series—the LTD 2- and 4-Door Hardtops. New body, frame and suspensions give the smoothest,

quietest ride ever. New wider tread, new spaciousness, new Big Six engine.

**New "cool" world of Mustang . . .** Fastback 2+2 joins the Hardtop and Convertible. Many luxuries standard. New options include front disc brakes.

**New world of value . . .** 8 Fairlanes, bigger,

handsomer, better buys than ever. A livelier, smoother new Six — 2 hotter V-8 options. 3-speed Cruise-O-Matic optional.

**New world of economy . . .** 13 Falcons with up to 15% greater fuel economy as a new livelier Six teams with optional 3-speed Cruise-O-Matic. New battery-saving alternator.



THE TOTAL PERFORMANCE FALCON FUTURA HARDTOP

Best year yet to go Ford!  
 Test Drive Total Performance '65

# FORD

MUSTANG • FALCON • FAIRLANE • FORD • THUNDERBIRD  
 RIDE WALT DISNEY'S MAGIC SKYWAY AT THE FORD MOTOR COMPANY'S WONDER ROTUNDA—NEW YORK WORLD'S FAIR

PRODUCTS OF MOTOR COMPANY

See them at your neighborhood Ford Dealer's tomorrow!