

KWIK KWIZ

If it were not possible for TV to cover both, would you rather see the Astronauts flight or Nixon's trip?



MRS. WILLIE CLARK, N. Coolidge, retired — "If it were not possible for both to be covered — then I'd say the president's trip around the world."



R. C. ATHEY, Duke Street — "I think the moon flight. I'd sure like to see what's up there."



MRS. GERTIE MCCRARY, N. Coolidge housewife — "The president's trip."

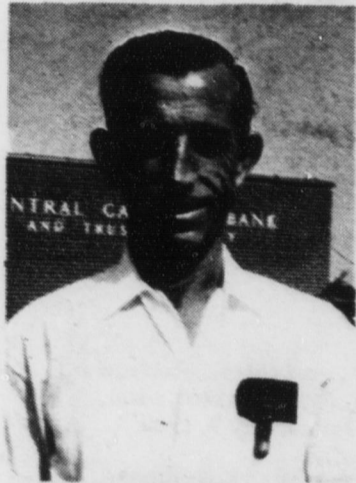
NEW POLICEMAN

Eugene Siller of Crestview Drive has accepted a position with the Mocksville Police Force. He was formerly employed with Erwin Mills of Coolidge.

Chief of Police Joe Foster said that Siller would work the day shift at the present time but would later move to the evening and night shift.

He replaces James Robertson who resigned.

Photos and Interviews
By MARLENE BENSON



RAY OVERCASH, Duke Street, Cone Mills — "I think it should cover the moon trip, cause he could take a trip around the world anytime."



MRS. GLENDA SMITH, Joyner Street housewife — "I'd say the astronauts' flight cause that is making history."

MAKE CONFETTI

... out of your bills with a Debt Consolidation Loan from Wachovia. You'll feel like celebrating when you learn the rates. Budget payments, too.

Time Payment Dept.
Wachovia
Bank & Trust, N.A.

Open until 5 Fridays until 6

Play Skool

For 3 and 4 year olds.

Opens Tuesday, Sept. 9th.

at the home of

Mrs. Donald Trueland

Rt. 4 Boxwood Farms
Mocksville, N.C.

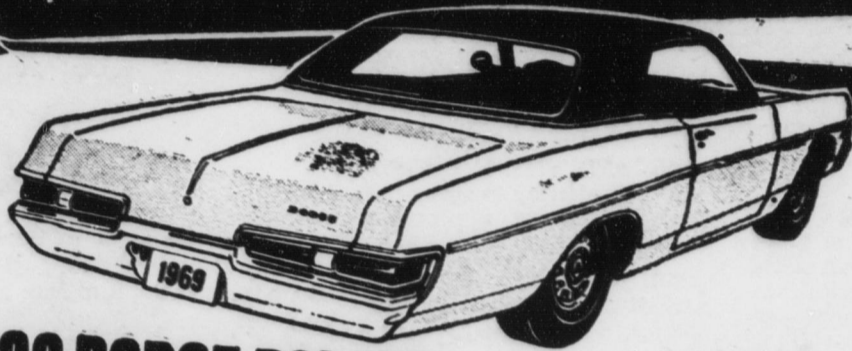
HOURS: 9 to 11:30 a.m.
Tuesday through Friday

For Further Information, Call

284-4091

WHEE-EEELS!

TWO DOOR HARDTOP SPECIALS

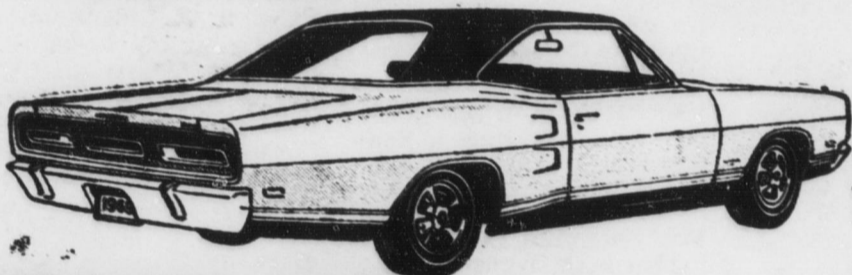


'69 DODGE POLARA

\$3328.43

1969 Dodge Polara 2-Door Hardtop Equipment includes: . . . Tinted Windshield . . . 318 cubic inch engine . . . power steering . . . power brakes . . . radio . . . heater/defroster . . . deep dish wheel covers . . . torque flite transmission . . . air condition . . . whiteside wall

tires 8:25 x 15-inch . . . concealed windshield wipers . . . deep-pile carpeting . . . 3-spoke steering wheel with padded hub . . . cigarette lighter . . . glove box door lock . . . link-type sway bar . . . quiet door latches . . . rear seat foam cushion pad.

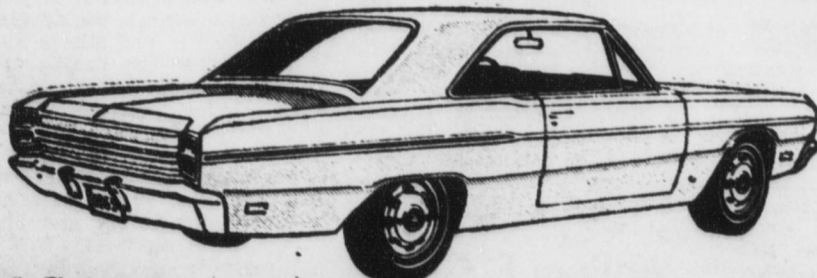


'69 DODGE CORONET

\$2854.19

1969 Dodge Coronet 440 2-Door Hardtop . . . Equipment Includes: White Hat Special . . . Torque Flite Transmission . . . 318 cubic inch engine . . . tinted windshield . . . 3-speed wipers . . . radio . . . heater/defroster . . . white sidewall tires 7:75 x

14-inch . . . light group . . . belt mouldings . . . deep dish wheel covers . . . bumper guards, front and rear . . . remote control mirror . . . pedal dressup group . . . rear arm rest . . . cigarette lighter . . . dual horns . . . vinyl interior trim.

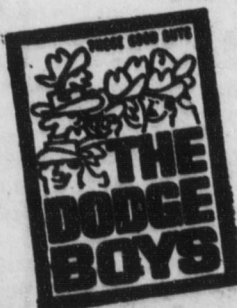


'69 DODGE SWINGER

\$2279.80

Our lowest price car with more miles per gallon than ever . . . 24.2 in the Union/Pure Oil

Trials . . . A real economy champ!



**FURCHES
MOTOR COMPANY**

226 Depot Street

Mocksville, N. C.