

THE Farmville Enterprise
FARMVILLE, N. C.
G. ALEX ROUSE,
Sole Owner, Editor and Manager.
Published by
THE ROUSE PRINTERY
SUBSCRIPTION PRICE:
One Year \$1.50
Six Months .75
Three Months .40
ADVERTISING RATES:
Display (Minimum) 30c per inch.
Readers, per line .5c
Published weekly and entered as Second Class Mail Matter May 20, 1910, at the Postoffice at Farmville, North Carolina, under the Act of March 3rd, 1879.

U. D. C. MEETING

Mrs. C. L. Beaman was hostess on Friday to the U. D. C. chapter. Mrs. G. M. Holden, president, occupied the chair and the chaplain, Mrs. A. B. Walters, led the devotional. An attendance prize for the year was offered by Mrs. Holden during a brief business session. A poem, "Questioning," read by Mrs. J. Y. Monk was very appropriate for the first meeting of the year and two interesting selections "Lee's Home, a Shrine," and "Stonewall Jackson" by Lloyd George, were read by Mrs. A. W. Bobbitt and Mrs. J. W. Parker. Refreshments were served after the program.

SUNDAY SCHOOL PAYS TRIBUTE TO SUPPT

As an expression of love and esteem for their superintendent, Jas. R. Carr, the pupils of the Sunday School of the Christian church presented him with a handsome watch on Sunday morning during the closing exercises. The speech of presentation was made in the presence of the school by the pastor of the church, Rev. Tandy. Mr. Carr recently accepted a position as Greenville agent for an insurance company and moved his family there this week. He had been superintendent of the Christian Sunday school for the past six years and both he and Mrs. Carr were very active in the various phases of church and community life.

Freezing weather in December has caused a heavy loss to Irish potato growers of Avery County.

ATTENTION EX-SERVICE MEN!

Commander George E. Freeman, and Adjutant Jim Caldwell, will be present at meeting to be held in basement of Christian church Friday evening, January 10th, 1930, at 6:30 o'clock. All ex-service men are invited to attend. Free supper to all ex-service men. Come out and enjoy the message of Commander Freeman.
John Hill Paylor, Commander
C. F. Baucum, Adjutant.

HOBBO PARTY

Quite novel and most enjoyable was the hobbo party given by Mrs. Stephen Gardner on a recent evening, in honor of Miss Eunice Edge of Rocky Mount. Invitations, sent to 20 of the younger boys and girls, requested that rags and tatters and tramp clothing would be in vogue and a prize offered for the best dressed hobbo. Stunts and games were enjoyed and sandwiches were served at the neighbors houses, when begged for at the back doors. Then the merry party was told to go to the Farmville drug store for further refreshments. Here they were arrested after ice cream was served, by a real policeman, being called in by the store proprietor, who could not collect from his customers. They were carried to jail and sentenced by the mayor, but allowed to return to their homes on probation.

SLAVE TO ACCURACY

Old Lady—My poor man, I suppose you have had many trials in your life?
Tramp—Yes, but only one conviction.

Friend—Old man, I hate to tell you but your wife is fickle.
Husband—Ah! She's thrown you down too, eh?

JUST ANOTHER ONE

John (over telephone)—That you sweetheart?
Phyllis—Yes, who's talking?

You did not seem impressed by Brother Calem's glowing description of Heaven.
Naw, you see, he's a real estate agent.

Richmond County farmers have gone in heavily for cover crops this winter. An increased acreage of small grain, vetch and Austrian peas have been planted.

ANNOUNCEMENT IS MADE OF THE NEW CHEVROLET

The Manufacturers Say This Is Best Car Yet Turned Out; Six Cylinder

The Chevrolet Motor Company announces a new car for 1930 known as "The Greatest Chevrolet in Chevrolet History."

Announcement of the new car comes right at the close of Chevrolet's greatest year, for the sensational success of the six-cylinder Chevrolet, introduced just a year ago, resulted in an output of 1,350,000 cars this year, breaking by a wide margin all former Chevrolet annual production records.

In making public Chevrolet's plans for 1930, W. S. Knudsen, president and general manager, declared that with the improvements incorporated in the new car, Chevrolet was anticipating a volume of business that will equal, if not surpass, the phenomenal record of 1929. And, in order to accommodate an early demand, production is being speeded with all haste consistent with the precision methods for which Chevrolet manufacturing operations are famous.

Scores of distinct improvements have been made in the 1930 Chevrolet line, the factory announces. Greater beauty, added safety factors, improved riding comfort and better all-round performance with added power, and faster acceleration are announced as features of the new line.

Larger tires, small wheels, Delco-Lovejoy hydraulic shock absorbers at all four wheels, Fisher slanting non-glare VV windshield and vastly improved four wheel braking system are some of the highlights.

Brakes are of the internal expanding "articulated shoe type" both front and rear, those on the front wheels having two shoes while those on the rear have four. These brakes, also, are fully enclosed giving perfect protection against water and dirt.

The attractive new closed bodies, in a variety of colors, carry the famous Fisher stamp of craftsmanship. Eight models, three of which are new to Chevrolet, comprise the line. Of the eight, five are closed and three are open. The closed cars are the sedan, coach, coupe, sport coupe and club sedan. The open models are the roadster, sport roadster and phaeton. The models new to the line this year are the sport coupe, sport roadster and club sedan.

The six cylinder valve-in-head en-

gine introduced a year ago, after four years of research and development, has been further improved and refined. Since the introduction of the six a year ago, test cars have run up more than a million miles of driving at the General Motors Proving Ground in the working out and the justifying of the improvements to be found in the 1930 car. All the resources of the General Motors Research Laboratories and the Chevrolet experimental laboratory were placed at the disposal of the Chevrolet engineering staff in this work.

The result of the efforts of this engineering talent is a smoother, quieter, more powerful motor. The new engine, fully enclosed, with a high compression non-detonating head develops 50 horsepower.

Smother operation of the engine and longer life are assured through the use of light weight pistons. Steel backed crankshaft bearings have been adopted because they are more durable.

The clutch on the new car has been improved by the adoption of an integral disc, made in one piece of high carbon steel. This will give the 1930 car smoother and easier clutch action with quieter operation and longer service.

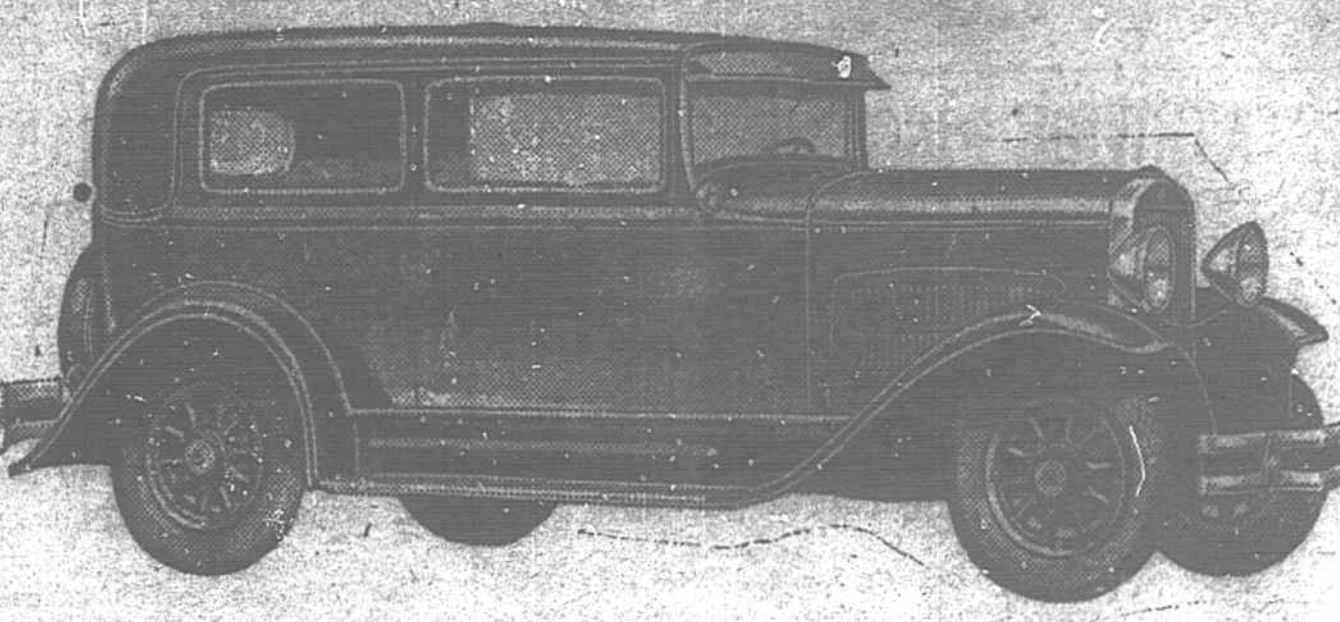
Easier riding and greater quietness are accomplished through a new type of self-adjusting spring shackle in which bushings in the spring eyes and brackets are eliminated, thus doing away with wear. Hardened and tapered ends, are pressed into the springs and brackets while oil forced into them forms a large reservoir, making frequent lubrication unnecessary.

The position of the steering wheel in relation to the seat has been changed, making the driver's position much more comfortable. The horn button in the center of the steering wheel has been made more accessible and easier to operate by increasing the height of the crown and improving the design of the rubber bellows.

The instrument panel design and arrangement this year is entirely new. The instruments are all mounted on a single carrier plate which is assembled from the rear. This permits the removal of individual instruments for service. Spark and throttle controls as well as choke are located on the instrumental panel, which is indirectly lighted.

The sedan stand out as a de luxe model with chrome-plated cowl lights and attractive chrome-plated cowl mouldings. The body is finished in Boulevard maroon with black mouldings, rear quarter and wheels. Striping on both body and wheels is of Aurora red while the trim is in harmonizing color of a high grade moldair.

New Body, New Beauty, New Motor In New Essex Challenger Coach



This New Essex Challenger Coach, new from radiator to rear bumpers, with distinctive, modernistic lines and interior treatment, will carry the banner of the type that Essex pioneered and made popular. Larger and roomier, because of increased wheelbase, this Challenger model has a new collapsible seat which gives easy access to the rear compartment in which three full grown passengers can rest comfortably in the new luxurious cushions. New performance is achieved through an entirely new engine.

We invite you...

to call and see the new **Essex Challenger** on display in our show rooms

A New Car in its entirety, the New Challenger's performance standards are as greatly increased as its beauty

LARGER — ROOMIER — SMARTER

Come in today and see it and place your order for early delivery.

Motor Service Co.
B. O. Paylor, Sales Manager Farmville, N. C.

Farmville's Greatest Sale Continues!

The Bankrupt Stock of W. E. Joyner is Sacrificed for—

QUICK SELLING!

Further Drastic Cuts have been made on this Splendid New Stock, and in order that we may save the expense of moving, we are passing these reductions on to the buying public of Farmville and surrounding territory. Complete lines of Suits, Overcoats, Men's and Women's Oxfords and Pumps are here, and at prices that mean the saving of more than half on every purchase. There are hundreds of items too numerous to mention. All we ask is, that you ask your neighbor, he will tell you that the savings are worth while.

<p align="center">Come and get your share of this fine stock of:</p> <p align="center">MANHATTAN SHIRTS KNOX and SCHOBLE HATS MICHAEL-STERN SUITS NUN-BUSH and THOMPSON SHOES FOR MEN WTT'S SHOES FOR THE ENTIRE FAMILY BEAUTIFUL HOSE FOR THE ENTIRE FAMILY COMPLETE LINES OF GENT'S FURNISHINGS</p>	<p>LADIES' SPECIALS</p> <p>ALL BLOOMERS — VALUES TO \$2, Sale price 95c</p> <p>FULL FASHIONED HOSE — PURE SILK — POINTEX AND OTHER GOOD BRANDS — VALUES TO \$2.00, Sale Price— 95c</p> <p>ONE LOT LADIES HIGH GRADE OXFORDS AND STRAP PUMPS — Values to \$5.95, Sale— \$1.95</p> <p>ALL OTHER SHOES FOR MEN, WOMEN & CHILDREN AT AND BELOW ORIGINAL WHOLESALE COST.</p>	<p>MEN'S DEPARTMENT</p> <p>MANHATTAN SHIRTS BEAUTIFUL PATTERNS \$1.29</p> <p>KNOX HATS — \$8.50 Value \$4.95</p> <p>SCHOBLE and ETCHINSON HATS \$2.95</p> <p>ALL MEN'S HOSE — HALF PRICE</p>	<p>NUN-BUSH and THOMPSON SHOES FOR MEN — \$10 value \$4.95</p> <p>THREE SEASON! UNION SUITS Regular price \$1.50, Sale Price 95c</p> <p>ALL MEN'S TIES — Values to \$2.50 65c & 85c</p> <p>STORE IS FULL OF BARGAINS!</p>
	<p>PLENTY OF WORK CLOTHES FOR THE MEN AND BOYS OUR TIME IS LIMITED—LET THIS BE YOUR OPPORTUNITY TO SAVE.</p>		
	<p>ROTH-STEWART COMPANY</p> <p>Purchasers of The W. E. JOYNER BANKRUPT STOCK Farmville, North Carolina</p>		