

New Cotton Campaign Now Gets Under Way

Farm agents from North Carolina's 67 cotton growing counties were scheduled to gather at State College on Thursday, December 23, to study the cotton contracts which will be offered growers by the AAA within a few days.

The sign-up drive will be launched the first week in January, which has been designated "Cotton Sign-Up Week." Every effort will be made to place the contracts in the hands of the farmers as soon as possible, Dean I. O. Schaub, head of the State College extension service, stated.

Charles A. Sheffield, assistant extension director who will have charge of the cotton sign-up, Dean Schaub, other extension service officials, and representatives of the AAA from Washington were to be at the meeting in Raleigh Thursday to explain the contracts to the agents and discuss any problems that might arise.

Mr. Sheffield pointed out the urgent need for North Carolina to retire 300,000 acres from cultivation next year and limit the crop to less than 450,000 acres. The AAA has set out to raise cotton prices by cutting down the overburdening surplus. To this end, farmers of the nation have been asked to limit their crop to 25,000,000 acres, a reduction of 40 per cent under the average for the five-year period from 1928 through 1932.

Growers who sign reduction contracts will be given both rental and parity payments. The rental for the acres retired from cultivation will be calculated at the rate of three and one-half cents a pound on the average production of those acres during the 1928-32 period, with a provision that not more than \$18 an acre shall be paid.

The parity payments will be at least one cent a pound on next year's cotton allotment to each grower, regardless of how the market stands. In case the market fails to bring parity prices, the AAA will increase the parity payments if necessary to make up the difference.

Urges Mule Colts Raised At Home

North Carolina farmers must replace about 22,000 horses and mules each year. So far these replacements are being shipped into the State and if each animal costs only \$150 a head, Tarheel farmers must spend a gross of \$3,300,000 to replace their failing work animals.

"Few horses or mules are seen in cities and towns but out in the country, this form of power is still used almost exclusively by landowners," declares Prof. Fred M. Haig of the animal husbandry department at State College. "At present, we have 75,000 horses and 265,000 mules in the State. The average life of these animals is about 15 years which makes it necessary for Tarheel farmers to replace about 22,000 animals each year. As most of these animals are purchased from without the borders of the State, this constitutes a heavy drain upon the farm income."

Therefore, Prof. Haig advises that at least enough colts be grown at home for replacement purposes. This can be made practically a non-cash cost, he says, because feed grown at home on adjusted acres might be used to grow the colts at little cost. The colts could be broken to harness when coming three years of age and if wisely handled will make excellent work animals.

Three things are essential for success in raising colts at home, Haig says. First select good mares and high class stallions or jacks. Take good care of the mare and feed her properly while she carries the colt. Then, while the foal is growing, handle him with gentleness and see that he is properly fed.

Forty 4-H club boys of Caldwell County planted 25 black walnut seedlings each during the past fall.

Good Year Safety Record Best In Company History

Educational Program Cuts Accidents To Remarkably Low Minimum

Akron, Ohio, Dec. 28.—Following a program of cooperation and education, employees of the Goodyear Tire & Rubber Co., during the past few years completed the best safety record in the history of the concern, officials have announced.

With 15,000 employees, Goodyear's Akron plants sustained 2,648 lost time accidents in 1927, but by following a systematic effort to promote safety on every job this figure was cut to 523 in 1930, while to date in 1933 the remarkably low record of 201 lost time accidents has been attained.

The Safety Department in the company's home offices in Akron heads safety activities of Goodyear factories and mills throughout the world, but has direct supervision over the Akron plants only. Each subsidiary has its own safety organization, following closely the instructions formulated by the parent organization.

Among interesting safety records made by Goodyear subsidiaries is that of the Goodyear-Zeppelin Corp., which built the giant Navy airships, U. S. S. Akron and U. S. S. Macon, without a single fatality or permanent injury. In the rubber plant at Bowmanville, Canada, not a single lost time accident has been reported since February, 1931, while the tire factory at Gadsden, Alabama, completed the year 1932 without a lost time accident. The factory at New Toronto, Canada, has had a clean record since April, 1932.

During the current year only three lost time accidents have been reported in all of Goodyear's seven cotton mills. One cotton mill has reported no accidents since November, 1931, while another has a clean slate since April, 1932.

Goodyear has been intensely interested in a safety program since the company's inception, 35 years ago. Safeguarding of machinery and instruction of employees have been paramount in every manufacturing process. Statistics show that in the United States 15 per cent of all accidents are due to machine or equipment failure, while the remaining 85 per cent are due to carelessness, and for that reason Goodyear places responsibility for accidents directly upon the supervisors of its various departments.

New Frills and Flounces. A Page of Authoritative and Newest Fashions by Famous Dress Creators Illustrated by a Well-known Artist in The American Weekly, the Magazine Distributed with the BALTIMORE SUNDAY AMERICAN, issue of December 31. Buy your copy from your favorite newsboy or newsdealer.

All small grain has been planted and much of the winter wood supply hauled in Lincoln County. Farmers admit being in better condition than in some years past.

Use This Laxative made from plants

TRANSFORM'S BLACK-DRAUGHT is made from plants that come up from seeds and grow in the ground, like the garden vegetables you eat at every meal. NATURE has put into these plants an active medicine that stimulates the bowels to act—just as Nature put the materials that sustain your body into the vegetable foods you eat.

NOTICE OF SALE OF LAND FOR NONPAYMENT OF TAXES

PITT COUNTY vs. A. R. CANNON and WIFE, MRS. A. R. CANNON

By virtue and in pursuance of a decree of the Superior Court made in the above entitled cause on October 25, 1933, the undersigned Commissioner, appointed for the purposes therein named (it being a suit to foreclose the lien on the hereinafter described land held by the County for the non-payment of taxes) will expose for sale to the highest bidder, at public auction for cash, on Monday, the 1st day of January, 1934, at the Court house door in the city of Greenville, North Carolina, at 12 o'clock, P. M., the following lots of land situated in the County of Pitt, State of North Carolina, described as follows:

Under and by virtue of the power of sale contained in that certain Mortgage executed by E. S. Sheppard and wife Sue May Sheppard, to J. H. Darden, under date January 1st, 1913, of record in Book I-12 at page 619 of Pitt County Registry, default having been made in the payment of the indebtedness therein described, and demand having been made upon me by the holders of said notes, the undersigned will sell for CASH, before the Courthouse door in the Town of Greenville, N. C., on Thursday, January 4th, 1934, at 12 o'clock Noon, the following described land:

Situate, lying and being in the Town of Farmville, County of Pitt, State of North Carolina, Beginning at a point on the East side of Main Street, one hundred seven feet and four 1/2" from Wilson Street, in the center of a wall, J. T. Thorne's, S. W. Corner, and runs Easterly and parallel to Wilson Street One Hundred nineteen and 7/12 (119-7/12) feet; thence at right angles and Southerly Sixteen and 10/12 (16-10/12) feet; thence at right angles and Easterly and parallel to Wilson Street Seventy two and 3/12 (72-3/12) feet; thence at right angles Southerly and parallel to Wilson Street Eighty One and 10/12 (81-10/12) feet; thence Southerly and parallel to Main Street to a point in the Lang line; thence Westerly along and between the wall of the Lang Store and that of (formerly) the Hub Hardware Co.'s furniture store One Hundred and Ten feet to Main Street; thence with Main Street Northerly sixty seven feet to the beginning, being that same lot this day conveyed to the said E. S. Sheppard and wife Sue May Sheppard by the said J. H. Darden and wife Sarah C. Darden, reference to which deed is hereby made.

Said sale made to satisfy the indebtedness secured thereby, and made by Executor of Estate J. H. Darden, under authority granted in Section 2578 Consolidated Statutes.

This 2nd day December, 1933. Sarah C. Darden, Executor Estate J. H. Darden, Mortgagee. John Hill Paylor, Attorney.

NOTICE OF SERVICE BY PUBLICATION

North Carolina—County of Pitt—In the Superior Court.

CHRIST KATSONER vs. HELEN KATSONER

The defendant Helen Katsoner, will take notice that an action entitled as above has been commenced in the Superior Court of Pitt County, North Carolina, to obtain absolute divorce and the said defendant will further take notice that she is required to appear at the office of the Clerk of the Superior Court of said county in the courthouse in Greenville, on the 3rd day of January 1934, and answer or demur to the complaint in said action, or the plaintiff will apply to the court for the relief demanded in said complaint.

This the 4th day of December, 1933. J. F. HARRINGTON, Clerk Superior Court.

SALE OF VALUABLE FARM PROPERTY

Under and by virtue of the power of sale contained in that certain MORTGAGE executed by R. T. Strickland under date of March 6, 1931, of record in Book R-18 page 300, of Pitt County Registry, default having been made in the payment of the indebtedness therein described, the undersigned will sell for cash before the court house door in the town of Greenville, N. C., on—

Friday, January 12, 1934, at 12:00 o'clock Noon

the following described real estate: First Tract: Lying and being in Pitt County, Beaverdam Township, and bounded as follows: On the North by Mrs. Lucy Rasberry, on the East by C. H. Rasberry Est., on the South by Mrs. Bettie Nichols, on the West by C. H. Rasberry Est., containing 13 acres more or less.

Second Tract: Lying and being in Pitt County, Beaverdam Township, and bounded as follows: On the North by Mrs. Bettie Nichols, on the East by Fannie Nichols, on the West by Munford & Arthur, Joe Joyner and others, containing 13 acres more or less.

This the 2nd day of December, 1933. J. R. DAVIS, Trustee.

ADMINISTRATOR'S NOTICE

Having qualified as administrator of the estate of J. R. Bosman, deceased, late of Pitt County, North Carolina, this is to notify all persons having claims against the estate of said deceased to exhibit them to the undersigned at Farmville, N. C., on or before December 15th, 1934, or this notice will be pleaded in bar of their recovery. All persons indebted to said estate will please make immediate payment.

This the 12th day of December, 1933. D. S. MORRILL, Administrator of J. R. Bosman's Estate. John Hill Paylor, Attorney.

North Carolina farmers who grow hogs for the market should sign one of the new Corn Hog adjustment contracts, suggests W. W. Shay. He urges such action where the growers have also signed one of the tobacco or cotton contracts.

Red radishes will be planted on 184 acres by farmers of Burke county this winter as a new source of farm income.

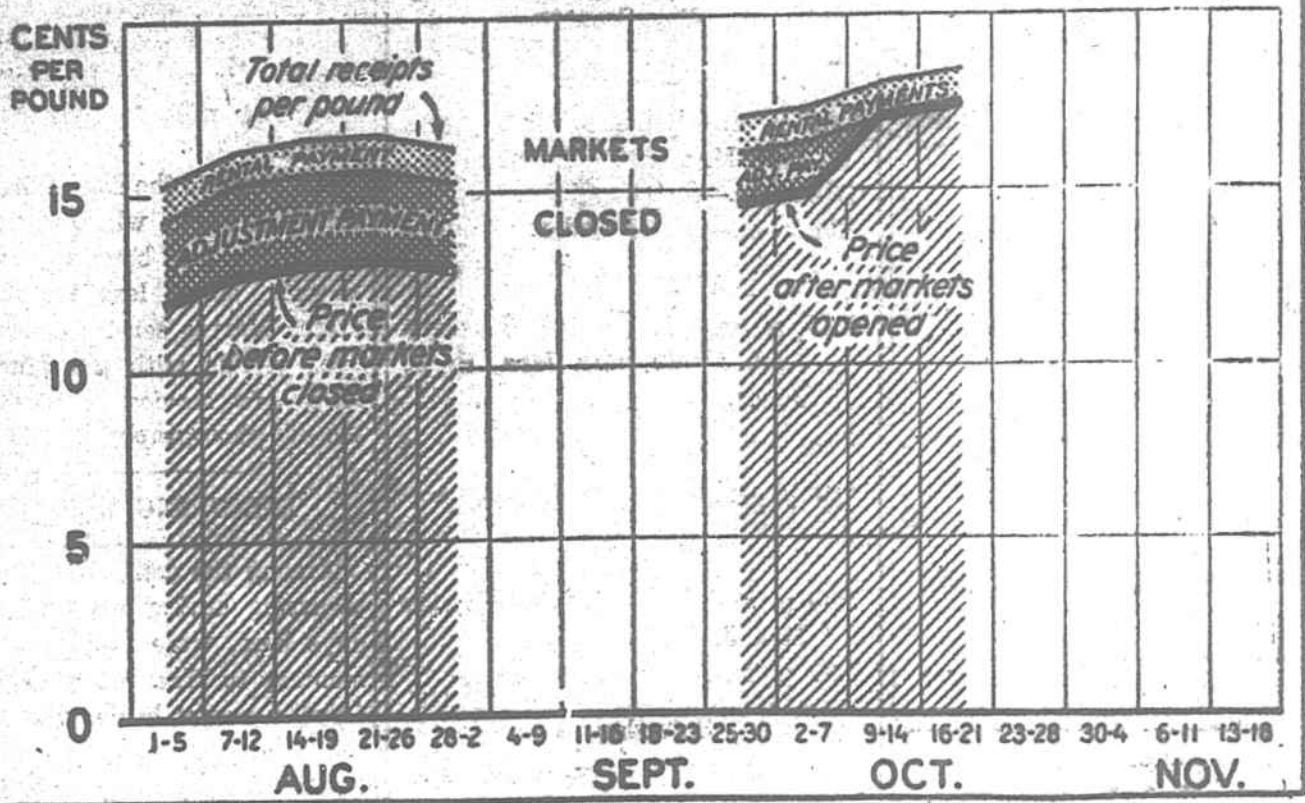
Practically every tobacco grower in Hertford County, who signed the re-adjustment agreement last fall, is signing the contract now being offered, and many who did not sign the agreement will sign the contract, says the farm agent.

Martin County sweet potato growers have 65,000 bushels of cured sweets in storage for sale this winter and next spring.

W. W. Warden, Laurel Springs, Alleghany County, reports a gross income of \$9.14 per cow from a flock of 18 ewes during the past year. The 18 animals produced a lamb crop of 161 percent and the wool clip was 6 pounds per head.

The Jersey Cattle Club of Person County has purchased a pure bred bull calf from the Händlegh Farms of Lockport, New York.

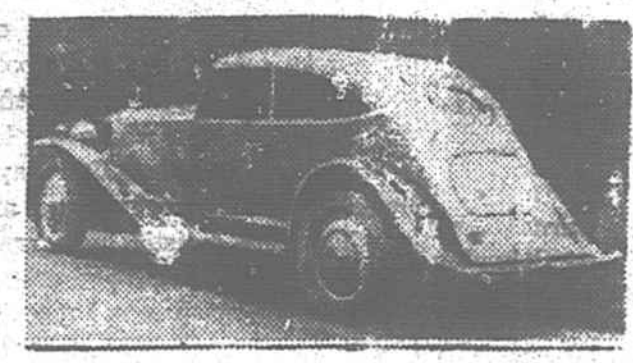
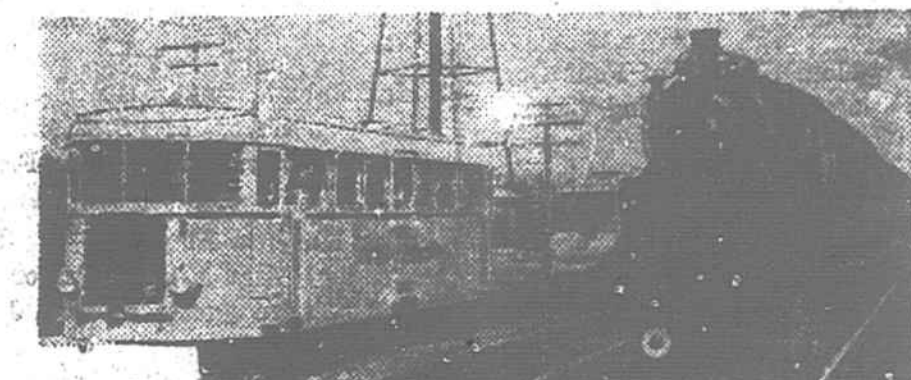
Flue-Cured Tobacco: Average Price of 22 Representative Grades for Markets by weeks and rental and adjustment payments, 1933



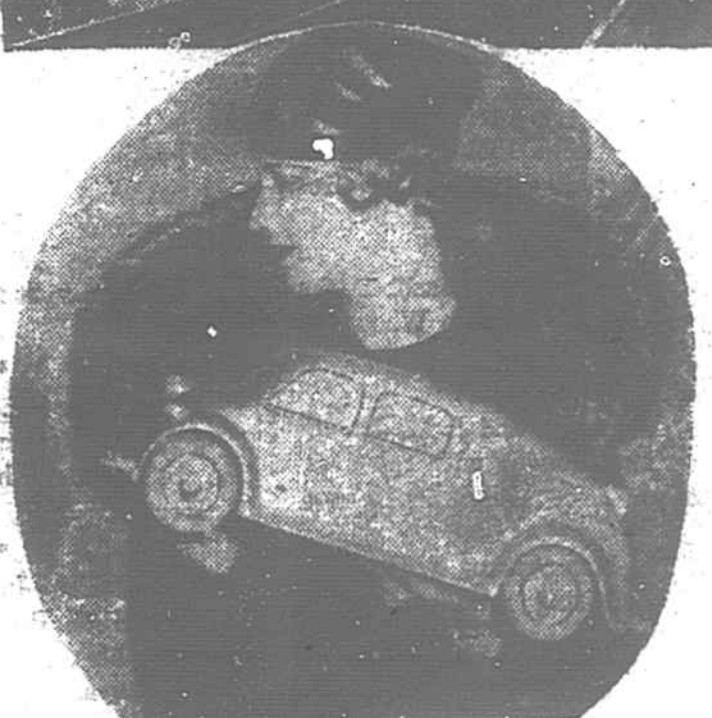
UNSATISFACTORY prices caused the closing of flue-cured markets. After the markets reopened, prices on all-grades basis rose materially. In addition to the increased prices, all growers who participate in the program to reduce production in 1934 will receive rental payments and those who sold their tobacco before October 7 will receive adjustment payments.

AUTOS, TRAINS, EVEN HATS GO STREAMLINE

(Right)—While not completely streamlined, in accord with the more advanced engineering, the new Austro-Daimler car, recently tried out on the Long Island Railroad, made speeds of around 80 miles an hour. Travelling almost twice as fast as the conventional type trains, this car has a much lower operation-cost per passenger.



This car illustrates one of the first definite breaks with the old horse-and-carriage tradition in design.



Professional model showing the new winter, 1933 streamlined hat, along with the short need car with sweeping tail which inspired the hat designer. The hat is said not to blow off in a wind of 60 miles an hour.

Design for a sedan represents complete streamlined revolution. The chassis is re-engineered from the ground up. Notice from window spacing that passengers no longer sit over the rear wheels—important improvement in riding comfort. The blunt nose is another advance in streamline design.

Engineers are now declaring that every train and automobile of any design familiar to the public is obsolete. Aviation, which has been unhindered by designing conventions because it was developed only in the last 25 years, has benefitted most rapidly.

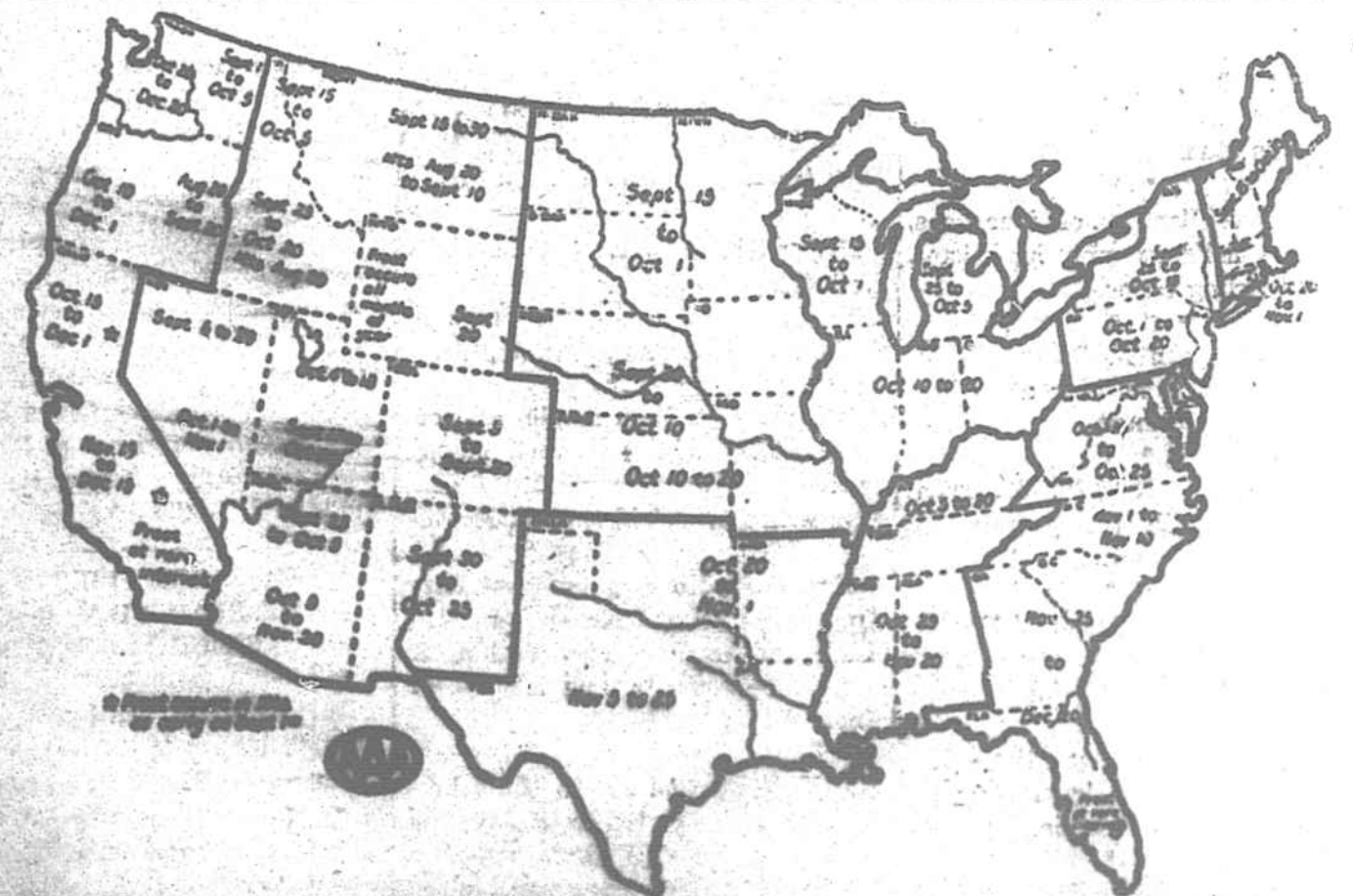
But trains and automobiles also are now beginning to show the influence of the laboratory. Experts now freely predict that the automobile especially is due for swift, radical change and development.

Streamlining of autos, already begun, will continue until the long blunt noses will disappear; the symbol of the new car's power and speed; the front will be broad and the whole car will taper to the rear somewhat like an inverted cone. Such a shape travels through

the air with least resistance. A complete weight redistribution in the car will then be possible, re-

say experts—in a riding position previously unknown. Not only that in the new car model held by the girl that back seat passengers sit in front of the rear wheels—not on top of them! Such re-bundling of the automobile produces a completely new riding experience.

U. S. Map Shows Freezing Weather Overdue



First freezing weather is now overdue in a majority of states, and motorists who have neglected to prepare for it should act at once, the American Automobile Association gives warning in an announcement sent to car owners. The official statement is based upon H. W. Carter Bureau reports which show that only three states of the Union are safe from severe drops in temperatures within the next ten days. "Immediate preparation will mean insurance against heavy ice-clogging conditions and against frozen motors, spirit of the 'buy now' movement. Approximately 330,000,000 cars and trucks are in use in the United States. The owners of these cars and trucks should be warned to take immediate steps to protect their cars and trucks from the effects of freezing weather. The AAA advises that motorists should take the following steps: 1. Check the condition of the car's battery. 2. Check the condition of the car's oil. 3. Check the condition of the car's tires. 4. Check the condition of the car's brakes. 5. Check the condition of the car's lights. 6. Check the condition of the car's horn. 7. Check the condition of the car's windshield wipers. 8. Check the condition of the car's defroster. 9. Check the condition of the car's heater. 10. Check the condition of the car's antifreeze. 11. Check the condition of the car's radiator. 12. Check the condition of the car's water pump. 13. Check the condition of the car's fan belt. 14. Check the condition of the car's timing belt. 15. Check the condition of the car's spark plugs. 16. Check the condition of the car's distributor. 17. Check the condition of the car's ignition coil. 18. Check the condition of the car's battery cables. 19. Check the condition of the car's ground connections. 20. Check the condition of the car's air filter. 21. Check the condition of the car's oil filter. 22. Check the condition of the car's water filter. 23. Check the condition of the car's fuel filter. 24. Check the condition of the car's air intake filter. 25. Check the condition of the car's exhaust system. 26. Check the condition of the car's muffler. 27. Check the condition of the car's catalytic converter. 28. Check the condition of the car's oxygen sensor. 29. Check the condition of the car's mass air flow sensor. 30. Check the condition of the car's throttle position sensor. 31. Check the condition of the car's crankshaft position sensor. 32. Check the condition of the car's camshaft position sensor. 33. Check the condition of the car's knock sensor. 34. Check the condition of the car's variable valve timing sensor. 35. Check the condition of the car's transmission oil. 36. Check the condition of the car's transmission filter. 37. Check the condition of the car's transmission fluid. 38. Check the condition of the car's transmission pan. 39. Check the condition of the car's transmission housing. 40. Check the condition of the car's transmission shaft. 41. Check the condition of the car's transmission gears. 42. Check the condition of the car's transmission bearings. 43. Check the condition of the car's transmission seals. 44. Check the condition of the car's transmission gaskets. 45. Check the condition of the car's transmission bolts. 46. Check the condition of the car's transmission nuts. 47. Check the condition of the car's transmission washers. 48. Check the condition of the car's transmission spacers. 49. Check the condition of the car's transmission shims. 50. Check the condition of the car's transmission pins. 51. Check the condition of the car's transmission clips. 52. Check the condition of the car's transmission cotter pins. 53. Check the condition of the car's transmission lock washers. 54. Check the condition of the car's transmission conical washers. 55. Check the condition of the car's transmission lock nuts. 56. Check the condition of the car's transmission lock washers. 57. Check the condition of the car's transmission lock nuts. 58. Check the condition of the car's transmission lock washers. 59. Check the condition of the car's transmission lock nuts. 60. Check the condition of the car's transmission lock washers."/>