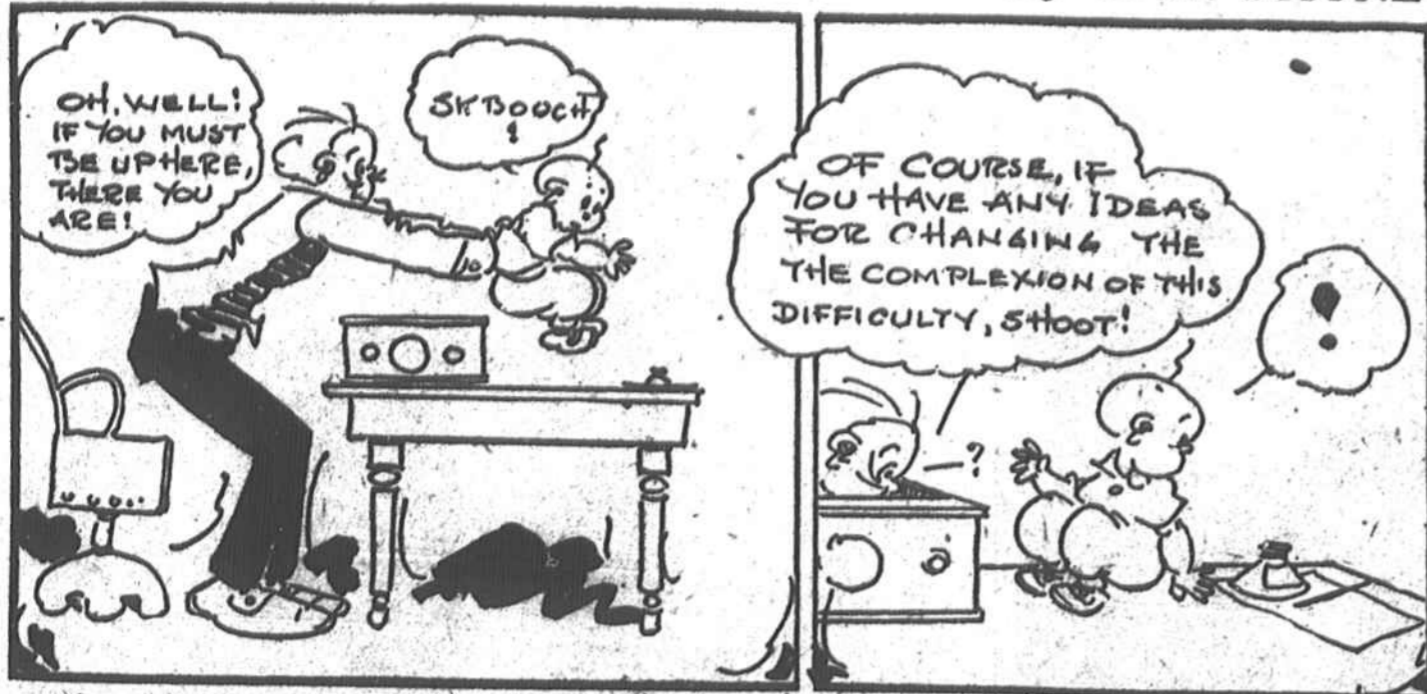


S'MATTER POP

By C. M. PAYNE



(© The Bell Syndicate, Inc.)

**SUCH IS LIFE**  
By Charles Sughtroo  
*The Best Part*



Events in the Lives of Little Men



His first Christmas purchase

VEGETABLES INDICATED

A depressed looking chap walked into a restaurant and took a seat near the door. A waiter bustled up: "Walter—What will you have, sir? Some cold shoulder?"  
Depressed Chap—No, thanks, I had that this morning.  
Walter—Well, then, tongue, sir?  
Depressed Chap—No, thanks, I had that tonight.—Chelsea Record.

An Influence

"Do you know anything about the count's family tree?"  
"No," answered Miss Cayenne. "Judging from his jewelry and court decorations, it might have been a Christmas tree."

Faithful Student

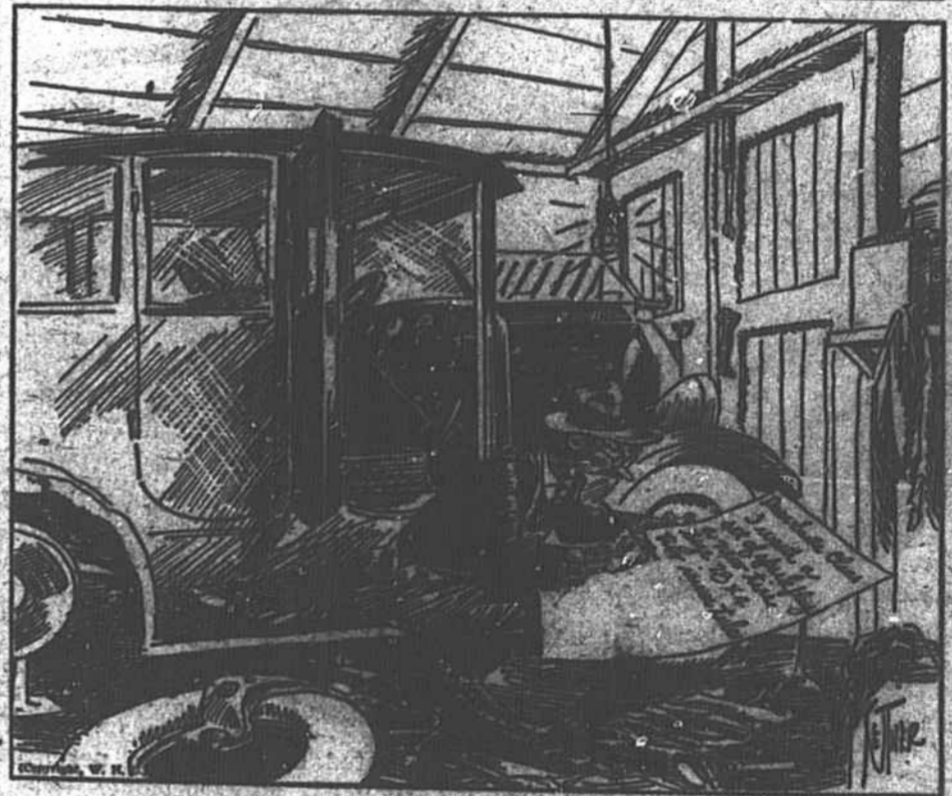
"Do you study the bulletins of the Department of Agriculture?"  
"Attentively," answered Farmer Corntossel. "I read the arguments on both sides; how to make crops more abundant in order to have something to sell and how to limit them so as to have nothing to sell."

ODD THINGS AND NEW—By Lane Bode



WNU Service.

Along the Concrete



JUST OUT



"Smith is down and out."  
"Oh, yes. He told me the other day he was paying cash for every thing."

DINGLE, DING



Worm—Hey! Mr. Woodpecker, ring the bell, you're punching my door full of holes.

**WRIGLEY'S**  
**SPEARMINT**  
GUM  
The Flavor Lasts