

Look At Your Label — If Your
Subscription Has Expired Send
In YOUR Renewal at Once!

The Farmville Enterprise

Patronize Our Advertisers, For
They Are Constantly Inviting
You To Trade With Them.

VOL. TWENTY-SIX FARMVILLE, PITT COUNTY, NORTH CAROLINA, FRIDAY, MAY 15, 1936 NUMBER TWO

Methodists Hold Splendid District Meet During Week

Prominent Preachers, Women and Laymen On Program; Conference Accepts Invitation of Warrenton for Next Meeting

Delegates and visitors, estimated at five hundred, representing thirty-two Methodist churches in this section of the State, assembled here Tuesday and Wednesday, for the annual Rocky Mount District Conference.

Preacher's Session

The conference convened in the handsome Methodist church here, of which Rev. J. C. Wooten is pastor, on Tuesday morning, with Presiding Elder J. M. Culbreth, of Rocky Mount, presiding and a cordial welcome extended on behalf of the local congregation by John T. Thorne, a prominent layman. A worship period preceded the formal organization and the calling of the roll by the secretary, Rev. C. W. Goldston, pastor of the Clark street Methodist church, Rocky Mount.

The first session, given over to the preachers, was featured with discussions under the subject of "What's News?" when reports of outstanding activities in the various churches were given by the leaders. Appointment of committees followed.

Rev. T. M. Grant presented the superannuated preacher as "The Forgotten Man" at this time and Rev. H. I. Glass discussed Conference Brotherhood.

Woman's Session

Mrs. A. M. Gates, of Durham, Conference president of the Woman's Missionary Society, made the principal address at the Woman's session in the afternoon, with some of the "Perils To The Modern Home," being listed by Rev. M. T. Plyer, as the disintegration of family life, transfer of responsibility of moral and religious teaching to the church and school, and the demand for personal liberty in defiance of the church and social ideals of Jesus. To these was added, by Rev. J. J. Boone, the economic peril peculiar to textile districts and cities, where home life is hampered by crowded conditions.

Rev. Mr. Boone quoted statistics to prove that a vast majority of divorces occur among residents of apartments or in other crowded living quarters. Rev. A. S. Barnes, superintendent of the Methodist orphanage, Raleigh, also spoke at this time.

Youth Program

On Wednesday evening a youth's session was held with an address by the Conference secretary, Rev. C. W. Goldston to open the program, followed by musical selections, rendered by a group of children from the Methodist orphanage, Raleigh.

Cartoons, revealing the evils of alcohol, were exhibited and commented upon by Rev. E. C. Crawford, Dr. Curtis, of Greensboro College, and Dr. Amick, of Louisville College, spoke of these institutions in the light of their influence on youth.

Rev. R. L. Jerome discussed "Traits of Youth," and Rev. R. W. Bradshaw, executive secretary of the North Carolina Conference of the Board of Education, addressed the session on the need of trained leaders for the guidance of youth.

Mrs. Earl W. Brian, who has charge of the Young People's work in the Conference, outlined the program of activity now underway in her field, calling attention to the phases upon which efforts are being concentrated.

Laymen Take Part

The laymen's session Wednesday morning was opened with a meditation by Rev. L. V. Harris, of Conway, on "The Challenge of Christianity."

Mr. Fisher, of Roanoke Rapids, spoke on "Perils To The Integrity of The Church," and Rev. W. L. Clegg conducted an open forum on the Church's Moral Code.

W. L. Knight, a district lay leader, introduced the subject and spoke at length, relative to the election of delegates to the annual Conference, and striking a ready spark which ignited, as is the rule in these conferences when the subject of alcoholism is brought up, J. C. Hardy protested against the election of delegates to the annual Conference who sanction the sale or use of alcohol.

This discussion brought many delegates to their feet to endorse the law as interpreted by Mr. Knight which would disqualify such candidates, resulting in the chair sustaining the complaint of Mr. Hardy.

Among the highlights of the laymen's session was the address of Dr. W. P. Few, president of Duke University, who spoke on the subject of "Some Of The Traits of Jesus Which Appeal To Laymen." Col. J. F. Bruton, another prominent layman, in the presentation of his subject, "The Solution The Church's Problems and Perils," emphasized unending contact with God through the medium of prayer.

Warrenton's invitation to the Conference to hold the next annual meeting with that congregation as hosts, was accepted.

The election of delegates and alternates to the annual Conference, to be held in New Bern in November, resulted as follows: J. A. Staton, Mrs. Ida Barnes, Mrs. L. L. Drawn, John T. Thorne, Rev. S. J. Stallings, E. S. Patterson, J. C. Hardy, Dr. J. L. Lister, J. G. Madrey, R. L. Towle, J. C. Braswell, E. L. Lewis, C. S. Bunn, J. P. Creech, W. N. Body, W. L. Knight, J. F. Bruton, W. G. Shaw, Miss Kate Tripp, J. W. Moore, H. H. Grant, and I. G. Shaw. Alternates: C. W. Lassiter, Mrs. L. A. Watts, Miss Willie Pritchard and Mrs. D. L. Boone.

Delightful luncheons were served during the Conference by members of the local Woman's Missionary Society, and the vested choir rendered the music for the sessions.

Trade Treaty Agreed Upon By Countries

U. S. And France To Sign Reciprocal Pact; Leaf Tobacco To Be Affected

Washington, May 14.—The state department announced today that an agreement with France on a reciprocal trade pact is to be signed in Washington late this afternoon.

Although no details of the agreement were available immediately, great importance was attached in both countries to the commercial accord which is intended to lower certain restrictions now applied by the French against the American products.

France is America's fifth best customer and the new agreement is regarded by state department officials as second only to that recently entered with Canada. The pact will represent the thirteenth to be negotiated by the state department under this government's reciprocal trade program.

Negotiations with France have been proceeding more than a year. It was understood agreement on the last remaining technicalities was reached only last night.

The new pact will apply not only to France, but to its colonies, dependencies and protectorates as well, with the exception of Morocco.

In the main, the United States exports to France such products as unmanufactured cotton, petroleum products, refined copper, leaf tobacco, wheat, land and apples and pears.

The chief imports from France, are luxury articles.

4-H Clubs To Promote Rural Electrification

Agricultural leaders are counting on 4-H club boys and girls to give the rural electrification program a healthy impetus in North Carolina.

Club members may start projects by which they can promote the cause of rural electrification, with prizes to be awarded those who do the best work, said L. R. Harrill, 4-H club leader at State College.

In the projects the boys and girls will draw plans of their homes and other farm buildings, designing the equipment that should be used to electrify the farmsteads satisfactorily and economically.

Where power lines are within a reasonable distance, they will prepare maps showing the lines in relation to their homes together with the location of other farms and buildings between their homes and the power lines.

Junior Order To Hold Home-Coming Celebration

Senator Reynolds to Deliver Address; Saturday, May 23, Date Set

Members of the Junior Order from this area are expecting to join those of other sections of North Carolina in the observance of the first annual home-coming celebration to be held at the Junior Order home, Lexington, N. C., Saturday, May 23. An elaborate program, featuring an address by U. S. Senator Robert R. Reynolds, has been worked out and hundreds of Juniors with their families are expected to attend.

The home-coming celebration was approved at the last session of the State council, held in Wilmington, as a means of bringing the membership of the order together once a year at the orphanage for an all-day visit.

The program, tentatively arranged and announced by Monroe Adams, Statesville, state councilor, provides for a session in the Vance auditorium at 11 a. m. at which time Senator Reynolds will speak; a concert by the little symphony orchestra of the home in the afternoon; a baseball game between the Lexington orphanage and the Oxford Masonic orphanage; and a picnic dinner.

Notices have been sent to all subordinate councils by the state councilor concerning the celebration and urging large attendance. According to word received here, many councils are making plans to charter buses for the transportation of large delegations while motorcades are being considered by others.

The complete program will be completed within a short time, state officials of the order have announced.

PAYLOR PRESENTED WITH MILITARY SERVICE CROSS

John Hill Paylor, and sons, Jack and Bob, spent May 10th in Laurinburg with Mr. Paylor's parents, and during the afternoon Mr. John Hill Paylor delivered the Memorial Address at Hillside cemetery, Laurinburg. Following the exercises "Scotland Chapter No. 905 United Daughters of the Confederacy presented a Cross of Military Service to Mr. Paylor, who served during the World War, and who is a lineal descendant of John E. Hill, who served as a Bugler in Co. A, 59th Cavalry Regiment in the War Between the States.

Announces Payments In Soil-Building Program

Soil-building practices for which North Carolina farmers will be paid under the 1936 soil-improvement program have been announced by Dean I. O. Schaub, of State College.

The soil-building payment is in addition to the soil-conserving payment made to farmers for shifting part of their soil-depleting base acreage into soil-conserving crops.

The various practices, with their rates of payment, are as follows: For seeding any of the following crops between January 1 and October 31, 1936, with or without a nurse crop, either alone or in connection with perennial grasses, provided that such seeding is at a normal rate per acre for the locality, payments per acre will be:

- (1)—Alfalfa, sericea, or kudzu, \$2.
- (2)—Red or mammoth clover, \$1.50.
- (3)—Alsike, sweet, white, bur, or crimson clover; Austrian winterpeas, vetch, annual lespedeza, or crotalaria, \$1.00.
- (4)—Legume mixtures, containing by weight more than 50 percent of the legumes in (1) or (2), \$1.50.
- (5)—Legume mixtures containing by weight more than 50 percent of the legumes in (3), \$1.00.

For plowing or disking under as green manure any of the following crops, between the dates specified, and provided that the crops will have attained at least two months' growth, payments per acre will be:

- Soybeans, velvet beans, cowpeas, sweet clover, lespedeza, or crotalaria, plowed or disked under between July 1 and October 31, 1936, \$1.50.
- Crimson clover, Austrian winter peas, or vetch plowed or disked under between March 1 and June 1, 1936, \$1.50.
- Rye, barley, wheat, Italian ryegrass, winter oats, or mixtures of these, turned under between March 1 and June 1, \$1.
- Sudan grass, millet, or sorghum turned under between July 1 and October 31, 1936, \$1.

However, a grower will not be entitled to two payments, one for seeding the crops listed above and another for plowing them under, the dean pointed out. If he plows them under, the plow-under payment will be \$1.00 less.

For planting fescue trees on crop land or non-crop pasture land between January 1 and October 31, 1936, the rate of payment is \$5 per acre. For applying between January 1 and October 31, 1936, ground limestone or its equivalent on land used this year for any soil conserving crop; or land on which any of the soil-building practices listed above, except planting forest trees, are carried out; or land on which small grain is seeded between September 1 and October 31, 1936, in preparation for carrying out after October 31 one of the soil-building practices listed above, rates of payment are as follows:

- Applications of not less than 1,000 pounds to the acre, \$1; of not less than 2,000 pounds to the acre, \$2; of not less than 3,000 pounds, \$3; and of not less than 4,000 pounds, \$4.
- One hundred pounds of ground oyster shell, 70 pounds of hydrated lime, or 50 pounds of burned lime will be considered the equivalent of 100 pounds of ground limestone.
- For applying 16 percent superphosphate under the same conditions as laid down for ground limestone, the payment per acre will be 50 cents a hundred pounds up to 500 pounds.
- Slightly higher payments will be made when 50 percent muriate of potash is added to the superphosphate.
- For erosion control work done between January 1 and October 31, 1936, on crop land which county committees find in need of terracing or sub-solling, payments will be:
- Terracing with a sufficient amount of properly constructed terraces to give adequate protection against erosion, 40 cents per 100 feet of such terraces, but not to exceed \$2 an acre.
- Sub-solling to a depth of at least 18 inches with furrows sufficiently close together to completely break the sub-soil \$2 an acre.
- Dean Schaub also pointed out that the total amount of the soil-building payment on any farm cannot exceed a number of dollars greater than the number of acres in soil-conserving crops, except that no farm will be limited to less than \$1.

State Leads Crop Loans

North Carolina Farmers Top In Getting Government Loans

This spring, for the third consecutive season, the production credit association in the South Atlantic States are leading the country in number of loans, and the North Carolina figures is the highest of any state in the country, according to a release from the Farm Credit Administration Monday.

Some 10,777 North Carolina farmers borrowed \$2,829,346 from the production credit association in the State from the first of the year up to April 1. Total loans in the third district, which includes the Carolinas, Georgia, and Florida, amounted to \$8,954,000, compared to the first quarter of 1935.

The production credit association at Greenville made the largest amount of loans—\$219,490—an increase of 23 per cent over the first quarter of 1935; and the Raleigh association was second in amount with \$216,160, up 12 per cent. The Statesville production credit association had the largest number of loans in the State—755—and also a substantial increase in business over last year.

The total number of loans in the third district was 29,793 almost double that of any other district, and the amount was second being exceeded slightly by the volume in the Berkeley district which includes California, Arizona, Utah and Nevada.

The New Orleans district, covering Louisiana, Mississippi and Alabama, was second in number with 16,086 loans and third in amounts—\$8,746,000.

STORES TO CLOSE ON WEDNESDAY AFTERNOONS

Merchants, and heads of other varied branches of business here, have agreed to close their doors on Wednesday afternoons, from June 1st to August 15th, for which action they are to be commended, as their half holiday will give their employees the benefit of a mid week outing during the extreme hot weather.

DONATIONS OF MAGAZINES TO FARMVILLE LIBRARY

Miss Tabitha DeVosconti, librarian of the Farmville Library, announces the contribution of a large number of magazines to the library by the Young Women's Sunday School class of the Methodist Church, for circulation.

Mayor Lewis Issues Proclamation For Poppy Day

Citizens Urged To Observe Day by Wearing Memorial Poppies

Saturday, May 23, was designated as Poppy Day in a proclamation issued today by Mayor John B. Lewis. The proclamation urged all citizens to observe the day by wearing memorial poppies in honor of the World War dead. It stated:

"When the United States was plunged into the World War in 1917, the Town of Farmville responded to the nation's call in a spirit of exalted patriotism. The citizens of the town offered their efforts and their means in the nation's defense, serving and sacrificing in the national cause. The Town of Farmville holds in proud memory its part in the great national effort which brought victorious peace in 1918.

"Many of the town's young men were called into the armed services and some of them were called upon to sacrifice their lives in that service, dying with thousands of other brave young Americans upon the battle fields of France. There, over their graves, a little flower sprang up and bloomed, nature's tribute to the heroic dead. It was the poppy, and their comrades ask Americans to wear a poppy in their memory, one day of each year. On Saturday, May 23, The American Legion and the American Legion Auxiliary will distribute these memorial poppies in our town.

"Therefore, I, Mayor of the Town of Farmville, do hereby proclaim Saturday, May 23, to be Poppy Day in the Town of Farmville, and I urge all citizens observe the day by wearing the memorial poppy in order that the inspiring memory of those who made the highest patriotic sacrifice during the war may be recalled to every mind.

"JOHN B. LEWIS, Mayor."

Gives Rules Regarding Work Sheets for Farms

Provisions of the soil-improvement program regarding land to be covered by work sheets are as follows, said Dean I. O. Schaub, of State College.

Where one or more farms in the same county under the same ownership are operated in 1936 as a single farming unit by the same operator, they will be covered by one work sheet.

If two or more farms are operated by the same person, but are under different ownership, each separately owned farm will be covered by a separate work sheet.

Or if several farms are under the same ownership, but are operated by different persons as separate farming units, each separately operated unit will be covered by a separate work sheet.

Where a tenant rents part of his land on shares and a part for cash, separate work sheets shall be used to cover each part unless all the cash-rented land is used for hay, meadow, pasture, or the like.

However, if the cash-rented land is used entirely for hay, meadow, pasture, or the like, and if it is owned by the same person from whom the land on shares is rented, then both the cash-rented and the share-rented land may be covered by the same work sheet.

A farm consisting of adjacent tracts in two or more counties, but under the same ownership and operated in 1936 as a single farming unit by the same operator, shall be regarded as located in the county in which the principal dwelling on such farm is located.

If there is no dwelling on the farm, it shall be considered as located in the county in which the major portion of the farm is located.

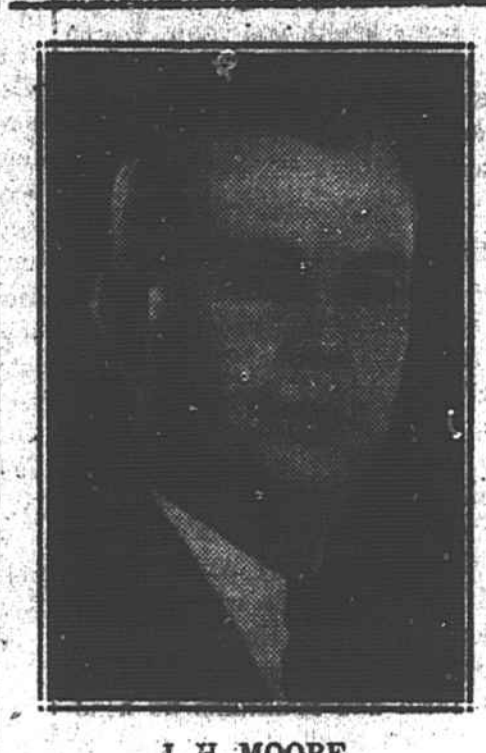
Will Broadcast Facts About Farm Program

By listening to the Carolina Farm Features program daily, farmers may learn the latest developments of the new soil conservation program.

State and federal agricultural authorities are working constantly on the new program to make it of greatest benefit to the largest possible number of growers. Many changes have been made since the program was first drafted, and others will be made as time passes. As alterations are made which will affect the North Carolina farmer, they will be broadcast so that growers may be kept constantly in touch with what is going on.

Nitrate of soda applied to cotton just after chopping and before the following cultivation should be doubly valuable this season due to the late planting.

Program Of Finals Which Begin Friday; Dr. W. D. McInnis to Preach Sunday



J. H. MOORE
Superintendent Farmville High School

Anthony Eden Avers League Is Necessary

British Secretary Addresses House of Commons; Says Structure Suffered Blow

London, May 14.—Anthony Eden, British foreign secretary, declared to the House of Commons today "the League of Nations must go on."

The minister, upon whom has developed British relationship to the Italo-Ethiopian struggle said his government was beginning immediately a study of the problem raised by the Italian war in East Africa.

For this purpose, he stated, the government is entering into consultations with the dominion.

"It is clear that the League of Nations must go on" said Eden. "In the modern world it is absolutely indispensable for the organization of international affairs."

"No doubt a blow has been struck at the structure of the league and the conception of collective security. We must face these facts frankly."

The Foreign Secretary sidestepped attempts to have him clarify what policy Great Britain would pursue at Monday's meeting of the league council.

Precinct Meeting Held On Saturday

Executive Committee And County Delegates Elected At This Time

The Farmville Democratic precinct meeting was held in the municipal hall, Saturday, May 9th, at 2 o'clock p. m., with Dr. Paul E. Jones, president, and John Hill Paylor, acting as clerk and secretary.

The election of sixteen delegates to attend the County Convention to be held in Greenville on Saturday, May 16th, at eleven o'clock, resulted as follows:

John T. Thorne, Dr. Paul E. Jones, G. W. Davis, John Hill Paylor, B. M. Lewis, R. E. Belcher, R. A. Fields, H. S. Askew, J. Y. Monk, B. O. Turnage, John W. Holmes, Mrs. J. M. Hobgood, G. M. Holden, J. W. Joyner, W. J. Rasberry, J. I. Morgan, Jr.

Alternates: Mrs. J. L. Shackelford, J. B. Joyner, B. S. Sheppard, A. F. Joyner, B. J. Skinner, S. T. Lewis, John B. Lewis, D. R. Morgan, J. B. Moore, L. W. Godwin, L. W. Humbles, F. M. Davis, Jr., Mrs. Sallie K. Horton, Arch J. Flanagan, C. A. Tyson, Dr. W. M. Willis.

The executive committee of the precinct as elected at this time is composed of Dr. Paul E. Jones, chairman; Mrs. J. L. Shackelford, J. W. Holmes, John B. Lewis and Geo. W. Davis, vice chairman.

NEWTON-CASE

The following invitations have been received by friends this week:

"Mrs. George Case requests the honor of your presence at the marriage of her daughter, Vivian Dale, to Reverend Piny Foster Newton, on Tuesday, the twenty-sixth of May, at ten-thirty o'clock in the morning, Methodist Church, Farmville, North Carolina."

Hon. J. M. Broughton Will Deliver Address At Graduation Exercises; Public Invited To Attend All Events

Ushering in the finals of the Farmville school will be the much anticipated primary operetta, "Goldilocks," on Friday evening, May 15, at eight o'clock, which is to be presented by more than a hundred primary pupils.

The cast and scenes are as follows: Goldilocks, Anne Oglesby; Her Mother, Margaret Tyson; Her Father, Jimmie Parker; Mother Bear, Jean Beckman; Father Bear, Harry Davis; Baby Bear, Bobby Smith; Pan, William; Neighbors.

Dances

Playmates, Wood Nymphs, Light Bearers, Daisies, Violets, Bluebells, Butterflies, Bees, Cubs.

Act I—Garden of Goldilocks Home. Act II—The Woods.

Act III—Living Room of Three Bears Home.

Epilogue

Grand March.

Directing the operetta are: Miss Annie Jenkins, Miss Olive G. Gilbert, Miss Vivian Case, Mrs. W. B. Carraway, Miss Margaret Lewis and Miss Elizabeth Norman, assisted by Miss Mary K. Jerome, Mrs. Haywood Smith and Mrs. J. E. Russell.

The Bacchante sermon will be delivered Sunday morning, May 17, at eleven o'clock, by Rev. W. D. McInnis, pastor of the Washington Presbyterian church, a solo will be rendered by Miss Mary K. Jerome, and anthems will be sung by a chorus composed of local singers accompanied by Mrs. Haywood Smith.

Mrs. Haywood Smith will present her piano pupils in a recital Tuesday evening, May 20, at eight o'clock.

Vocal, piano, expression and glee club pupils of Miss Mary K. Jerome appeared in a recent concert and the Junior-Senior banquet was also among the earlier events of the finals.

On Thursday evening, May 21, at eight o'clock, the senior class will present a play, "Beads On A String," which with the following case promises to be a splendid entertainment. The cast of characters are as follows:

Bennie Davis, Robert Windham; J. H. Davis, Calvin Briley; Benjamin Davis, Esq., Bennie Skinner; Harold Beem, Carroll Oglesby; Ad Dinkler, James Moore; Mrs. J. H. Davis, Virginia Atkinson; Molly Mallerton, Eva Mae Hardy; Jennette Blue, Gene Horton; Cleopatra Cleomorgins Johnson, Sula Carr. Scene: The living room in the Davis Home. Furniture furnished by the Farmville Furniture Company. Miss Mattie Lee Eagles is directing the play.

The graduation exercises are scheduled for Friday evening, the 22nd, at eight o'clock, when the following program will be presented:

"America," by Assembly, Mrs. Haywood Smith at piano; Invocation, Rev. C. B. Mashburn; Salutatorian, Calvin Briley; Valedictorian, Maude Emma Hinson; Introduction of Speaker, Mayor John B. Lewis; Address, Hon. J. M. Broughton, President, N. C. Bar Association, Raleigh; Presentation of High School Diplomas, J. W. Holmes, Chairman of School Board; Presentation of P. T. A. Prizes, Mrs. A. Q. Roebuck, President Parent-Teacher Association; Presentation of Seventh Grade Certificates, Dr. Paul E. Jones, Secretary School Board; Presentation of Mathematical Medal, given by Mrs. J. Y. Monk, J. I. Morgan, Member School Board; Presentation of Library Club Medal, Miss Tabitha DeVosconti, President; Reading of Honor Roll, J. H. Moore, Superintendent Farmville School; Benediction, Rev. H. M. Wilsoh.

Candidates for diplomas are: William Calvin Briley, Lester Morris Carraway, Milton L. Eason, Jr., James Richard Jones, Russell Joyner, Carol Willis Modlin, James Woodrow Moore, Elbert Moye, Carroll Dean Oglesby, Bennie Skinner, Robert Edgar Windham, Robert Bruce Lewis, Rosa Marie Allen, Alice Virginia Atkinson, Annie Lou Avery, Thelma Elizabeth Garries, Sula Barrow Carr, Iona Elizabeth Green, Eva Mae Hardy, Maude Emma Hinson, Gene Horton, Anna Winifred Jones, Annie Laurie Joyner, Meta King Moore, Nellie Eugenia Nichols, Mattie Louise Parker, Virginia Spell, Elvira Smith Tyson, Ruby Head.

Marshals for the evening will be: Juniors—Ras Jones, Helen Willis, and Edna Lewis; Sophomores—Frances B. Smith, Frances Newton, and Lucille Cutchin; Freshmen—Blanche Bryan, Robert Pierce, and Rachel Barrett.

The Farmville school has had a most successful year under the supervision of J. H. Moore, much progress in the various branches of learning and activities being observed by interested patrons of the community.

Rev. Mr. Newton is pastor of the Methodist Church in Kony.