

FARMVILLE COUNTRY CLUB MARCHES IN THE FIRST RANKS OF PARADE OF PROGRESS HERE

First Event to Be Held in Spacious New Club House August 25; Formal Opening at Early Date; To Serve as One of Farmville's Social Centers for Dinners, Parties and Luncheons, While Fine Golf Links Will Attract Hundreds of Golfers.

The MARCH OF PROGRESS in this sports-loving and social-minded community has been greatly evidenced in the construction of the spacious new club house on the Country Club grounds, which has just been finished.

The first event, marking its completion, will be the annual stockholders meeting and dinner, to be held Friday evening, August 25, at 6:30 o'clock, at which President George W. Davis will preside as toastmaster and reports will be heard from the various officers and committees, including that of the nominating committee, which will recommend members for offices in the annual election.

The present officers are: George W. Davis, President; John B. Lewis, Vice-President; W. A. Pollard, Jr., Secretary-Treasurer; Ed Nash Warren, assistant Secretary-Treasurer.

The board of directors, who with the officers have worked faithfully to bring this undreamed of addition to Farmville's recreational life, are B. O. Taylor, chairman; Dr. Paul E. Jones, Cecil Lilly, W. S. Royster and L. T. Pierce. Wyatt Holmes, of affable manner, popular golf enthusiast and one of the best players in Eastern North Carolina, has been pro since organization of the club.



COMING IN ON THE NINTH GREEN
Players left to right: C. A. Lilly, W. S. Royster, Lath Morris, B. O. Taylor and their caddies.



TEEING OFF—B. O. Taylor, Country Club's southpaw, chairman of the Board of Directors and golf enthusiast begins his game.



1—Methodist Episcopal Church, corner Church and Walnut Sts. 2—Christian Disciples Church, corner Main and Church Sts. 3—First Baptist Church, corner of Wilson and Green Streets. 4—Primitive Baptist Church, corner of Wilson and May Streets. 5—St. Elizabeth Catholic Church, corner Contentnea and Walnut Sts. 6—Emanuel Episcopal Church, Walnut St., North of Church. 7—First Presbyterian Church, corner of Walnut and Pine Sts.



GRANDSTAND GOLFERS ENJOY SPACIOUS VERANDA OF NEW COUNTRY CLUB BUILDING

Feeling the need of more adequate quarters a campaign was put on some months ago and \$4,000 was subscribed by members and other Farmville citizens to enable the Club to obtain a WPA grant of \$9,000 for the construction of the new club house, work on which has progressed rapidly through the summer. \$4,000 has also been spent in golf course improvements.

The club house has a center lodge or lounge 32 x 48, with spacious locker rooms, a kitchen and ladies powder room, is finished in rustic style with cypress paneling; has a large fireplace in either end of the lounge, and is well lighted and ventilated. The floors are hardwood. A spacious veranda, facing the links, will be a favored spot for golf widows and those who play the game at long distance while enjoying the relaxation of the rocking chairs.

The grounds will be landscaped and by next fall should present a beautiful setting for the building. Furnishings are now the problem, but committees will be appointed at the annual meeting and necessary equipment will be purchased at once.

Opening in the spring of 1936 with twenty charter members, who purchased the site, there are now a large number of members, whose families enjoy this beautiful recreation.

The golf course is now attracting many visitors from East Carolina towns, who find it very attractive and enjoyable, and club members are becoming more enthusiastic all the time, since the cooler weather has made the links more inviting. Several new members have recently been taken into the club and many others are expected to join in the next few weeks.

Local citizens, who are not already members are invited to join the club and get the full benefit of the course during the fall. The family membership is only \$10, with monthly dues of \$2.50 plus tax.

The old family spirit of excellent golfing in general, was brought out in a most successful inter-club tournament during May, when brotherly love, fairness and sportsmanship were shown by all.

D. A. R. Chapter House To Have Formal Opening

The new Major Benjamin May Chapter House, of colonial architecture, handsome chaste and spacious, is a source of justified pride to every citizen in Farmville, whether officially connected with the organization or not, for the construction of this beautiful building is an outstanding achievement.

The Chapter House is serving Farmville in the way of an ideal cultural center and its formal opening, to be held in October, will be an epoch in the history of the town. Present plans designate a program of wide interest, in which notable figures and State officials will take part, and hundreds of interested out of town people will join the community in celebrating this occasion.

Many exquisite gifts of furnishings for the House have been presented to the Chapter in anticipation of its event. Erected at a cost of around \$12,000, the new home of the Daughters was made possible by a gift several years ago of the site, and by the subsequent gift of \$5,000 last year by A. C. Monk, who is not only a prominent tobacconist, banker and church man, but a community-minded citizen, whose generosity has been extended to many worthwhile movements and to various religious bodies here for the past several years.

The Chapter, with a membership of sixty, is one of the most active and vigorous in the State. Mrs. Henrietta M. Williamson is regent.

Handsomeness in the South, represent the church life in Farmville, the Protestant churches being directed as a whole by a ministerial board, of which Rev. H. M. Wilson, Presbyterian minister, is president and Rev. B. B. Fordham, Baptist pastor, is secretary. A fine spirit of cooperation exists here among the religious bodies.

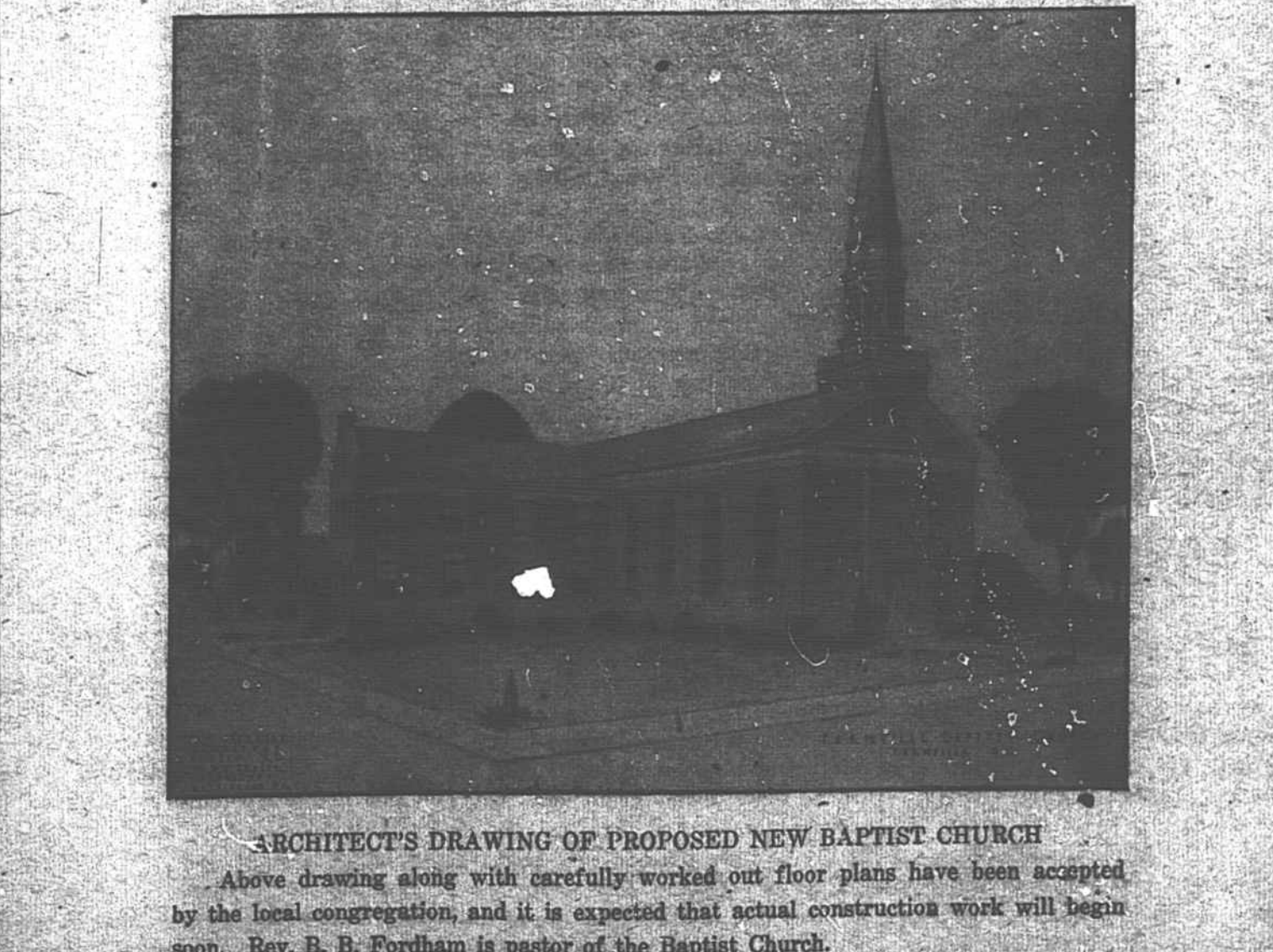
ARCHITECT'S DRAWING OF PROPOSED NEW BAPTIST CHURCH

Above drawing along with carefully worked out floor plans have been accepted by the local congregation, and it is expected that actual construction work will begin soon. Rev. B. B. Fordham is pastor of the Baptist Church.

Progress Noted In Churches Here

Membership Comprises Majority of Citizenship—Ministerial Board A Live Organization.

Each of the seven churches of the town, listed below, with the date of establishment, has experienced notable progress under the concerted leadership of the pastors, also recorded, during the past year. The social and cultural life



Handsome Home of the Benjamin May Chapter, D. A. R.

The cry of most taxpayers is "Cut expenses, but don't lop off anything that will affect me or mine." International trade has just about reached the point where the nations have nothing to use for money. Federal Reserve under puts industrial production at 97 in June, against 92 in May. Many a compliment, spoken in jest, repeats the recipient to think about the compliment.

CHURCHES

- BAPTIST CHURCH**
Rev. Buford B. Fordham, Pastor
9:45 A. M.—Sunday School
Davis, Superintendent
11:00 A. M.—Morning Worship
6:30 P. M.—Baptist Training
8:00 P. M.—Evening Worship
8:00 P. M.—Wednesday — Pr Meeting
- CHRISTIAN CHURCH**
Rev. C. B. Mashburn, Pastor
9:45 A. M.—Sunday School
Hollard, Superintendent
11:00 A. M.—Morning Worship
6:00 P. M.—Junior and Senior
8:00 P. M.—Evening Worship
8:00 P. M.—Wednesday — Pr Meeting
- EMMANUEL EPISCOPAL CHURCH**
Rev. Jack B. Rountree, Rector
10:00 A. M.—Sunday School
Joyner, Superintendent
11:00 A. M.—First Sundays — Communion and sermon.
11:00 A. M.—Third Sundays — Prayer and sermon.
- METHODIST EPISCOPAL CHURCH**
Rev. D. A. Clark, Pastor
10:00 A. M.—Sunday School
Moran, Jr., Superintendent
11:00 A. M.—Morning Worship
6:30 P. M.—Young Peoples Group
8:00 P. M.—Evening Worship
- PRESBYTERIAN CHURCH**
Rev. H. M. Wilson, Pastor
9:30 A. M.—Junior Chn
10:00 A. M.—Sunday School
Paylor, Superintendent
11:00 A. M.—Morning Worship
8:00 P. M.—Wednesday — Pr Meeting
- PRIMITIVE BAPTIST CHURCH**
Rev. J. B. Roberts, Pastor
11:00 A. M.—Second Sundays—Morning Worship
- CATHOLIC CHURCH**
Father Howard V. Lane, Pastor
Holy Mass
10:30 A. M.—1st and 2nd Sundays
8:30 A. M.—3rd and 4th Sundays

We regret to report the fact, but the idea that times will be better greatly in the future is an idle wish.