

**Activities Of Local Church Organizations**

**Christian**  
Group No. 1 of the Christian church, met with Mrs. L. E. Turnage on Monday night. Mrs. Russell Mizelle, assistant group leader, presided in the absence of Mrs. R. E. Moore. The devotional was given by Mrs. Z. B. T. Cox, who gave two chapters from the Mission study book, "Beginning at Jerusalem," by

Dwight E. Stevenson. During the business session that followed, plans were made for the annual homecoming dinner on October 7. Mrs. George Williams was appointed leader of a special committee at this time. The group also discussed the Area Assembly which is being held in Wilson, October 3, 4. Mrs. R. E. Pickett and Mrs. B. O. Taylor reported on plans and progress of the Christmas card sales. A discussion of Hidden Answers, was led by Mrs. A. C. Turnage. The

hostess served chocolate-covered cup cakes and London mist. Sixteen members were present.  
**Group 2, Christian**  
Mrs. W. M. Greene and Mrs. Paul Allen, presided joint hostesses when Group 2, of the Christian Church met on Monday night, at the home of the former.  
The devotion and study were given by Mrs. Charlie Latchworth, who used as a reference, the book, "Beginning at Jerusalem."  
Mrs. Greene, chairman, presided over the business session during which Mrs. C. A. Lilly, Jr. reported that the group's sample Christmas cards would be displayed at the C. B. Maaburn Plumbing office.  
New member, Mrs. Claude Johnson, and a guest, Mrs. J. P. Scott, were present.  
Devil's food cake and coca colas were served by the hostesses.

**Group 3, Christian**  
Group 3 of the Christian Missionary Society met at the home of Mrs. J. O. Pollard on Tuesday night with Mrs. Pollard as hostess.  
Mrs. Matthew Dail, chairman, presided and welcomed Mrs. Bennie Wooten, a new member.  
Mrs. R. K. Pippin conducted the world call questionnaire and Mrs. Louise Harris gave the devotional from the book "Beginning at Jerusalem."  
During the social, the hostess served potato puff, party sandwiches, chocolate covered cookies in leaf design, nuts, pickles and fruit shrub beverage.

**Group 4, Christian**  
Mrs. C. L. Jones and Mrs. Letha Edwards were hostesses to Group 4 of the Christian Church at the Moyer Community building at Lang's Crossroads, Tuesday night.  
Mrs. C. L. Ivey, Sr., chairman presided. Plans were made and committees were appointed to help with the Homecoming observance. Members were urged to attend the Area Assembly that met in Wilson this week. Mrs. Lloyd Smith gave the devotional.  
Caramel cake and brick ice cream was served the fifteen members present.

**Loyal Woman's Class**  
The Loyal Woman's Class of the Christian Church, held its first fall meeting on Friday night of last week with Mrs. G. E. Thompson as hostess in the home of her daughter, Mrs. T. R. Mizelle.  
Mrs. Lee Corbett, president, presided over the business session. Mrs. Louise Harris made the card report. Mrs. Hubert Dixon gave the devotional and Mrs. C. L. Ivey, Sr., was program leader.  
The hostess was assisted in serving cookies, salted pecans and fruit punch, by Mrs. Mizelle and Mrs. L. E. Flowers.

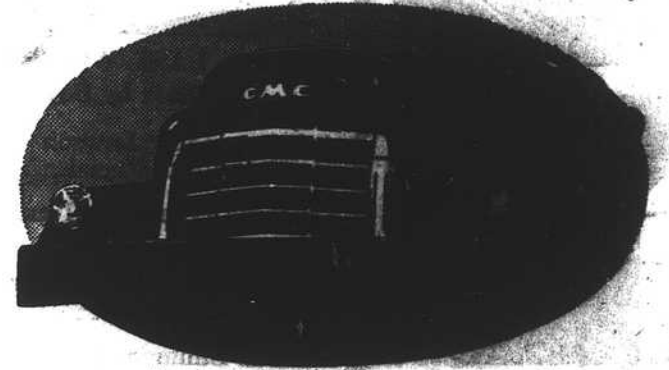
**Worker's Council Meeting**  
The Methodist Worker's Council met in the pastor's study at the church Monday night with a large attendance of officers and teachers present.  
Dewey Fuquay, Church School superintendent, presided.

**For Free!**  
**\$24,896.32**

This is the amount of money farmers selling tobacco with Keel Planters Cooperative SAVED on their warehouse charges in 1950. If you are in the market for EXTRA INCOME without EXTRA EFFORT sell the remainder of your tobacco at Keel's Warehouse.

We do not book floor space to any privileged few. Our doors are wide open to all tobacco farmers, large and small alike. Load it up and drive right straight to GREENVILLE, The Best Tobacco Market In The State.

**Keel Planters Cooperative Inc.**  
"Make While You Save"



What's the fastest-growing line of trucks in America?

LOOK around you—in cities, on farms, at terminals and loading docks—wherever goods are moved on wheels. More and more, the pay load's packed on a GMC.  
You see those letters on medium and heavy Diesels, the most economical workers in their field. For GMC means first in Diesel power.  
You see gasoline-powered GMC's front-running the highways of America—pace-setting delivery of the necessities of peace and war.  
You see nimble bantamweights of the family—the highest-powered 1/2- to 2-tonners made—outpulling, outhauling every other truck in their class.  
Ever wonder why GMC's gaining a greater percentage of the industry than any other truck-maker?  
Ask the truck drivers themselves. See the confident way they talk of

the power plants, the broad-shouldered chassis—the way a GMC handles. Ask about the tons they've hauled, the miles they've logged—the nip-and-tuck schedules they've licked time and again. Ask these cost-wary haulers why they've made GMC the fastest-growing fleet in the land. They'll tell you it's because GMC is the finest motor truck made. If you'll come in, we'll show you why we think they're right.



**Farmville Motor Company**  
113 North Main Street Farmville, N. C. Telephone 284-1

Size it up and you'll see why  
**More People Buy Chevrolets Than Any Other Car!**



**Longest of the Lot**  
Chevrolet looks longest, Chevrolet is longest... a swank and sweeping 197 1/2 inches over-all that tops any other car in the low-price field. Size up Chevrolet's greater length, and you'll find it hard to settle for less.  
**Most Road-Hugging Weight**  
Gives you more road-hugging, road-smoothing weight... a hefty 3140 pounds! in the model illustrated that no comparable car in the field can match. Get the feel of this big car, and you won't settle for less. (Shipping weight.)  
**Widest Tread in Its Field**  
Here's the steadiness of the widest tread in the field... 58 3/4 inches between centers of rear wheels. Once you've known the better roadability of Chevrolet's wider tread, you wouldn't settle for less.

**Finest Comfort Features**  
Luxury of Body by Fisher... cradled ease of unitized Knee Action... smooth control of Center-Point Steering!  
**Biggest Brakes of Any Low-Priced Car**  
Big, powerful Jumbo-Drum brakes—largest in the low-price field! Use the car's own momentum to increase stopping power.  
**Way Ahead with Valve-in-Head**  
The trend's to valve-in-head. And Chevrolet's had it for nearly 40 years! Get sparkling performance and real over-all economy.



America's Largest and Finest Low-Priced Car!

Join the Shift to No-Shift **POWERGLIDE** Automatic Transmission\*  
Sensationally smooth! Excitingly easy! It's a new experience in driving, the modern way to drive. Costs little more—or even less—than many a car with standard gearshift!  
\*Combination of Powerglide Automatic Transmission and 105-h.p. Engine optional on De Luxe models at extra cost.

**B & W CHEVROLET COMPANY**  
W. Wilson Street — Phone 370-1 — FARMVILLE, N. C.

**STAGE SHOW**  
**FREE TO ALL**

**Turnage Implement Co.**  
Presents Its' Annual

**'Family Party'**

**Thursday, . . . Oct. 18 7:30 P. M.**

**Comedy - - Music - - Prizes - - Movies**

**High School Auditorium**  
FARMVILLE, N. C.

You Are Cordially Invited To Hear And See

**ARTHUR SMITH**  
and the **CRACKER JACKS** in Person

