

Washington News Letter

- Stevenson Catching On—
- G.O.P. Worried—
- Is It Too Late?
- Ike Had Tremendous Lead—

Governor Adlai Stevenson is finally catching on in the key states, and nearly every poll or survey shows him gaining on General Dwight D. Eisenhower at present. Yet the General has long enjoyed a tremendous lead, which was more than 60-30 in many states, and this is a considerable handicap. The fact is, however, that the Stevenson momentum is disturbing the Republicans and encouraging the Democrats, who were beginning to be discouraged the first of the month.

Stevenson's campaign began peaking up when he reached California, in the first third of the month. His stock has risen in Illinois, Michigan, California, and other key states, as well as in many less important states. It has risen in New York City, and some claim in upstate New York, but this latter claim is hotly contested and is traditionally G.O.P. territory.

The vital question facing Democrats is whether they can maintain the present swing, or trend, through November 4. If they can, Stevenson will probably be elected, since he is considered to have drawn even in the critical states of New York, California and Illinois—and a further gain would probably put him over. However, the history of the campaign shows that one candidate rides a swell for a time and then the trend reverses.

Stevenson's first tide came immediately after he was nominated and lasted some five weeks. By late Au-

gust he had lost his momentum and General Dwight D. Eisenhower was still out front by a considerable margin. The latest rush by Stevenson developed at the beginning of October and is now in force. If it lasts through November 4, the Governor is to be hard to stop.

On the other hand, if the Republicans regain the offensive and initiative in the campaign before November, as they are planning to do, the election might catch the Democratic effort in a lull. Certainly the Democrats have been going all-out in recent weeks with President Truman, Stevenson, Vice President Barkley and Estes Kefauver besting the bushes. It is this attack which has given them the momentum they now have. Because the Democrats were so far behind, this all-out attack was a must in early October.

The Republicans have not yet been desperate. If they find themselves in such a period of anxiety, it will be then that all the stops will have to be pulled, in an all-out drive for victory. The last week of the campaign might tell the story in that case.

The most comforting fact for Republicans is the heavy margin of popularity Ike built up before Stevenson got into the race. Many people are still convinced that the Democrat can never catch and surpass this popularity by November 4, in spite of the frantic pace now being pursued by Democrats everywhere? But there

is just enough doubt to cause concern and most Republicans don't wish any part of over-confidence this time. This explains their real concern over Stevenson's recent gains, even though they are convinced he is still trailing the General.

Some of the surprising developments of the campaign so far have been the signs of strength registered by the General in several Southern states and the signs of popularity Stevenson has shown in states like Pennsylvania, Iowa and the west coast states of Washington, Oregon and California.

In Virginia and South Carolina Eisenhower continued to stay strong at present. And while it has been somewhat contained in Florida, that state, as well as Texas, Louisiana, and Tennessee are possible in the G.O.P. column. While Ike might not carry these Southern states, his strength in all of them is surprising and very real. At this stage he is apparently headed for victory in at least some of them. That is a definite surprise.

Governor Stevenson, meanwhile, comes up with surprising strength in several sectors. In Pennsylvania where Ike must be ruled the favorite, Adlai has strong Philadelphia and Pittsburgh support—so much that some people give him a sporting chance to carry the state! And in the Midwest, in a state like Iowa, and several others, Adlai has shown eye-opening strength, whether he carries them or not.

He has pulled even in California, when a few weeks back it looked as if he had lost that state, and in Washington he seems to have turned the campaign into a horse race. In Oregon, one of the state's Republican Senators has endorsed him and he shows surprising strength there. It is getting very confusing to those who try to take the nation's pulse. Television and better coverage of the candidates enable people to make up their minds quicker, or to keep up with the latest trend in a campaign that changes rapidly, and is brought into millions of homes every day or two via television.

Workers Allowed To Earn \$75 Without Losing Old-Age Pay

Persons receiving old-age and survivors insurance benefits can now earn as much as \$75 a month without losing their benefits, according to Marshall Barney, manager of the Rocky Mount office of the Social Security Administration.

The amount of wages a person getting benefits is permitted to earn in a month without losing his payment has been raised from \$50 to \$75, beginning last month, September. In case a beneficiary is self-employed, he can accept his benefit checks if his earnings from self-employment do not average more than \$75 a month, that is, more than \$900 for his taxable year. Beneficiaries who work in

employment not covered by the Social Security Act and those who have reached the age of 75, may cash their checks regardless of how much they earn.

Barney pointed out that this "work clause" applies not only to the retired workers, but also to a wife, widow, child, or parent who is receiving benefits based on the social security account of a retired or deceased worker. Any beneficiary who is working for wages should notify the Social Security Administration promptly if he earns over \$75 in one month. A self-employed beneficiary should notify the Administration as soon as he sees that his net earnings are likely to average more than \$75 a month for the taxable year.

WILLIAM RICHARD HEDGEPEATH

William Richard Hedgepeath, 76, Route 1, Farmville died in Pitt Memorial Hospital, Sunday night at 7:05 o'clock following an extended illness, critical for about a week.

He was the son of the late Jim and Ellen Hedgepeath of Halifax county. He moved to the Farmville section of Pitt county over 50 years ago. He was a successful and faithful farmer in this community. He was employed by Mr. Ben Lewis for over 30 years. He was one of the oldest members of Kings Cross Roads Free Will Baptist church, having been a member for over 60 years, which he attended faithfully until declining health forced him to limit his participations in the religious activities of his church.

Funeral services were held from his home Tuesday afternoon at 2 o'clock. Rev. L. B. Manning of Fountain, officiating. Interment followed in the Hollywood Cemetery of Farmville.

The choir composed of Mr. and Mrs. Richard Bundy, Mr. and Mrs. T. C. Tugwell, Mrs. G. T. Pollard, Jr., Miss Ruth Corbitt, Miss Peggy Tugwell, Miss Patay Tyson, Miss Jeanette Pollard, and Mr. Ervin Dunn sang "Near To The Heart of God," "Safe In The Arms of Jesus" at the request of Mrs. Hedgepeath, and "The Old Rugged Cross" at the home. At the graveside the choir sang "Face to Face."

Men in the community served as floralbearers. His nephews were pallbearers.

Surviving is his wife, the former Nettie Gardner, one son, W. Edgar Hedgepeath, Route 4, Kingston one brother, Jorden O. Hedgepeath, Route 2, Farmville, 16 grandchildren, 18 great grandchildren.

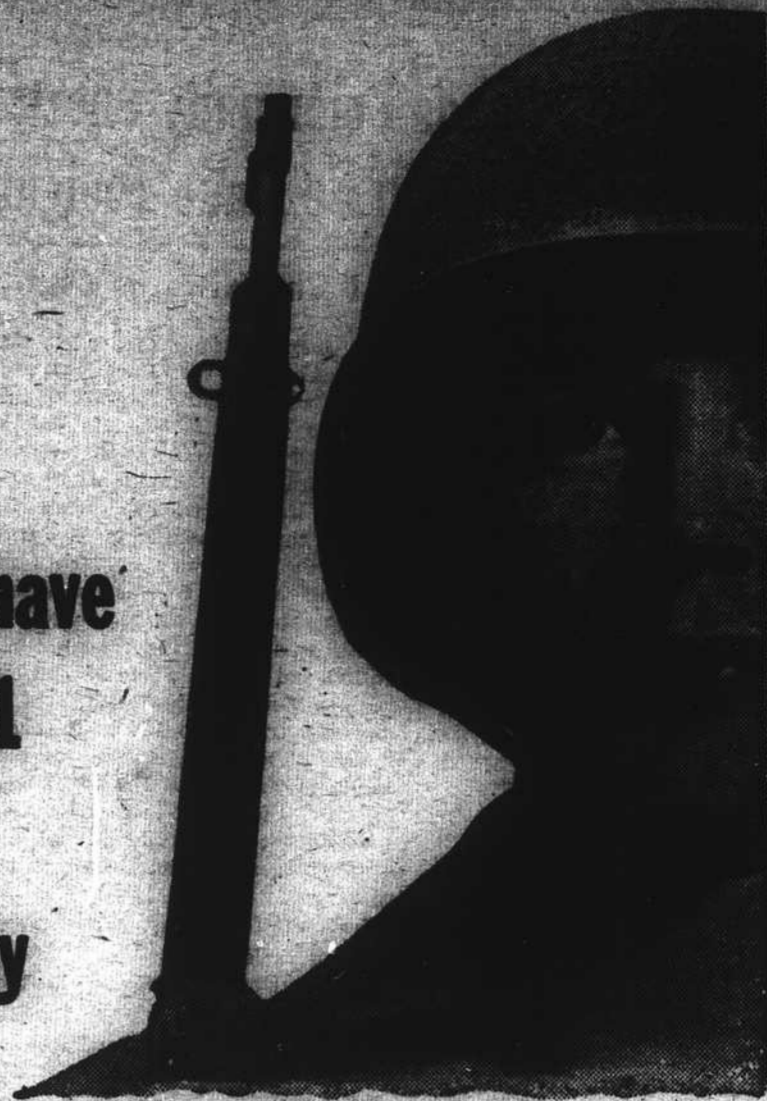
Don't let Old Age overtake you without some means of support. Save with us. Farmville Building and Loan.

POSTAL DEFICIT
The postal deficit this fiscal year will be about \$270,000,000, according

to Postmaster General Jesse M. Davidson, who points out that only \$120,000,000 in third class mail

of around \$255,000,000 in second-class mail \$120,000,000 in third class mail and \$255,000,000 in fourth-class mail are expected.

He would have been 21 this Tuesday



... just old enough to vote. Call him Bill or Ed or Tony—he was just one of the neighborhood boys. Perhaps you heard about him on the news broadcast or read about him in the paper...

"Advances forces of United Nations troops in Korea, have recaptured Hill 704 in the face of stiff enemy resistance. American casualties were..."

He would have been 21 years old this Tuesday, November 4th... just old enough to vote. Now—nobody can presume to speak for this young man. Nobody can say for sure that he would have voted for this candidate or that—for one party or another. But this we do know

... with his life he has cast his vote against a monstrous opponent—one that seeks to control the minds and souls of all mankind... that opponent who says: "The state is everything—the individual, nothing."

That young man might have been standing in the line next to any one of us next Tuesday—waiting to cast his first vote.

But—he will not be there. Will you be sure to cast your vote this coming Tuesday? Go to the polls and vote according to your conscience and convictions... but, above all

★ Be sure to Vote ★

This advertisement published as a public service by

Carolina Power & Light Co

L-U-M-B-E-R and Building Supplies

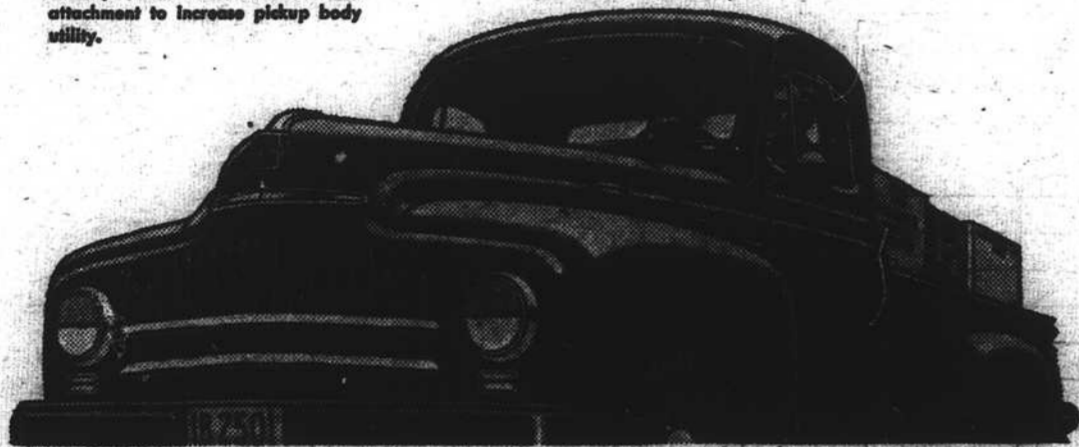


Farmville Retail Lumber Yard

PHONE 302-1

Next to Norfolk-Southern Depot — Farmville, N. C.

International light-duty pickup models available with 94, 9 and 8-foot bodies. GVW ratings 4,200 to 8,600 pounds. Ask about Add-a-Rack attachment to increase pickup body utility.



Pick of the 1/2-ton pickups!

When you're in the market for a 1/2-ton pickup, it pays to look hard at the pick of the lot—International.

Here's real-truck muscle in every part to give you that extra drive for the tough jobs; extra years of thrifty operation. Here's the roomiest cab and the smoothest ride you can find in any truck. Come in and see all that International has to offer you in a light-duty truck:

• International light-duty trucks—1/2, 3/4, and 1-ton sizes, 115, 127, and 134-in. wheelbases. Body types include pickup, stake, panel, Metro, utility, and others.

• Silver Diamond all-truck valve-in-head engines give that extra power when you need it. But just as impor-

tant, they save you plenty on gasoline and maintenance.

• Unmatched handling ease! International's Super-steering system makes truck driving child's play. Wider front axles make possible a full 37° turning angle for easier handling and better control!

• Comfo-Vision Cab—the roomiest, most comfortable cab on the road. Designed by drivers for drivers. The wide seat holds three with ease. The one-piece Sweepflight windshield insures perfect visibility. New green-tinted, non-glare safety glass available.

• Better roads mean a better America

For complete information about any International light-duty truck, come in and see us—

TURNAGE IMPLEMENT CO.

Farmville, N. C.

INTERNATIONAL TRUCKS

A Star Is Born

ODIN BEAUTYDRYER

AUTOMATIC GAS CLOTHES DRYER

WITH THE FAMOUS LOVELL DRYING SYSTEM

world's top standard of quality
AVAILABLE AT GARNER'S

- Modern —
- Economical —
- Especially for Use with LP Gas
- Electric Ignition

- Humidity-Temperature Control — You Dial Dryness Desired — Not the Time

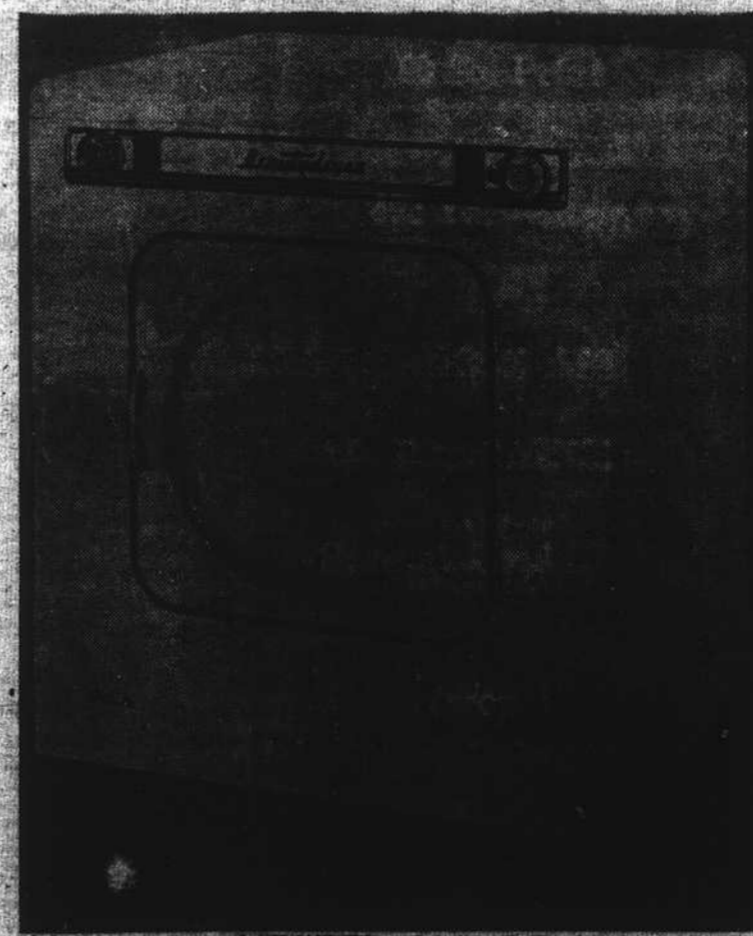
Tabletop Work Space

A. G. A. Approved

Automatic Safety Shut-off and Reset

Large Door Permits Easy Loading and Unloading

100% Safety Shut-off



299.95

Easy Terms

Measurements

WIDTH 30 in.
DEPTH 24 1/2 in.
HEIGHT 38 in.
Shipping Weight - 200 lbs. Approx.

Hollow Vane For Cleaning
Three Safety Control Thermostats

Highest Evaporation Rate

Large Lint-Trap With By-Pass

No-Overrun — Beautydryer Shuts off when Clothes Reach Desired Degree of Dryness

Outside Venting If Desired

Operates on Any Kind of Gas

Underwriters Laboratory Approved

Garner Furniture Company

FARMVILLE, N. C.