

ECZEMA!



There isn't one of those fake free treatment offers you have seen so many times. We don't offer to give you something for nothing—**but we do guarantee that you can try this wonderful treatment, entirely at our risk, and this guarantee is backed by your local druggist.**

This makes the offer one which you can absolutely depend upon, because the druggist with whom you have been trading would not stand behind the guarantee if he did not know it to be an honest and legitimate one.

Hunt's Salve, formerly called Hunt's Cure, has been sold under absolute money back guarantee for more than thirty years. It is especially commended for the treatment of Eczema, Itch, Ring Worm, Tetter, and other itching skin diseases.

Thousands of letters testify to its curative properties. M. Timerik, a reputable dry goods dealer in Durant, Oklahoma, says: "I suffered with Eczema for ten years, and spent \$1,000.00 for doctors' treatments, without result. One box of Hunt's Cure entirely cured me."

Don't fail to give Hunt's Salve a trial—price 75 cents, from your local druggist, or direct by mail if he does not handle it.

A. B. RICHARDS MEDICINE CO., Sherman, Texas

SEE EFFICIENCY IN FARM TOOLS

Tractor Covers More Ground in Day Than Man With Six Horses in Plowing.

TWO-ROW CORN CULTIVATOR

Use of Corn Binders Increases Efficiency of Man-Labor 50 Per Cent Over That Done by Hand—Good Work of Hay Loader.

(Prepared by the United States Department of Agriculture.)

With a 28-inch horse-drawn plow, one man accomplishes from 70 to 80 per cent more than with a single-bottom plow. One man with a 28-inch plow drawn by a tractor covers from 80 to 35 per cent more ground in a day than does a man using six horses



The One-Horse Cultivator Illustrating Waste of Man-Labor Actually Entailed by Using Small Implements.

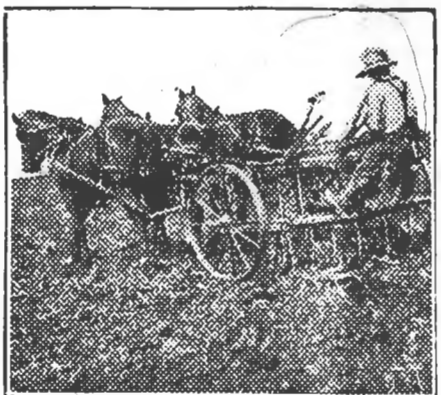
on a horse-drawn plow of the same size. A three-bottom plow drawn by a suitable tractor enables one man to accomplish from 60 to 70 per cent more than does the two-bottom plow drawn by six horses.

Two-Row Cultivator.

These facts were brought out by about 600 replies to an inquiry addressed to farmers in central Illinois by the office of farm management, United States department of agriculture. Under conditions where the use of a two-row corn cultivator is practicable, this machine enables one man to cover nearly twice as much ground per day as with a one-row cultivator. In the section represented by replies received by the department, three horses are most commonly used on the two-row cultivator and the addition of a fourth horse apparently increases but little the amount of ground covered per day.

Such of these farmers as use corn binders have found the use of this machine increases the efficiency of man labor 50 per cent, on the average, over that achieved when cutting and shocking by hand. Eighty bushels, the reports show, is an average day's work for one man when husking corn from the standing stalk by hand.

Value of Hay-Loader. With respect to the value of a hay-loader, they learned that the use of this implement reduces by about 25



The Two-Row Cultivator—One Man and Three Horses Doing the Work of Two Men and Four Horses With Two-Row Cultivator, or of Four Men and Four Horses With One-Horse Cultivator.

per cent the time required to put on a load of hay, while the amount of labor required for unloading into the mow is only a little more than half as great when a hayfork is used as when the work is done by hand.

BOOST FOR PUREBRED SIRE

Efforts Being Made to Eliminate Scrub Sires Appreciated by Many Stock Breeders.

Many breeders of purebred stock do not realize the value of the state and national purebred sire crusade. They fail to see that this crusade is increasing the use of purebred sires and consequently, increasing the demand for them and prices.

This crusade is a business proposition and is of greatest value to the breeders of purebred stock and they should support it.

APPEARANCE OF FARM HOME

Surroundings Must Be Made Attractive to Uplift Family, Visitors and Passersby.

A home and its surroundings must be attractive in order to be most uplifting to the family, visitors, and passersby. Farmsteads especially need attention in order to secure satisfactory conditions, says the United States department of agriculture. The farm home and the farm business are so closely related that the success of the latter is reflected in the appearance of the former.

TIMBER PROFITABLE FOR UNUSUAL SPOTS

Many Corners and Slopes Can Be Utilized by Trees.

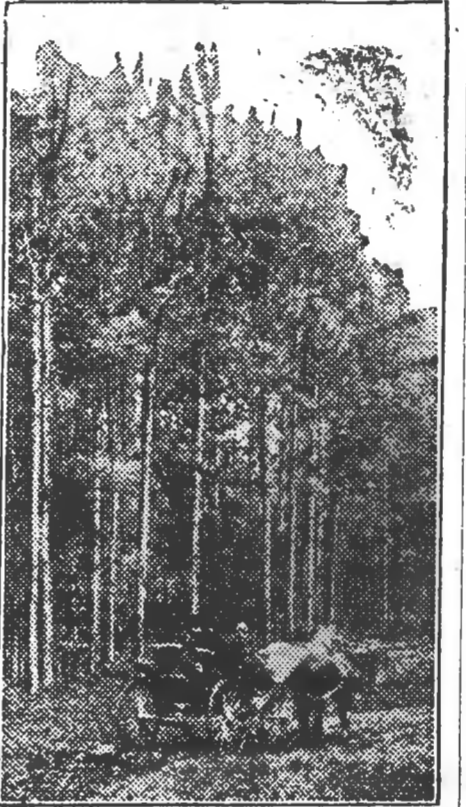
Locust and Acacia Build Up Poor Soil Through Nitrogen-Gathering Bacteria in Root Nodules—Small Gullies Checked.

(Prepared by the United States Department of Agriculture.)

Timber is essentially a poor-land crop. Steep slopes, poor soil, rocky land, unusual corners, gullied and wooded tracts—all these afford opportunities for growing timber profitably. A careful survey of the average farm will reveal a surprising number of spots of this sort which can be utilized to advantage. If they do not already have trees, planting them with the proper varieties will materially increase the value of the land.

Certain kinds of trees, like the locust and the acacias, build up poor soil through the nitrogen-gathering bacteria in the root nodules, according to the forest service, United States department of agriculture. The soil building power of trees on slopes is a fact which the farmer should not overlook. Steep lands, which have been cleared of timber at much expense, after being cultivated for a few years often become gullied, and the rich lands adjoining are covered with deep deposits of sand. The surest and cheapest method of protecting such slopes is to maintain forests on them.

Small gullies can be stopped up by closely packed brush and treetops, an-



A Good Stand of Young Short-Leaf Pine.

chored by stakes if necessary. Large, open gullies are checked successfully only by planting over the entire gully basin, supplemented by low brush dams across the larger units of the gully.

INSURE RAPID TREE GROWTH

Sod-Mulch Method Is Not Intended for Trees Just Planted—Aim to Conserve Moisture.

The conditions for young trees should be made so favorable that they will start rapidly into growth so that a good, well-ripened growth will be assured before winter. While the sod-mulch method of growing trees gives very good results under certain conditions it is not intended for trees which have just been planted. When the sod-mulch method is adopted it is usually after the trees are well established, when the ground is seeded down to grass and when sod is formed the grass is cut and a pile put about each tree. This kills out the sod about the tree, allows air to penetrate readily and conserves moisture. The drawback to this system is that very often there is not sufficient material grown in the orchard to make enough mulch for each tree, and the sod is not conserved.

ADD FERTILIZER TO MANURE

Yield of Corn Increased by Eleven Bushels Per Acre in Experiment at Ohio Station.

The fact that manure itself is not a balanced plant food, but may, with profit, be reinforced with phosphate, is becoming more and more a matter of general knowledge.

At the Ohio experiment station fertilizer added to manure, increased the yield of corn by 11 bushels per acre.

The residual effect of the fertilizer increased the wheat crop which followed the corn by five and a half bushels per acre. The clover crop, following the wheat, showed a gain of 1,100 pounds of hay per acre. The fertilizer paid for itself three times.

CURRENT WORM IS HARMFUL

First Brood Appears Early in Spring and They May Be Destroyed by Arsenical Spray.

The imported currant worm is about three-fourths of an inch long, green with yellow tips. They appear first in early spring as soon as the leaves are out, and there is one other brood, and sometimes a third later in the season. They devour the foliage. These are readily destroyed by an arsenical spray or a dusting with an arsenical poison. By catching the first brood there will be little trouble later in the season.

CALOMEL DANGER TOLD BY DODSON

Says You Cannot Gripe, Sicken, or Salivate Yourself if You Take "Dodson's Liver Tone" Instead

Calomel loses you a day! You know what calomel is. It's mercury; quicksilver. Calomel is dangerous. It crashes into your bile like dynamite, cramping and sickening you. Calomel attacks the bones and should never be put into your system.

When you feel bilious, sluggish, constipated and all knocked out (and believe you need a dose of dangerous calomel) just remember that your druggist sells for a few cents a large bottle of Dodson's Liver Tone, which is

entirely vegetable and pleasant to take and is a perfect substitute for calomel. It is guaranteed to start your liver without stirring you up inside, and can not salivate.

Don't take calomel! It can not be trusted any more than a leopard or a wild cat. Take Dodson's Liver Tone, which straightens you right up and makes you feel fine. Give it to the children because it is perfectly harmless and doesn't gripe.—Adv.



Write for the booklet "Our Wives and Daughters." Full of information every woman should have; including voluntary testimony and advice from women in all walks of life who know by experience what Stella Vitae will do for women.

Stella Vitae is the famous prescription of an old family physician, successfully used in a long, life-time practice. Sold under agreement that if the first bottle fails to benefit money will be refunded. Ask your druggist.

Mrs. D. S. Hamilton, of Milner, Ga., Route 1, writes: "It gives me pleasure to testify to the benefit which both my daughter and myself have derived from the use of STELLA VITAE. For some time the doctors of our neighborhood had treated my daughter without success. One bottle of STELLA VITAE in three weeks' time completely cured her. My own health has been restored by STELLA VITAE; and no doctor has been called upon to treat any member of my family since I began using Dr. Thacher's Remedies."

THACHER MEDICINE CO., Chattanooga, Tenn., U.S.A.

STELLA-VITAE

WOMAN'S RELIEF MOTHER'S CORDIAL

The Bulge That Counts. Our observation is that folks forgive a man's trousers for bagging at the knees if they bulge at the pockets.—Dallas News.

Cuticura Soothes Baby Rashes. That itch and burn with hot baths of Cuticura Soap followed by gentle anointings of Cuticura Ointment. Nothing better, purer, sweeter, especially if a little of the fragrant Cuticura Talcum is dusted on at the finish. 25c each everywhere.—Adv.

METHOD IN THAT MADNESS

Why Dad Could Not Bring Himself to Make Serious Objections to Gerald's Smoking.

"Henry!" Mrs. Brown's voice was stern. Mr. Brown recognized the signs of a coming storm, so he prepared to listen.

"I saw Gerald—our boy—smoking a pipe today—actually, a dirty, smelly pipe!" the poor woman ended with a sob.

"Well, what can we do?" exclaimed her husband. "The boy's seventeen, and has two dollars a week pocket money. I don't see—"

"You mean to say that you will allow him to smoke? Why, it's sheer madness!"

Henry nodded. Then, after witnessing the unique spectacle of his wife speechless for once, he strolled off into the garden, where he came across Gerald in a corner with the pipe going full blast.

"Hello, my boy!" he cried. "This is something new, isn't it? Er—by the way, I've left my pouch in the house. Can you give me a fill?"

Then he, as he walked away puffing happily, murmured: "It may be madness, but there's method in it. I can see Gerald's pouch being quite a money-saver to poor old dad."—Rehoboth Sunday Herald.

Occasionally a thin woman has the art of not showing it.

Kill All Flies! THEY SPREAD DISEASE. Placed anywhere, DAISY FLY KILLER attracts and kills all flies. Neat, clean, ornamental, convenient and cheap. Lasts all season. Made of metal, can't spill or tip over; will not soil or injure anything. Guaranteed.

FLY KILLER at your dealer or by EXPRESS, prepaid, 75c. HAROLD SOMERS, 150 De Kalb Ave., Brooklyn, N. Y.

WINTERSMITH'S CHILL TONIC

Sold for 50 Years. FOR MALARIA, CHILLS AND FEVER. Also a Fine General Strengthening Tonic. At All Drug Stores.

BUILT MANY CENTURIES AGO

Florida's Shell Mounds Believed to Date Back to Before Beginning of Christian Era.

Florida's shell mounds, which are found in different portions of the state, are unquestionably of human construction, and were probably built by some race of people who inhabited the country about the beginning of the Christian era. These mounds were found overgrown with herbage and forest as long ago as when the first red man set foot in Florida, and the fact that the deposit of earth above them was sufficient to give place to the root of trees proved their great age.

There have been found in all these mounds pieces of pottery imbedded in the shell conglomerate, as well as articles made of shell and bone, rude stone implements and many bones of fish and animals, such as deer, terrapin, rabbits, alligators and others. There are in the entire state about forty mounds, the most important of which are those of King Phillip's town, near the outlet of Lake Harney, which are 450 feet long, from 100 to 150 feet broad, and with an average height of eight feet.

A little folly is desirable in him that will not be guilty of stupidity.—Montaigne.

SUBSIST MAINLY ON DATES GOT CHARACTERS MIXED UP

Fruit is the Mainstay of Life to the People of Egypt, Arabia, and Persia.

West is, west so far as the palm is concerned, Hawaii, California, Florida, Cuba, Egypt, Palestine, they all have their palms. Of all varieties none is so dear to the heart as the date palm. We all know its delicious fruit, but few can conceive the desert dweller's love for it, for he only can appreciate its grateful shade in the scorching desert heat.

The date palm is always a sure sign of water, for to thrive it must have this. Rising often to a height of 100 feet, it is a haven of refuge to the parched traveler, who knows that to get near it is to find water. Then there is the delicious fruit to be considered, too. Many of us know the date as a luxury—sometimes stuffed or otherwise, but a considerable part of the inhabitants of Egypt, of Arabia and Persia, subsist almost entirely on its fruit. They boast also of its medicinal virtues. Then the camels feed upon the date stone.

Wanted: A Ticket Seller.

"I see you advertise for a ticket seller and ask that ladies weighing more than 200 pounds kindly do not apply."

"Yes."

"Isn't that discrimination?"

"No; merely common sense. Any lady shaping up larger than that could not get into my glass cage."—Film Fun.

According to English Actor, History Is Not a Strong Point With Theatergoers.

The late H. B. Irving once told in Philadelphia a story about his father's performance of Sardou's "Robespierre." He said:

"Two dear old ladies sat in their stalls at the Lyceum, waiting for 'Robespierre' to begin.

"By the way, who was Robespierre?" said the first old lady.

"Why, don't you know?" said the second old lady. "He's the man who was murdered in his bath by Marie Corelli."

"Oh, no, my dear!" said the first old lady. "That can't be right, for Marie Corelli is still alive. I remember who it was, now. It was Charlotte Bronte."

Then, at the end of the story Mr. Irving added:

"I once told this anecdote to a duchess. When I finished the duchess gave a kind of puzzled laugh and said:

"Poor Shakespeare!"

Lady Pygmalion.

The Instructor—That bust is fairly well modeled, but the expression is all wrong. It should be sad and thoughtful.

The Pretty Art Student—I know it and I had expression just right several times, but whenever I'd try to fix his hair or just touch his cheeks with my fingers the face would break into a smile.

Try Postum Instead of Coffee

at the family table for a week or two and see if everyone doesn't relish the change.

Postum Cereal

a drink of delicious flavor—should be boiled fully fifteen minutes to bring out its full-bodied richness.

Better health and comfort usually follow a change from coffee to Postum.

"There's a Reason"

Made by POSTUM CEREAL CO., Inc., Battle Creek, Mich.

For your breakfast Grape-Nuts

A ready-to-eat food that costs but little and is full of the sound nourishment of wheat and malted barley.

Appetizing Economical At Grocers Everywhere!

