



WOOD GOING TO WAR. Billions of board feet of lumber and veneer, and millions of cords of pulpwood must go to war each year to furnish containers for food, equipment, ammunition, and other supplies for America's fighting men. Here, food supplies are being stacked on the deck of a U. S. warship before being sorted for storage below.

In order to obtain sufficient supplies of lumber and pulpwood, Hoke County farmers are urged to cut and market as much timber during the next two months as can be taken from farm woodlands without serious damage to timberlands or to young trees. The present rate of supplies of lumber from the nation's commercial forests is not sufficient to take care of the unprecedented wartime demand, and the government is appealing to owners of non-commercial woodlands to supplement the supply through conservation cutting and marketing of timber.

"Let's give the boys a lift" says A. S. Knowles, County Agent. For information about cutting and marketing pulpwood or mill stock, see the county agent.

Cut-Over Lands Furnish Grazing

Cut-over timber lands can be used advantageously to fill in the grazing gap between winter annuals and lespedeza, report researchers of the State College Experiment Station.

Tests at the animal husbandry farm near Raleigh during three years showed that beef cattle made an average daily gain of 1.21 pounds in the period from mid-April to the last of May.

When the cattle were returned to the woods pasture for a two weeks grazing period, the gains were very poor and in some cases there were losses. The best gains came in the first four weeks, with three yearlings to five acres. The forage consisted chiefly of hardwood browse and native woods grasses.

The State College Forestry Department conducted studies on the grazed area and a similar ungrazed area. Where the woodlands were grazed for approximately two months each spring for three years, the grazed land contained 83 per cent more young pines of six inches in height or more per acre than the ungrazed land.

Trees

In a twenty-year old stand of pines, 312 trees were cut from the total of 870 per acre. After cutting 8 units of pulpwood and 6 cords of fuel wood, 258 choice crop trees were left, reports R. W. Graeber, in charge of Extension forestry at State College.

Atlanta, Ga.; Raybestos Manhattan, Inc.; North Charleston, S. C.; Southeastern Foundries, Inc., Atlanta, Ga.; Taylor Iron Works, Macon, Ga.; Truitt Manufacturing Company, Greensboro, N. C.; J. M. Tull Metal & Supply Company, Atlanta, Ga.; Warlong Glove Company, Conover, N. C.; J. D. Wilkens Company; Greensboro, N. C.

The Navy looks to them to aid in completion of this very vital work, on schedule.

"Success of invasions to come will depend upon the sweat that we put into these landing craft today," Mr. Forrestal emphasized. "The sooner they are built, the sooner the war will be over and the lower the cost in human lives. They must be built quickly. That is our resolution for 1944."

Cattle
Herds of beef cattle in Buncombe, Henderson, Haywood and Macon counties are wintering nicely, reports L. I. Case, Extension animal husbandman at State College.

Pressure cookers for food preservation can now be bought without bothering to apply for a certificate from the local rationing board, report State College home economists.

Superphosphate

Superphosphate for North Carolina farmers under the 1944 Agricultural Conservation Program will be available again this year, announces G. T. Scott, chairman of the State AAA Committee.

About 440,000 cases of canned pork and beans will soon be released to civilian consumers, says a WFA announcement.

Culling

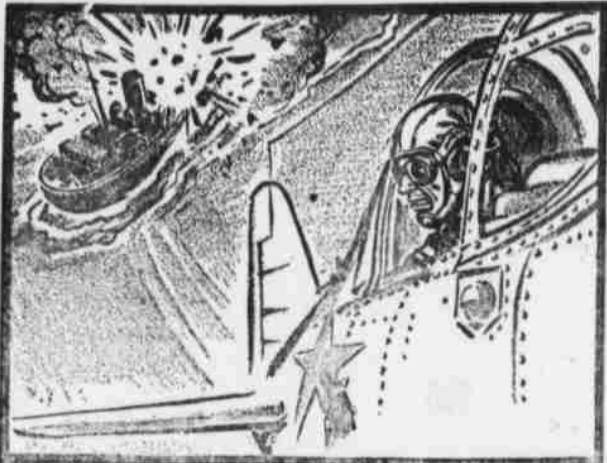
Culling out one-fifth of the layers from the average farm flock will save about 10 per cent on feed costs without sacrificing egg production, says C. F. Parrish, Extension poultryman at State College.

Dust Mask



Lewis Milestone, who directed Samuel Goldwyn's production, "The North Star," shown wearing the dust mask and painter's cap which were G. I. (Goldwyn Issue) to all members of the crew during the tumultuous scenes in which a 10-acre Russian village was burned.

AMERICAN HEROES
BY LEFF



The South Pacific Aerial Exploits Cross has been awarded to First Lt. William P. Campbell, U. S. M. C., of Minneapolis for his solo bombing attack against five Jap transports and ten destroyers. While ship and shore batteries concentrated all their fire against him, filling the air with flak, he dive-bombed the ship formation, blasted a transport with a direct hit. The War Bond you buy today will help load bomb racks to shatter Jap supply lines.

U. S. Treasury Department

Farmers should always collect ration points when they sell or deliver a turkey, also beef, lamb and mutton, say Government officials. A torpedo goes where it is pointed. Don't point the enemy's torpedo by careless conversation — Zip the lip.

Southern Plants Building Vital Invasion Craft

Forrestal Says 80,000 Vessels Being Built By Navy For Knock-out Blows on Japan and Germany.

Charleston, January 12—Success in the forthcoming offensives of 1944 depends upon this Nation's completion of the vast landing craft construction program in which many industries in South and North Carolina, Georgia and Florida, have vital roles. Under Secretary of the Navy James F. Forrestal announced today.

"Invasion dates have been set," Mr. Forrestal said, "American men are going to storm hostile shores, more difficult than any we have heretofore tackled."

"Heavy casualties must be expected. However, the more landing craft we have on Invasion Day, the more power we can put in our punch, the more versatile our attack can be, and the lower the casualties will be in this most hazardous of military operations, the landing on a hostile shore in the face of a determined, experienced, well-equipped enemy."

The Navy with the aid of the manufacturers, shipbuilders and workers of the Nation already has produced 20,000 landing craft, embracing various types, from 450-foot deck ships to amphibian tractors, GUSDALANAL, Africa, Attu, Kiska, Sicily, Salerno, Tarawa — landing craft have been in operation at all of these. An even more ambitious program is in prospect — we are engaged in building 45,000 additional such various special types.

"The total program, therefore, involves 65,000 vessels and in addition, some 15,000 miscellaneous small craft, rubber boats, rafts, etc., are needed to complete the huge project."

In the area, the following plants are working on this program: Navy Yard, Charleston, S. C.; Acme Steel Company, Atlanta, Georgia; Aetna Iron & Steel Company, Jacksonville, Fla.; J. G. Christopher Company, Jacksonville, Fla.; The Crane Company, Jacksonville, Fla.; B. F. Goodrich Company, Atlanta, Ga.; Hajoca Company, Jacksonville, Fla.; General Electric Company, Jacksonville, Fla.; Lincoln Electric Company, Jacksonville, Fla.; Miller-Hydro Company, Bainbridge, Ga.; National Electric Products Company,

THE RAEFORD THEATRE

Thursday Friday Open 5:50	HAPPY LAND Don Ameche — Frances Dee
Saturday	Double Feature Program Valley of Hunted Men MYSTERIOUS DOCTOR John Loder — Eleanor Parker
SUNDAY ONLY Shows At 3-5-9 P. M.	DANGEROUS BLONDES Allen Joslyn Evelyn Keyes Edmund Love
MONDAY and Tuesday Show Starts at 5:30	BOMBERS MOON George Montgomery Anabella Kent Taylor
Wednesday ONLY Shows Starts at 5:30	PASSPORT TO SUEZ Warren William — Ann Savage
Thurs-Fri. January 6-7	STAGE DOOR CANTEEN ALL STAR CAST

CAMEL

FOR FRESH FLAVOR AND EXTRA MILDNESS. CAMELS CLICK WITH ME!

IN THE NAVY AIR CORPS they say:
"PICKLE LUGGER" for torpedo bomber
"DUCK" for an amphibian plane
"FLYING THE WET" for following a civer
"CAMEL" for the favorite cigarette with men in the Navy

FIRST IN THE SERVICE
With men in the Army, Navy, Marine Corps, and Coast Guard, the favorite cigarette is Camel. (Based on actual sales records.)

what ONE ACRE can do

America's food and feed production goals for 1944 exceed all records. The question is being asked—"How many more acres must be put under the plow?" In the face of labor and machinery shortages, the question might better be—"How much more can be produced on every acre now being farmed?"

Experiment station results show that the intelligent use of potash, properly balanced with other essential plant foods, can greatly increase yield and quality. If you do not know just how much potash your soil needs to make every acre do its best, your official agricultural advisers will tell you.

Write us for free information and literature on the practical fertilization of your crops.

AMERICAN POTASH INSTITUTE
1155 Sixteenth St., N. W. Washington 6, D. C.

THE POTASH YOU ARE USING IS AMERICAN POTASH

FERTILIZERS

DO NOT DELAY LONGER

Be Safe - Act Now

Place Order For Your Fertilizer Requirements Then Insist On Immediate Delivery

Due to the acute labor shortage and inadequate transportation facilities it will be impossible to make all deliveries at the last minute.

LET US HAVE YOUR ORDERS

Dixie Guano Company

Telephones Nos. 83, 65 And 66 — Laurinburg, N. C.
We manufacture Quality Fertilizers to suit your needs.

RED SPRINGS THEATRE

PROGRAMME FOR WEEK BEGINNING JANUARY 14th

Thurs.-Fri. Jan. 13-14	Preston Foster and William Bendix in Guadaleanal Diary
Saturday 1:00 til 10:30	Roy Rogers in "KING OF THE COWBOYS"
Extra Special Sat. Nite 10:30	Margo in "Gangway For Tomorrow"
Mon. & Tues. Matinee 3:30	Oliva De Havilland and Sonny Tuft in "GOVERNMENT GIRL"
Wednesday Mat. 3:30	Ted Lewis in "IS EVERYBODY HAPPY"
Thurs-Fri. Jan. 20-21	Lum and Abner in "So This Is Washington"