

The American Way

BY GEORGE PECK

It is idle to deny that the trend in America has been and still is, toward totalitarianism. This has been transpired despite the fact that we have had an opportunity to witness its devastating effects on countries which have adopted totalitarianism, or had it forced upon them. On the other hand, we have before us the indisputable evidence of the beneficence of our American System of Competitive Private Enterprise. Why this desire for a change?

We know that the profit motive of competitive enterprise is the vital propelling force that insures efficiency and stimulates effectiveness in industrial operation and that constituting a further stimulus to initiative, is the constant threat that without efficiency, instead of profits there may be a loss. Why should any American, therefore, object to any individual or corporation making a reasonable profit?

We know that money invested in competitive enterprise, in the main, represents the savings of people who have toiled and earned, and have saved part of these earnings by the practice of thrift and self-denial. Investment in industry and business is in part "venture" capital, which has been risked in enterprise in the hope of making a profit. Such investment is entitled to profit commensurate with the hazards involved and the service performed. We know that millions of Americans have a stake in competitive enterprise. Either in direct ownership of stocks and bonds or indirectly through savings banks, deposits and equities in life insurance companies. Why should anyone who has a stake in competitive enterprise not stoutly resist the trend toward totalitarianism which would rob him of his hard earned savings?

Why, knowing all of the foregoing truths, have we marched along the road to government ownership and centralized, paternalistic government (milestones on the way to totalitarianism) the past few years? Why have a formerly self-reliant people begun to hold out their hands to government for gifts instead of meeting their own responsibilities? Why have we come to believe that government and government only, has the panacea to cure all our ills and ills?

Can it be that we are losing faith in ourselves? It cannot be that competitive enterprise has failed us. Its performance during the war emergency has electrified the entire world. The system admittedly is not perfect and it is true that some of the men running it were not without "sin". But these "sinners" were very few; their careers short-lived, as the system itself automatically eliminates those who do not play the game fairly and squarely.

In the postwar era we are going to need the benefits that derive from competitive enterprise as we have never needed them in all our history. Why not insist that government cease competition with and control over private industry; and that it turn business back to the business man, or of course, under reasonable and non-hampering conditions and regulations?

Under competitive enterprise in peace, we became the wealthiest nation in the world; under the direction of men trained in competitive enterprise, in war, we became the arsenal of the world. Why then should we have the slightest doubt that this same competitive enterprise, which has served us so magnificently in peace and in war, will not go on to even greater accomplishments for the benefit of all the American people after Japan has been vanquished?

State College Answers Timely Farm Questions

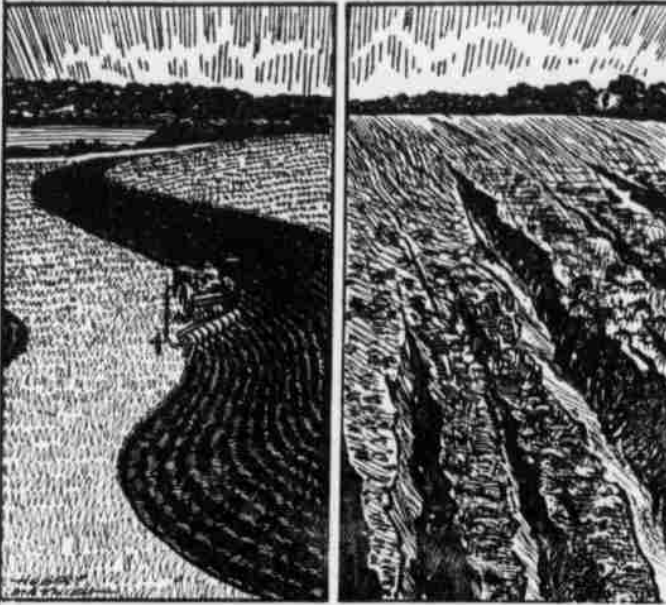
Question: Can alfalfa hay be fed to chickens?

Answer: Yes, says Professor Roy Derrington, in charge of the Poultry Department at State College, if the hay is cut when 9 to 16 inches high and stored inside with protection from the sun or rain. The same is true for other legumes, which furnish an ex-

OUR DEMOCRACY — by Mat

TOP-SOIL

EVERY FARMER KNOWS THAT TO KEEP HIS FARM PRODUCING OVER THE YEARS HE HAS CONTINUOUSLY TO BUILD AND CONSERVE TOP-SOIL VALUES AND TO GUARD AGAINST EROSION.



BUILDING UP "TOP-SOIL VALUES" IS IMPORTANT TO THE FUTURE OF ALL OF US. BY PUTTING OUR MONEY INTO WAR BONDS, SAVINGS ACCOUNTS AND LIFE INSURANCE WE STRENGTHEN THE NATION'S PRODUCTIVE CAPACITY—BUILD OUR OWN SECURITY—GUARD AGAINST THE "EROSION" OF WASTEFUL SPENDING.

cellent supplement to the diet of all chickens. Such hays are rich in vitamins A and G, and also contain minerals and valuable proteins. The hay should be fed in racks in the laying houses.

Question: How can I prevent my workstock from having blind staggers?

Answer: Call in the veterinarian and have the animals vaccinated, says Dr. C. D. Grinnels, veterinarian for the Agricultural Experiment Station at State College.

County Agent W. V. Hays says that blind staggers has been reported in practically every community in Washington county and that most horses and mules are being vaccinated. "No vaccinated stock has been lost from this disease to date," Hays says.

Question: How should I handle my woods to maintain a good stand of growing timber?

Answer: The first step is to cut out worthless and low quality trees in the average woods, says Extensions foresters at State College. Second, cut only the larger trees because logging and milling costs will be lower. Then, take advantage of the pulpwood market by converting tree tops and whole trees, that will not make saw logs, into pulpwood. In managing mixed stands of pine and hardwood selective logging returns the greatest dividends.

State College Hints To Farm Homemakers

(by Ruth Current)

Canning is still in order. The fresher the food the better the canned product will be. Better looking, better tasting, and better lasting so select firm, fresh, ripe fruits and young tender vegetables. If you can't process them immediately, be sure to keep them cool and well ventilated.

Be ready to can before you buy or gather your produce. Get up-to-date, authoritative directions. Be sure the canner is ready for work. Line up your jars and lids for inspection.

Discard chipped or cracked jars, dented or bent lids. Be sure you know how to seal the type you are using. Read directions carefully.

Pack only what you can handle at once, and process quickly. Don't be carried away by bargains and lug home 2 bushels of this or that when you have only time and equipment to process a peck. A few jars at a time is a good plan.

Look over your produce with an eagle eye and put aside any that shows the slightest bruise or decay.

RED SPRINGS THEATRE

PROGRAMME FOR WEEK BEGINNING SEPTEMBER 13

NIGHT SHOWS 7:30 & 9:30

—THURSDAY & FRIDAY—

"Pride of the Yankees"

Gary Cooper and Teresa Wright

SATURDAY—1:30 til 10:30 P. M.

"BLAZING THE WESTERN TRAIL"

CHARLES STARRETT

LATE SHOW SATURDAY 10:30 P. M.

"TWO O'CLOCK COURAGE"

TOM CONWAY — ANN RUTHERFORD

MONDAY-TUESDAY—Matinee at 3:30 Monday

"DIAMOND HORSESHOE"

BETTY GRABLE — DICK HAYNES

WEDNESDAY—Matinee 3:30

"BRIGHTON STRANGLER"

JOHN LAUDER — JUNE DUPREZ

THURSDAY—FRIDAY—Matinee at 3:30 Thursday

"VALLEY OF DECISION"

GREER GARSON — GREGORY PECK

You can cut out the flaws and use such produce in some other way, but if you process defective food you may ruin the whole batch.

Wash—but don't soak—produce until every speck of dirt is removed.

Check your pressure canner for safety's sake. Follow the manufacturer's directions for the canner you are using. Before starting to can be sure the pressure gauge is checked for accuracy. Pressure canners are still not easy to find, so be generous and share yours with your neighbors.

Better use of land and farm mechanization can help reduce production costs on many crops, according to the experts.

LADY NEARLY CHOKED WHILE LYING IN BED—DUE TO STOMACH GAS

One lady said a few days ago that she used to be afraid to go to bed at night. She was swollen with stomach gas, which always got worse when she went to bed, and the gas rise up in her throat after she lay down and would nearly choke her. Had to prop herself up on pillows. Recently this lady got INNER-AID and now says gas is gone, stomach feels fine, bowels are regular and she can go to bed and sleep soundly.

INNER-AID contains 12 Great Herbs; they cleanse bowels, clear gas from stomach, act on sluggish liv-

er and kidneys. Miserable people soon feel different all over. So don't go on suffering! Get INNER-AID. Sold by All Drug Stores here in Hoke County. (adv.)

Foreign production of cotton is now double what it was in 1920 and the world carry-over is at an all time high, says Secretary of Agriculture Clinton P. Anderson.

Civilians will now receive 136 million pounds of the 1945 canned salmon pack instead of the 56 million pounds previously allotted.

Only about 4.5 per cent of all American farm are dependent upon mechanical power alone.

WELCOME TOBACCO FARMERS
 MAKE OUR STORE YOUR HEADQUARTERS WHILE IN TOWN

DRY SALT FAT BACK
 lb 18c

Colonial Brand EVAP. MILK
 4 Tall cans 35c

Hurff's Brand PORK and BEANS
 16-oz Can 9c

Jim Dandy GRITS
 2-lb Pkg 13c

COLONIAL'S BEST ENRICHED FLOUR
 ... PLAIN ...
 10-lb Bag . . .61
 25-lb Bag \$1.45
 50-lb Bag \$2.85
 100-lb Bag \$5.65

PENDER

Household Needs

MAZDA LAMPS
 15 to 60 Watt 10c each
 10-watt Bulbs - 13c
 100-watt Bulbs - 18c

Palmolive Soap 7c
Lifebuoy Soap 7c
Fleecy White 15c
Argo Starch 5c

FRUIT JARS
 Pts Doz 63c Qts Doz 75c
 Half Gallons, doz \$1.00
 Jar Caps pk 23c Rubbers pk 5c
 Durkee's Pickling Spice pk 9c

Karo Blue Label Syrup 5-lb Jar 39c
Wright's Tomato Juice No. 2 Can 11c
Mother's Pure Cocoa 1-lb Can 10c
Gibb's Red Kidney Beans 16-oz Can 7c
Triangle Free Running Salt Big 24-oz Pkg 3c
Red Top Malt Dark 3-lb Can 62c
Spinach Packers Label No. 2 Can 14c
Orange Juice Florida Gold No. 2 Can 19c
Luzianne Coffee 1-lb Can 29c
Tender Leaf Tea 4-oz Pkg 24c

Red Rose BROOMS
 95c each

Independence Cream Corn No. 2 Can 12c
Geneva Brand Sliced Beets No. 2 Can 13c
Kellogg's Brand Corn Flakes 11-oz Pkg 9c
D. P. Brand Macaroni 8-oz Pkg 5c
Mott's Cider Vinegar Quart Jar 15c
Argo Grapefruit Juice No. 2 Can 12c

U. S. No. 1 SWEET POTATOES — 5 lbs. 35c
CALIF. VINE RIPENED HONEYDEWS — lb. 10c
JUICY ORANGES — 5 lbs. 47c
FANCY ELBERTA PEACHES — 2 lbs. 25c
U. S. No. 1 WHITE POTATOES — 10 lbs. 31c
CALIF. ICEBERG LETTUCE 2 heads 23c
FANCY COLORADO CARROTS 2 bchs. 17c

VOLO CATSUP Bottle 40c
PINTO BEANS 2-lb Pkg 21c
SANDWICH BREAD 1 1/2-lb Loaf 11c
COFFEE Double Fresh 24c
CORN MEAL Tarpay's 5-lb Bag 29c
Gaines Dog Meal, 5-lb Bag 16c

BIG PARADE FLOUR
 10-lb Bag 50c
 25-lb bag \$1.23 - 50-lb bag \$2.45

TRACTOR TIRE SERVICE

We have in stock all sizes of Tractor Tires and Tubes.
 We also Repair and Service any size Tractor Tire.

WALKER'S
 Safety Retreading Works

125 Russell St. Fayetteville