

Raeford Baptist Church

J. D. Whisnant, Minister

9:45 A. M.—Sunday school
11:00 A. M.—Morning worship each 2nd and 4th Sundays.
6:30 P. M.—Training Union
7:30 P. M.—Evening worship each 2nd and 4th Sundays.
7:30 P. M. Wednesday—Prayer meeting.
B. T. U. Study course, beginning Monday evening at 7:00 P. M. and extending through Friday evening.
Rev. and Mrs. Paul Deaton will teach adults and juniors respectively. Rev. Deaton is pastor of Parkton Baptist church. Mrs. Talmadge English will teach intermediates. Several of our women will take turns teaching story hour group. Make plans to attend the study course.

Spring Hill Baptist Church

Wagram

J. D. Whisnant, Pastor

10:00 A. M.—Sunday school.
11:00 A. M.—Morning worship.
6:30 P. M.—Training Union.
7:00 P. M. Wednesday—Prayer meeting before 1st and 3rd Sundays.

Peoples Tabernacle

H. Gwyn Clayton, Minister

9:45 A. M.—Sunday School
Lesson topic: "The Church As a Fellowship."
11:00 A. M.—Morning worship, sermon by the pastor.
6:00 P. M.—Young Peoples meeting.
7:00 P. M.—Evening worship sermon by pastor.
7:00 P. M. Monday—Missionary meeting.
7:00 P. M. Tuesday—Mid-week prayer meeting.

Raeford Methodist Church

W. I. Messer, Minister

New Sunday Family Sunday in the Methodist church. Each family should strive to be present and sit together as a family unit. It is also the last Sunday of the conference year. We go to Goldsboro for our annual conference November 7.

9:45 A. M.—Church School.
11:00 A. M.—Morning worship.
12:15 P. M.—Service at Parker's.
9:30 P. M.—Meeting of juniors, and Youth Fellowship.
7:30 P. M.—Evening worship.
8:30 P. M. Monday—Spiritual Life meeting of the Women's Society of Christian Service.
7:00 P. M. Wednesday—Choir rehearsal.

Tabernacle Baptist Church

Rockfish, N. C.

E. B. Booker, Pastor

10:00 A. M.—Sunday school.
11:00 A. M.—Morning worship, 1st and 3rd Sundays.
6:00 P. M.—Training Union.
7:00 P. M.—Evening worship on 2nd and 4th Sundays.
7:00 P. M. Thursday—Mid-week prayer meeting.

Ephesus Baptist Church

Raeford, N. C., RFD

E. B. Booker, Pastor

10:00 A. M.—Sunday School.
11:00 A. M.—Morning worship on 2nd and 4th Sundays.
7:00 P. M.—Worship service on 1st and 3rd Sundays.
7:00 P. M. Wednesday—Prayer service.

Bethel Presbyterian Church

W. B. Gaston, Pastor

10:00 A. M.—Sunday school.
7:00 P. M.—Evening worship, sermon by Rev. A. M. Field.

Shiloh Presbyterian Church

W. B. Gaston, Pastor

10:00 A. M.—Sunday school.
11:15 A. M.—Morning worship, sermon "He Is Not Here! He Is Risen."

Farmers Building 3-Story Corn Crops

The farmer in North Carolina, who grows a crop of corn with his regular variety and a small amount of fertilizer, is building only a one-story house, where he can build three-story house with improved practices, says Dr. Emerson Collins, in charge of Extension agronomy at State College.

"Everyone will agree that this has been an excellent corn year in 'out sections,'" Dr. Collins declares, "but the good seasons have shown us just how far we can go in producing corn and what the expense will be under the best of conditions. We can't expect gains like this every year but just the same we are convinced we can't afford to produce an average of 20 to 22 bushels of corn per acre."

He points to the record of a Halifax County farmer as an excellent example of what he means by building a three-story corn crop. The farmer produced 41 bushels per acre with his regular variety of corn and his usual fertilizer during an exceptionally good season.

When the fertilizer was stepped up to 500 pounds of high grade fertilizer per acre at planting and 400 pounds of quick acting nitrogen material as a topdresser, the yield was 78 bushels per acre. This was a two-story house.

When the house was increased by some stories by the addition of a well adapted strain of hybrid seed, the yield was 104.8 bushels per acre.

The corn in the second story, produced through extra fertilization cost about 20 cents a bushel. The corn in the third story was approximately 26 bushels and it was grown at a cost of \$1.00 for the hybrid seed, or slightly less than 4 cents a bushel. "It surely pays to grow three-story corn," Collins says.

Several thousand dollars worth of hybrid seed have been imported into Co's Blue

State College Hints To Farm Homemakers

(By Ruth Current)

Egg whites whip best when they are room temperature—that is about 70 degrees—but cream whips best when cold, according to food experts. The wise cook, therefore, takes care from the refrigerator for an hour or so before using in order to take the chill off, but she leaves cream in the coolest part of the refrigerator until the last minute before whipping.

Children are among the chief sufferers from ivy poisoning. Scientists stress particularly the need for removing all of this dangerous weed from places frequented by children.

Late fall, when the ground is soft after rain, is a good time to dig poison ivy out of hedges and shrubbery around the home and also in school grounds and parks, say plant experts. Grubbing out ivy by hand is best done when the ground is soft so that the long strings of roots pull up easily.

Any person who grubs ivy out by

hand should wear long heavy gloves or gauntlets, preferably of leather, and long sleeves. After the job is done, clothes should be taken off immediately and washed with washing soda, and the face, hands, and wrists washed thoroughly with soap and warm water. The ivy roots and stems which are pulled out should be burned or otherwise destroyed because dry ivy is almost as poisonous as fresh. When burning the plant, avoid the smoke which may cause serious poisoning. Write the U. S. Department of Agriculture, Washington 25, D. C. for Farmer's Bulletin No. 1972. It gives complete information.

State College Answers Timely Farm Questions

QUESTION: Can I use the best for killing weeds on tobacco plant beds to kill weeds on the yard?

ANSWER: Dr. Emerson Collins, in charge of Extension agronomy at State College, says that cyanamid and uramit, either singly or in combination, are used in killing weeds in tobacco plant beds which is a different matter from killing the

weed themselves. He pointed out that cyanamid is toxic to most growing plants and will kill most of the lawn grasses with the exception of Bermuda. Some of the weed killers on the market kill broad leaf plants without damaging the grasses.

QUESTION: Where can I obtain information on butchering, cutting, and curing pork?
ANSWER: Extension Circular No. 262 gives this information and it also includes series of photographs showing how to cut the carcass into hams, fat backs, loins, bacon, picnic shoulders, and the like. Just write the Agricultural Editor, State College, Raleigh, for a free copy of the circular. It also tells how to make head cheese and gives two sausage recipes.

QUESTION: How can I prevent potato tuber worms from damaging my Irish potatoes?

ANSWER: The potatoes should be kept deeply hilled during the growing season, and they should be dug and removed from the field by 5 p. m., says J. Myron Maxwell, Extension entomologist at State College. He also advises that the potatoes be kept in a tightly screened building to exclude the adult moths. If signs of infestation appear, fumigate the potatoes with carbon bisulphide at the rate of 5 pounds per 1,000 cubic feet, or methyl bromide at the rate of 2 pounds for the same area.

Dr. T. J. Wilson Dies At Chapel Hill

CHAPEL HILL, Oct. 25.—Dr. Thomas James Wilson, Jr., dean of admissions, registrar, and secretary of the faculty of the University of North Carolina, died at his home here early today after several years of declining health.

Dr. Wilson would have been 72 years old next January. He had been connected with the university faculty 46 years.

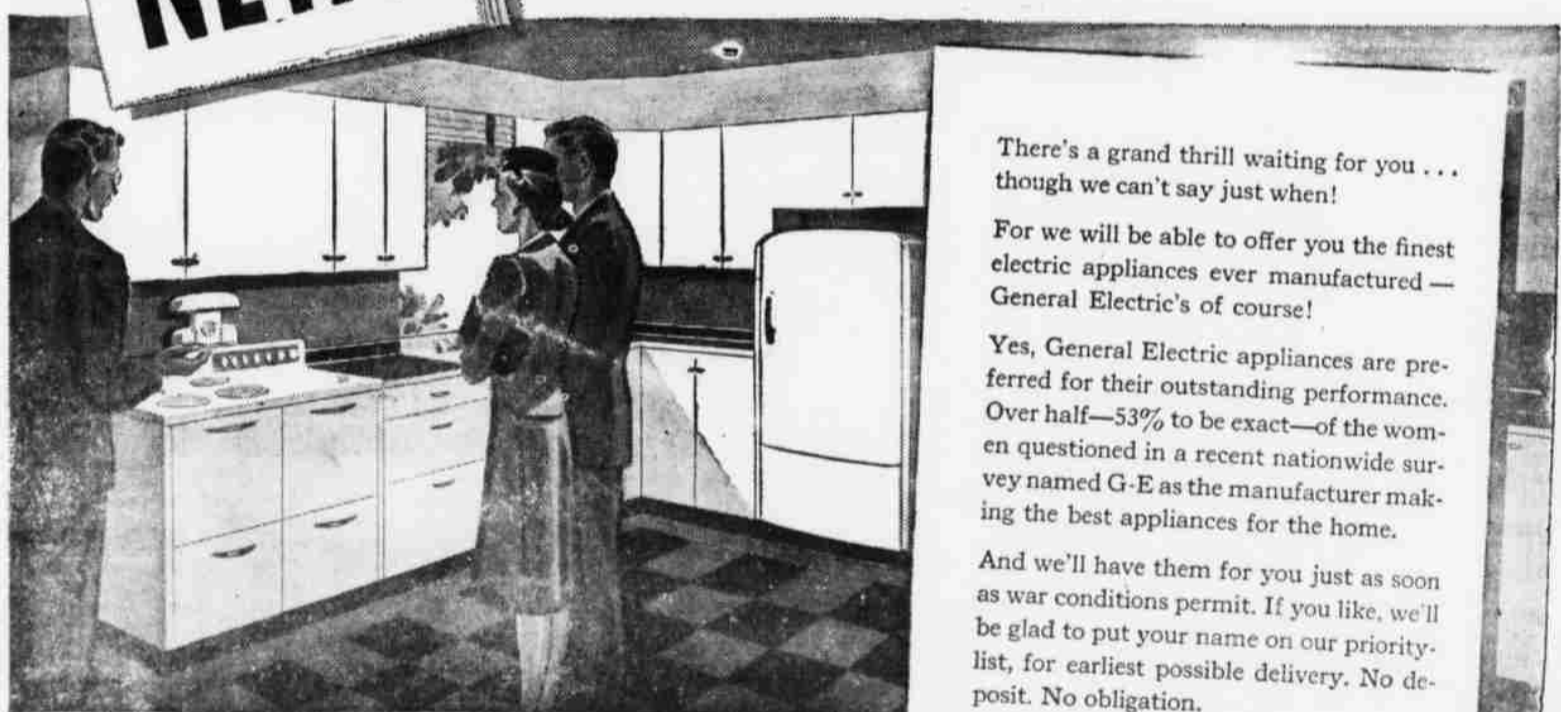
WHY PAY MORE?

Charm-Kurl SUPREME COLD WAVE HOME KIT. Each kit contains 3 full ounces of Salon-type solution with Keratin, 60 Curlers, 60 end tissues, cotton applicator, neutralizer and complete instructions. Takes only 2 to 3 Hours of Home.

Reaves Drug Store

REDDY KILOWATT comic strip. On the Button... DON'T WORRY! I'LL CLEAN THIS RUD UP IN A JIFFY. SOME DAY EVERYONE WILL DO EVEN THING ELECTRICALLY ALL THEY'VE HAVE TO DO IS PUSH A BUTTON! DAT'S WOT WUNNY'S ME. WHO'S GONNA PUSH DE BUTTON? COME ON! (FROM 6 to 60) ARE YOU READING REDDY KILOWATT? DO YOU LIKE MY COMIC STRIP? PLEASE SEND ME A CARD AND LET ME KNOW. INCLUDE YOUR NAME AND ADDRESS. YOUR PAL, Reddy Kilowatt. P.S. JUST ADDRESS IT TO ME IN CARE OF YOUR POWER CO.

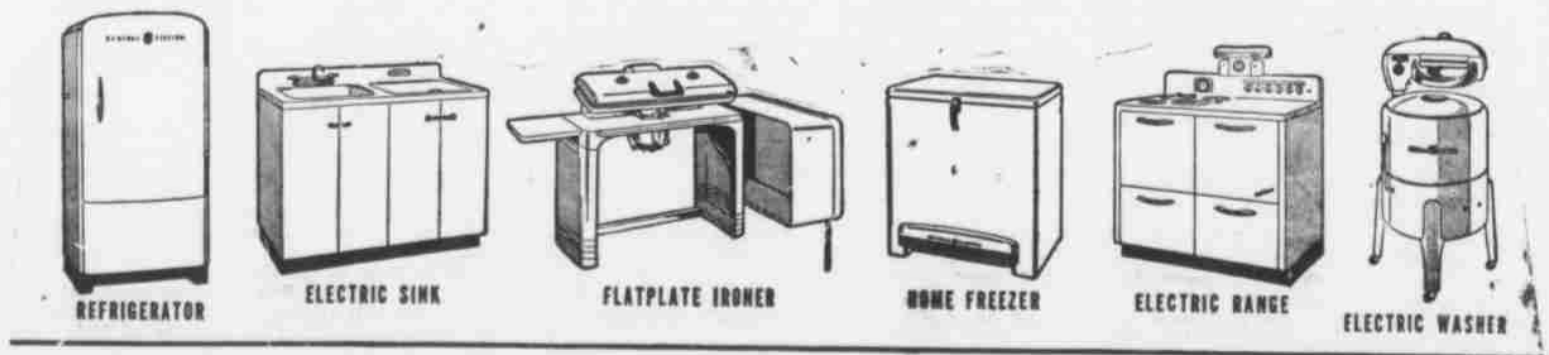
First Postwar GE Refrigerator Now On Display At Raeford Furniture Co. THE PLACE TO BUY YOUR POSTWAR General Electric Appliances!



There's a grand thrill waiting for you... though we can't say just when! For we will be able to offer you the finest electric appliances ever manufactured—General Electric's of course! Yes, General Electric appliances are preferred for their outstanding performance. Over half—53% to be exact—of the women questioned in a recent nationwide survey named G-E as the manufacturer making the best appliances for the home. And we'll have them for you just as soon as war conditions permit. If you like, we'll be glad to put your name on our priority-list, for earliest possible delivery. No deposit. No obligation.



Coming Soon! These G-E Home Appliances



NIGHT COUGHS due to colds are eased, sticky phlegm loosened up, irritated upper breathing passages are soothed and relieved, by rubbing Vicks VapoRub on throat, chest and back at bedtime. Blessed relief as VapoRub PENETRATES to upper bronchial tubes with its special medicinal vapors, STIMULATES chest and back surfaces like a warming poultice. Often by morning most of the misery of the cold is gone! Remember—ONLY VAPORUB Gives You this special double action. It's time-tested, home-proved... the best-known home remedy for relieving miseries of children's colds. VICKS VAPORUB