

EXPERIENCE IS THE BEST TEACHER!



More people are smoking

**CAMELS**  
than ever before!

BERTHA MARTIN, District

Get the Best from your Perfection  
Get the Most from the Oil it Burns  
...by keeping it in good repair!



A bent, clogged or dented Flame Spreader results in wasted, inefficient heat! Replate it with a new, genuine Perfection Flame Spreader and get back the original efficiency of the burner—maximum heat from the kerosene you burn! For best results check your Perfection Range today, carefully. Make a list of needed Perfection Replacements. We have them.

With damaged parts replaced you'll get better cooking results, more economical fuel operation. This is the way to make your Perfection stove serve you well.

Raeford Furniture Co.

**Sawmill On Wheels To Be Displayed At Farm & Home Week**

If you have never seen a sawmill on wheels that can travel over a community like a combine or thresher, then you will want to see this machine along with the many other interesting exhibits on display at State College during Farm and Home Week.

"This machine can set down in thirty minutes," says R. W. Graeber, in charge of Forestry Extension at State College, "and will cut from 6,000 to 10,000 board feet of lumber per day."

The timber harvester, as it is called, will be on display for three days, Mr. Graeber said, and a demonstration of its use will be held on Wednesday morning, August 27.

Included with the Forestry exhibits will be a tree planting machine, fire protection equipment, chain saws, bow saws, and circular saws on wheels. Each of these implements will be displayed in the college gymnasium, and demonstrations will be given on the proper use of them.

The tree planting machines are designed so that three men with the use of them can plant approximately 12,000 trees per day.

An exhibit-demonstration showing the various methods of treating fence posts has been arranged to give farmers proper procedures to follow in this money and labor saving job. This exhibit was prepared by the United States Forest Products Laboratory of Madison, Wis. and detailed explanation of the various methods will be given, and made applicable to farm conditions. As a part of this program, Mr. Graeber will discuss "Management of Farm Woods for the Production of Fence Posts and Other Products."

All of these, plus many other interesting exhibits and demonstrations pertaining to farming and homemaking go to make up the busy activities of the week of August 25-29, Farm and Home Week.

**Tobacco Growers Lose Money By Not Following The Sales**

Raleigh, August 19—Tobacco farmers in the Border Belt are losing thousands of dollars by not taking full advantage of government support prices offered on the warehouse floors by the Flue-Cured Tobacco Stabilization Corporation, it was reported by W. P. Hedrick, tobacco specialist with the State Department of Agriculture.

Hedrick said a survey of sales in the border markets showed a large amount of tobacco being sold below government floor prices.

"I saw pile after pile going from \$1 to \$5 per hundred pounds below the support price," he reported, "and in some cases farmers were letting their tobacco go from \$16 to \$15 per hundred below."

"Prices are beginning to level off at just above support figures by grade, and it is becoming increasingly important that the growers check every pile as his tobacco is being sold."

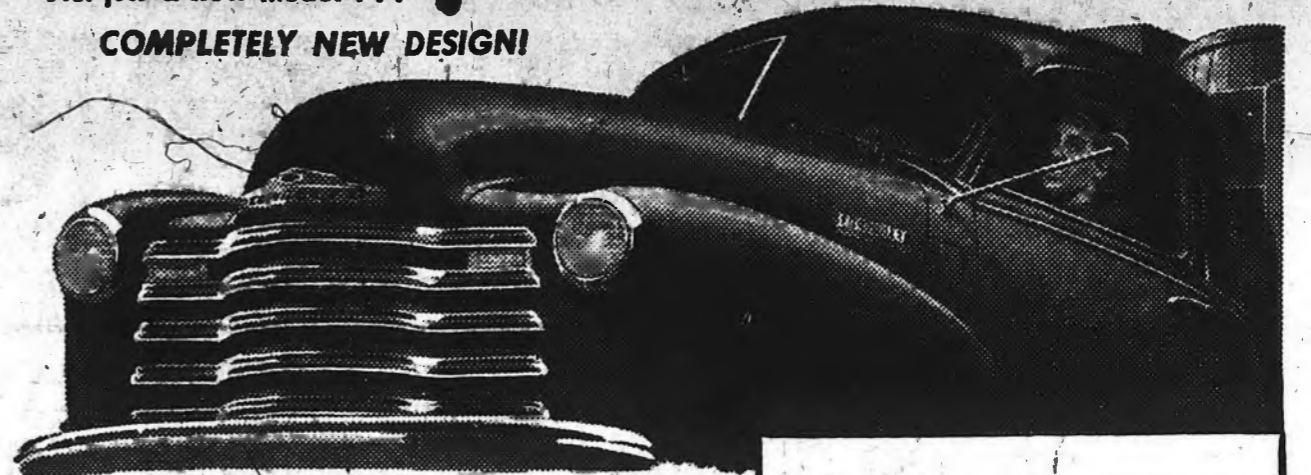
"Most of the warehouses are cooperating with growers having the personnel to assist the farmer in making support prices available. However, it is still difficult in some cases for the grower to locate the warehouse employee designated to turn tobacco over to the Stabilization Corporation."

Hedrick says farmers should follow the sale of their tobacco, acquaint themselves with support prices and, when a buyer bids below the support prices, call a warehouseman and have the sale nullified and the tobacco switched to the Stabilization Corporation.

It is the farmer's responsibility to check bid prices against support prices and get the highest figure for his tobacco, Hedrick said.

A boll weevil will lay on the average of 6.4 eggs per day. The maximum number that one will lay is 33.

Not just a new model... COMPLETELY NEW DESIGN!



Only Advance-Design  
Chevrolet trucks offer all these  
**NEW TRUCK FEATURES**

Come in and see...

THE CAB THAT "BREATHES"—fresh air is drawn in from the outside—heated in cold weather—and used air is forced out!



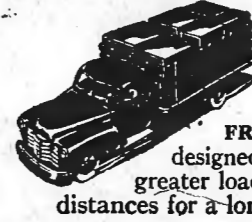
The new FLEXI-MOUNTED CAB is cushioned on rubber against road shocks, torsion and vibration!



DRIVER'S COMPARTMENT is wider, with more leg room—the seats are fully adjustable, bigger and more comfortable. Wider, deeper WINDSHIELD and WINDOWS increase visibility by 22%. Rear corner windows, permitting even greater visibility, available as optional equipment at extra cost.



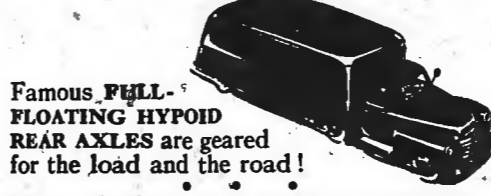
Advance Design in pick-ups and panels gives INCREASED LOAD SPACE—stake and high rack bodies have MORE EFFICIENT LOADING!



New, stronger FRAMES are designed to carry greater loads greater distances for a longer time!



LONGER WHEELBASES assure better load distribution!



Famous FULL-FLOATING HYPOID REAR AXLES are geared for the load and the road!

Chevrolet's VALVE-IN-HEAD TRUCK ENGINES are world's most economical for their size. The HYDRAULIC TRUCK BRAKES are exclusively designed for greater brake-lining contact!

**CHEVROLET TRUCKS** with the Cab that "Breathes"

HOKE AUTO COMPANY

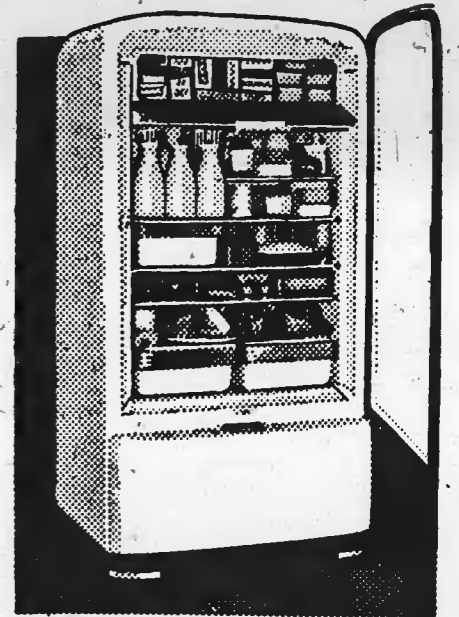
Phone 2301

Raeford, N. C.

STAYS SILENT, LASTS LONGER



Great New  
**1947 SERVEL**  
GAS Refrigerator



The silent Servel Gas Refrigerator—now brings you the newest and finest in refrigeration convenience... A big Frozen Food Locker! Moist cold, dry cold for fresh meats and vegetables! AND Servel's famous different freezing system that hasn't a single moving part to wear or get noisy. More than 2,000,000 owners know the Gas Refrigerator stays silent, lasts longer.



Announcing...

JOHNSON'S

**FAST FLAME BOTTLED GAS**

IN CYLINDERS

Available For Immediate Hook-Up

**GAS**

**RANGES - - REFRIGERATORS  
WATER & SPACE HEATERS**  
- AVAILABLE IN LIMITED QUANTITIES -

WE DO NOT LIMIT GAS INSTALLATIONS TO OUR APPLIANCE SALES ONLY. SEE US AT  
ONCE FOR COMPLETE DETAILS AND DEMONSTRATION.

Johnson Cotton Company

"Cash if you have it - Credit if you need it"

L. W. TURNER, Mgr.

Raeford, North Carolina