

ATTEND SERVICES AT YOUR CHURCH

Antioch Presbyterian Church

J. W. Mann, Pastor.
10:00 A. M.—Sunday school.
11:00 A. M. Morning Worship

Raeford Methodist Church

W. L. Maness, Minister
9:45 A. M.—Church school and awarding of promotion certificates.
11:00 A. M., Morning worship, Rally Day and Communion Services.
12:15 P. M., Worship service at Parker's
6:30 P. M. Meeting of the MYF. Mrs. C. E. Upchurch, Jr. adult counselor, Mrs. W. T. Gibson, Jr., assistant counselor.
7:30 P. M., Evening worship
3:30 P. M. Monday, Spiritual Life Meeting of the WSCS.
7:30 P. M. Monday, meeting of Circle No. 3, Mrs. A. R. Morris Chairman, with Mrs. R. L. Carter.
7:30 P. M. Wednesday, Choir rehearsal.

Bethel Presbyterian Church

10:00 A. M.—Sunday school.
Ryan McBryde, Supt.

Tabernacle Baptist Church

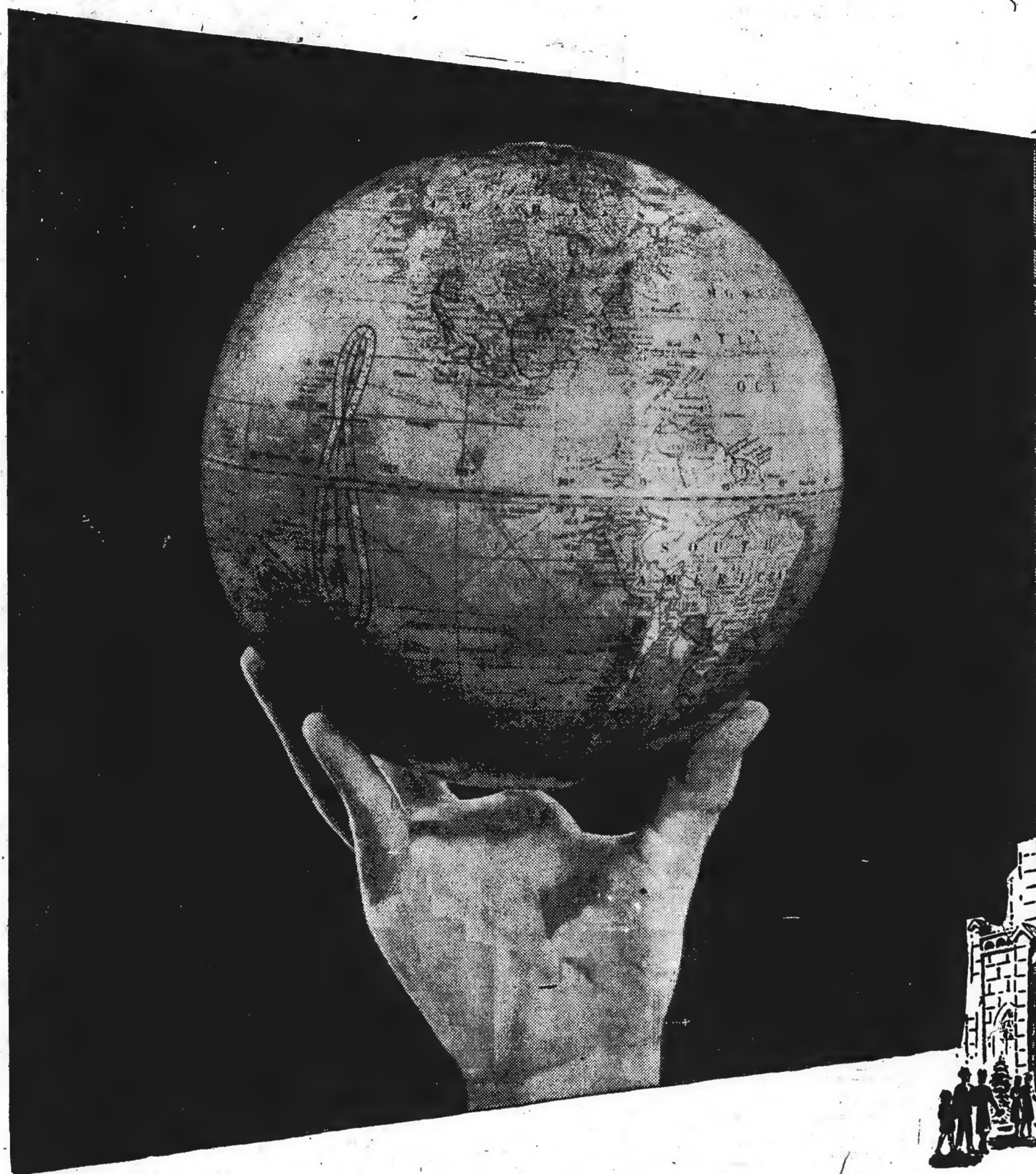
E. B. Booker, Pastor.
10:00 A. M.—Sunday school.
11:00 A. M.—Morning worship, 1st and 3rd Sundays.
6:00 P. M.—Training union.
7:00 P. M.—Evening Worship, 2nd and 4th Sundays.
7:00 P. M. Thursday—Prayer service.

Pittman Grove Baptist Church

Rev. Taylor, Pastor.
10:00 A. M.—Sunday school.
11:00 A. M.—Worship service each 1st and 3rd Sunday.
7:00 P. M. Thursday—Prayer meeting.

Dundarrach Presbyterian Church

Rev. J. W. Mann, Pastor
2:30 P. M.—Sunday school.
3:15 P. M.—Preaching every 2nd and 4th Sunday.



IT'S A SMALL WORLD

Ever run into a friend in Tokyo, or meet one of your neighbors in Amsterdam? Maybe not—but such things are happening every day!

It makes you stop and think—the way this world is shrinking. It makes you wish that the men and women who live on opposite sides of the globe had more things in common.

There can be no more unifying force in the world than a common belief in God. And toward that ideal we are rapidly progressing. Christians the world over are feeling and expressing their unity of faith and purpose.

Next Sunday is World-Wide Communion Sunday. On that day, within the space of a few short hours, Christians in every land will reverently participate in the Lord's Supper which has been a mark of Christian faith for almost two thousand years.

Worship with the World in the Church of your choice!

THE CHURCH FOR ALL... ALL FOR THE CHURCH

The Church is the greatest factor on earth for the building of character and good citizenship. It is a storehouse of spiritual values. Without a strong Church, neither democracy nor civilization can survive. There are four sound reasons why every person should attend and support the church of his choice. They are: (1) For his own sake. (2) For his children's sake. (3) for the sake of his community and nation. (4) For the sake of the Church itself, which needs his moral and material support. Plan to go to church on Sunday and read your Bible daily.

Copyright 1947 by E. E. Kiefer, Staunton, Virginia

Raeford Presbyterian Church

W. B. Heyward, Pastor
9:45 A. M.—Church School.
11:00 A. M.—Morning Worship
World Wide Communion Service.
6:30 P. M. Young People Groups
7:30 P. M. Union worship at Methodist Church.
7:45 P. M. Wednesday night Prayer Service.

Community Chapel (Five Points)

W. L. Maness, Minister
Preaching services each second and fourth Sundays at 3:00 o'clock. Prayer services, by Mrs. Wallace Ellis, each first and third Sundays, at three o'clock.

Shiloh Presbyterian Church

10:00 A. M. Sunday school.

Spring Hill Baptist Church

J. D. Whisnant, Pastor
10:00 A. M.—Sunday School.
11:00 A. M. Morning Worship
7:00 P. M. Training Union.
8:00 P. M. Wednesday. Prayer
Rev. E. S. Johnson will fill the pulpit in the absence of the pastor.
Meeting.

Philippi Presbyterian Church

3:30 P. M. Sunday School
4:15 P. M. Worship Service by Rev. W. B. Heyward

Parker Methodist Church

W. L. Maness, Pastor
11:00 A. M.—Sunday school.
12:15 P. M.—Regular worship services each first and third Sundays.

Raeford Baptist Church

J. D. Whisnant, Pastor
9:45 A. M.—Sunday school.
6:30 P. M. Training Union.
7:30 P. M. Wednesday Prayer Meeting.

This Page Is Sponsored By The Following Business Firms Of Hoke County

Hotel Barber Shop	Hoke Auto Co.	Israel Mann	The Bank of Raeford
Amos Furniture Co.	Hoke Concrete Works	The Johnson Co.	Johnson Cotton Co. OF RAEFORD, INC.
Belk-Hensdale Co.	Hoke Oil & Fertilizer Co	Raeford Auto Co.	T. B. Upchurch, Inc.
Collins Department Store	Dundarrach Trading Co., Inc.	James C. Lentz Mortuary	Raeford Furniture Co.
Grahams Service Station	Raeford Hotel	Hoke Mutual Burial ASSOCIATION INC.	McLaughlin Co.