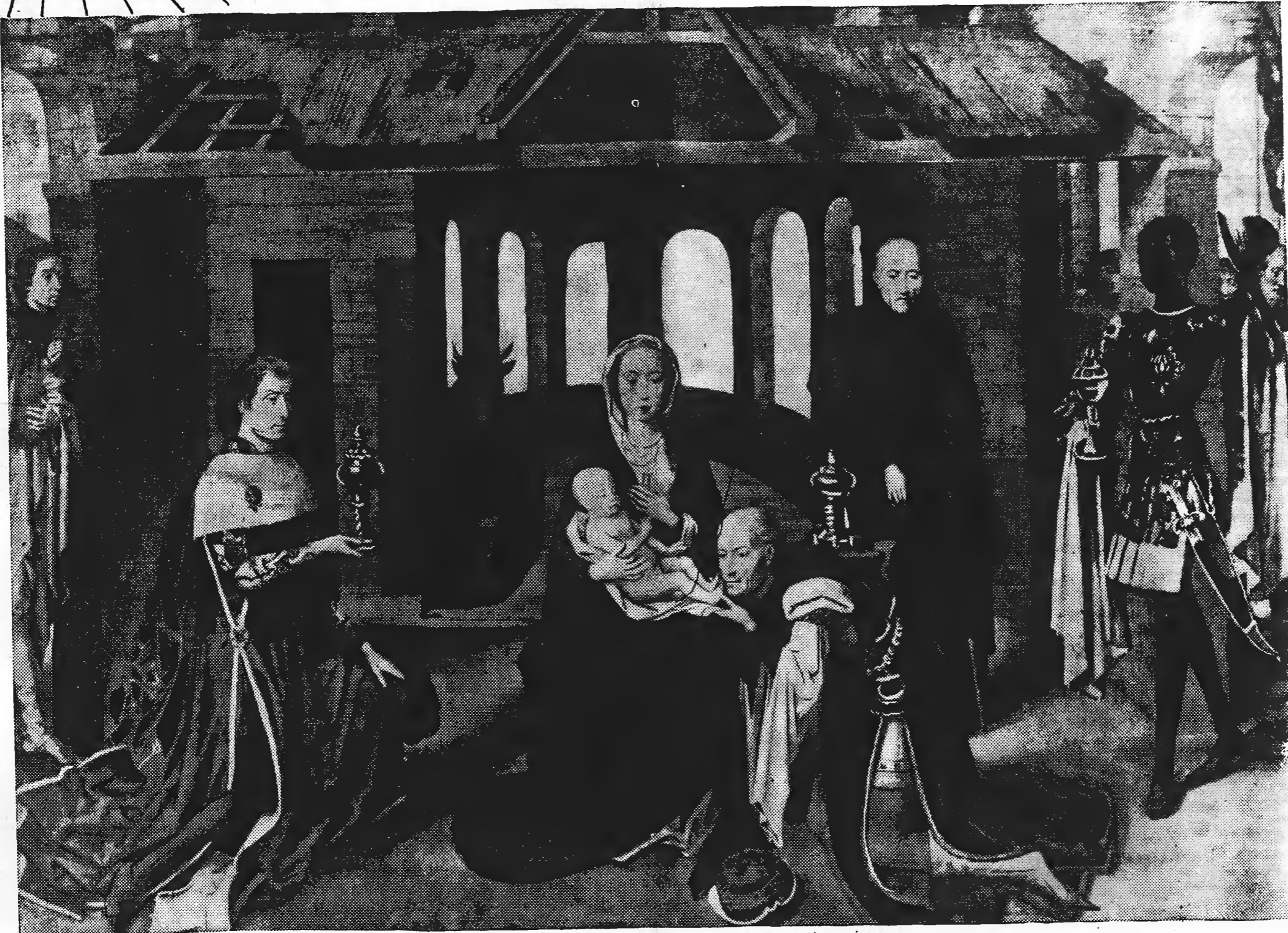


Wise Men Came to Bethlehem



Raeform Baptist Church
 9:45 A. M.—Sunday school.
 6:30 P. M.—Training Union
 8:00 P. M.—Wednesday, Prayer Services.

Community Chapel Methodist Church
 Rev. G. W. Crutchfield, Minister
 Sunday School each Sunday afternoon at 2:00 o'clock, Mrs. H. W. Ellis, Superintendent.
 Preaching services each second and fourth Sunday afternoons at 3:00 o'clock.
 8:00 P. M.—Wednesday, Song and prayer service

Sandy Grove Methodist Church
 Rev. W. O. Cotton, Minister
 10:00 A. M.—Sunday School
 Each third Sunday preaching at 11:00 A. M.
 Each fourth Sunday night at 7:30

Tabernacle Baptist Church
 E. B. Booker, Pastor
 10:00 A. M.—Sunday school,
 11:00 A. M.—Morning worship, 2nd and 4th Sundays.
 6:00 P. M.—Training union,
 7:00 P. M.—Evening Worship, 1st and 3rd Sundays.
 7:00 P. M. Thursday—Prayer service.

Antioch Presbyterian Church
 J. W. Mann, Pastor.
 10:00 A. M.—Sunday school.
 11:00 A. M. Morning Worship

Shiloh Presbyterian Church
 S. A. Ewart, Pastor
 10:00 A. M.—Sunday School
 11:00 A. M.—Morning Worship, every first and third Sunday.

Ashley Heights Baptist Church
 10:00 A. M. Sunday School
 6:00 P. M. Training Union
 7:30 P. M. Wednesday, Prayer Meeting.

Pittman Grove Baptist Church
 Rev. Taylor, Pastor.
 10:00 A. M.—Sunday school,
 11:00 A. M.—Worship service each 1st and 3rd Sunday.
 7:00 P. M. Thursday—Prayer meeting.

These are the wise men who came to Bethlehem to worship the infant Savior.

They came from far-off Persia, where they worshipped the principle of light as manifested in the sun, moon, and stars. Led by a gleaming star which shone above the Khan at Bethlehem, they brought gifts of gold and frankincense and myrrh.

The Magi were representatives of an ancient faith—a faith which went back to the days when man first looked up at the stars and wondered and worshipped. In this adoration, the lights of an old world faded in the brightness of a new revelation.

Men no longer have to look to the stars for the light of faith. It has come down to earth and shines in human hearts. It brightens man's pathway and gives his life a meaning and a purpose. This is the significance of the wise men's journey to Bethlehem.

Wisdom, in all ages, has taught men to seek the light of life in God. We need that light now to dispel the shadows of these dark and dangerous days.

THE CHURCH FOR ALL ... ALL FOR THE CHURCH

The Church is the greatest factor on earth for the building of character and good citizenship. It is a storehouse of spiritual values. Without a strong Church, neither democracy nor civilization can survive. There are four sound reasons why every person should attend services regularly and support the Church. They are: (1) For his own sake (2) For his children's sake. (3) For the sake of his community and nation. (4) For the sake of the Church itself, which needs his moral and material support. Plan to go to church regularly and read your Bible daily.

Sunday Matthew 2:1-12
 Monday Romans 8:18-25
 Tuesday John 1:1-14
 Wednesday Isaiah 53:1-9
 Thursday Isaiah 40:1-11
 Friday Isaiah 9:1-7
 Saturday Matthew 13:44-52

If you desire a schedule of readings for the year write to American Bible Society, Dept. U, 450 Park Ave., N. Y. 22, N. Y.

Copyright 1948, E. E. Keister, Strasburg, Va.

Raeform Presbyterian Church
 W. B. Heyward, Pastor
Sunday
 9:45 A. M.—Church School
 11:00 A. M.—Morning Worship
 6:30 P. M.—Pioneer Vespers
 6:30 P. M.—Youth Fellowship Vespers.
 7:30 P. M.—Evening Worship
Wednesday
 7:30 P. M.—Senior Choir Practice.
Saturday
 11:00 A. M.—Junior Choir Rehearsal

Galatia Presbyterian Church
 B. O. Shannon, Pastor
 10:00 A. M.—Church School.
 11:00 A. M.—Morning Worship
 Every Sunday except the 5th Sunday.
 7:30 P. M.—Wednesday, Choir Practice.

Ephesus Baptist Church
 10:00 A. M.—Sunday school

Bethel Presbyterian Church
 10:00 A. M.—Sunday School
 11:00 A. M.—Every second and fourth Sunday, Morning Worship services with sermon by the Rev. S. A. Ewart.

Raeform Methodist Church
 Rev. P. O. Lee, Minister
 9:45 A. M.—Church school.
 11:00 A. M.—Morning Worship.
 Students Recognition Day. The Young People of the Church will have complete charge of the Morning Worship in the absence of the pastor.
 6:30 P. M., Meeting of the MYF.
 7:30 P. M. Wednesday Choir Practice.

Parker Methodist Church
 Rev. P. O. Lee, Minister
 11:00 A. M.—Sunday school.
 12:00 A. M.—Morning Worship 1st and 3rd Sundays.

Philippi Presbyterian Church
 2nd and 4th Sundays
 11:15 A. M.—Sunday school
 12:15 P. M.—Worship Service

Lumber Bridge Presbyterian Church
 10:00 A. M., Sunday School

Dundarrach Presbyterian Church
 Rev. J. W. Mann, Pastor
 2:30 P. M.—Sunday school.
 3:15 P. M.—Preaching every 2nd and 4th Sunday.

This Page Is Sponsored By The Following Business Firms Of Hoke County

Amos Furniture Co.	Hoke Auto Co.	Israel Mann	Johnson Cotton Co. OF RAEFORM, INC.
Belk-Hensdale Co.	Hoke Concrete Works	The Johnson Co.	T. B. Upchurch, Inc.
Collins Department Store	Hoke Oil & Fertilizer Co	Raeform Auto Co.	Raeform Furniture Co.
Grahams Service Station	Dundarrach Trading Co., Inc.	James C. Lentz Mortuary	McLaughlin Co.